

PRODUCT INFORMATION PACKET

Model No: 284THFNA9076

Catalog No: W548

XRI®-841 Severe Duty Motor, 15 HP, 3 Ph, 60 Hz, 460 V, 1200 RPM, 284T Frame, TEFC



Regal and Marathon are trademarks of Regal Rexnord Corporation or one of its affiliated companies.

©2022 Regal Rexnord Corporation, All Rights Reserved. MC017097E

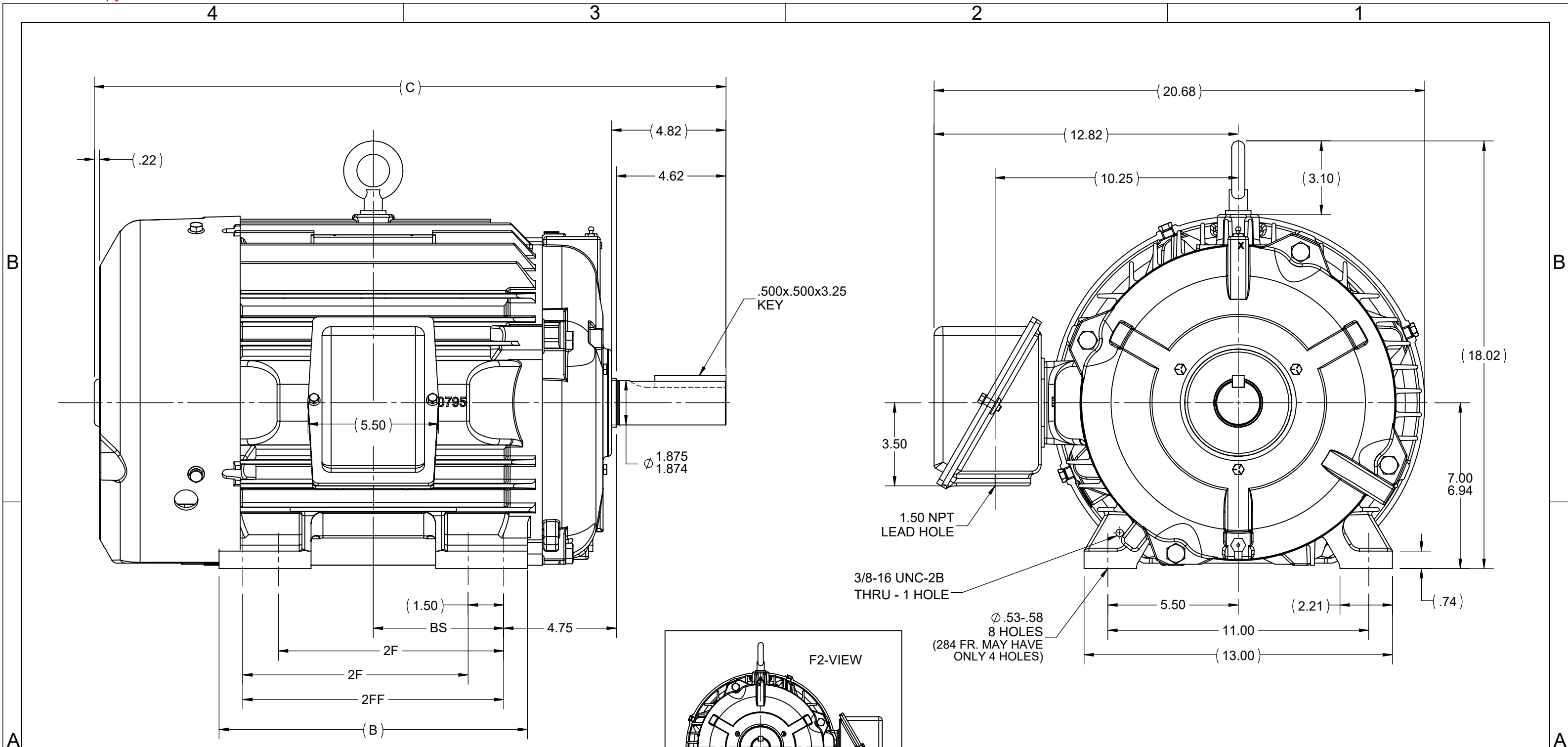
Nameplate Specifications

| | | | |
|------------------------|-----------------------|----------------------------|------------------------------------|
| Output HP | 15 Hp | Output KW | 11.2 kW |
| Frequency | 60 Hz | Voltage | 460 V |
| Current | 20.4 A | Speed | 1178 rpm |
| Service Factor | 1.15 | Phase | 3 |
| Efficiency | 91.7 % | Power Factor | 75 |
| Duty | Continuous | Insulation Class | F |
| Design Code | B | KVA Code | G |
| Frame | 284T | Enclosure | Totally Enclosed Fan Cooled |
| Thermal Protection | No Protection | Ambient Temperature | 40 °C |
| Drive End Bearing Size | 6311 | Opp Drive End Bearing Size | 6210 |
| UL | Recognized | CSA | Y |
| CE | Y | IP Code | 56 |
| Hazardous Location | DIVISION 2 T2B | Number of Speeds | 1 |

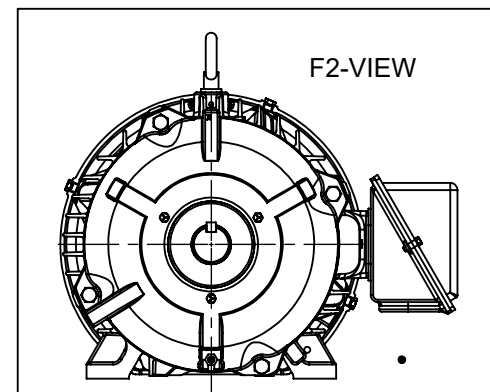
Technical Specifications

| | | | |
|-----------------------|-------------------------------------|-----------------------|-------------------------|
| Electrical Type | Squirrel Cage Inverter Rated | Starting Method | Line Or Inverter |
| Poles | 6 | Rotation | Reversible |
| Resistance Main | .5026 Ohms | Mounting | Rigid Base |
| Motor Orientation | Horizontal | Drive End Bearing | Ball |
| Opp Drive End Bearing | Ball | Frame Material | Cast Iron |
| Shaft Type | T | Overall Length | 26.21 in |
| Frame Length | 12.75 in | Shaft Diameter | 1.875 in |
| Shaft Extension | 4.62 in | Assembly/Box Mounting | F1/F2 CAPABLE |
| Inverter Load | CONSTANT 10:1 | | |
| Connection Drawing | A-EE7300 | Outline Drawing | B-SS311057-1275 |

This is an uncontrolled document once printed or downloaded and is subject to change without notice. Date Created:11/29/2022



- NOTES:
1. CONDUIT BOX CAN BE ROTATED IN 90° STEPS.
 2. CONDUIT BOX CAN BE MOUNTED ON OPPOSITE SIDE BY REMOVING BRACKETS AND TURNING FRAME 180°.
 3. NAMEPLATES TO BE READ FROM CONDUIT BOX SIDE OF MOTOR.



| DASH | FRAME | C | B | 2F | 2FF | BS |
|------|----------|-------|-------|------|-------|------|
| 1275 | 284T | 26.63 | 12.50 | 9.50 | --- | 4.75 |
| 1425 | 284/286T | 28.13 | 13.00 | 9.50 | 11.00 | 5.50 |

| | | |
|---|-------------------|-----------------------------------|
| DRAWING REVISION E | REVISION BY VS | REV DATE/© DATE 14th-June-2022 |
| REQUEST NUMBER NMR-0214673 | APPROVED BY VS | DATE 14th-June-2022 |
| REQUEST NUMBER DESCRIPTION RIB PLUG ADDED | | |
| <small>COPYRIGHT (PER REVISION DATE) REGAL BELOIT AMERICA, INC. ALL RIGHTS RESERVED. PROPRIETARY AND CONFIDENTIAL INFORMATION - THIS DOCUMENT IS THE PROPERTY OF REGAL BELOIT AMERICA, INC. ("OWNER") AND CONTAINS OWNER'S PROPRIETARY INFORMATION. ANY PERSON, CORPORATION OR OTHER FIRM RECEIVING IT IS DEEMED, BY RECEIVING IT, TO AGREE THAT IT, AND/OR ANY PART OF IT, SHALL NOT BE DISCLOSED TO ANY PERSON, CORPORATION OR OTHER ENTITY, DUPLICATED, AND/OR USED, EXCEPT AS EXPRESSLY APPROVED IN WRITING IN ADVANCE BY OWNER. THIS DOCUMENT SHALL BE RETURNED TO OWNER UPON REQUEST. IT MAY BE SUBJECT TO CERTAIN RESTRICTIONS UNDER APPLICABLE EXPORT CONTROL LAWS AND REGULATIONS.</small> | | |

TOLERANCES (EXCEPT AS NOTED):

| DEC. | INCH | mm | ANGLE |
|-------|---------|----------|---------|
| .X | ±0.1 | [±3] | ±7° 30" |
| .XX | ±0.03 | [±0.8] | |
| .XXX | ±0.005 | [±0.13] | |
| .XXXX | ±0.0005 | [±0.013] | |

REMOVE BURRS & BREAK SHARP EDGES: .003/.015 [.08/.38] X 45°
 CORNER FILLETS: R.02 [.5]
 MACHINED SURFACES: 200/5.1 INCH/mm
 mm DIMENSIONS IN [BRACKETS] ARE FOR REFERENCE ONLY

| |
|------------------------|
| DRAWN BY CAV |
| DATE 10-18-2000 |
| APPROVED BY BW |
| DATE 10-18-2000 |
| REFERENCE |
| THIRD ANGLE PROJECTION |

Regal Rexnord Regal Beloit America, Inc.

DESCRIPTION
OUTLINE
280T FR. - BB - STD 12.50 LAM

MATERIAL PROCESS/FINISH

SIZE **B** DRAWING NUMBER **SS311057** SHEET 1 OF 1

THREE PHASE - SINGLE VOLTAGE
MOTOR - CONDUIT BOX @ 'A'

TERMINAL BLOCK WHEN SPECIFIED

TO REVERSE ROTATION:
INTERCHANGE ANY TWO LINE
LEAD CONNECTIONS



VIEW OF TERMINAL END

OPTIONAL CORD CONNECTION

| | |
|----|-------|
| L1 | WHITE |
| L2 | RED |
| L3 | BLACK |

| | | |
|---|-------------------|-------------------------------|
| DRAWING REVISION AC | REVISION BY BS | REV DATE/© DATE 26/07/2022 |
| REQUEST NUMBER CR-0010402 | APPROVED BY SN | DATE 26/07/2022 |
| REQUEST NUMBER DESCRIPTION DRAWING UPDATED | | |
| <small>COPYRIGHT (PER REVISION DATE) REGAL BELOIT AMERICA, INC. ALL RIGHTS RESERVED. PROPRIETARY AND CONFIDENTIAL INFORMATION - THIS DOCUMENT IS THE PROPERTY OF REGAL BELOIT AMERICA, INC. ("OWNER") AND CONTAINS OWNER'S PROPRIETARY INFORMATION. ANY PERSON, CORPORATION OR OTHER FIRM RECEIVING IT IS DEEMED, BY RECEIVING IT, TO AGREE THAT IT, AND/OR ANY PART OF IT, SHALL NOT BE DISCLOSED TO ANY PERSON, CORPORATION OR OTHER ENTITY, DUPLICATED, AND/OR USED, EXCEPT AS EXPRESSLY APPROVED IN WRITING IN ADVANCE BY OWNER. THIS DOCUMENT SHALL BE RETURNED TO OWNER UPON REQUEST. IT MAY BE SUBJECT TO CERTAIN RESTRICTIONS UNDER APPLICABLE EXPORT CONTROL LAWS AND REGULATIONS.</small> | | |

PRIMARY DIMENSIONS ARE INCH
mm DIMENSIONS IN [BRACKETS]
ARE FOR REFERENCE ONLY

| |
|------------------------|
| DRAWN BY DA |
| DATE 03-26-1993 |
| APPROVED BY TB |
| DATE 03-26-1993 |
| REFERENCE |
| THIRD ANGLE PROJECTION |

| | | | |
|--|---------------------------------|----------------------------|-----------------|
| | | Regal Beloit America, Inc. | |
| DESCRIPTION CONNECTION DIAGRAM EXTERNAL - SINGLE VOLTAGE - 3Ø MOTOR | | | |
| MATERIAL | | PROCESS/FINISH | |
| SIZE A | DRAWING NUMBER EE7300 | | SHEET 1 OF 1 |



**P.O. BOX 8003
WAUSAU, WI 54401-8003
PH. 715-675-3311**

CERTIFICATION DATA SHEET

CUSTOMER:
ORDER #:
CONN. DIAGRAM: A-EE7300
OUTLINE: B-SS311057-1275
WINDING #: 284658 7

CUSTOMER PO#:
MODEL #: 284THFNA9076 AA
CUSTOMER PART #:
MOUNTING: F1/F2 CAPABLE

TYPICAL MOTOR PERFORMANCE DATA

| HP | kW | SYNC. RPM | F.L. RPM | FRAME | ENCLOSURE | KVA CODE | DESIGN |
|----|------|-----------|----------|-------|-----------|----------|--------|
| 15 | 11.2 | 1200 | 1178 | 284T | TEFC | G | B |

| PH | Hz | VOLTS | AMPS | START TYPE | DUTY | INSL | S.F. | AMB°C |
|----|----|-------|------|------------------|------------|------|------|-------|
| 3 | 60 | 460 | 20.4 | LINE OR INVERTER | CONTINUOUS | F3 | 1.15 | 40 |

| FULL LOAD EFF: | 91.7 | 3/4 LOAD EFF: | 91.7 | 1/2 LOAD EFF: | 91 | GTD. EFF | | ELEC. TYPE | |
|----------------|------|---------------|------|---------------|------|----------|--|-------------------|--|
| FULL LOAD PF: | 75 | 3/4 LOAD PF: | 69 | 1/2 LOAD PF: | 57.5 | 91 | | SQ CAGE INV RATED | |

| F.L. TORQUE | LOCKED ROTOR AMPS | L.R. TORQUE | B.D. TORQUE | F.L. RISE°C |
|-------------|-------------------|-----------------|-----------------|-------------|
| 66.9 LB-FT | 116 | 120 LB-FT 179 % | 205 LB-FT 306 % | 55 |

| SOUND PRESSURE @ 3 FT. | SOUND POWER | ROTOR WK^2 | MAX. WK^2 | SAFE STALL TIME | STARTS / HOUR | APPROX. MOTOR WGT |
|------------------------|-------------|-------------|-------------|-----------------|---------------|-------------------|
| 56 dBA | 66 dBA | 4.1 LB-FT^2 | 280 LB-FT^2 | 20 SEC. | 2 | 460 LBS. |

***** SUPPLEMENTAL INFORMATION *****

| DE BRACKET TYPE | ODE BRACKET TYPE | MOUNT TYPE | ORIENTATION | SEVERE DUTY | HAZARDOUS LOCATION | DRIP COVER | SCREENS | PAINT |
|-----------------|------------------|------------|-------------|---------------------|--------------------|------------|---------|--------------|
| STANDARD | STANDARD | RIGID | HORIZONTAL | PREMIUM SEVERE DUTY | DIVISION 2 T2B | FALSE | NONE | BLUE (EPOXY) |

| BEARINGS | | GREASE | SHAFT TYPE | SPECIAL DE | SPECIAL ODE | SHAFT MATERIAL | FRAME MATERIAL |
|----------|------|------------|------------|------------|-------------|-------------------------|----------------|
| DE | ODE | | | | | | |
| BALL | BALL | POLYREX EM | T | NONE | NONE | 1045 HOT ROLLED (C-204) | CAST IRON |
| 6311 | 6210 | | | | | | |

| THERMO-PROTECTORS | | | | THERMISTORS | CONTROL | SPACE HEATERS |
|-------------------|------------|----------|----------|-------------|---------|---------------|
| THERMOSTATS | PROTECTORS | WDG RTDs | BRG RTDs | | | |
| NONE | NOT | NONE | NONE | NONE | FALSE | NONE VOLTS |

*
N
O
T
E
S
*

| |
|--|
| INVERTER TORQUE: CONSTANT 10:1 |
| INV. HP SPEED RANGE: NONE |
| ENCODER: NONE NONE NONE NONE NONE PPR |
| BRAKE: NONE NONE NONE P/N NONE NONE NONE NONE FT-LB NONE V NONE Hz |

PREPARED BY: Dinesh
Suddula **DATE:**
02/14/2019 04:13:10 AM
FORM 3531 REV.3 02/07/99
** Subject to change without
notice.

Data Sheet

Date: 6/20/2017

284THFNA9076

Customer: _____



Attention: _____

Submittal

Submitted by: FAREEDA DUDEKULA

Data @ 460 V

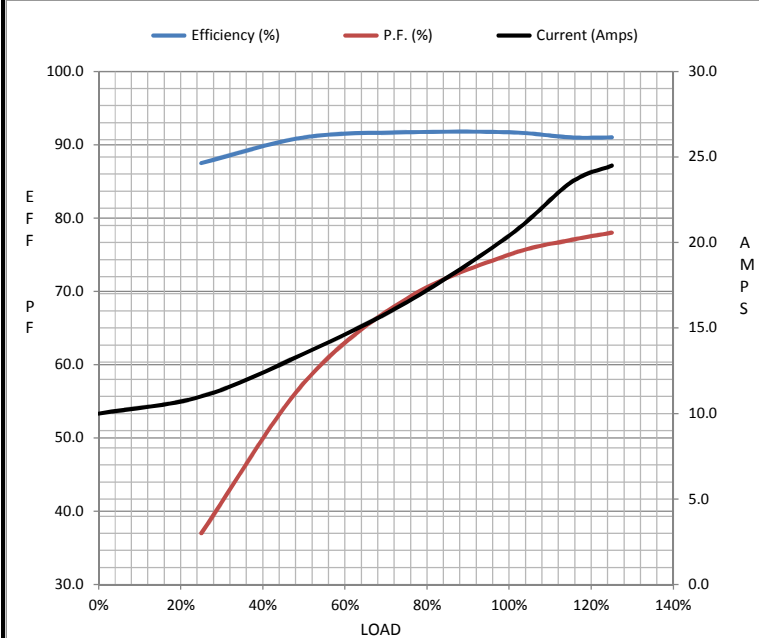
Motor Load Data

| Load | 0% | 25% | 50% | 75% | 100% | 115% | 125% | LR | |
|----------------|------|------|------|------|------|-------|------|------|--|
| Current (Amps) | 10.0 | 11.0 | 13.5 | 16.5 | 20.4 | 23.5 | 24.5 | 116 | |
| Torque (ft-lb) | 0.00 | 16.5 | 33.0 | 50.0 | 66.9 | 77.0 | 84.0 | 120 | |
| RPM | 1200 | 1194 | 1190 | 1184 | 1178 | 1,174 | 1172 | 0 | |
| Efficiency (%) | | 87.5 | 91.0 | 91.7 | 91.7 | 91.0 | 91.0 | | |
| P.F. (%) | 5.1 | 37.0 | 57.5 | 69.0 | 75.0 | 77.0 | 78.0 | 35.5 | |

Motor Speed Data

| | LR | Pull-Up | BD | Rated | Idle |
|----------------|-----|---------|------|-------|------|
| Speed (RPM) | 0 | 700 | 1085 | 1178 | 1200 |
| Current (Amps) | 116 | 110 | 75.0 | 20.4 | 10.0 |
| Torque (ft-lb) | 120 | 115 | 205 | 66.9 | 0.00 |

| Information Block | | | | |
|-----------------------------|------------------------|--------|--------|---------|
| HP | 15.0 | | | |
| Sync. RPM | 1200 | | | |
| Frame | 284 | | | |
| Enclosure | TEFC | | | |
| Construction | TFN | | | |
| Voltage | 460 V | | | |
| Frequency | 60 Hz | | | |
| Design | B | | | |
| LR Code letter | G | | | |
| Service Factor | 1.15 | | | |
| Temp Rise @ FL | 55 °C | | | |
| Duty | CONT | | | |
| Ambient | 40 °C | | | |
| Elevation | 1,000 feet | | | |
| Rotor/Shaft wk ² | 4.1 Lb-Ft ² | | | |
| Ref Wdg | 284658 NONE | | | |
| Sound Pressure @ 1M | 56 dBA | | | |
| VFD Rating | CONSTANT 10:1 | | | |
| Outline Dwg | B-SS311057-1275 | | | |
| Conn. Diag | A-EE7300 | | | |
| Additional Specifications: | | | | |
| 0 | | | | |
| 0 | | | | |
| EQUIV CKT (OHMS / PHASE) | | | | |
| R1 | R2 | X1 | X2 | Xm |
| 0.3580 | 0.3580 | 1.8640 | 2.0430 | 28.8150 |



Speed -Torque Curve

