

PRODUCT INFORMATION PACKET



Model No: 284THFNA18101
Catalog No: 284THFNA18101
10,900,TEFC,284T,3/60/480

Regal and Marathon are trademarks of Regal Rexnord Corporation or one of its affiliated companies.
©2024 Regal Rexnord Corporation, All Rights Reserved. MC017097E



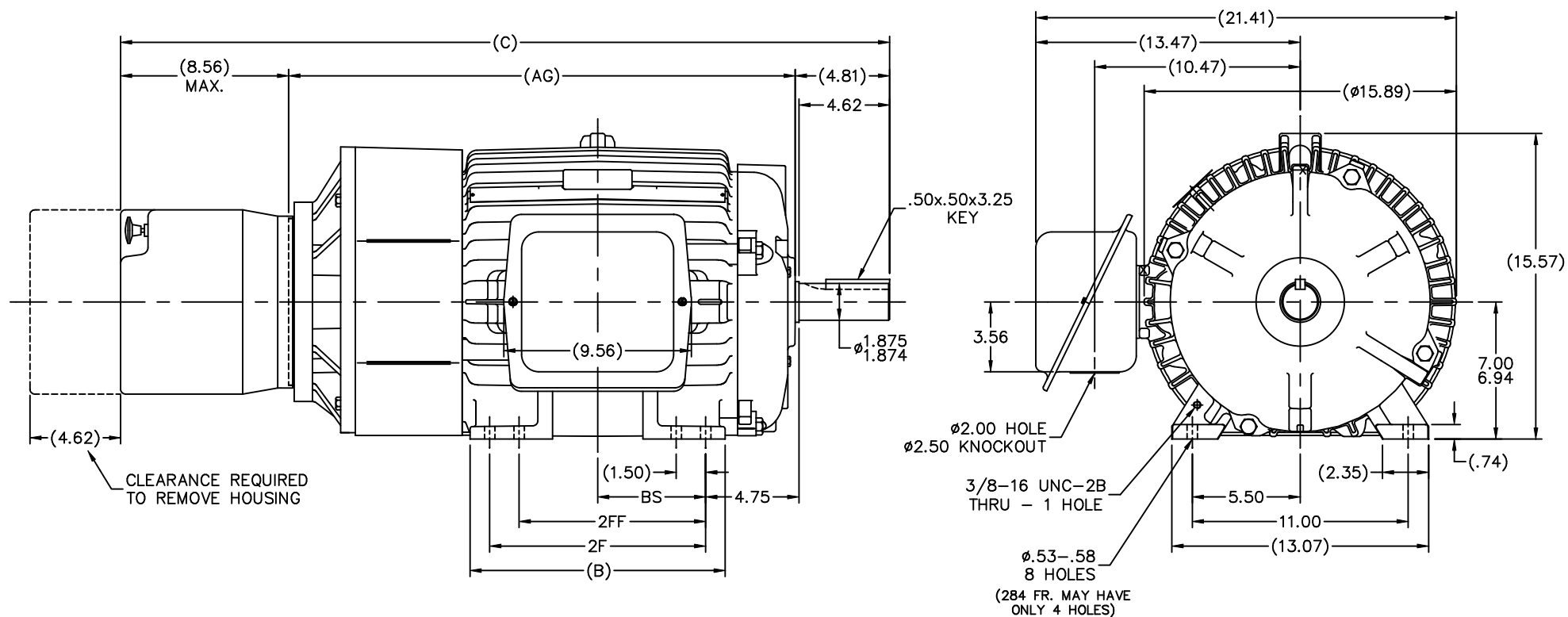
Nameplate Specifications

Phase	3	Output HP	10 Hp
Output KW	7.5 kW	Voltage	480 V
Speed	880 rpm	Service Factor	1
Frame	284TV	Enclosure	Totally Enclosed Fan Cooled
Thermal Protection	Thermostat	Efficiency	89.5 %
Ambient Temperature	40 °C	Frequency	60 Hz
Current	13.9 A	Power Factor	71
Duty	Continuous	Insulation Class	H
Design Code	A	KVA Code	G
Drive End Bearing Size	311	Opp Drive End Bearing Size	311
UL	Recognized	CSA	Y
CE	Y	IP Code	43
Number of Speeds	1		

Technical Specifications

Electrical Type	Squirrel Cage Inverter Duty	Starting Method	Inverter Only
Poles	8	Rotation	Reversible
Resistance Main	.745 Ohms	Mounting	Rigid Base
Motor Orientation	Shaft Up	Drive End Bearing	Ball
Opp Drive End Bearing	Ball	Frame Material	Cast Iron
Shaft Type	T	Assembly/Box Mounting	W8
Outline Drawing	B-SS311822-1425	Connection Drawing	A-EE7300T

This is an uncontrolled document once printed or downloaded and is subject to change without notice. Date Created:09/24/2024



NOTES:

- C'BOX CAN ONLY BE ROTATED CLOCKWISE UP TO 270° FROM ITS ORIGINAL POSITION.
- NAMEPLATE TO BE READ FROM CONDUIT BOX SIDE OF MOTOR.
- C'BOX CAN BE MOUNTED ON OPPOSITE SIDE BY REMOVING BRACKETS AND TURNING FRAME 180°.

									TOLERANCES UNLESS SPECIFIED		MARATHON ELECTRIC	DRAWN MSG 01-19-2006			
									DEC.	INCHES		CHK	ML	01-19-2006	
									.X	±.1				APPD	BW 01-20-2006
1275	284T	37.67	24.30	12.50	9.50	---	---	4.75	.XX	±.03	TITLE	OUTLINE - TEFC			
1425	284/286T	39.17	25.80	13.00	11.00	9.50	---	5.50	.XXX	±.005	280T FR. - BB - STD - 12.50 LAM	SCALE 1=5			
									.XXXX	±.0005	MAT'L	REF			
									NO.	REVISION	BY & DATE	CHK	ANG	±7'30"	FINISH
THIS DRAWING IN DESIGN AND DETAIL IS OUR PROPERTY AND MUST NOT BE USED EXCEPT IN CONNECTION WITH OUR WORK ALL RIGHTS OF DESIGN AND INVENTION ARE RESERVED THIS IS AN ELECTRONICALLY GENERATED DOCUMENT - DO NOT SCALE THIS PRINT									RFP	01-25-2006	CAD FILE	SS311822		SIZE	DRAWING NO. PAGE OF REV.
									DIST	LB		B	SS311822		

THREE PHASE - SINGLE VOLTAGE
MOTOR - CONDUIT BOX @ 'A'

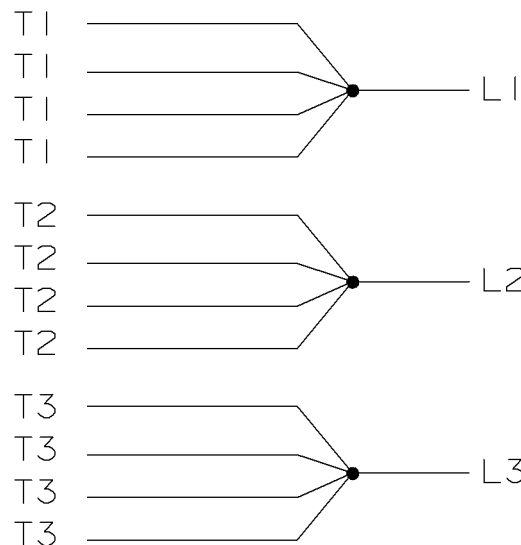
A- EE7300T

TO REVERSE ROTATION:
INTERCHANGE ANY TWO LINE
LEAD CONNECTIONS

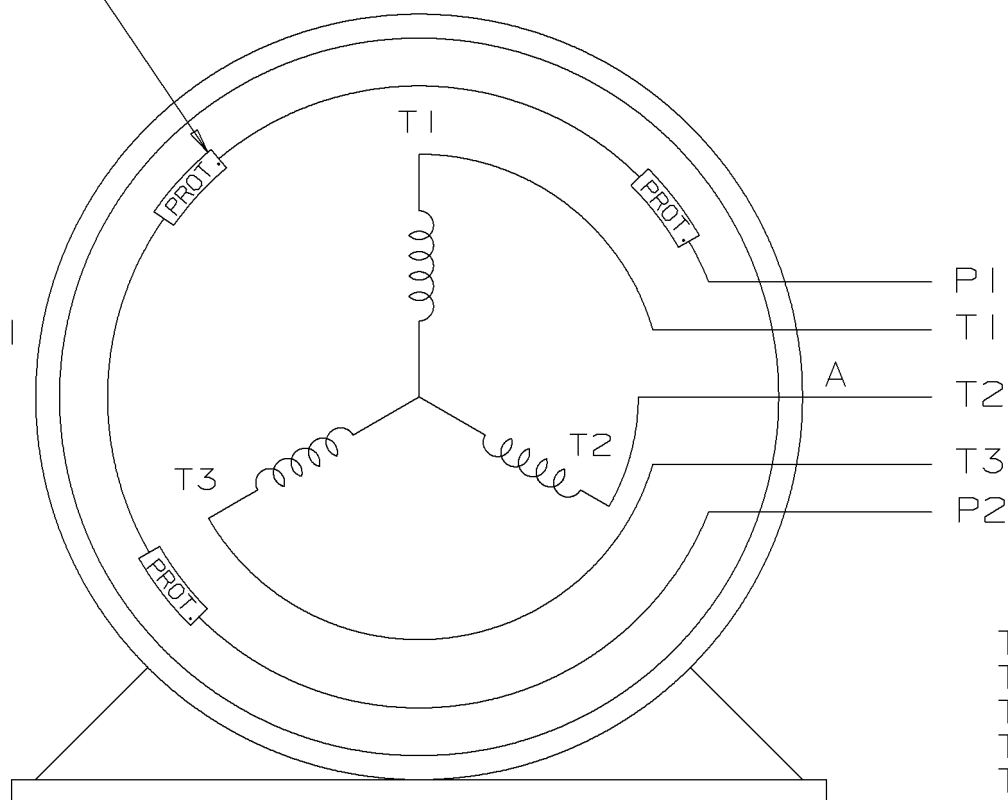
NOTE FOR FACTORY USE ONLY:
TO SURGE TEST:

FOR 3 LEAD COMMON CONNECT:
CONNECT P1 TO T1 THEN P2 TO L1
FOR 6 LEAD COMMON CONNECT:
CONNECT P1 TO BOTH T1
THEN P2 TO L1

IF MOTOR HAS 12 LEADS




3 THERMO - PROTECTORS
CONNECTED IN SERIES.



VIEW OF TERMINAL END

T2BM
T6AW
T6AL
T6Z
T4EG
T4BF
T8A
T6H
T6A
T4AX
T4A
T2A
T2F

				<div>✓</div> <div>MAX. SURFACE ROUGHNESS UNLESS NOTED OTHERWISE</div>	UNLESS OTHERWISE SPECIFIED DIMENSIONS ARE IN INCHES TOL. ON XX± XXX±.005 XXXX±.0005 ANGLES±				
1 4	06-03-97	ADDED SURGE TESTER NOTE - FOR FACTORY USE ONLY CN 24255	MH	MATL SPEC	<div></div> <div>WAUSAU, WISCONSIN 54401</div>		DRAWN BY LZ	01-04-94	
				FINISH			CHKD BY ML	01-20-94	
1 3	01-24-94	REDRAWN ON CADD - NO CHANGE	LZ				APPD BY GK	01-20-94	
REV	DATE	CHANGE	NAME	PART NAME CONNECTION DIAGRAM SINGLE VOLT - 3Ø MOTOR WITH PROTECTOR				DRWG NO A- EE7300T	
SHOP BOOK		PURCHASED	DISTRIBUTION - WA - LB - WP - LM - YK			CADD FILE NO.	EE7300TX		