

PRODUCT INFORMATION PACKET



Model No: 284THFNA16531
Catalog No: 284THFNA16531
25,1800,TEFC,284TC,3/60/460

Regal and Marathon are trademarks of Regal Rexnord Corporation or one of its affiliated companies.
©2024 Regal Rexnord Corporation, All Rights Reserved. MC017097E



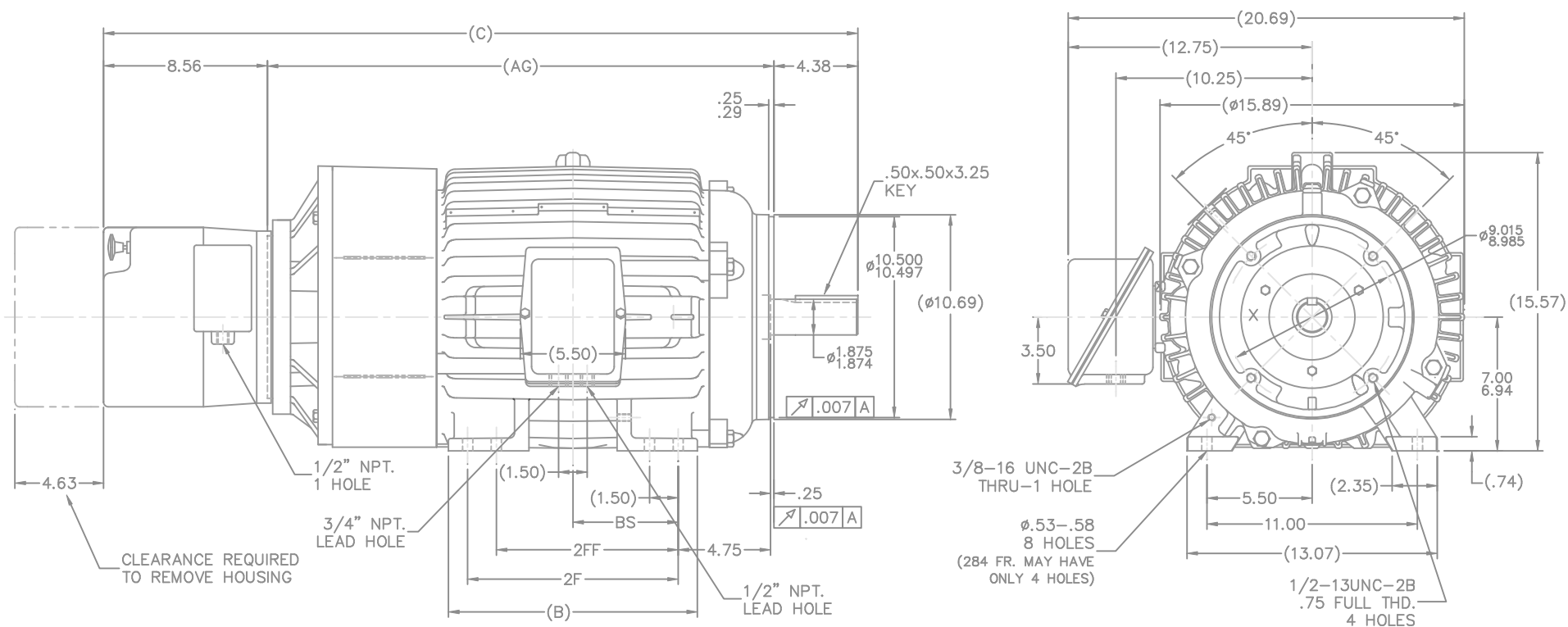
Nameplate Specifications

Phase	3	Output HP	25 Hp
Output KW	18.7 kW	Voltage	460 V
Speed	1774 rpm	Service Factor	1
Frame	284TCV	Enclosure	Totally Enclosed Fan Cooled
Thermal Protection	Thermostat	Efficiency	93.6 %
Ambient Temperature	40 °C	Frequency	60 Hz
Current	31.0 A	Power Factor	81
Duty	Continuous	Insulation Class	F
Design Code	B	KVA Code	G
Drive End Bearing Size	311	Opp Drive End Bearing Size	311
UL	Recognized	CSA	Y
CE	Y	IP Code	55
Number of Speeds	1		

Technical Specifications

Electrical Type	Squirrel Cage Inverter Duty	Starting Method	Inverter Only
Poles	4	Rotation	Reversible
Resistance Main	.263 Ohms	Mounting	Rigid Base
Motor Orientation	Shaft Down	Drive End Bearing	Ball
Opp Drive End Bearing	Ball	Frame Material	Cast Iron
Shaft Type	T	Assembly/Box Mounting	W6
Outline Drawing	B-SS311824-1425	Connection Drawing	A-EE7300AK

This is an uncontrolled document once printed or downloaded and is subject to change without notice. Date Created:09/24/2024



NOTES:

1. BOX CAN ONLY BE ROTATED CLOCKWISE UP TO 270° FROM ITS ORIGINAL POSITION.
2. NAMEPLATE TO BE READ FROM CONDUIT BOX SIDE OF MOTOR.
3. BOX CAN BE MOUNTED ON OPPOSITE SIDE BY REMOVING BRACKETS AND TURNING FRAME 180°.

DASH	FRAME	B	C	AG	2F	2FF	BS
1275	284TC	12.50	37.13	24.19	9.50	--	4.75
1425	284/286TC	13.00	38.63	25.69	11.00	9.50	5.50

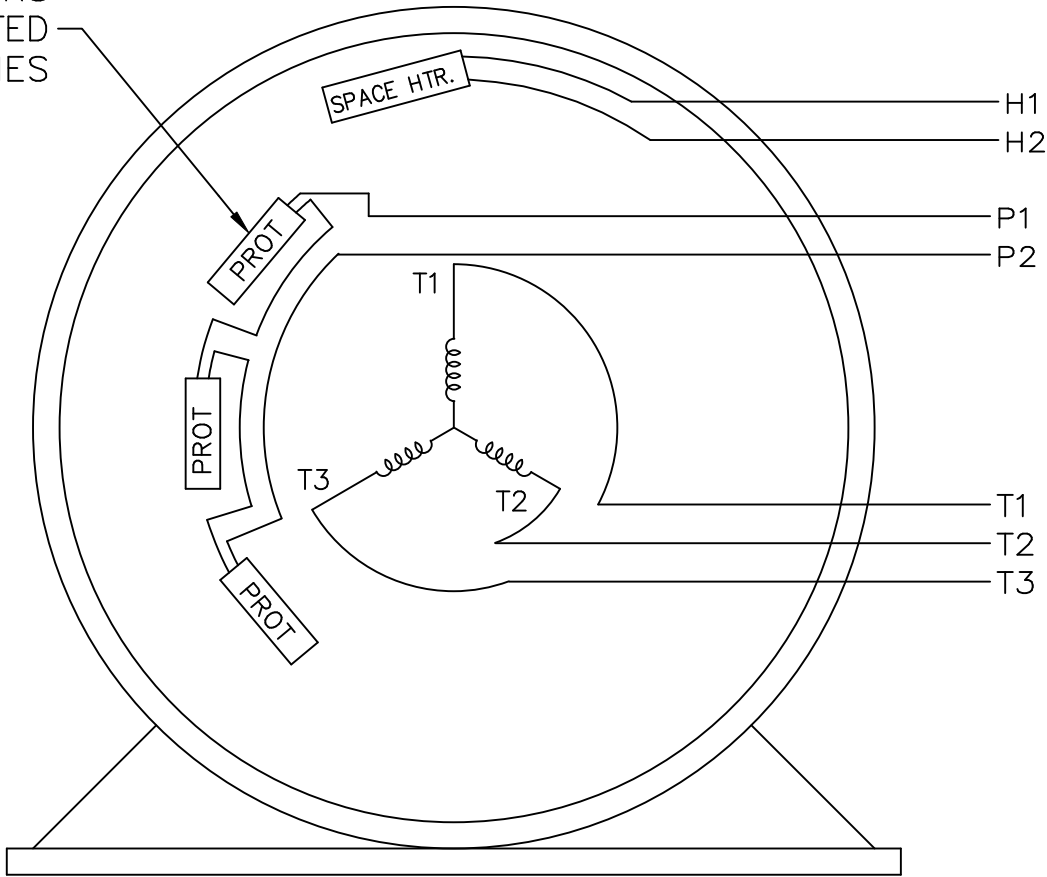
			TOLERANCES UNLESS SPECIFIED		MARATHON ELECTRIC	DRAWN RWR 01-20-2006	
			DEC.	INCHES		CHK	ML 01-23-2006
3	SWITCH C'BOX HOLE DIM'S PER CN40100	RWR 03-28-2006	ML	.XX ±.03	TITLE OUTLINE TEFC -W/STEARNS 87,400 BRAKE 280TC FR. -BB -STD -12.50 LAM	APPD	BW 01-23-2006
2	REVISED C'BOX HOLES WERE 1.90 APART CN40100	RJW 03-23-2006	ML	.XXX ±.005		SCALE	1=5.3
1	ADD DIM FOR BKT. MTG. & AUX. BRAKE C'BOX	RWR 02-20-2006	ML	.XXXX ±.0005		REF	B-SS311770
NO.	REVISION	BY & DATE	CHK	ANG ±7'30"		FMF	MU67859
THIS DRAWING IN DESIGN AND DETAIL IS OUR PROPERTY AND MUST NOT BE USED EXCEPT IN CONNECTION WITH OUR WORK ALL RIGHTS OF DESIGN AND INVENTION ARE RESERVED THIS IS AN ELECTRONICALLY GENERATED DOCUMENT - DO NOT SCALE THIS PRINT					RFP 01-23-2006	CAD FILE ss311824	SIZE B
					DIST LB		DRAWING NO. SS311824
							PAGE 1 OF 1 REV. 3

P1 AND P2 PROTECTORS
TO VOLTAGE CONTROL

EE7300AK-LN

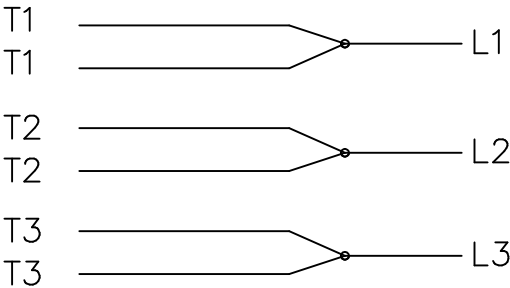
TO REVERSE ROTATION:
INTERCHANGE ANY TWO
LINE LEAD CONNECTIONS.

PROTECTORS
CONNECTED
IN SERIES




VIEW OF TERMINAL END

IF MOTOR HAS MULTIPLE
T'S PER LEAD CONNECT
TOGETHER LIKE T'S



A-9806 DECAL

				TOLERANCES UNLESS SPECIFIED			DRAWN KL 02-12-2003					
				DEC.	INCHES		CHK GFH 02-13-2003					
				.X	± -		APPD EAB 02-13-2003					
				.XX	± -		SCALE 1=1					
				.XXX	± -		REF					
1	NEW DRAWING	MU45325	KL 02-13-2003	.XXXX	± -	TITLE CONNECTION DIAGRAM – EXTERNAL SINGLE VOLTAGE – 3" MOTOR			MAT'L.			
NO.	REVISION		BY & DATE	CHK	ANG	± -	FINISH			FMF		
THIS DRAWING IN DESIGN AND DETAIL IS OUR PROPERTY AND MUST NOT BE USED EXCEPT IN CONNECTION WITH OUR WORK ALL RIGHTS OF DESIGN AND INVENTION ARE RESERVED THIS IS AN ELECTRONICALLY GENERATED DOCUMENT – DO NOT SCALE THIS PRINT				RFP		CAD FILE EE7300AK-LN			SIZE	DRAWING NO.	PAGE OF	REV.
				DIST WA-LB					A	EE7300AK-LN		1