

PRODUCT INFORMATION PACKET

Model No: 256VTDC6026

Catalog No: V116A

Vertical Pump Motor, 20 & 15 HP, 3 Ph, 60 & 50 Hz, 230/460 & 190/380 V, 1800 & 1500 RPM,
256TPV Frame, WPI



Regal and Marathon are trademarks of Regal Rexnord Corporation or one of its affiliated companies.

©2023 Regal Rexnord Corporation, All Rights Reserved. MC017097E

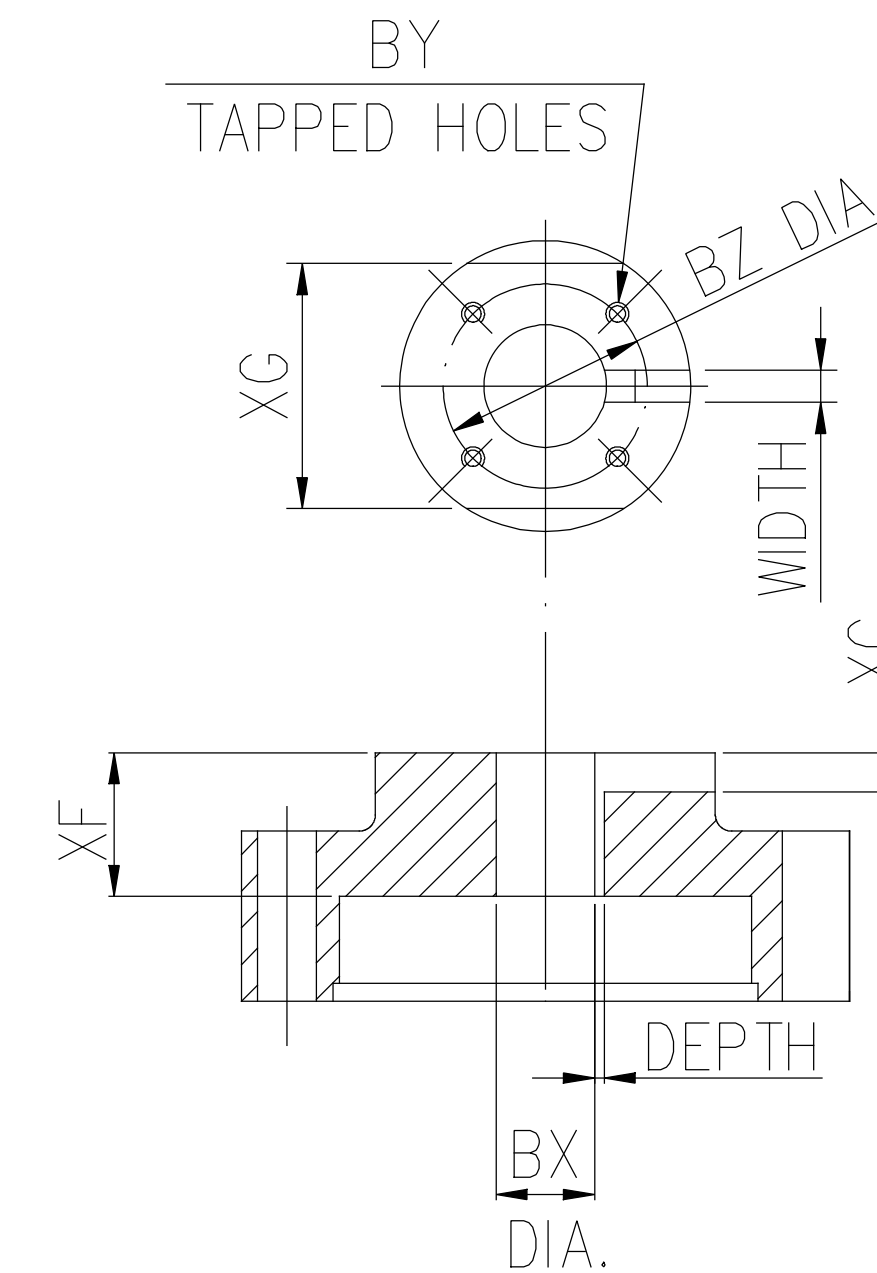
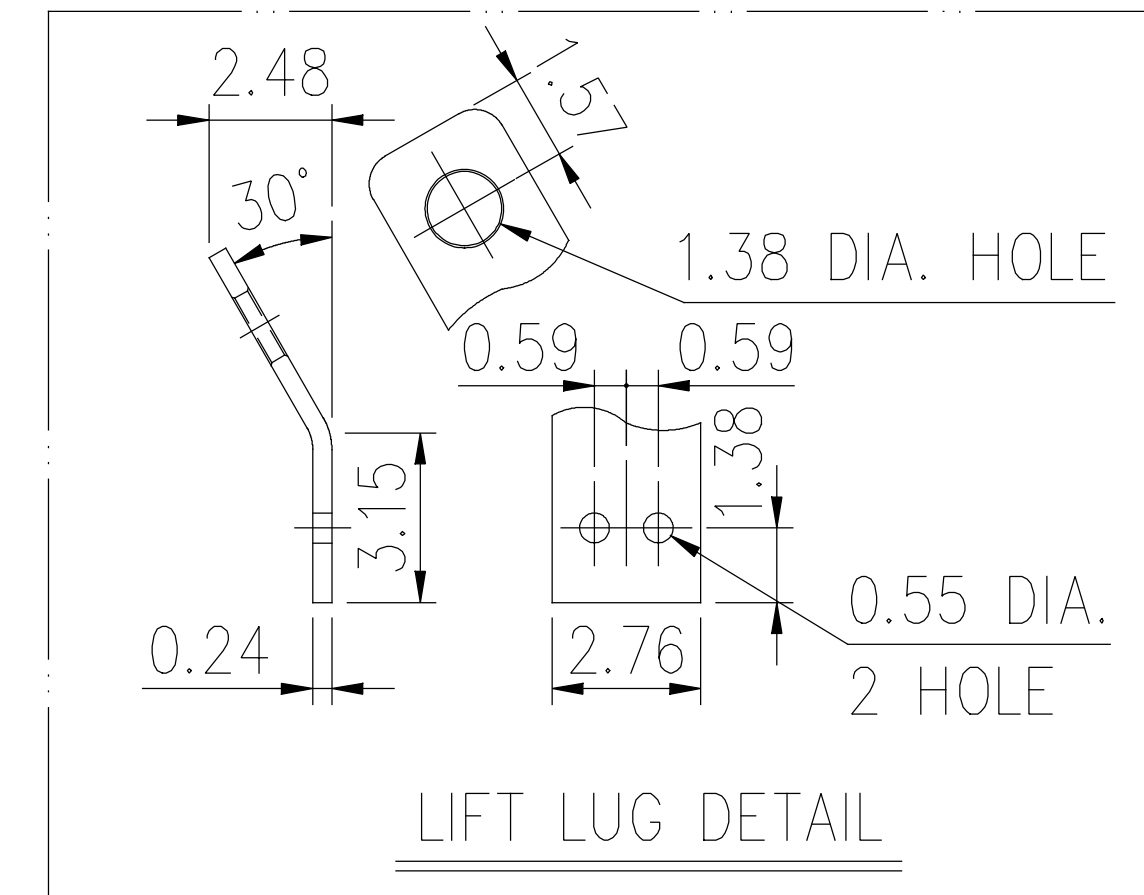
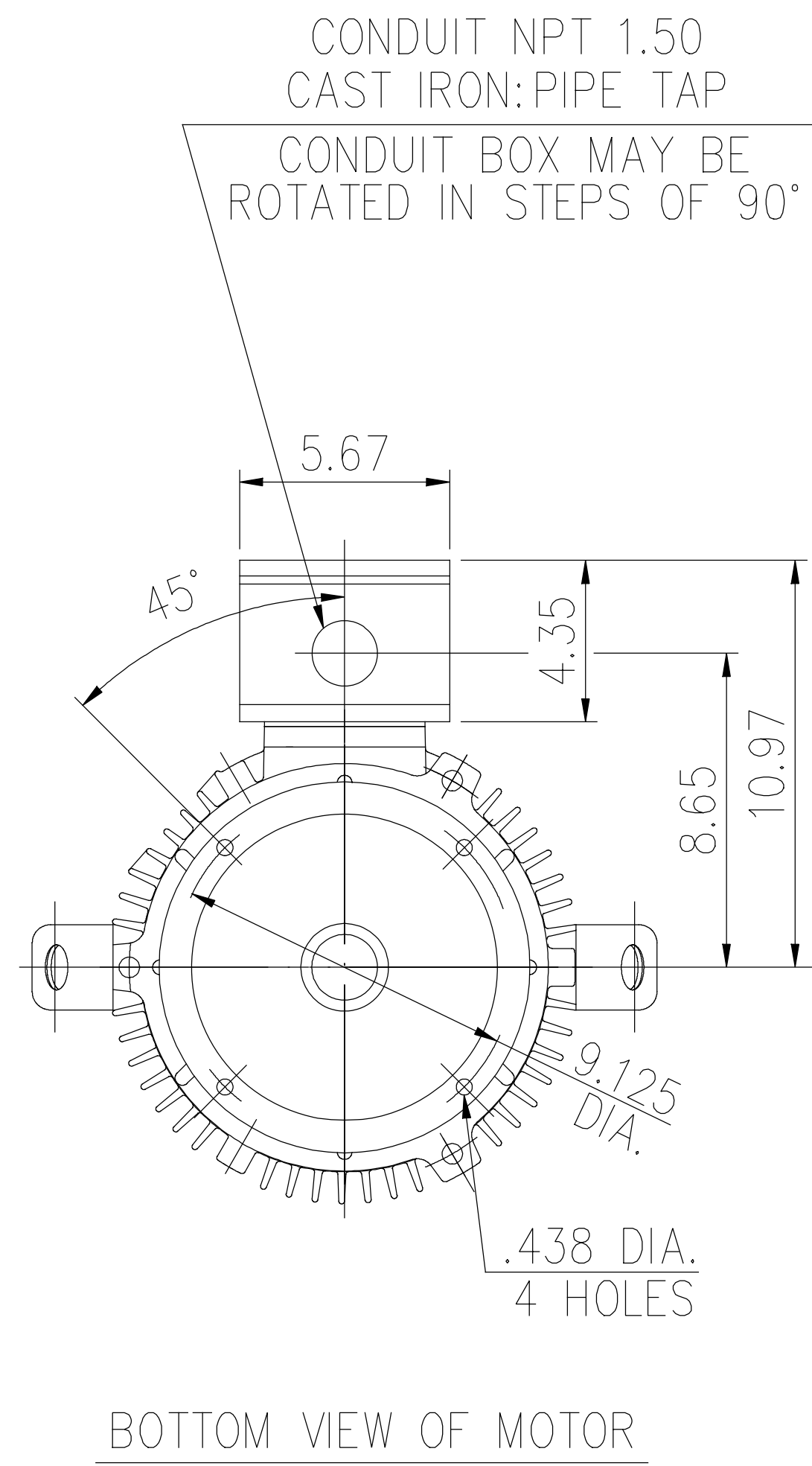
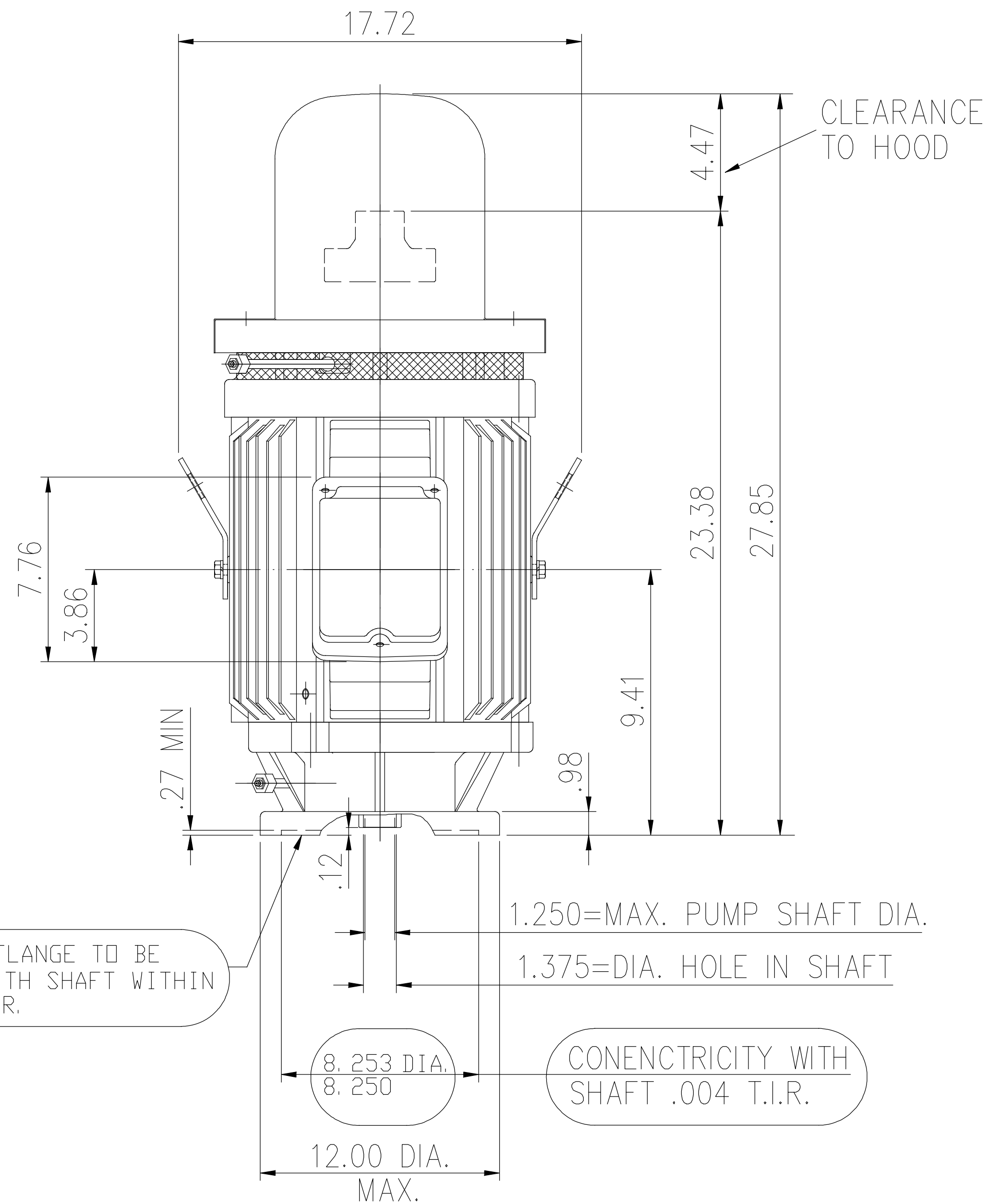
Nameplate Specifications

Phase	3	Output HP	20 & 15 Hp
Output KW	14.9 & 11.2 kW	Voltage	230/460 & 190/380 V
Speed	1765 & 1470 rpm	Service Factor	1.15 & 1.15
Frame	256TPV	Enclosure	Weather Protected 1
Thermal Protection	No Protection	Efficiency	93 & 91.7 %
Ambient Temperature	40 °C	Frequency	60 & 50 Hz
Current	50/24.9 & 46.5/23.2 A	Power Factor	81
Duty	Continuous	Insulation Class	F
Design Code	B	KVA Code	G
Drive End Bearing Size	6309	Opp Drive End Bearing Size	7311B
UL	Recognized	CSA	Y
CE	Y	IP Code	23
Number of Speeds	1		

Technical Specifications

Electrical Type	Squirrel Cage Inverter Rated	Starting Method	Part Wdg Start Low Volt Only & Wye Start Delta Run Or Inverter
Poles	4	Rotation	Counterclockwise Rotation, Reversible without Non-Reversible Ratchet
Resistance Main	.546 Ohms	Mounting	Round
Motor Orientation	Shaft Down	Drive End Bearing	Ball
Opp Drive End Bearing	Single Angular Contact	Frame Material	Cast Iron
Shaft Type	TP	Overall Length	27.85 in
Shaft Diameter	1.375 in	Shaft Extension	0.12 in
Assembly/Box Mounting	F1/F2 CAPABLE	Inverter Load	VARIABLE 3:1
Outline Drawing	SS620835	Connection Drawing	EE7308DX

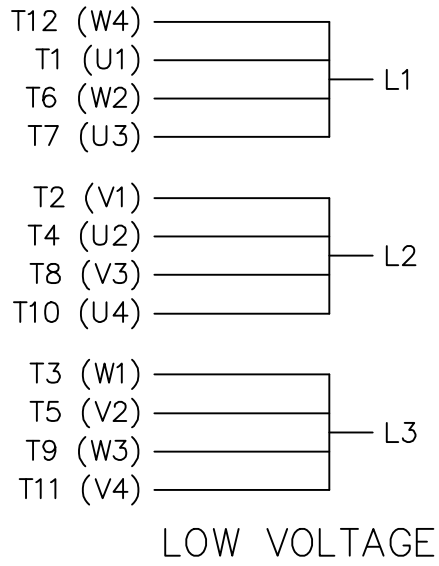
COUPLING	BX DIA.	KEYWAY		BY	BZ	XF	XC
		WIDE	DEEP				
	1.001	0.250	0.140	10-32UNF	1.375	1.650	0.430
	1.188	0.250	0.140	1/4-20UNC	1.750	1.650	0.430
	1.251	0.250	0.140	1/4-20UNC	1.750	1.650	0.430
	0.751	N/A	N/A	N/A	N/A	N/A	N/A



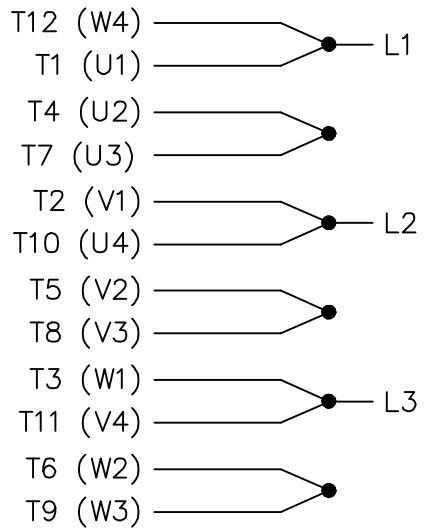
- (1) DIMENSIONS ARE IN INCHES.
- (2) DRIVE END BEARING 6309
OPPOSITE DRIVE END BEARING 7311B
- (3) APPROXIMATE WEIGHT = 370 LBS

- (4) END OF LINE TESTS - SPECIFIC TO EACH RATING
 - *NO LOAD AMPS @ FULL VOLTAGE
 - *NO LOAD WATTS @ FULL VOLTAGE
 - *VIBRATION MEETS MG-1 STANDARD
 - BALANCE 0.15 IN/S 3.8 MM/S

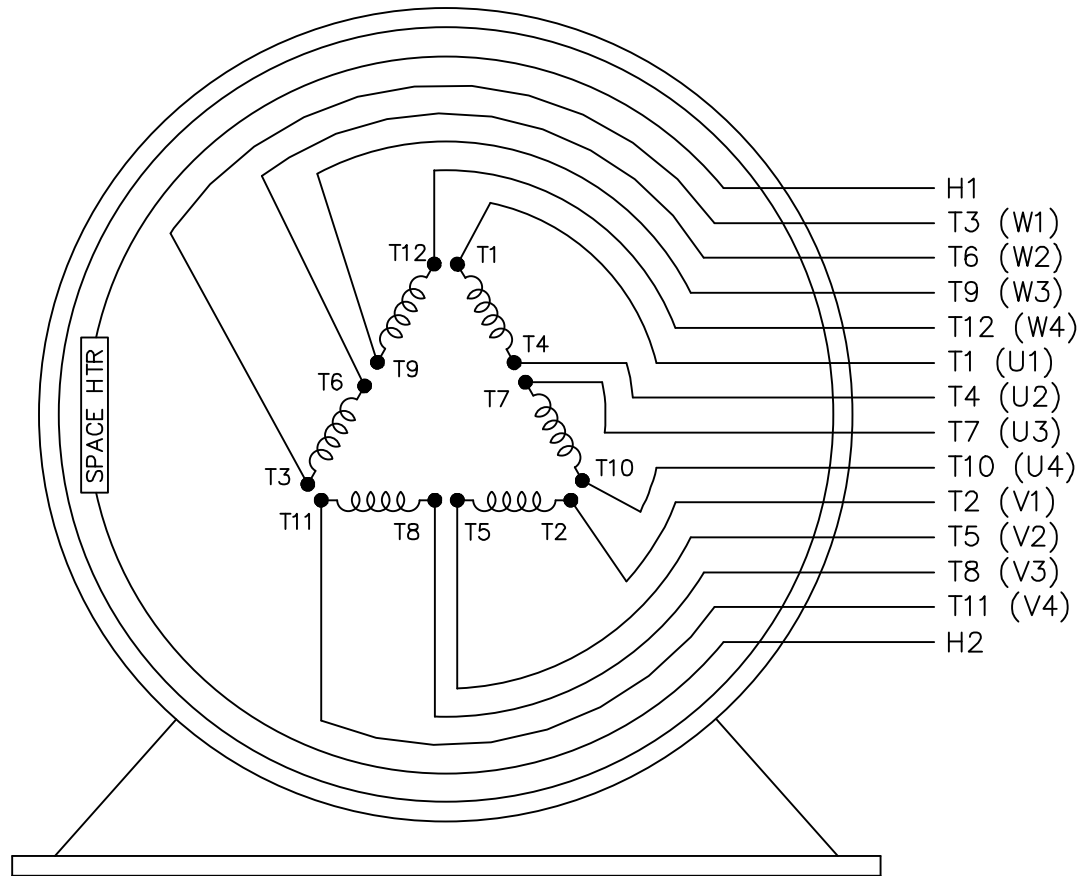
				TOLERANCES UNLESS SPECIFIED		REGAL REGAL-BELOIT CORPORATION		DRAWN	
				DEC.	INCHES			CHK	APPD
				.X	±.1	TITLE OUTLINE 254/256TP12 FRAME		SCALE	
B	UPDATED PER MARK-UPS	ECO-0151417	WGJ 9-7-2018	AL .XXX	±.005			REF	
A	RELEASED FOR PRODUCTION	ECO-0125213	WGJ 6-13-2017	AL .XXXX	±.0005	MAT'L.		FMF	
NO.	REVISION	BY & DATE	CHK	ANG	±7'30"	FINISH		PREV	
THIS DRAWING IN DESIGN AND DETAIL IS OUR PROPERTY AND MUST NOT BE USED EXCEPT IN CONNECTION WITH OUR WORK ALL RIGHTS OF DESIGN AND INVENTION ARE RESERVED THIS IS AN ELECTRONICALLY GENERATED DOCUMENT - DO NOT SCALE THIS PRINT				RFP	CAD FILE		SIZE	DRAWING NO.	REV.
				DIST			B	SS620835	B



LOW VOLTAGE



HIGH VOLTAGE



VIEW OF TERMINAL END

				TOLERANCES UNLESS SPECIFIED		MARATHON ELECTRIC	DRAWN KL 02-05-1999		
				DEC.	INCHES		CHK DJK 02-05-1999		
				.X	± -	TITLE CONNECTION DIAGRAM 12 LEADS - 3 PHASE - 2/1 DELTA	APPD DJK 02-05-1999	SCALE 1=1	
				.XX	± -		REF		
2	ADDED IEC MARKINGS	MU110339	MSG 10-15-2012	SJW .XXX	± -	MAT'L.	FMF MU23624		
1	NEW DRAWING	MU23624	KL 02-05-1999	DJK .XXXX	± -		PREV		
NO.	REVISION	BY & DATE	CHK	ANG	± -	FINISH			
			RFP	02-05-1999		CAD FILE EE7308DX	SIZE A	DRAWING NO. EE7308DX	PAGE OF 2
THIS DRAWING IN DESIGN AND DETAIL IS OUR PROPERTY AND MUST NOT BE USED EXCEPT IN CONNECTION WITH OUR WORK ALL RIGHTS OF DESIGN AND INVENTION ARE RESERVED THIS IS AN ELECTRONICALLY GENERATED DOCUMENT - DO NOT SCALE THIS PRINT				DIST					REV. 2



**P.O. BOX 8003
WAUSAU, WI 54401-8003
PH. 715-675-3311**

CERTIFICATION DATA SHEET

CUSTOMER:
ORDER #:
CONN. DIAGRAM: EE7308DX
OUTLINE: SS620835
WINDING #: TPE2564001 1

CUSTOMER PO#:
MODEL #: 256VTDC6026 AA
CUSTOMER PART #:
MOUNTING: F1/F2 CAPABLE

TYPICAL MOTOR PERFORMANCE DATA

HP	KW	SYNC. RPM	F.L. RPM	FRAME	ENCLOSURE	KVA CODE	DESIGN
20&15	14.9&11.2	1800	1765&1470	256TPV	WPI	G	B

PH	Hz	VOLTS	AMPS	START TYPE	DUTY	INSL	S.F.	AMB°C
3	60/50	230/460&190/380	50/24.9&46.5/23.2	PWS (LV ONLY) & YDRUN OR INV	CONTINUOUS	F	1.15/1.15	40

FULL LOAD EFF:	93&91.7	3/4 LOAD EFF:	93	1/2 LOAD EFF:	92.4	GTD. EFF		ELEC. TYPE	
FULL LOAD PF:	81&80	3/4 LOAD PF:	77.5	1/2 LOAD PF:	68	92.4		SQ CAGE INV RATED	

F.L. TORQUE	LOCKED ROTOR AMPS	L.R. TORQUE	B.D. TORQUE	F.L. RISE°C
59.5 LB-FT	290 / 145	158 LB-FT 265 %	160 LB-FT 268 %	38

SOUND PRESSURE @ 3 FT.	SOUND POWER	ROTOR WK^2	MAX. WK^2	SAFE STALL TIME	STARTS / HOUR	APPROX. MOTOR WGT
68 dBA	78 dBA	2.1 LB-FT^2	288 LB-FT^2	12 SEC.	2	385 LBS.

***** SUPPLEMENTAL INFORMATION *****

DE BRACKET TYPE	ODE BRACKET TYPE	MOUNT TYPE	ORIENTATION	SEVERE DUTY	HAZARDOUS LOCATION	DRIP COVER	SCREENS	PAINT
P-BASE-12	STANDARD	ROUND	SHAFT DOWN	FALSE	NONE	TRUE	RODENT	BLUE (ENAMEL)

BEARINGS		GREASE	SHAFT TYPE	SPECIAL DE	SPECIAL ODE	SHAFT MATERIAL	FRAME MATERIAL
DE	ODE						
BALL	SINGLE ANGULAR CONTACT	POLYREX EM	TP	NONE	NONE	1045 HOT ROLLED (C-204)	CAST IRON
6309	7311B						

THERMO-PROTECTORS				THERMISTORS	CONTROL	SPACE HEATERS
THERMOSTATS	PROTECTORS	WDG RTDs	BRG RTDs			
NONE	NOT	NONE	NONE	NONE	FALSE	110 VOLTS

*
N
O
T
E
S
*

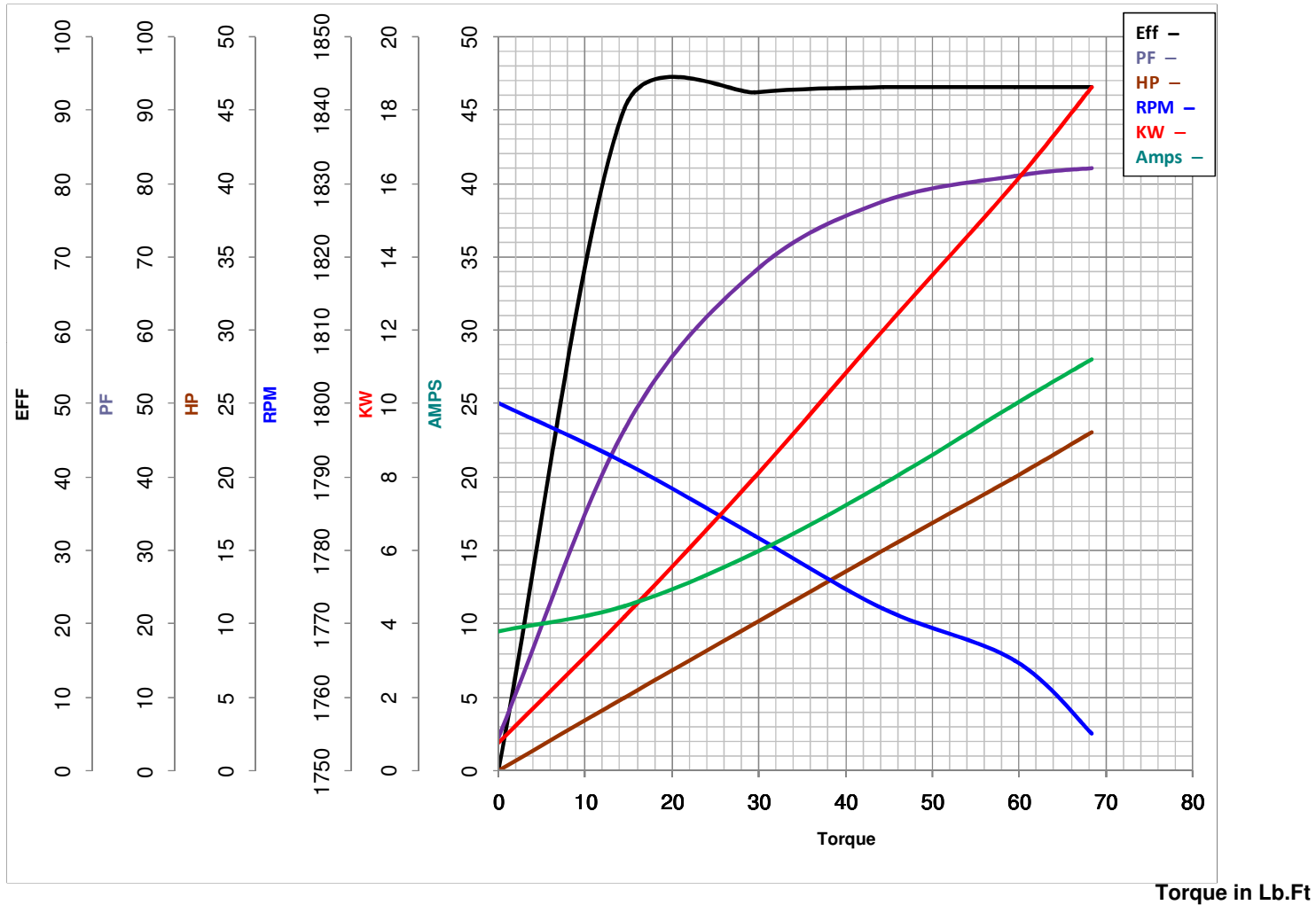
INVERTER TORQUE: VARIABLE 3:1
INV. HP SPEED RANGE: NONE
ENCODER: NONE NONE NONE NONE NONE PPR
BRAKE: NONE NONE NONE P/N NONE NONE NONE NONE FT-LB NONE V NONE Hz

PREPARED BY: Dinesh
Suddula **DATE:**
02/14/2019 03:59:22 AM
FORM 3531 REV.3 02/07/99
** Subject to change without notice.



MARATHON ELECTRIC CORPORATION
TYPICAL PERFORMANCE CURVE for AC MOTOR

Customer _____ Curve at 460 Volts HP 20&15 PHASE 3
60 HZ
20 HP VOLTS 230/460&190/380
 Model No 256VTDC6026
 Catalog No V116A HZ 60&50 RPM 1765&1470



FL TORQUE	<u>59.5</u> Lb.Ft	FL AMPS	<u>50/24.9</u>
BD TORQUE	<u>160.0</u> Lb.Ft	PU TORQUE	<u>98.0</u> Lb.Ft
LR TORQUE	<u>158</u> Lb.Ft	LR AMPS	<u>145</u>
WINDING	TPE2564001-	Date	3/7/2019