

PRODUCT INFORMATION PACKET



Model No: 256TTTPA8859
Catalog No: 256TTTPA8859
20,1800,TENV,256TCZ,3/60/460

Regal and Marathon are trademarks of Regal Rexnord Corporation or one of its affiliated companies.
©2024 Regal Rexnord Corporation, All Rights Reserved. MC017097E



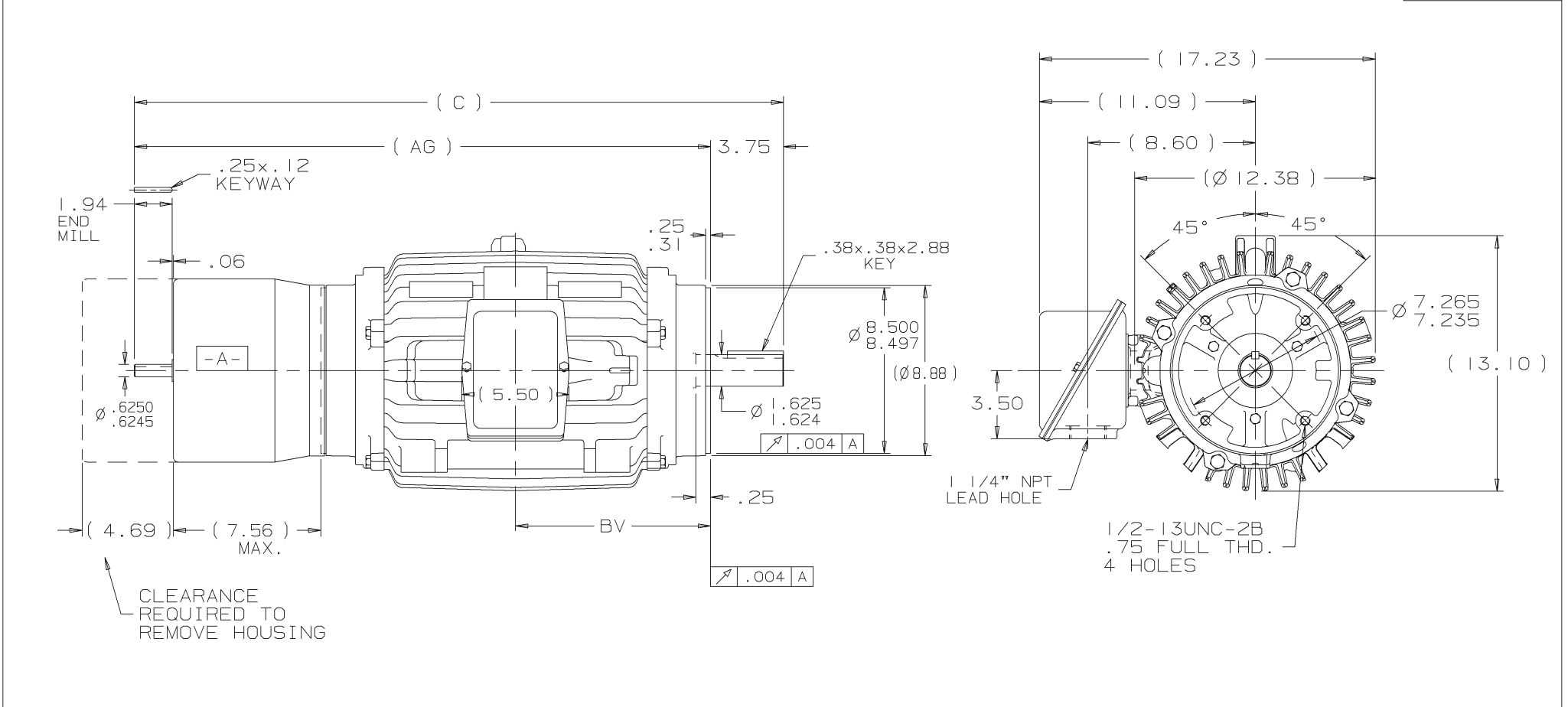
Nameplate Specifications

Phase	3	Output HP	20 Hp
Output KW	14.9 kW	Voltage	460 V
Speed	1755 rpm	Service Factor	1
Frame	256TCZ	Enclosure	Totally Enclosed Non Ventilated
Thermal Protection	Thermostat	Efficiency	88.5 %
Ambient Temperature	40 °C	Frequency	60 Hz
Current	26.0 A	Power Factor	81
Duty	60 Minute	Insulation Class	F
Design Code	B	KVA Code	G
Drive End Bearing Size	309	Opp Drive End Bearing Size	309
UL	No	CSA	Y
IP Code	54	Number of Speeds	1

Technical Specifications

Electrical Type	Squirrel Cage Induction Run	Starting Method	Across The Line
Poles	4	Rotation	Reversible
Resistance Main	.484 Ohms	Mounting	Round
Motor Orientation	Horizontal	Drive End Bearing	Ball
Opp Drive End Bearing	Ball	Frame Material	Cast Iron
Shaft Type	Special Extension Both Sides	Assembly/Box Mounting	F1/F2 CAPABLE
Outline Drawing	B-SS203236-1350	Connection Drawing	A-EE7300S

This is an uncontrolled document once printed or downloaded and is subject to change without notice. Date Created:09/07/2024




NOTES:

1. C.BOX CAN BE ROTATED IN 90° STEPS
2. C.BOX CAN BE MOUNTED ON OPPOSITE SIDE BY REMOVING BRACKETS AND TURNING FRAME 180°
3. NAMEPLATES TO BE READ FROM CONDUIT BOX SIDE OF MOTOR

- | | | | | | | | | |
|------|-------|-------|-------|-------|--|--|-----|--------|
| | | | | | | | | |
| | | | | | | | | |
| DASH | FRAME | AG | C | BV | | | I | 04-09- |
| 1175 | 254TC | 27.81 | 31.56 | 9.12 | | | | |
| 1350 | 256TC | 29.56 | 33.31 | 10.00 | | | | |
| | | | | | | | REV | DATE |

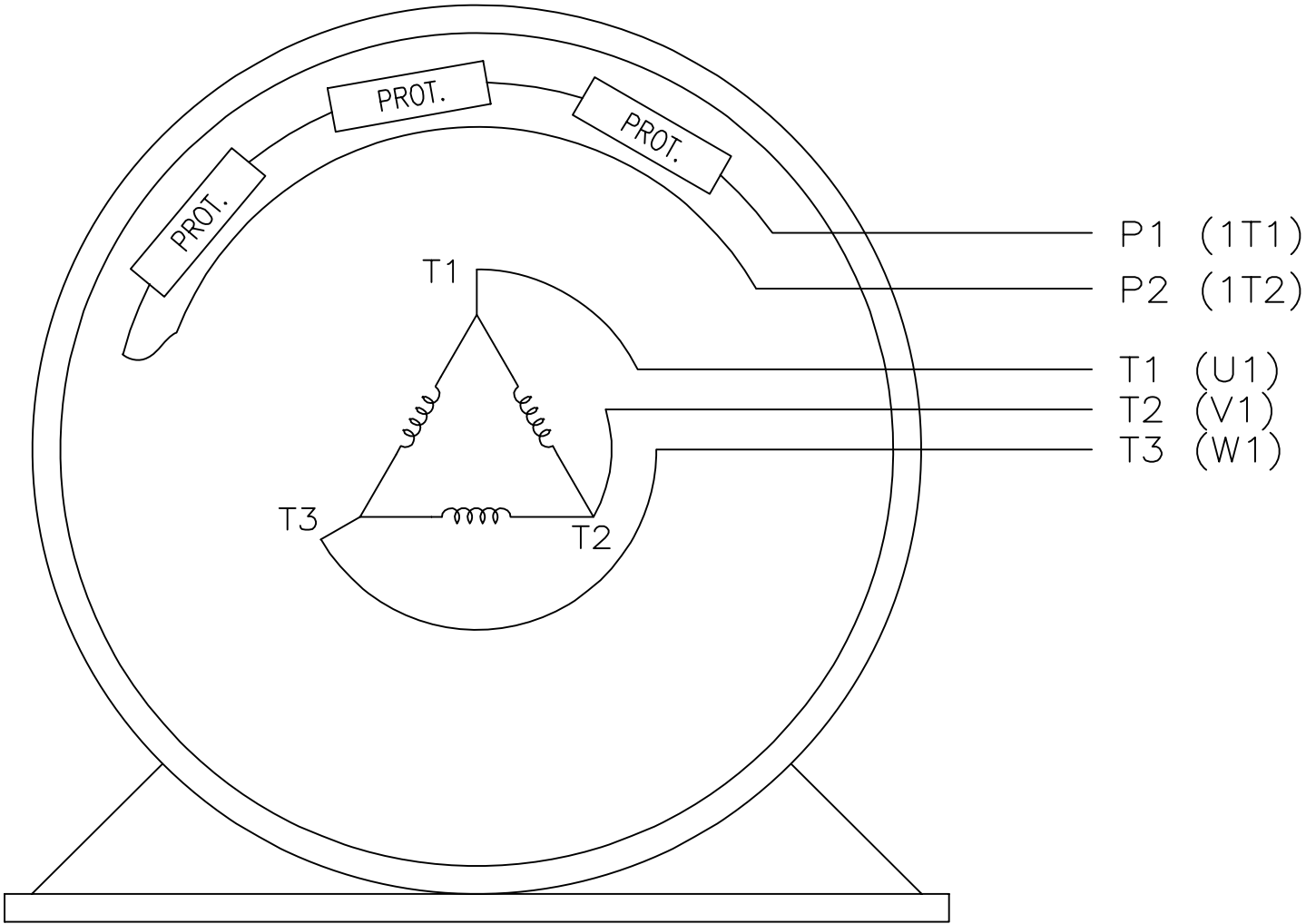
B. SPL ODE: 0.625 x 1.94 IN SEK WITH STEARNS SERIES 87,000 BRAKE

									<input checked="" type="checkbox"/> MAX. SURFACE ROUGHNESS UNLESS NOTED OTHERWISE		UNLESS OTHERWISE SPECIFIED DIMENSIONS ARE IN INCHES TOL. ON XX±.03 XXX±.005 XXXX±.0005 ANGLES± 7°30'			
											MATL SPEC		DRAWN BY MH 04-02-97	
											FINISH		 CHKD BY ML 04-05-97	
DASH	FRAME	AG	C	BV			I	04-09-97	NEW DRAWING		MU14039	MH	APPD BY BW 04-09-97	
1175	254TC	27.81	31.56	9.12										
1350	256TC	29.56	33.31	10.00			REV	DATE	CHANGE		NAME	PART NAME OUTLINE - TENV - CAST C'BOX 250TC FR. - BB - TS - STEARNS BRAKE		DRWG NO B- SS203236
							SHOP BOOK		PURCHASED		DISTRIBUTION - WA - LB - WP - LM - YK		CADD FILE NO. SS203236	

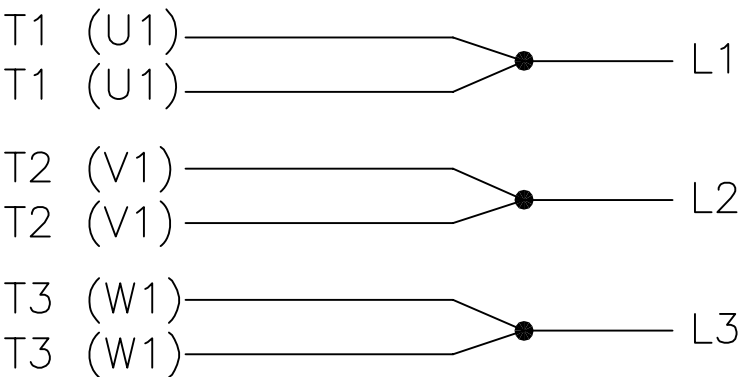
EE7300S

THREE PHASE – SINGLE VOLTAGE MOTOR

TO REVERSE ROTATION:
INTERCHANGE ANY TWO LINE
LEAD CONNECTIONS




IF MOTOR HAS MULTIPLE
T'S PER LEAD CONNECT
TOGETHER LIKE T'S



A-9806 DECAL

VIEW OF TERMINAL END

				TOLERANCES UNLESS SPECIFIED		 REGAL-BELOIT CORPORATION	DRAWN KL 12-15-1999		
				DEC.	INCHES		CHK DJK 12-15-1999		
F	UPDATED TITLE BLOCK	HV 02-27-2014	EWB	.X	± -		APPD DJK 12-15-1999		
3	REMOVED "N.C." FROM PROT.'S MU61770	JJB 08-02-2010		.XX	± -	TITLE CONNECTION DIAGRAM – EXTERNAL SINGLE VOLTAGE 3Ø MOTOR	SCALE 1=1		
2	ADDED IEC MARKINGS MU61770	KL 09-16-2004	EAB	.XXX	± -		REF		
1	NEW DRAWING	KL 12-16-1999		.XXXX	± -	MAT'L.	FMF		
NO.	REVISION	BY & DATE	CHK	ANG	± -	FINISH	PREV		
THIS DRAWING IN DESIGN AND DETAIL IS OUR PROPERTY AND MUST NOT BE USED EXCEPT IN CONNECTION WITH OUR WORK ALL RIGHTS OF DESIGN AND INVENTION ARE RESERVED THIS IS AN ELECTRONICALLY GENERATED DOCUMENT – DO NOT SCALE THIS PRINT			RFP		CAD FILE ee7300s		SIZE A	DRAWING NO. EE7300S	PAGE OF F
			DIST WA-LB-SB						