

PRODUCT INFORMATION PACKET



Model No: 256TTTPA18102
Catalog No: 256TTTPA18102
7.5,900,TEAO,256TV,3/60/50/230/460

Regal and Marathon are trademarks of Regal Rexnord Corporation or one of its affiliated companies.
©2024 Regal Rexnord Corporation, All Rights Reserved. MC017097E



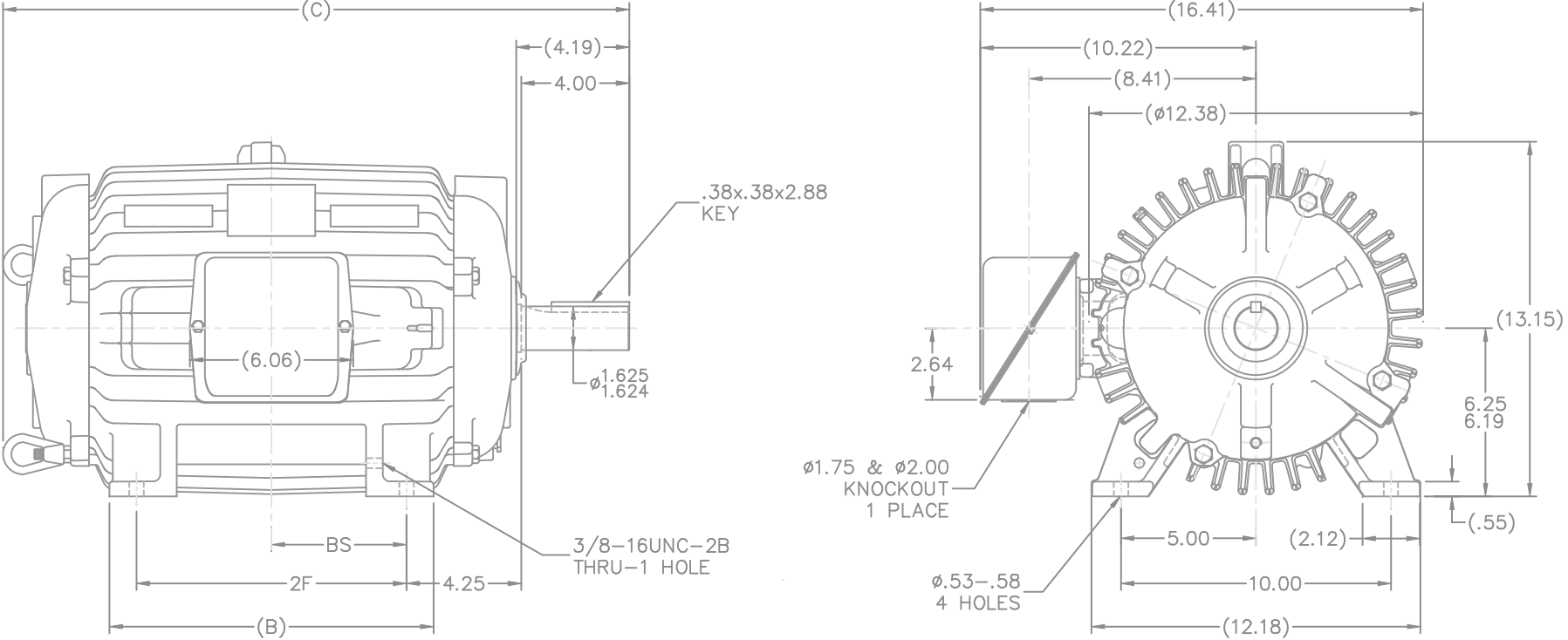
Nameplate Specifications

Phase	3	Output HP	7.50 Hp
Output KW	5.6 kW	Voltage	230/460 V
Speed	860 rpm	Service Factor	1.15
Frame	256TV	Enclosure	Totally Enclosed Air Over
Thermal Protection	No Protection	Efficiency	84 %
Ambient Temperature	40 °C	Frequency	60 Hz
Current	24.0/12.0 A	Power Factor	68
Duty	Continuous	Insulation Class	F
Design Code	B	KVA Code	G
Drive End Bearing Size	309	Opp Drive End Bearing Size	207
UL	Recognized	CSA	Y
CE	N	IP Code	43
Number of Speeds	1		

Technical Specifications


Electrical Type	Squirrel Cage Induction Run	Starting Method	Across The Line
Poles	8	Rotation	Reversible
Resistance Main	1.34 Ohms	Mounting	Rigid Base
Motor Orientation	Shaft Down	Drive End Bearing	Ball
Opp Drive End Bearing	Ball	Frame Material	Cast Iron
Shaft Type	T	Assembly/Box Mounting	W6
Outline Drawing	B-SS203699-1350	Connection Drawing	A-EE7308AG

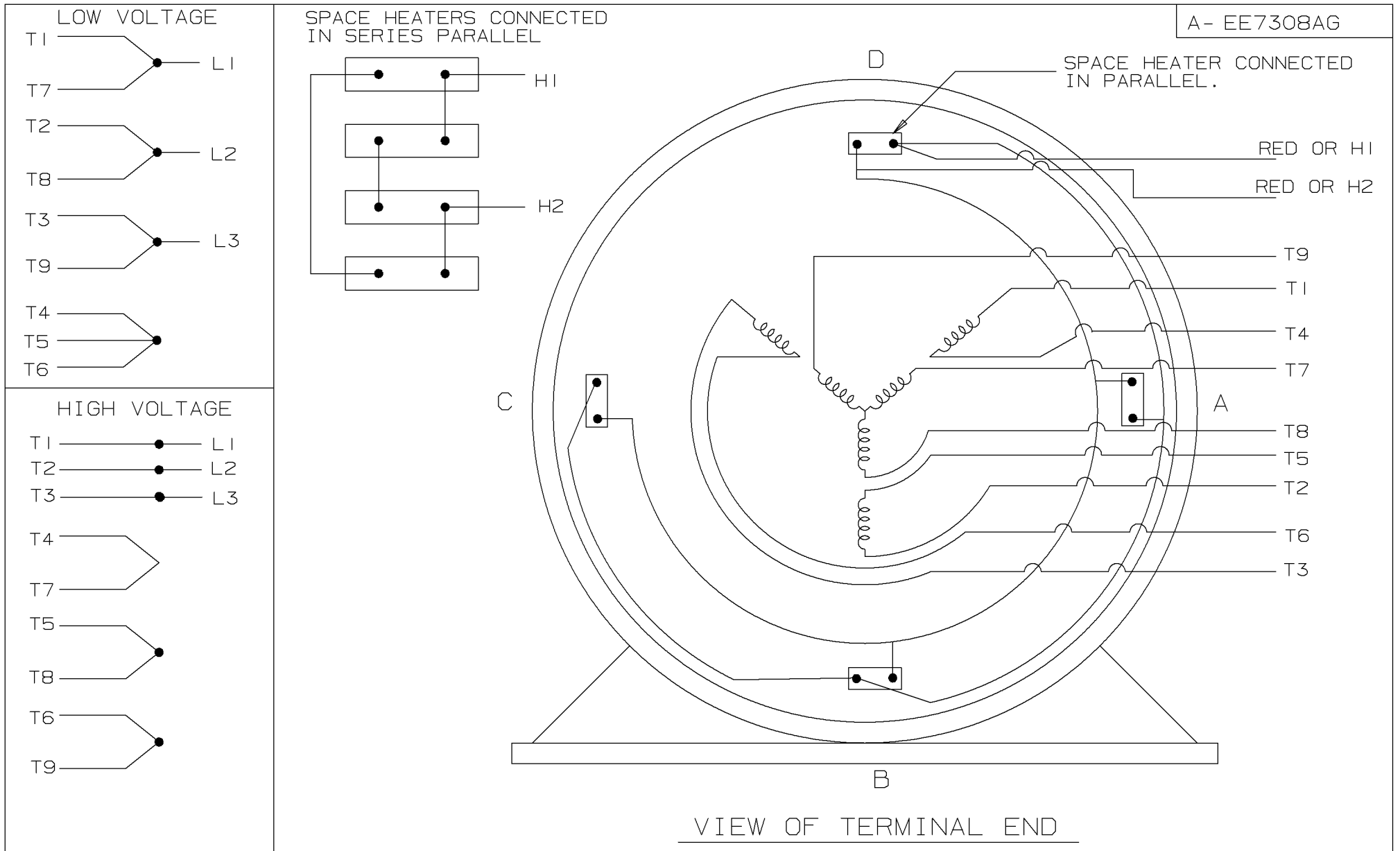
This is an uncontrolled document once printed or downloaded and is subject to change without notice. Date Created:09/07/2024




NOTES:

1. C.BOX CAN BE ROTATED IN 90° STEPS.
2. C.BOX CAN BE MOUNTED ON OPPOSITE SIDE BY REMOVING BRACKETS AND TURNING FRAME 180°.
3. NAMEPLATES TO BE READ FROM CONDUIT BOX SIDE OF MOTOR.

SIDE OF MOTOR.										TOLERANCES UNLESS SPECIFIED				DRAWN CAV 10-04-2001								
										DEC. INCHES				CHK ML 10-04-2001								
										.X ±.1				APPD DR 10-04-2001								
										.XX ±.03		TITLE OUTLINE - TEFC 250T FR. -BB -TS -STD.		SCALE 1=4								
										.XXX ±.005				REF								
DASH	FRAME	B	C	2F	BS		1	NEW DRAWING MU39048	CAV 10-04-2001			.XXXX ±.0005	MAT'L (SHEET METAL C'BOX)		FIM							
1175	254T	10.25	21.44	8.25	4.12		NO.	REVISION	BY & DATE	CHK	ANG	±7/30"	FINISH		PREV							
1350	256T	12.00	23.19	10.00	5.00		THIS DRAWING IN DESIGN AND DETAIL IS OUR PROPERTY AND MUST NOT BE USED EXCEPT IN CONNECTION WITH OUR WORK. ALL RIGHTS OF DESIGN AND INVENTION ARE RESERVED THIS IS AN ELECTRONICALLY GENERATED DOCUMENT - DO NOT SCALE THIS PRINT										RFP 10-04-2001	CAD FILE SS203699	SIZE B	DRAWING NO. SS203699	PAGE OF 1	REV. 1



				<div>✓</div> <div>MAX. SURFACE ROUGHNESS UNLESS NOTED OTHERWISE</div>	UNLESS OTHERWISE SPECIFIED DIMENSIONS ARE IN INCHES TOL. ON XX± .02 XXX± .005 XXXX± .0005 ANGLES± 7°30"				
				MATL SPEC			DRAWN BY PGK	09-18-1996	
				FINISH			CHKD BY ML	10-02-1996	
7	10-02-1996	REDRAWN ON CADD & REVISED TO HAVE LEADS FOR HEATER MARK H1 OR H2 CN 22969	PGK	REFERENCE DRW.	WAUSAU, WISCONSIN 54401		APPD BY GK	10-02-1996	
REV	DATE	CHANGE	NAME	PART NAME CONNECTION DIAGRAM THREE PHASE - 9 LEAD				DRWG NO A - EE7308AG	
		SHOP BOOK	PURCHASED	DISTRIBUTION - WA - LB - WP - LM - BR			CADD FILE NO.	EE7308AG	

8/26/2007 7:29:27 PM - SHOP BOOK

PURCHASED

DISTRIBUTION - WA - LB - WP - LM - BR

CADD FILE NO.

EE7308AG