

PRODUCT INFORMATION PACKET

Model No: 256TTTPA17103
Catalog No: 256TTTPA17103
3,900,TEVN,256TCZ,3/60/460-480 (OBSOLETE)

Regal and are trademarks of Regal Rexnord Corporation or one of its affiliated companies.
©2022 Regal Rexnord Corporation, All Rights Reserved. MC017097E



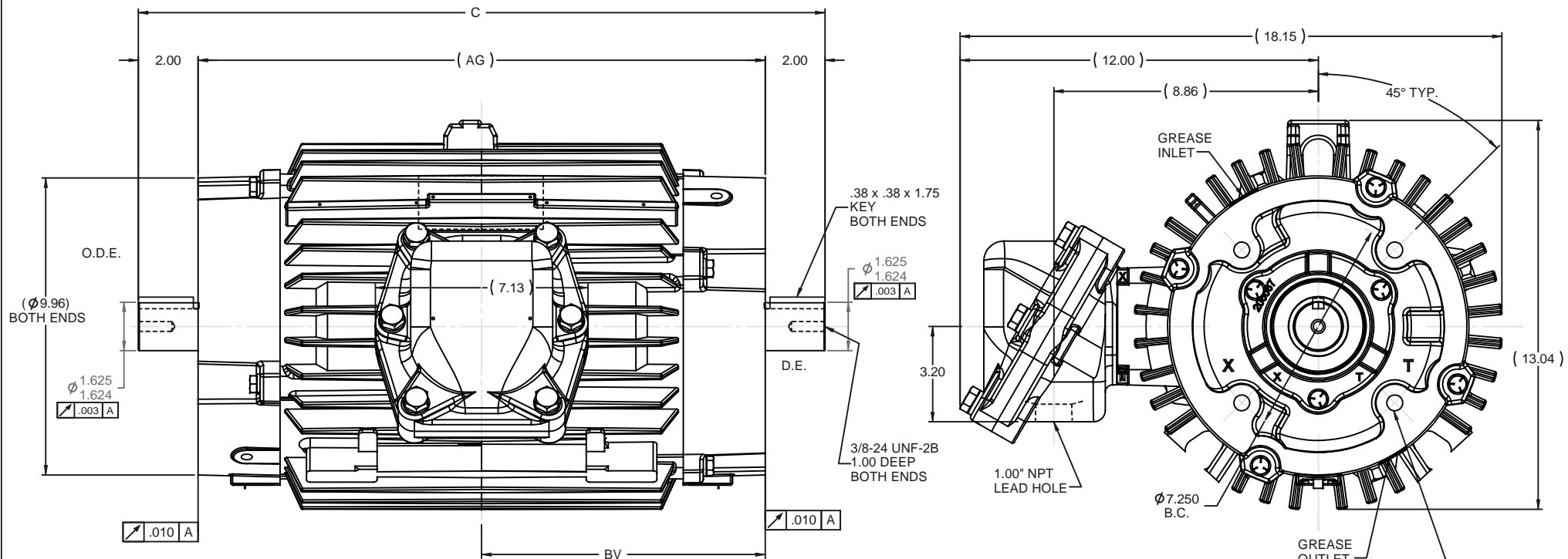
Nameplate Specifications

Output HP	3 Hp	Output KW	2.2 kW
Frequency	60 Hz	Voltage	460-480 V
Current	4.8-4.7 A	Speed	870 rpm
Service Factor	1	Phase	3
Efficiency	85.5 %	Power Factor	68
Duty	Continuous	Insulation Class	F
Design Code	B	KVA Code	J
Frame	256TCZ	Enclosure	Totally Enclosed Non Ventilated
Thermal Protection	No Protection	Ambient Temperature	40 °C
Drive End Bearing Size	211	Opp Drive End Bearing Size	211
UL	Recognized	CSA	Y
CE	Y	IP Code	54
Number of Speeds	1		

Technical Specifications

Electrical Type	Squirrel Cage Induction Run	Starting Method	Across The Line
Poles	8	Rotation	Reversible
Resistance Main	2.9 Ohms	Mounting	Round
Motor Orientation	Horizontal	Drive End Bearing	Ball (Max Type)
Opp Drive End Bearing	Ball (Max Type)	Frame Material	Cast Iron
Shaft Type	Special Extension Both Sides	Assembly/Box Mounting	F1/F2 CAPABLE
Connection Drawing	A-EE7300	Outline Drawing	B-SS208086-1350

This is an uncontrolled document once printed or downloaded and is subject to change without notice. Date Created:10/13/2022



- NOTES:
1. CONDUIT BOX CAN BE ROTATED IN 90° STEPS
 2. NAMEPLATE CAN BE READ FROM CONDUIT BOX SIDE OF MOTOR.
 3. BOX CAN MOUNTED ON OPPOSITE SIDE BY REMOVING BRACKETS AND TURNING FRAME 180°. THIS MODIFICATION CAN BE PERFORMED ONLY BY THE ORIGINAL EQUIPMENT MANUFACTURER, OR BY A FACILITY THAT IS COVERED UNDER UNDERWRITERS LABORATORIES INC. CATEGORY PTKQ. TITLED "MOTORS AND GENERATORS REBUILT FOR USE IN HAZARDOUS LOCATIONS."

1350	250	23.00	19.00	9.50
DASH	FRAME	C	AG	BV

				TOLERANCES UNLESS SPECIFIED	REGAL-BELOIT CORPORATION	DRAWN CTO 07-10-2007	
				DEC INCHES		CHK ML 07-13-2007	
				X ±.1		APPR SW 08-23-2007	
3	SHAFT THREAD WAS CALLED OUT AS 1/2-20 ECN 13798	MSG 05-11-2009	MSG xxx	±.03	TITLE OUTLINE - SHAKER DUTY 250 FR. - 211 BRG. - EPNV	SCALE 5:16	
2	C BOX LEAD HOLE WAS 3/4" 08-5345	MSG 01-29-2008	MSG xxx	±.005		REF	
1	C FACE RUNOUT .010 WAS .004 CN08-0182	TJW 2/7/2008	MSG xxx	±.0005		FMF	
NO	REVISION	BY & DATE	CHK ANG ±7'30"	FINISH	PAGE OF		
THIRD ANGLE PROJECTION				RFP	PREV	SIZE B	DRAWING NO SS208086
				NETWORK FILE NAME ss208086			REV 3

THREE PHASE - SINGLE VOLTAGE
MOTOR - CONDUIT BOX @ 'A'

TO REVERSE ROTATION:
INTERCHANGE ANY TWO LINE
LEAD CONNECTIONS

TERMINAL BLOCK WHEN SPECIFIED

IF MOTOR HAS 9 LEADS

T1(U1) T1(U1) T1(U1) → L1

T2(V1) T2(V1) T2(V1) → L2

T3(W1) T3(W1) T3(W1) → L3

IF MOTOR HAS 6 LEADS

T1(U1) T1(U1) → L1

T2(V1) T2(V1) → L2

T3(W1) T3(W1) → L3

A-9806 DECAL




OPTIONAL CORD CONNECTION	
L1	WHITE
L2	RED
L3	BLACK

DRAWING REVISION AC	REVISION BY BS	REV DATE/© DATE 26/07/2022
REQUEST NUMBER CR-0010402	APPROVED BY SN	DATE 26/07/2022
REQUEST NUMBER DESCRIPTION DRAWING UPDATED		
COPYRIGHT (PER REVISION DATE) REGAL BELOIT AMERICA, INC. ALL RIGHTS RESERVED. PROPRIETARY AND CONFIDENTIAL INFORMATION - THIS DOCUMENT IS THE PROPERTY OF REGAL BELOIT AMERICA, INC. ("OWNER") AND CONTAINS OWNER'S PROPRIETARY INFORMATION. ANY PERSON, CORPORATION OR OTHER FIRM RECEIVING IT IS DEEMED, BY RECEIVING IT, TO AGREE THAT IT, AND/OR ANY PART OF IT, SHALL NOT BE DISCLOSED TO ANY PERSON, CORPORATION OR OTHER ENTITY, DUPLICATED, AND/OR USED, EXCEPT AS EXPRESSLY APPROVED IN WRITING IN ADVANCE BY OWNER. THIS DOCUMENT SHALL BE RETURNED TO OWNER UPON REQUEST. IT MAY BE SUBJECT TO CERTAIN RESTRICTIONS UNDER APPLICABLE EXPORT CONTROL LAWS AND REGULATIONS.		

PRIMARY DIMENSIONS ARE INCH
mm DIMENSIONS IN [BRACKETS]
ARE FOR REFERENCE ONLY

DRAWN BY DA
DATE 03-26-1993
APPROVED BY TB
DATE 03-26-1993
REFERENCE
THIRD ANGLE PROJECTION

 Regal Beloit America, Inc.	
DESCRIPTION CONNECTION DIAGRAM EXTERNAL - SINGLE VOLTAGE - 3Ø MOTOR	
MATERIAL	PROCESS/FINISH
SIZE A	DRAWING NUMBER EE7300
SHEET 1 OF 1	