

PRODUCT INFORMATION PACKET

Model No: 256TTGN16507
Catalog No: 256TTGN16507
20,3600,EPFC,256T,3/60/230/460

Regal and are trademarks of Regal Rexnord Corporation or one of its affiliated companies.
©2022 Regal Rexnord Corporation, All Rights Reserved. MC017097E



Nameplate Specifications


Output HP	20 Hp	Output KW	14.9 kW
Frequency	60 Hz	Voltage	230/460 V
Current	47.0/23.4 A	Speed	3537 rpm
Service Factor	1.15	Phase	3
Efficiency	92.4 %	Power Factor	86
Duty	Continuous	Insulation Class	F
Design Code	B	KVA Code	G
Frame	256T	Enclosure	Explosion Proof Fan cooled
Thermal Protection	Thermostat	Ambient Temperature	40 °C
Drive End Bearing Size	309	Opp Drive End Bearing Size	210
UL	No	CSA	N
CE	N	IP Code	54
Hazardous Location	EXP PROOF CL I GR C&D CL II GR F&G T3B	Number of Speeds	1

Technical Specifications

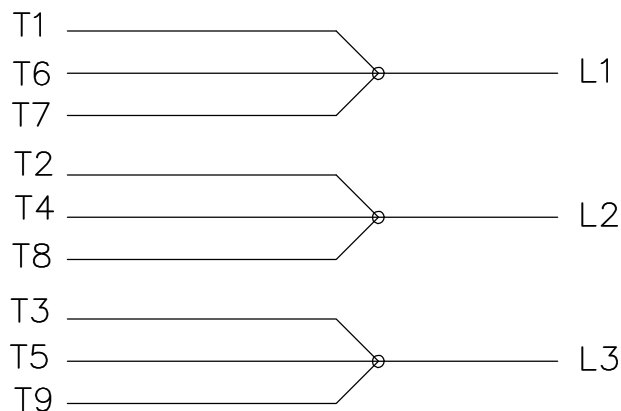
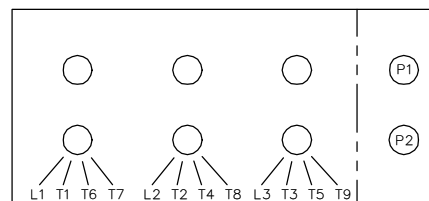
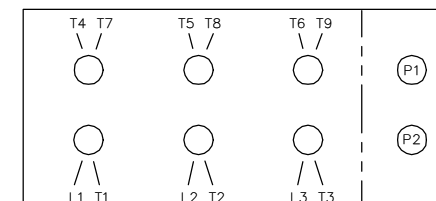
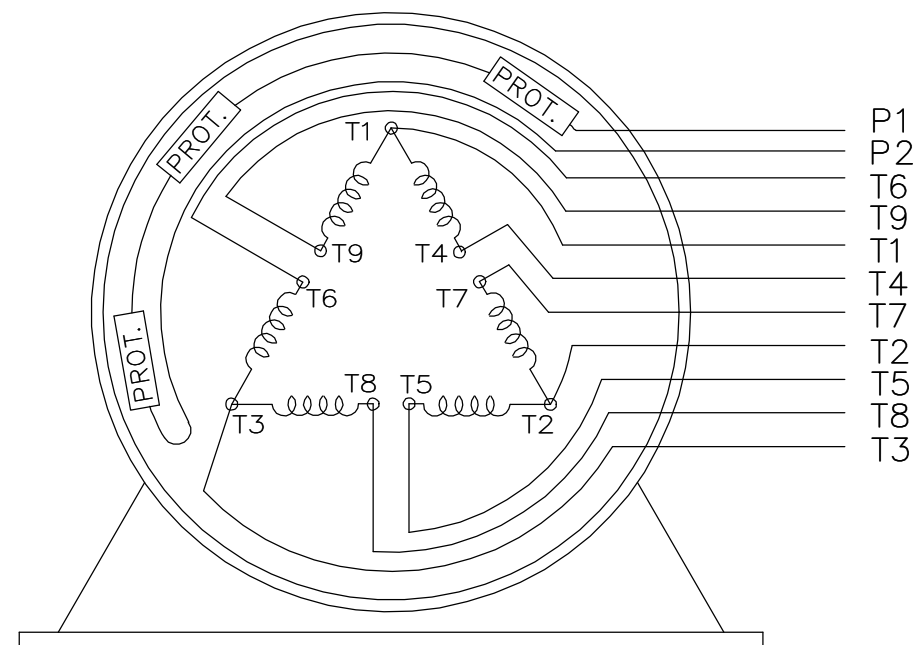
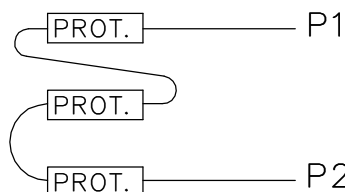
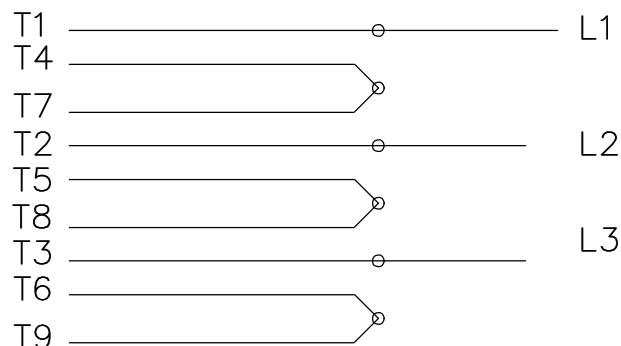
Electrical Type	Squirrel Cage Inverter Rated	Starting Method	Line Or Inverter
Poles	2	Rotation	Reversible
Resistance Main	.394 Ohms	Mounting	Rigid Base
Motor Orientation	Horizontal	Drive End Bearing	Ball
Opp Drive End Bearing	Ball	Frame Material	Cast Iron
Shaft Type	T	Assembly/Box Mounting	F1 ONLY
Inverter Load	CONSTANT 10:1		
Outline Drawing	B-SS203001-1225	Connection Drawing	A-EE7308AD

This is an uncontrolled document once printed or downloaded and is subject to change without notice. Date Created:10/13/2022


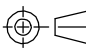


 Regal TM Beloit America, Inc.		
DESCRIPTION <div style="text-align: center;"> <h1>OUTLINE</h1> <p>250T FR. EXP. PR. - BB - T - STD.</p> </div>		
MATERIAL		PROCESS/FINISH
SIZE B	DRAWING NUMBER <div style="text-align: center;"> <h1>SS203001</h1> </div>	SHEET 1 OF 1

DASH	FRAME	B	C	2F	2FF	BS
1050	254T	10.25 [260.35]	23.65 [600.71]	---	8.25 [209.55]	4.12 [104.65]
1225	256T	12.00 [304.80]	25.40 [645.16]	---	10.00 [254.00]	5.00 [127.00]

LOW VOLTAGELOW VOLTAGEHIGH VOLTAGEHIGH VOLTAGEVIEW OF TERMINAL END

WHEN MORE THAN ONE PROT. IS USED; PROT. ARE CONNECTED IN SERIES

DRAWING REVISION L	REVISION BY JP	REV DATE/© DATE 06-21-2019	TOLERANCES (EXCEPT AS NOTED): DEC. .X ±0.1 [±3] ±7° 30" INCH .XX ±0.02 [±0.5] XXX ±0.005 [±0.13] XXXX ±0.0005 [±0.013] REMOVE BURRS & BREAK SHARP EDGES: .003/.015 [.08/.38] X 45 ° CORNER FILLETS: R.02 [.5] MACHINED SURFACES: 200/ 5.1 INCH ✓mm ✓ mm DIMENSIONS IN [BRACKETS] ARE FOR REFERENCE ONLY		DRAWN BY MJD	<div> Regal Beloit America, Inc.</div>		
ECO ECO-0168744	APPROVED BY MH	DATE 06-21-2019			DATE 12-19-1997			
ECO DESCRIPTION UPDATED TO CURRENT STANDARDS COPYRIGHT (PER REVISION DATE) REGAL BELOIT AMERICA, INC. ALL RIGHTS RESERVED. PROPRIETARY AND CONFIDENTIAL INFORMATION - THIS DOCUMENT IS THE PROPERTY OF REGAL BELOIT AMERICA, INC. ("OWNER") AND CONTAINS OWNER'S PROPRIETARY INFORMATION. ANY PERSON, CORPORATION OR OTHER FIRM RECEIVING IT IS DEEMED, BY RECEIVING IT, TO AGREE THAT IT, AND/OR ANY PART OF IT, SHALL NOT BE DISCLOSED TO ANY PERSON, CORPORATION OR OTHER ENTITY, DUPLICATED, AND/OR USED, EXCEPT AS EXPRESSLY APPROVED IN WRITING IN ADVANCE BY OWNER. THIS DOCUMENT SHALL BE RETURNED TO OWNER UPON REQUEST. IT MAY BE SUBJECT TO CERTAIN RESTRICTIONS UNDER APPLICABLE EXPORT CONTROL LAWS AND REGULATIONS.					APPROVED BY GK	DESCRIPTION CONN DIAGRAM-EXTERNAL		
					DATE 01-07-1998			
			REFERENCE	MATERIAL	PROCESS/FINISH			
			THIRD ANGLE PROJECTION 	SIZE A	DRAWING NUMBER EE7308AD		SHEET 1 OF 1	