

PRODUCT INFORMATION PACKET



Model No: 256TTGCD16004
Catalog No: C308C
20,3600,EPFC,256TC,3/60/230/460

Regal and Marathon are trademarks of Regal Rexnord Corporation or one of its affiliated companies.
©2023 Regal Rexnord Corporation, All Rights Reserved. MC017097E



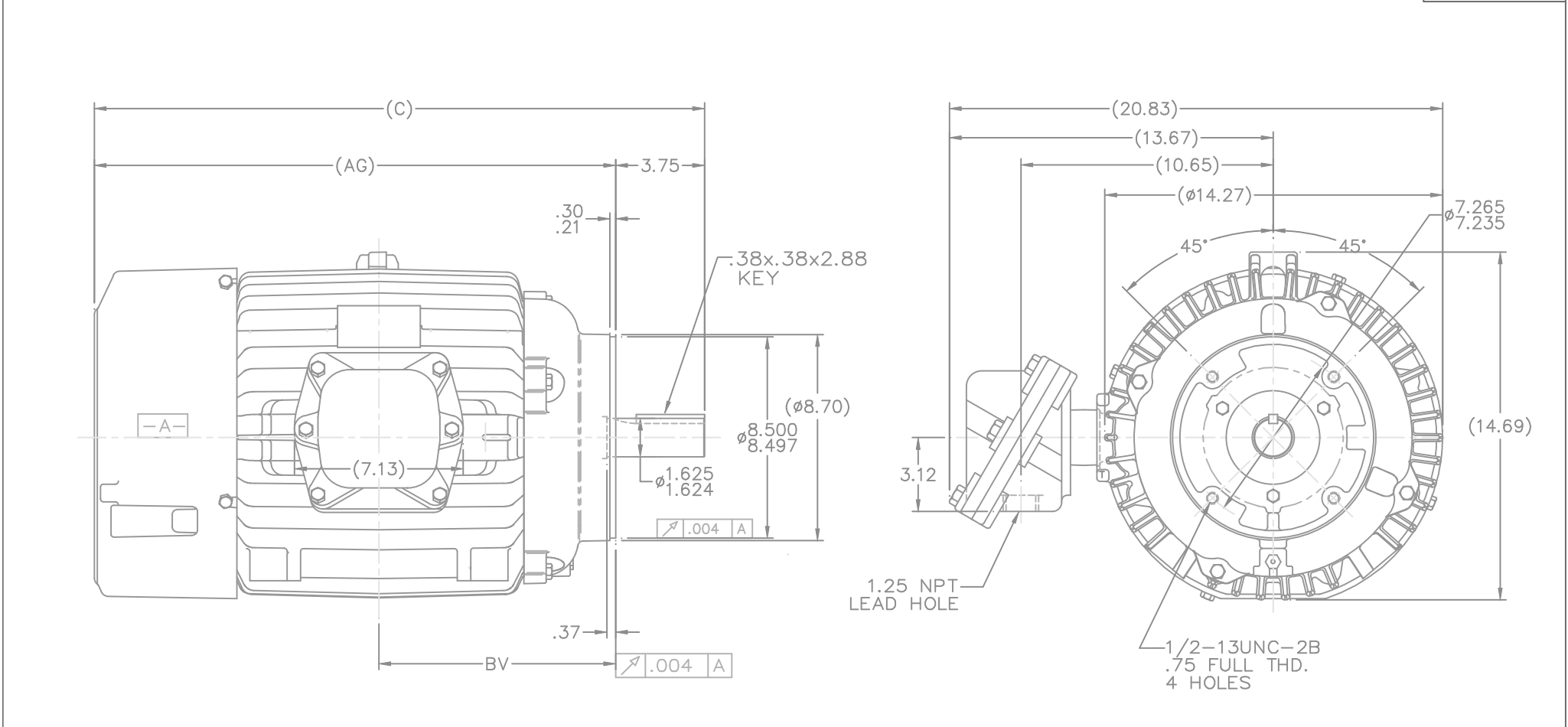
Nameplate Specifications

Output HP	20 Hp	Output KW	14.9 kW
Frequency	60 Hz	Voltage	230/460 V
Current	47.5/23.7 A	Speed	3540 rpm
Service Factor	1.15	Phase	3
Efficiency	91 %	Power Factor	87.5
Duty	Continuous	Insulation Class	F
Design Code	B	KVA Code	G
Frame	256TC	Enclosure	Explosion Proof Fan cooled
Thermal Protection	Thermostat	Ambient Temperature	40 °C
Drive End Bearing Size	6309	Opp Drive End Bearing Size	6210
UL	UL Listed And CSA Certified	CSA	Y
CE	N	IP Code	54
Hazardous Location	EXP PROOF CL I GR C&D CL II GR F&G T3B	Number of Speeds	1

Technical Specifications

Electrical Type	Squirrel Cage Inverter Rated	Starting Method	Line Or Inverter
Poles	2	Rotation	Reversible
Resistance Main	.546 Ohms	Mounting	Round
Motor Orientation	Horizontal	Drive End Bearing	Ball
Opp Drive End Bearing	Ball	Frame Material	Cast Iron
Shaft Type	T	Assembly/Box Mounting	F1 ONLY
Outline Drawing	SS207446-1225	Connection Drawing	EE7308AD


This is an uncontrolled document once printed or downloaded and is subject to change without notice. Date Created:01/19/2023

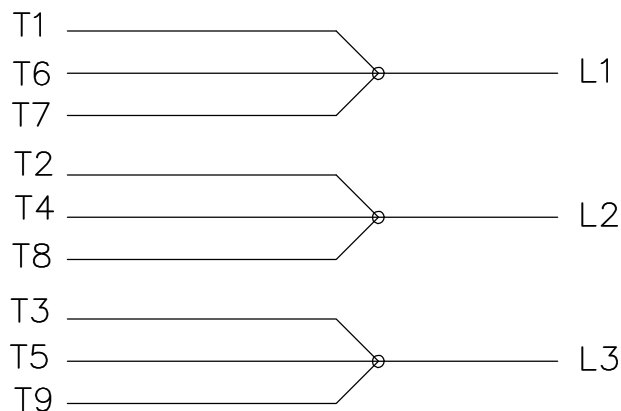
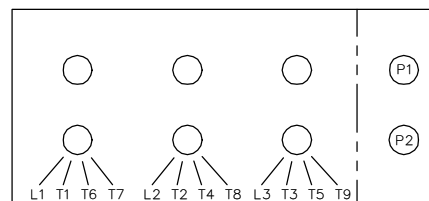
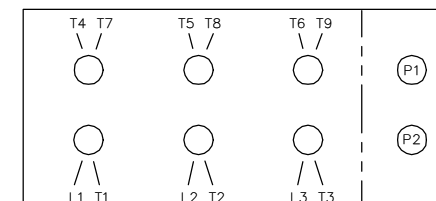
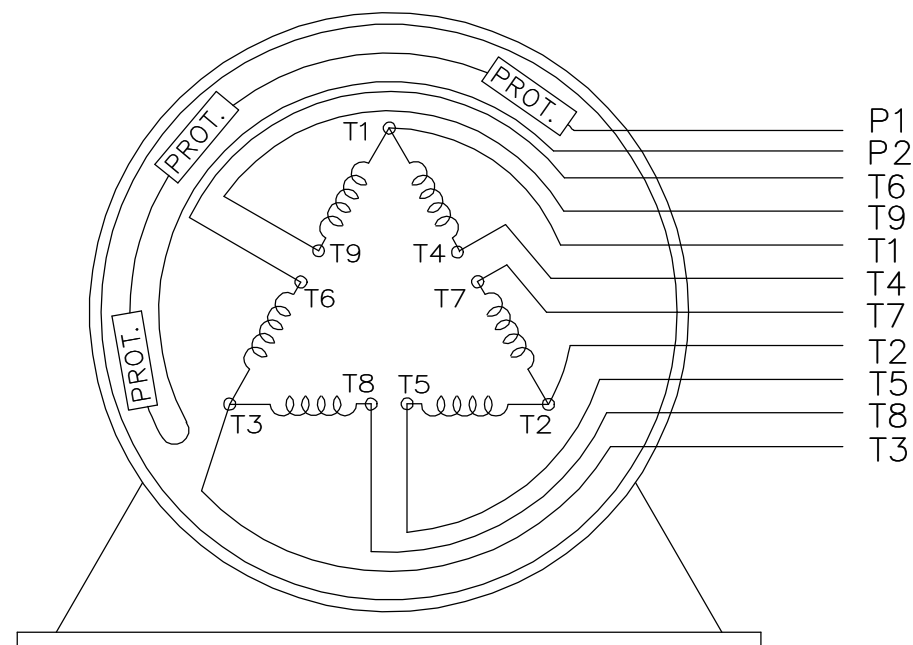
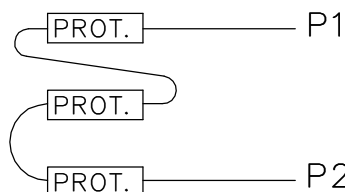
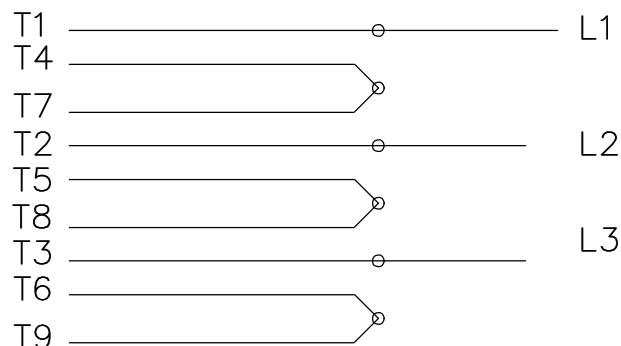


NOTES:


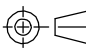
1. BOX CAN BE ROTATED CLOCKWISE UP TO 270° FROM ITS ORIGINAL POSITION.
2. NAMEPLATE TO BE READ FROM CONDUIT BOX SIDE OF MOTOR

DASH	FRAME	C	AG	BV	
1225	254-6TC	25.77	22.02	10.00	

				DEC.	INCHES		CHK	ML 02-06-1998		
				.X	±.1			APPD	TB 02-06-1998	
				.XX	±.03		TITLE OUTLINE	SCALE		1=4
2	REDRAWN IN AUTOCAD	RWR 09-27-2004		.XXX	±.005	254-6TC FR. -EXP. PR. - 'C' FACE	REF			
1	NEW DRAWING MU18309	MH 02-06-1998	ML	.XXX	±.0005	MATL	FMF			
NO.	REVISION	BY & DATE	CHK	ANG	±7'30"	FINISH	PREV			
THIS DRAWING IN DESIGN AND DETAIL IS OUR PROPERTY AND MUST NOT BE USED EXCEPT IN CONNECTION WITH OUR WORK. ALL RIGHTS OF DESIGN AND INVENTION ARE RESERVED. THIS IS AN ELECTRONICALLY GENERATED DOCUMENT - DO NOT SCALE THIS PRINT							SIZE	DRAWING NO.	PAGE 1 OF 1	REV.
							B	SS207446		2
							RF	02-06-1998		
							DIST	LB		
							CAD FILE	ss207446		

LOW VOLTAGELOW VOLTAGEHIGH VOLTAGEHIGH VOLTAGEVIEW OF TERMINAL END

WHEN MORE THAN ONE PROT. IS USED; PROT. ARE CONNECTED IN SERIES

DRAWING REVISION L	REVISION BY JP	REV DATE/© DATE 06-21-2019	TOLERANCES (EXCEPT AS NOTED): DEC. .X INCH ±0.1 mm [±3] ANGLE ±7° 30'				DRAWN BY MJD		<div> Regal Beloit America, Inc.</div>			
ECO ECO-0168744	APPROVED BY MH	DATE 06-21-2019	.XX ±0.02 [±0.5]	.XXX ±0.005 [±0.13]	.XXXX ±0.0005 [±0.013]	DATE 12-19-1997	APPROVED BY GK					
ECO DESCRIPTION UPDATED TO CURRENT STANDARDS			REMOVE BURRS & BREAK SHARP EDGES: .003/.015 [.08/.38] X 45° CORNER FILLETS: R.02 [.5] MACHINED SURFACES: 200/ INCH 5.1/ mm				DATE 01-07-1998		DESCRIPTION CONN DIAGRAM-EXTERNAL			
COPYRIGHT (PER REVISION DATE) REGAL BELOIT AMERICA, INC. ALL RIGHTS RESERVED. PROPRIETARY AND CONFIDENTIAL INFORMATION - THIS DOCUMENT IS THE PROPERTY OF REGAL BELOIT AMERICA, INC. ("OWNER") AND CONTAINS OWNER'S PROPRIETARY INFORMATION. ANY PERSON, CORPORATION OR OTHER FIRM RECEIVING IT IS DEEMED, BY RECEIVING IT, TO AGREE THAT IT, AND/OR ANY PART OF IT, SHALL NOT BE DISCLOSED TO ANY PERSON, CORPORATION OR OTHER ENTITY, DUPLICATED, AND/OR USED, EXCEPT AS EXPRESSLY APPROVED IN WRITING IN ADVANCE BY OWNER. THIS DOCUMENT SHALL BE RETURNED TO OWNER UPON REQUEST. IT MAY BE SUBJECT TO CERTAIN RESTRICTIONS UNDER APPLICABLE EXPORT CONTROL LAWS AND REGULATIONS.			mm DIMENSIONS IN [BRACKETS] ARE FOR REFERENCE ONLY				REFERENCE		MATERIAL		PROCESS/FINISH	
							THIRD ANGLE PROJECTION 		SIZE A	DRAWING NUMBER EE7308AD		SHEET 1 OF 1