

PRODUCT INFORMATION PACKET



Model No: 256TTFNA6564
Catalog No: 256TTFNA6564
20,1800,TEFC,256TCZ,3/60/460

Regal and Marathon are trademarks of Regal Rexnord Corporation or one of its affiliated companies.
©2024 Regal Rexnord Corporation, All Rights Reserved. MC017097E



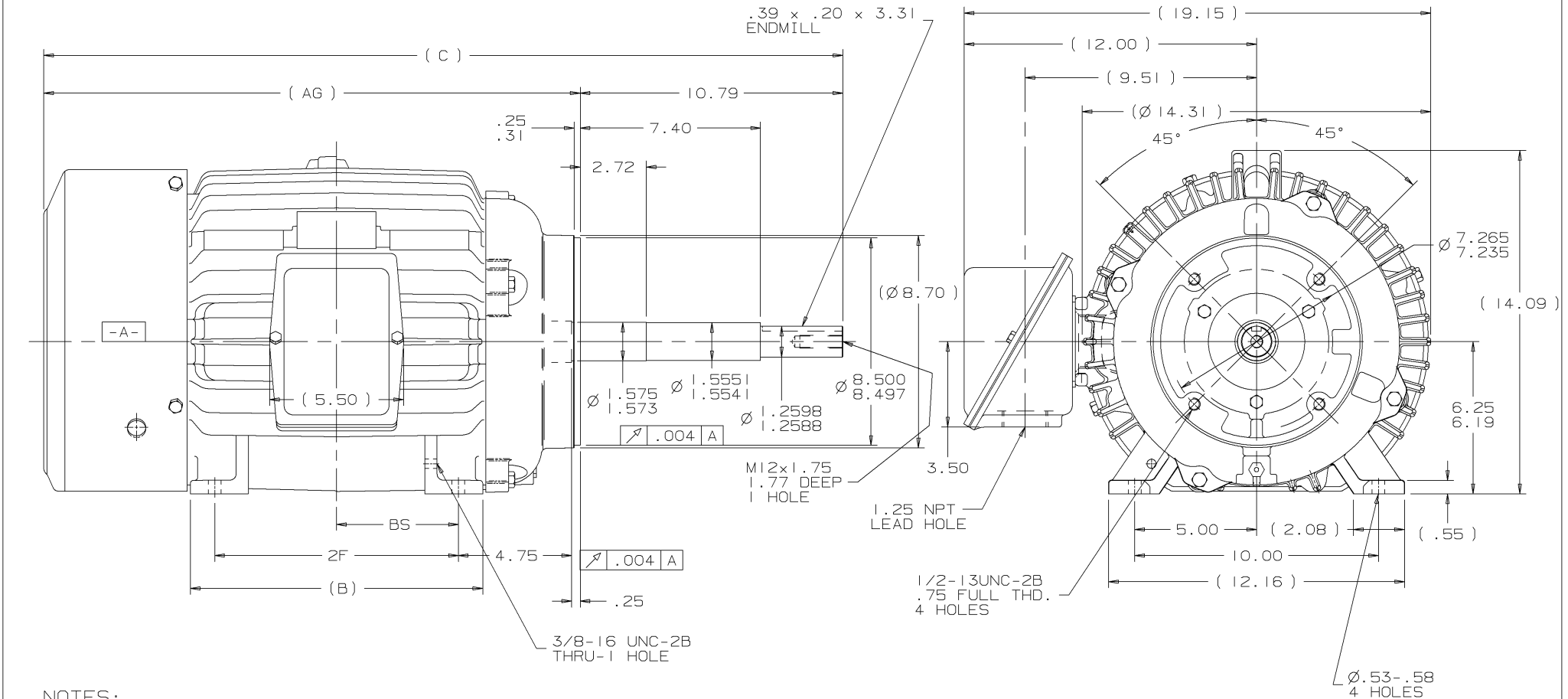
Nameplate Specifications

Phase	3	Output HP	20 Hp
Output KW	14.9 kW	Voltage	460 V
Speed	1775 rpm	Service Factor	1.15
Frame	256TCZ	Enclosure	Totally Enclosed Fan Cooled
Thermal Protection	No Protection	Efficiency	93 %
Ambient Temperature	40 °C	Frequency	60 Hz
Current	24.1 A	Power Factor	84
Duty	Continuous	Insulation Class	F
Design Code	B	KVA Code	G
Drive End Bearing Size	309	Opp Drive End Bearing Size	210
UL	Recognized	CSA	Y
IP Code	54	Number of Speeds	1

Technical Specifications

Electrical Type	Squirrel Cage Induction Run	Starting Method	Across The Line
Poles	4	Rotation	Reversible
Resistance Main	.474 Ohms	Mounting	Rigid Base
Motor Orientation	Horizontal	Drive End Bearing	Ball
Opp Drive End Bearing	Ball	Frame Material	Cast Iron
Shaft Type	Single Special Extension	Assembly/Box Mounting	F1/F2 CAPABLE
Outline Drawing	B-SS203664-1225	Connection Drawing	A-EE7300

This is an uncontrolled document once printed or downloaded and is subject to change without notice. Date Created:09/07/2024






NOTES:

1. BOX CAN BE ROTATED IN 90° STEPS.
2. NAMEPLATE TO BE READ FROM CONDUIT BOX SIDE OF MOTOR.

- NOTES
1. BOX CAN BE ROTATED IN 90° STEPS.
 2. NAMEPLATE TO BE READ FROM CONDUIT BOX SIDE OF MOTOR.

DASH	FRAME	B	C	AG	2F	BS
1050	254TC	10.25	31.06	20.26	8.25	4.12
1225	256TC	12.00	32.81	22.01	10.00	5.00

<table><tr><td>DASH</td><td>FRAME</td><td>B</td><td>C</td><td>AG</td><td>2F</td><td>BS</td></tr><tr><td>1050</td><td>254TC</td><td>10.25</td><td>31.06</td><td>20.26</td><td>8.25</td><td>4.12</td></tr><tr><td>1225</td><td>256TC</td><td>12.00</td><td>32.81</td><td>22.01</td><td>10.00</td><td>5.00</td></tr><tr><td></td><td></td><td></td><td></td><td></td><td></td><td></td></tr><tr><td></td><td></td><td></td><td></td><td></td><td></td><td></td></tr></table>							DASH	FRAME	B	C	AG	2F	BS	1050	254TC	10.25	31.06	20.26	8.25	4.12	1225	256TC	12.00	32.81	22.01	10.00	5.00															<table><tr><td rowspan="4">2</td><td rowspan="4">07-06-2001</td><td rowspan="2">REVISED INTERNAL THREADS</td><td rowspan="2">CN 31221</td><td rowspan="2">TJB</td><td>✓ MAX. SURFACE ROUGHNESS UNLESS NOTED OTHERWISE</td><td colspan="3">UNLESS OTHERWISE SPECIFIED DIMENSIONS ARE IN INCHES TOL. ON XX± .03 XXX± .005 XXXX± .0005 ANGLES± 7°30"</td></tr><tr><td>MATL SPEC</td><td>DRAWN BY DRS</td><td>06-07-2001</td></tr><tr><td rowspan="2">1</td><td rowspan="2">06-13-2001</td><td rowspan="2">NEW DRAWING</td><td rowspan="2">MU37526</td><td rowspan="2">DRS</td><td>FINISH</td><td colspan="3"> WALSAU, WISCONSIN 54401</td></tr><tr><td>PART NAME OUTLINE - TEFC - CAST C'BOX 254-6TC FR. - BB - TS - C'FACE - TFNA</td><td>DRWG NO B- SS203664</td><td></td></tr><tr><td>REV</td><td>DATE</td><td colspan="3">CHANGE</td><td>NAME</td><td colspan="4"></td></tr></table>							2	07-06-2001	REVISED INTERNAL THREADS	CN 31221	TJB	✓ MAX. SURFACE ROUGHNESS UNLESS NOTED OTHERWISE	UNLESS OTHERWISE SPECIFIED DIMENSIONS ARE IN INCHES TOL. ON XX± .03 XXX± .005 XXXX± .0005 ANGLES± 7°30"			MATL SPEC	DRAWN BY DRS	06-07-2001	1	06-13-2001	NEW DRAWING	MU37526	DRS	FINISH	 WALSAU, WISCONSIN 54401			PART NAME OUTLINE - TEFC - CAST C'BOX 254-6TC FR. - BB - TS - C'FACE - TFNA	DRWG NO B- SS203664		REV	DATE	CHANGE			NAME					<table><tr><td></td><td></td><td colspan="2">SHOP BOOK</td><td colspan="2">PURCHASED</td><td colspan="2">DISTRIBUTION - WA - LB - WP - LM - BR</td><td colspan="2">CADD FILE NO.</td><td>SS203664</td></tr></table>									SHOP BOOK		PURCHASED		DISTRIBUTION - WA - LB - WP - LM - BR		CADD FILE NO.		SS203664
DASH	FRAME	B	C	AG	2F	BS																																																																																														
1050	254TC	10.25	31.06	20.26	8.25	4.12																																																																																														
1225	256TC	12.00	32.81	22.01	10.00	5.00																																																																																														
2	07-06-2001	REVISED INTERNAL THREADS	CN 31221	TJB	✓ MAX. SURFACE ROUGHNESS UNLESS NOTED OTHERWISE	UNLESS OTHERWISE SPECIFIED DIMENSIONS ARE IN INCHES TOL. ON XX± .03 XXX± .005 XXXX± .0005 ANGLES± 7°30"																																																																																														
					MATL SPEC	DRAWN BY DRS	06-07-2001																																																																																													
		1	06-13-2001	NEW DRAWING	MU37526	DRS	FINISH	 WALSAU, WISCONSIN 54401																																																																																												
							PART NAME OUTLINE - TEFC - CAST C'BOX 254-6TC FR. - BB - TS - C'FACE - TFNA	DRWG NO B- SS203664																																																																																												
REV	DATE	CHANGE			NAME																																																																																															
		SHOP BOOK		PURCHASED		DISTRIBUTION - WA - LB - WP - LM - BR		CADD FILE NO.		SS203664																																																																																										

ERROR: undefined
OFFENDING COMMAND: Pscript_WinNT_I
STACK:

THREE PHASE - SINGLE VOLTAGE
MOTOR - CONDUIT BOX @ 'A'

TO REVERSE ROTATION:
INTERCHANGE ANY TWO LINE
LEAD CONNECTIONS

TERMINAL BLOCK WHEN SPECIFIED

IF MOTOR HAS 9 LEADS

T1(U1) T1(U1) T1(U1) → L1

T2(V1) T2(V1) T2(V1) → L2

T3(W1) T3(W1) T3(W1) → L3

IF MOTOR HAS 6 LEADS

T1(U1) T1(U1) → L1

T2(V1) T2(V1) → L2


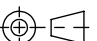
T3(W1) T3(W1) → L3

A-9806 DECAL



VIEW OF TERMINAL END

OPTIONAL CORD CONNECTION	
L1	WHITE
L2	RED
L3	BLACK

DRAWING REVISION AC		REVISION BY BS		REV DATE/© DATE 26/07/2022		DRAWN BY DA		<div>Regal Beloit America, Inc.</div>	
REQUEST NUMBER CR-0010402		APPROVED BY SN		DATE 26/07/2022		DATE 03-26-1993			
REQUEST NUMBER DESCRIPTION DRAWING UPDATED						PRIMARY DIMENSIONS ARE INCH mm DIMENSIONS IN [BRACKETS] ARE FOR REFERENCE ONLY			
COPYRIGHT (PER REVISION DATE) REGAL BELOIT AMERICA, INC. ALL RIGHTS RESERVED. PROPRIETARY AND CONFIDENTIAL INFORMATION - THIS DOCUMENT IS THE PROPERTY OF REGAL BELOIT AMERICA, INC. ("OWNER") AND CONTAINS OWNER'S PROPRIETARY INFORMATION. ANY PERSON, CORPORATION OR OTHER FIRM RECEIVING IT IS DEEMED, BY RECEIVING IT, TO AGREE THAT IT, AND/OR ANY PART OF IT, SHALL NOT BE DISCLOSED TO ANY PERSON, CORPORATION OR OTHER ENTITY, DUPLICATED, AND/OR USED, EXCEPT AS EXPRESSLY APPROVED IN WRITING IN ADVANCE BY OWNER. THIS DOCUMENT SHALL BE RETURNED TO OWNER UPON REQUEST. IT MAY BE SUBJECT TO CERTAIN RESTRICTIONS UNDER APPLICABLE EXPORT CONTROL LAWS AND REGULATIONS.									
						APPROVED BY TB		DESCRIPTION	
						DATE 03-26-1993		CONNECTION DIAGRAM EXTERNAL - SINGLE VOLTAGE - 3Ø MOTOR	
						REFERENCE		MATERIAL	
						THIRD ANGLE PROJECTION		PROCESS/FINISH	
								SIZE A	
								DRAWING NUMBER EE7300	
								SHEET 1 OF 1	