

PRODUCT INFORMATION PACKET



Model No: 256TTFNA6057
Catalog No: 256TTFNA6057
20,1800,TEFC,256TV,3/60/230/460

Regal and Marathon are trademarks of Regal Rexnord Corporation or one of its affiliated companies.
©2024 Regal Rexnord Corporation, All Rights Reserved. MC017097E



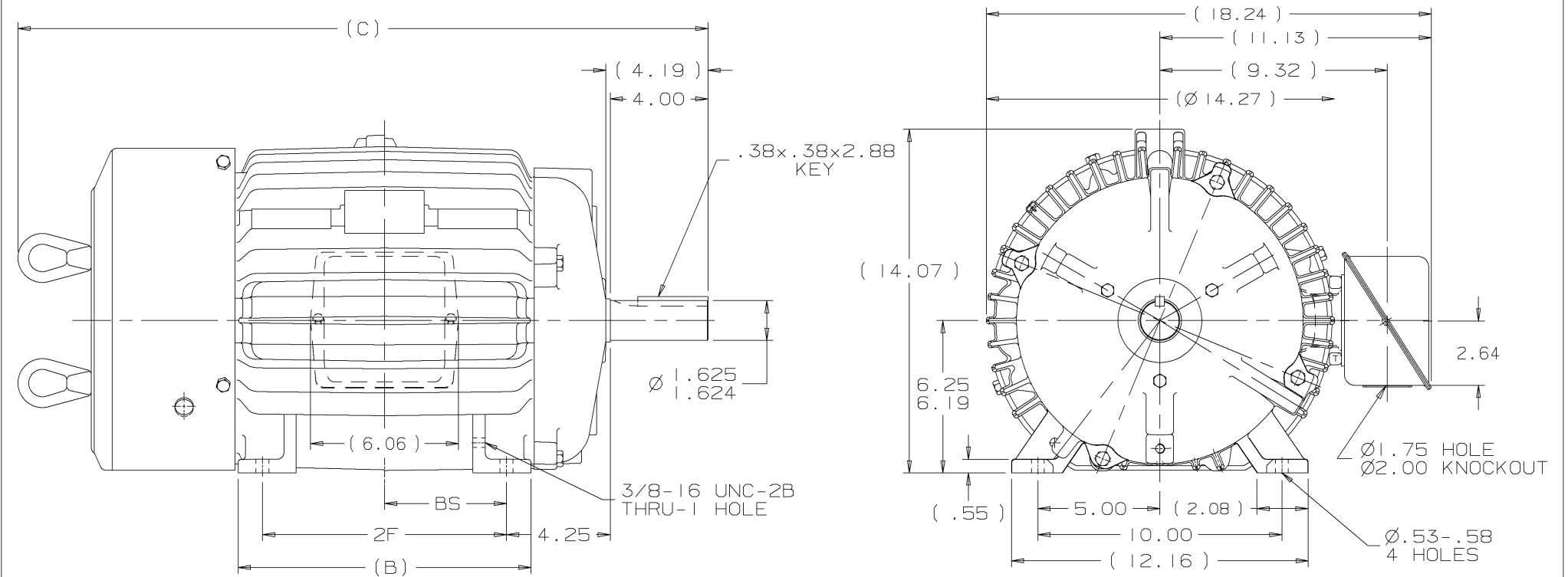
Nameplate Specifications

Phase	3	Output HP	20 Hp
Output KW	14.9 kW	Voltage	230/460 V
Speed	1775 rpm	Service Factor	1.15
Frame	256TV	Enclosure	Totally Enclosed Fan Cooled
Thermal Protection	Thermostat	Efficiency	93 %
Ambient Temperature	40 °C	Frequency	60 Hz
Current	48.0/24.1 A	Power Factor	84
Duty	Continuous	Insulation Class	F
Design Code	B	KVA Code	G
Drive End Bearing Size	309	Opp Drive End Bearing Size	210
UL	No	CSA	Y
IP Code	43	Number of Speeds	1


Technical Specifications

Electrical Type	Squirrel Cage Induction Run	Starting Method	Across The Line
Poles	4	Rotation	Reversible
Resistance Main	.474 Ohms	Mounting	Rigid Base
Motor Orientation	Shaft Down	Drive End Bearing	Ball
Opp Drive End Bearing	Ball	Frame Material	Cast Iron
Shaft Type	T	Assembly/Box Mounting	W7
Outline Drawing	B-SS203670-1225	Connection Drawing	A-EE7308T

This is an uncontrolled document once printed or downloaded and is subject to change without notice. Date Created:09/07/2024



NOTES:
1. BOX CAN BE ROTATED ON ITS AXIS.
2. NAMEPLATE TO BE READ FROM CONDUIT BOX
SIDE OF MOTOR

DASH	FRAME	B	C	2F	BS					✓ MAX. SURFACE ROUGHNESS UNLESS NOTED OTHERWISE		UNLESS OTHERWISE SPECIFIED DIMENSIONS ARE IN INCHES TOL. ON XX± .03 XX± .005 XXX± .0005 ANGLES± 7°30"				
1050	254T	10.25	26.52	8.25	4.12	2	07-10-2001	PART NAME REVISED	MU37794	HLB	MATL SPEC	SHEET METAL CONDUIT BOX		DRAWN BY DAH	06-20-2001	
1225	256T	12.00	28.27	10.00	5.00						FINISH			CHKD BY ML	06-21-2001	
						1	06-22-2001	NEW DRAWING	MU37794	DAH		WAUSAU, WISCONSIN 54401		APPD BY BW	06-22-2001	
						REV	DATE	CHANGE		NAME	PART NAME OUTLINE - TEFC 250TV FRAME - BB			DRWG NO B- SS203670		
								SHOP BOOK		PURCHASED		DISTRIBUTION - WA - LB - WP - LM - BR		CADD FILE NO.		SS203670

HIGH VOLTAGE



NOTE FOR FACTORY USE ONLY:
TO SURGE TEST FOR COMMON CONNECT:
HIGH VOLT: CONNECT P1 TO T1
THEN P2 TO L1
LOW VOLT: CONNECT P1 TO T1 & T7,
THEN P2 TO L1

LOW VOLTAGE

THREE PHASE
DUAL VOLTAGE MOTOR

VIEW OF TERMINAL END

NOTE: LEAD'S COLOR CAN BE YELLOW OR WHITE FOR MT2 PLANT

DRAWING REVISION T	REVISION BY ZR	DATE 01-14-2019
ECO ECO-0159915	APPROVED BY DR	DATE 01-15-2019

ECO DESCRIPTION
ADDED TERMINAL CONNECTION DIAGRAM

COPYRIGHT REGAL BELOIT AMERICA, INC. ALL RIGHTS RESERVED.
PROPRIETARY AND CONFIDENTIAL INFORMATION - THIS DOCUMENT IS THE PROPERTY OF
REGAL BELOIT AMERICA, INC. ("OWNER") AND CONTAINS OWNER'S PROPRIETARY
INFORMATION. ANY PERSON, CORPORATION OR OTHER FIRM RECEIVING IT IS DEEMED,
BY RECEIVING IT, TO AGREE THAT IT, AND/OR ANY PART OF IT, SHALL NOT BE DISCLOSED
TO ANY PERSON, CORPORATION OR OTHER ENTITY, DUPLICATED, AND/OR USED, EXCEPT
AS EXPRESSLY APPROVED IN WRITING IN ADVANCE BY OWNER. THIS DOCUMENT SHALL
BE RETURNED TO OWNER UPON REQUEST. IT MAY BE SUBJECT TO CERTAIN
RESTRICTIONS UNDER APPLICABLE EXPORT CONTROL LAWS AND REGULATIONS.

DRAWN BY SMC	DATE 05-13-1992
APPROVED BY TB	DATE 05-13-1992
REFERENCE EE7308/EE7300	THIRD ANGLE PROJECTION

REGAL™ Regal Beloit America, Inc.

DESCRIPTION
CONN DIAGRAM-INTERNAL
3 PHASE - DUAL VOLTAGE MOTOR

MATERIAL	PROCESS/FINISH
SIZE A	DRAWING NUMBER EE7308T
	SHEET 1 OF 1