

PRODUCT INFORMATION PACKET

marathon®
Motors

Model No: 256TTFNA6054
Catalog No: 256TTFNA6054
20,1800,TEFC,256TC,3/60/230/460

Regal and Marathon are trademarks of Regal Rexnord Corporation or one of its affiliated companies.
©2024 Regal Rexnord Corporation, All Rights Reserved. MC017097E

The logo for Regal Rexnord, featuring a stylized green and blue icon followed by the text "RegalRexnord" in a bold, sans-serif font.

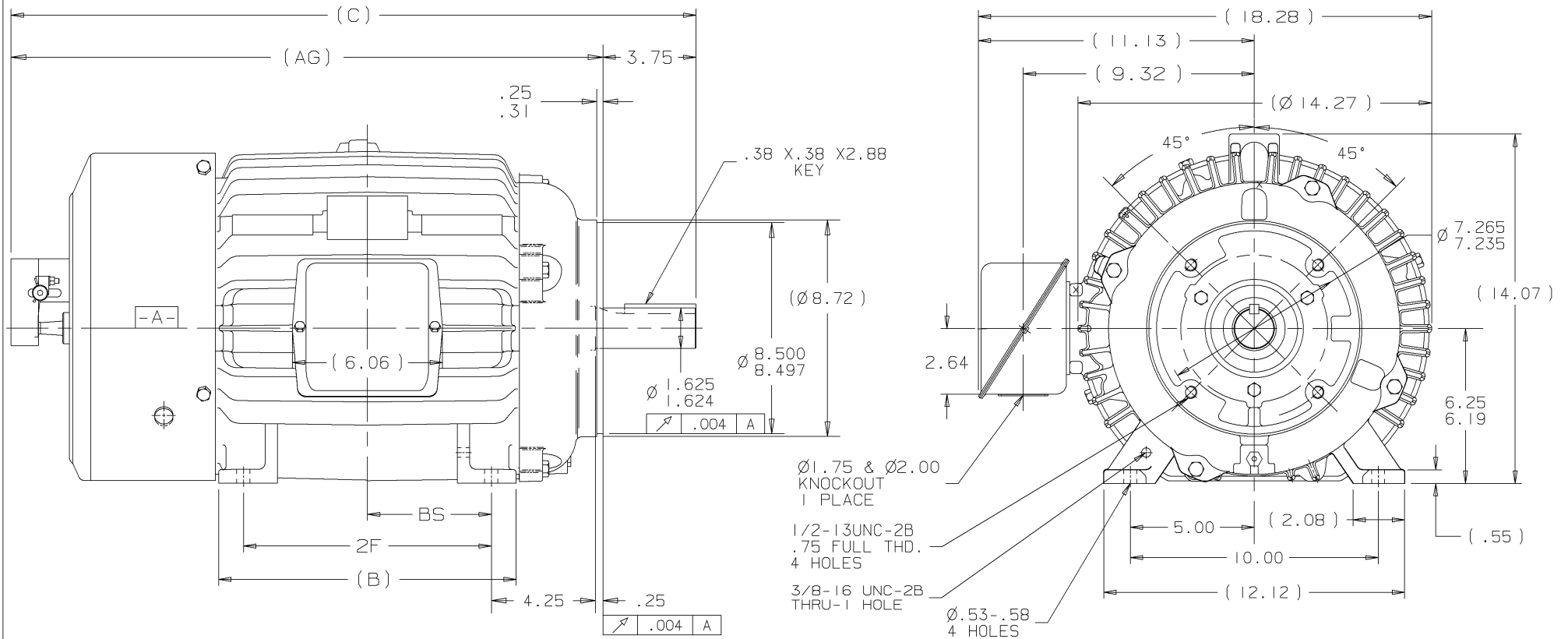
Nameplate Specifications

Phase	3	Output HP	20 Hp
Output KW	14.9 kW	Voltage	230/460 V
Speed	1775 rpm	Service Factor	1.15
Frame	256	Enclosure	Totally Enclosed Fan Cooled
Thermal Protection	Thermostat	Efficiency	93 %
Ambient Temperature	40 °C	Frequency	60 Hz
Current	48.0/24.1 A	Power Factor	84
Duty	Continuous	Insulation Class	F
Design Code	B	KVA Code	G
Drive End Bearing Size	309	Opp Drive End Bearing Size	210
UL	Recognized	CSA	Y
IP Code	43	Number of Speeds	1

Technical Specifications

Electrical Type	Squirrel Cage Induction Run	Starting Method	Across The Line
Poles	4	Rotation	Reversible
Resistance Main	.474 Ohms	Mounting	Rigid Base
Motor Orientation	Horizontal	Drive End Bearing	Ball
Opp Drive End Bearing	Ball	Frame Material	Cast Iron
Shaft Type	T	Assembly/Box Mounting	F1/F2 CAPABLE
Outline Drawing	B-SS203644-1225	Connection Drawing	A-EE7308T


This is an uncontrolled document once printed or downloaded and is subject to change without notice. Date Created:09/07/2024



NOTES:

1. BOX CAN BE ROTATED ON ITS AXIS.
2. BOX CAN BE MOUNTED ON OPPOSITE SIDE BY REMOVING BRACKETS AND TURNING FRAME 180°
3. NAMEPLATE TO BE READ FROM CONDUIT BOX SIDE OF MOTOR

DASH	FRAME	B	C	2F	BS	AG
1050	254TC	10.25	25.88	8.25	4.12	22.13
1225	254TC	12.00	27.63	10.00	5.00	23.88

					✓ MAX. SURFACE ROUGHNESS UNLESS NOTED OTHERWISE	UNLESS OTHERWISE SPECIFIED DIMENSIONS ARE IN INCHES TOL. ON XX±.03 XXX±.005 XXXX±.0005 ANGLES± 7°30"		
2	04-16-2001	CHANGED REAR BRACKET	MU3656B	DAH	MATL SPEC	 WAUSAU, WISCONSIN 54401	DRAWN BY DAH	04-10-2001
					FINISH		CHKD BY ML	04-12-2001
1	04-12-2001	NEW DRAWING	MU3656B	DAH	PART NAME OUTLINE - TEFC 250TC FRAME - BB - TS - TEFC		APPO BY CAV	04-12-2001
REV	DATE	CHANGE			NAME	DRWG NO B-SS203644		
		SHOP BOOK	PURCHASED	DISTRIBUTION - WA - LB - WP - LM - BR		CADD FILE NO.	SS203644	

HIGH VOLTAGE



NOTE FOR FACTORY USE ONLY:
TO SURGE TEST FOR COMMON CONNECT:
HIGH VOLT: CONNECT P1 TO T1
THEN P2 TO L1
LOW VOLT: CONNECT P1 TO T1 & T7,
THEN P2 TO L1

LOW VOLTAGE

THREE PHASE
DUAL VOLTAGE MOTOR

VIEW OF TERMINAL END

NOTE: LEAD'S COLOR CAN BE YELLOW OR WHITE FOR MT2 PLANT

DRAWING REVISION T	REVISION BY ZR	DATE 01-14-2019
ECO ECO-0159915	APPROVED BY DR	DATE 01-15-2019

ADDED TERMINAL CONNECTION DIAGRAM

COPYRIGHT REGAL BELOIT AMERICA, INC. ALL RIGHTS RESERVED.
PROPRIETARY AND CONFIDENTIAL INFORMATION - THIS DOCUMENT IS THE PROPERTY OF
REGAL BELOIT AMERICA, INC. ("OWNER") AND CONTAINS OWNER'S PROPRIETARY
INFORMATION. ANY PERSON, CORPORATION OR OTHER FIRM RECEIVING IT IS DEEMED,
BY RECEIVING IT, TO AGREE THAT IT, AND/OR ANY PART OF IT, SHALL NOT BE DISCLOSED
TO ANY PERSON, CORPORATION OR OTHER ENTITY, DUPLICATED, AND/OR USED, EXCEPT
AS EXPRESSLY APPROVED IN WRITING IN ADVANCE BY OWNER. THIS DOCUMENT SHALL
BE RETURNED TO OWNER UPON REQUEST. IT MAY BE SUBJECT TO CERTAIN
RESTRICTIONS UNDER APPLICABLE EXPORT CONTROL LAWS AND REGULATIONS.

DRAWN BY SMC	DATE 05-13-1992
APPROVED BY TB	DATE 05-13-1992
REFERENCE EE7308/EE7300	THIRD ANGLE PROJECTION

REGAL™ Regal Beloit America, Inc.

CONN DIAGRAM-INTERNAL

3 PHASE - DUAL VOLTAGE MOTOR

MATERIAL	PROCESS/FINISH
SIZE A	DRAWING NUMBER EE7308T
SHEET 1 OF 1	