

PRODUCT INFORMATION PACKET



Model No: 256TTFNA14515
Catalog No: 256TTFNA14515
20,3000,TEFC,256T,3/50/415

Regal and Marathon are trademarks of Regal Rexnord Corporation or one of its affiliated companies.
©2023 Regal Rexnord Corporation, All Rights Reserved. MC017097E



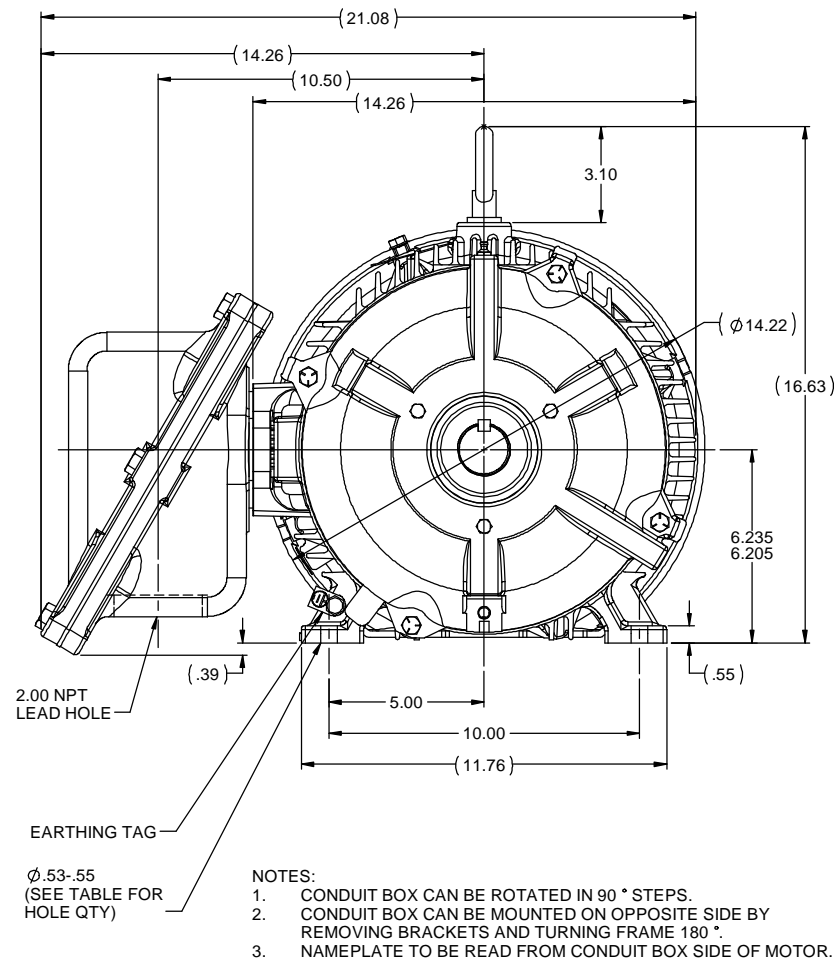
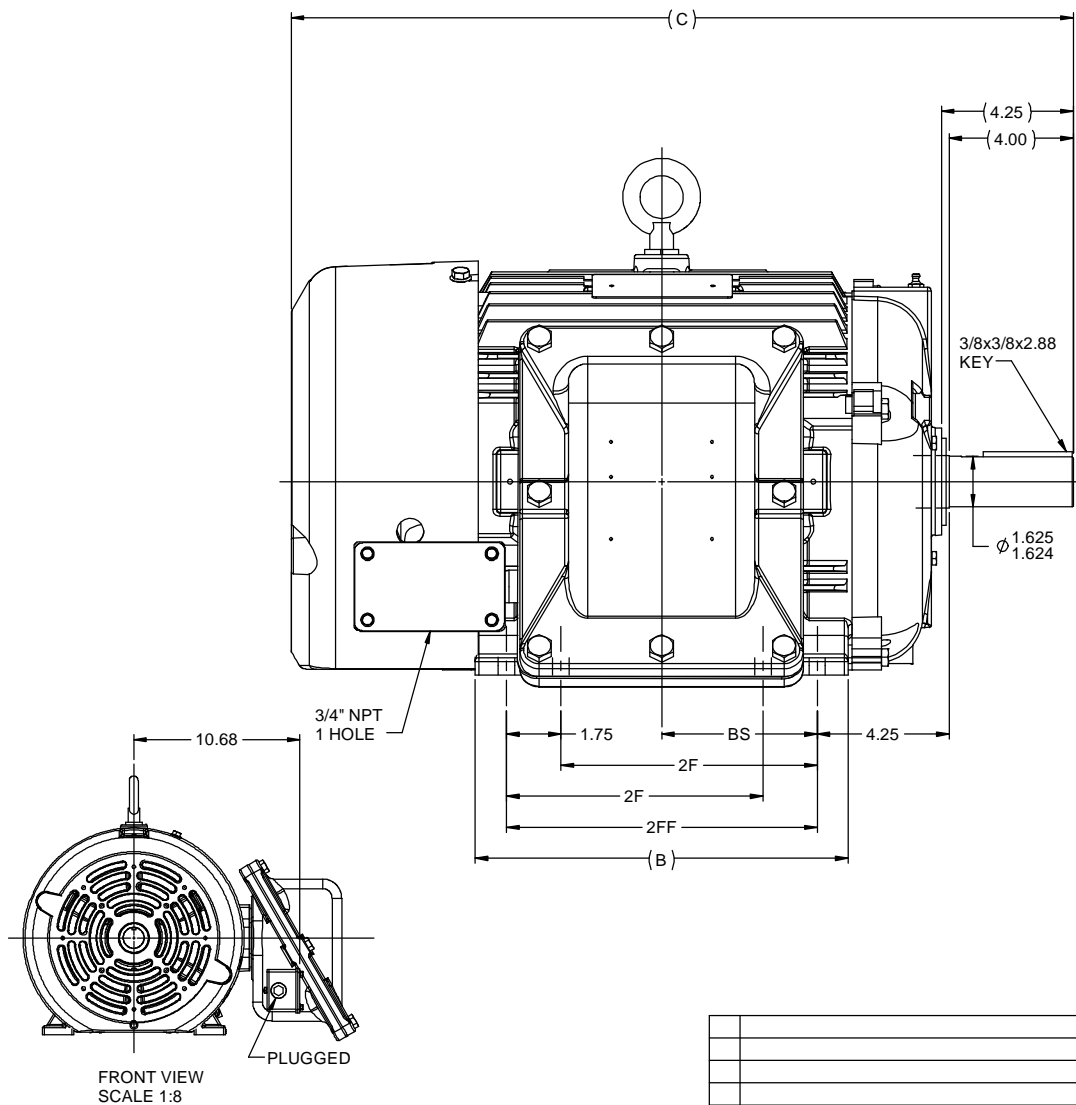
Nameplate Specifications

Phase	3	Output HP	20 Hp
Output KW	14.9 kW	Voltage	415 V
Speed	2930 rpm	Service Factor	1.15
Frame	256T	Enclosure	Totally Enclosed Fan Cooled
Thermal Protection	No Protection	Efficiency	90.3 %
Ambient Temperature	50 °C	Frequency	50 Hz
Current	26.1 A	Power Factor	88
Duty	Continuous (S1)	Insulation Class	F
Design Code	B	KVA Code	G
Drive End Bearing Size	6309	Opp Drive End Bearing Size	6210
UL	Recognized	CSA	Y
CE	Y	IP Code	56
Number of Speeds	1	Hazardous Location	ATEX ZONE 2 / ZONE 22

Technical Specifications

Electrical Type	Squirrel Cage Induction Run	Starting Method	Across The Line
Poles	2	Rotation	Reversible
Resistance Main	.345 Ohms	Mounting	Rigid Base
Motor Orientation	Horizontal	Drive End Bearing	Ball
Opp Drive End Bearing	Ball	Frame Material	Cast Iron
Shaft Type	T	Assembly/Box Mounting	F1/F2 CAPABLE
Outline Drawing	B-SS208264-1225	Connection Drawing	A-EE7300V

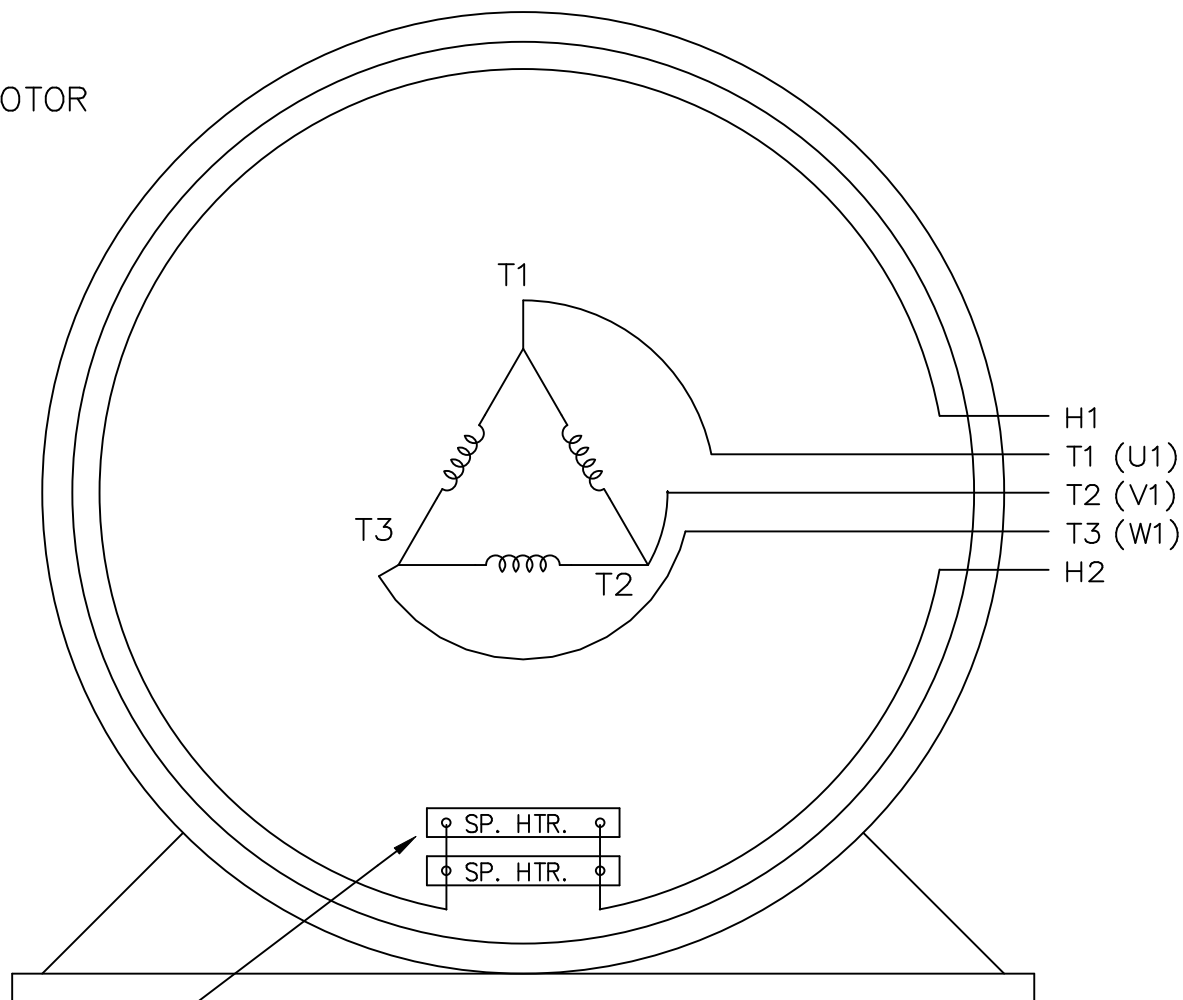
This is an uncontrolled document once printed or downloaded and is subject to change without notice. Date Created:08/24/2023



DASH	FRAME	C	B	2F	2FF	BS	--	MTG HOLES
1050	254T	23.18	10.25	8.25	--	4.12		4
1225	256T	25.18	12.00	8.25	10.00	5.00		8

				TOLERANCES UNLESS SPECIFIED		marathon [®] electric	DRAWN REP 10-31-2011	
				DEC	INCHES		CHK SJW 11-01-11	
				X	±.1	TITLE OUTLINE 250T FR - BB - TS	APPR ML 11-02-11	
				XX	±.03		SCALE 1:4	
				XXX	±.005		REF SS208106	
				XXXX	±.0005		FMT MU104806	
NO	REVISION	BY & DATE	CHK	ANG	±730"	FINISH	PREV	SIZE
			RFP			NETWORK FILE NAME SS208264		B
THIRD ANGLE PROJECTION							DRAWING NO	SS208264
							PAGE	OF
							REV	

SINGLE VOLTAGE THREE PHASE MOTOR



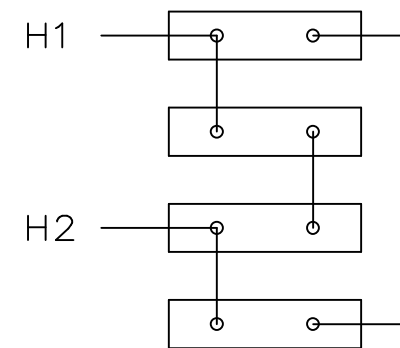
VIEW OF TERMINAL END

WHEN MORE THAN ONE
SPACE HEATER, CONNECT
IN PARALLEL

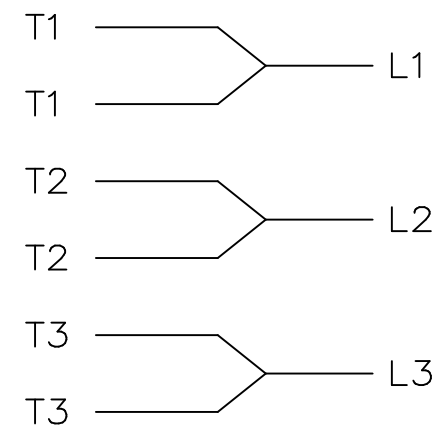
NOTE: IEC LEAD MARKINGS ARE NOTED IN PARENTHESES

EE7300V

SPACE HEATERS
CONNECTED IN
SERIES PARALLEL



IF MOTOR OR GEN.
HAS 6 LEADS



				TOLERANCES UNLESS SPECIFIED			DRAWN DJK 04-29-1993			
				DEC.	INCHES		CHK	ML	04-30-1993	
7	ADDED IEC LEAD MARKINGS AND NOTE	AK 08-24-2008	SVL	.X	±.1		APPD	TB	04-30-1993	
6	REDRAWN IN AUTOCAD	TAT 08-02-2004	ML	.XX	±.02	TITLE CONNECTION DIAGRAM 3Ø-SINGLE VOLTAGE-WITH SPACE HEATERS	SCALE 1=1			
5	REDRAWN ON CADD, ADDED SPACE HEATERS WITH	DJK 05-03-1993		.XXX	±.005		REF			
	SERIES PARALLEL CONNECTION 4025224			.XXXX	±.0005	MAT'L.	FMF			
NO.	REVISION	BY & DATE	CHK	ANG	±7'30"	FINISH	PREV			
THIS DRAWING IN DESIGN AND DETAIL IS OUR PROPERTY AND MUST NOT BE USED EXCEPT IN CONNECTION WITH OUR WORK ALL RIGHTS OF DESIGN AND INVENTION ARE RESERVED THIS IS AN ELECTRONICALLY GENERATED DOCUMENT - DO NOT SCALE THIS PRINT			RFP	CAD FILE ee7300v			SIZE	DRAWING NO.	PAGE	OF
			DIST				A	EE7300V		REV.
									7	