

PRODUCT INFORMATION PACKET

marathon®
Motors

Model No: 256TTFCA6082

Catalog No: GT3120

Globetrotter® Close-Coupled Pump Motor, 10 & 7.50 HP, 3 Ph, 60 & 50 Hz, 230/460 & 190/380 V,
1200 & 1000 RPM, 256JMV Frame, TEFC



Regal and Marathon are trademarks of Regal Rexnord Corporation or one of its affiliated companies.

©2023 Regal Rexnord Corporation, All Rights Reserved. MC017097E

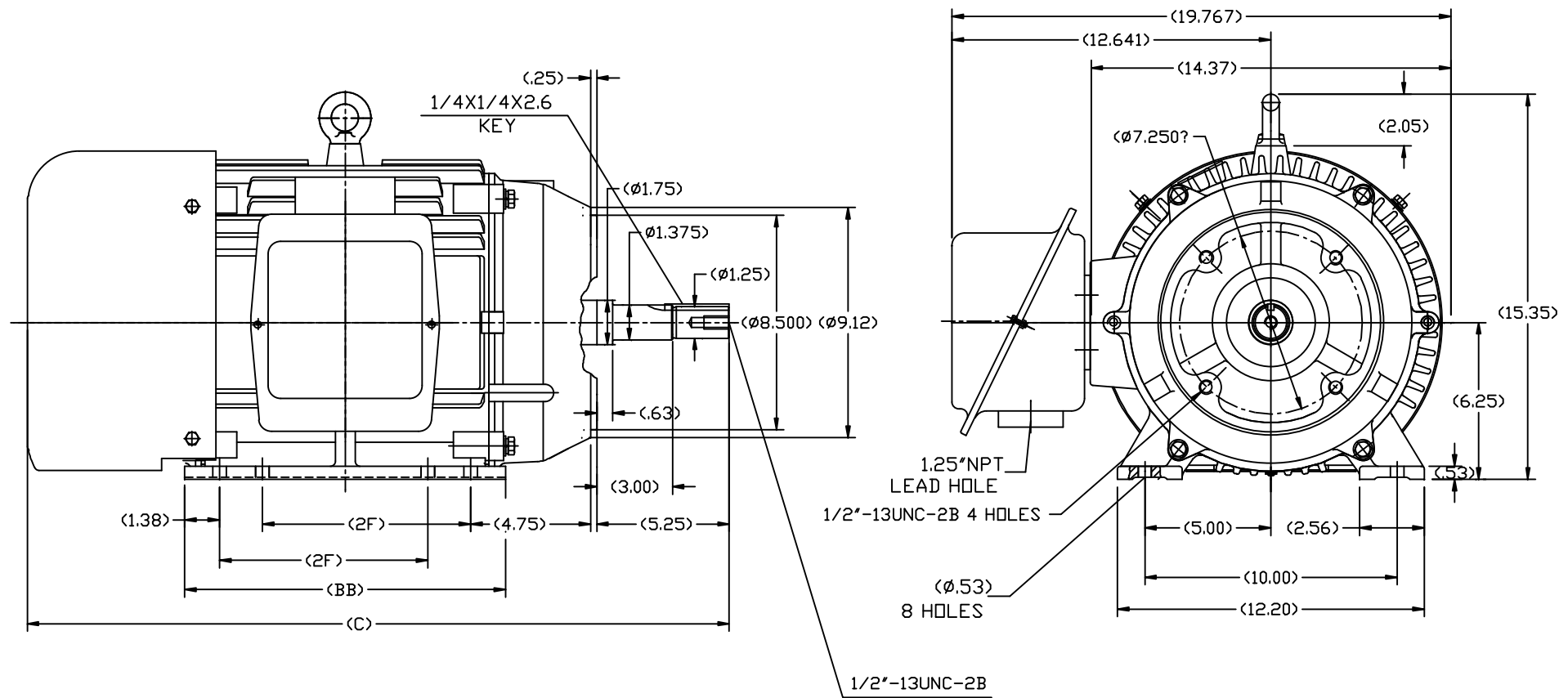
RegalRexnord

Nameplate Specifications

Phase	3	Output HP	10 & 7.50 Hp
Output KW	7.5 & 5.6 kW	Voltage	230/460 & 190/380 V
Speed	1180 & 980 rpm	Service Factor	1.15 & 1.15
Frame	256JMV	Enclosure	Totally Enclosed Fan Cooled
Thermal Protection	No Protection	Efficiency	91 & 90.2 %
Ambient Temperature	40 °C	Frequency	60 & 50 Hz
Current	28/14 & 25/12.5 A	Power Factor	74
Duty	Continuous	Insulation Class	F
Design Code	B	KVA Code	G
Drive End Bearing Size	6309	Opp Drive End Bearing Size	6209
UL	Recognized	CSA	Y
CE	Y	IP Code	43
Number of Speeds	1		

Technical Specifications

Electrical Type	Squirrel Cage Inverter Rated	Starting Method	Line Or Inverter
Poles	6	Rotation	Reversible
Resistance Main	.935 Ohms	Mounting	Rigid Base
Motor Orientation	Horizontal Or Shaft Down	Drive End Bearing	Ball
Opp Drive End Bearing	Ball	Frame Material	Cast Iron
Shaft Type	JM	Overall Length	27.80 in
Shaft Diameter	1.250 in	Shaft Extension	5.25 in
Assembly/Box Mounting	F1/F2 CAPABLE		
Connection Drawing	EE7308K	Outline Drawing	SS620564-256

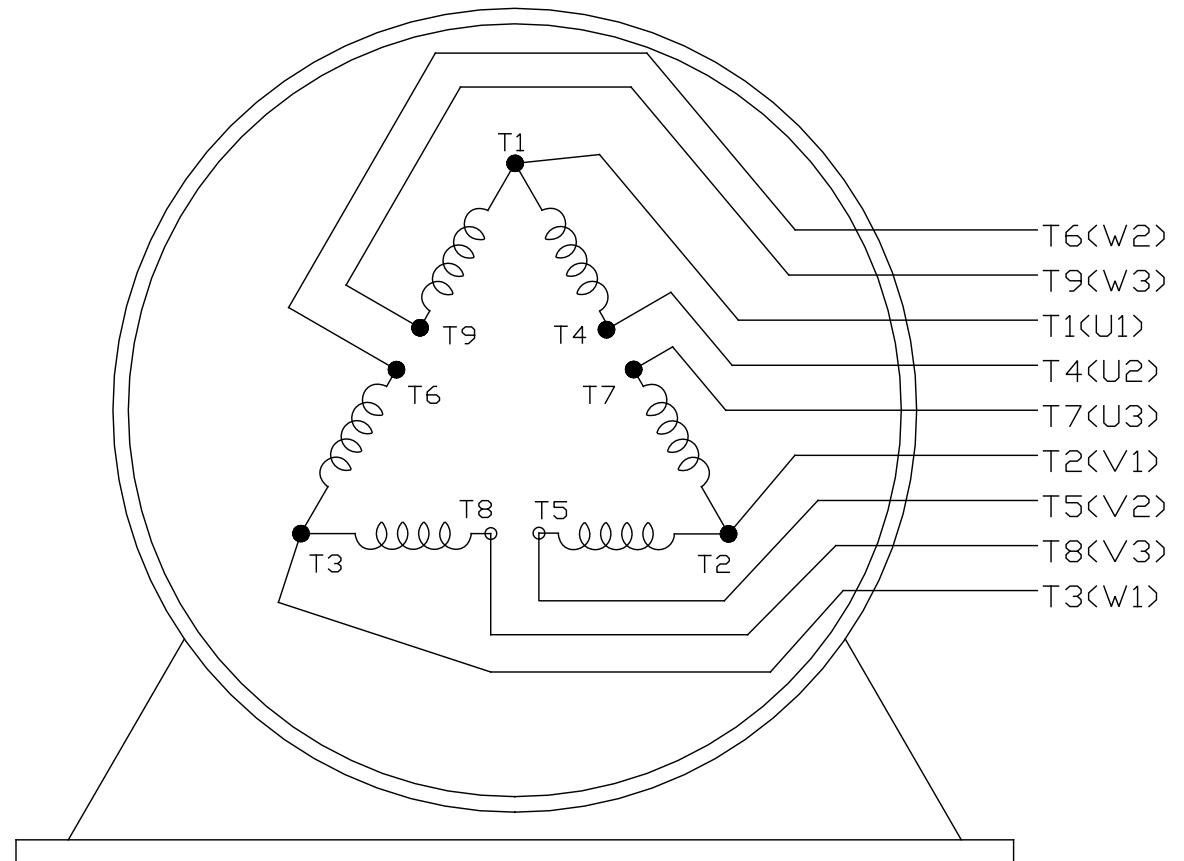


254	26.60	12.80	8.25
256	27.80	13.98	10.00
FRAME	C	BB	2F

		TOLERANCES UNLESS SPECIFIED		REGAL-BELOIT CORPORATION		DRAWN L.S.J 05-16-2012	
		DEC.	INCHES			CHK	
		.X	±.1			APPD	
		.XX	±.03			SCALE	1=4
		.XXX	±.005			REF	
		.XXXX	±.0005			FMF	HWADA
						PREV	
NO.	REVISION	BY & DATE	CHK	ANG	±1/2	FINISH	
THIS DRAWING IN DESIGN AND DETAIL IS OUR PROPERTY AND MUST NOT BE USED EXCEPT IN CONNECTION WITH OUR WORK. ALL RIGHTS OF DESIGN AND INVENTION ARE RESERVED. THIS IS AN ELECTRONICALLY GENERATED DOCUMENT - DO NOT SCALE THIS PRINT				RFP		CAD FILE	SS620564
				DIST			
						SIZE	DRAWING NO.
						B	SS620564
							REV.

LOW VOLTAGE

EE7308K

HIGH VOLTAGE

VIEW OF TERMINAL END

			TOLERANCES UNLESS SPECIFIED			 REGAL - BELOIT CORPORATION		DRAWN PGK 06-04-1997		
NO.	REVISION	BY & DATE	CHK	ANG	± 7'30"			CHK	ML	06-05-1997
E	CORRECTED IEC MARKINGS ECD-0111208	WGJ 01-23-2017	EMH	DEC.	INCHES	TITLE CONNECTION DIAGRAM DELTA CON. - 3Ø - 9 LEADS		APPD	GK	06-15-1997
D	RE-DRAWN WITH REGAL LOGO ECD-0110493	WGJ 09-30-2016	EMH	.X	±.1					
8	ADDED IEC DESIGNATIONS MU95020	TJW 4/30/2010	MJS	.XX	±.02					
7	REVISED HIGH VOLTAGE L2 WAS L3 CN52600-354	MRB 09-21-1998		.XXX	±.005					
6	REDRAWN ON CADD	PGK 06-05-1997		.XXXX	±.0005					
						MAT'L.		FMF		
						FINISH		PREV		
THIS DRAWING IN DESIGN AND DETAIL IS OUR PROPERTY AND MUST NOT BE USED EXCEPT IN CONNECTION WITH OUR WORK ALL RIGHTS OF DESIGN AND INVENTION ARE RESERVED THIS IS AN ELECTRONICALLY GENERATED DOCUMENT - DO NOT SCALE THIS PRINT			RFP		CAD FILE EE7308K		SIZE	DRAWING NO.	PAGE	OF
			DIST				A	EE7308K		
										REV.
										E

CERTIFICATION DATA SHEET

Model#: 256TTFCA6082 AA

WINDING#: CHT25660001 NONE 1

CONN. DIAGRAM: EE7308K

ASSEMBLY: F1/F2 CAPABLE

OUTLINE: SS620564

TYPICAL MOTOR PERFORMANCE DATA

HP	KW	SYNC. RPM	F.L. RPM	FRAME	ENCLOSURE	KVA CODE	DESIGN
10&7 1/2	7.50&5.60	1200	1180&980	256JMV	TEFC	G	B

PH	Hz	VOLTS	FL AMPS	START TYPE	DUTY	INSL	S.F	AMB°C	ELEVATION
3	60/50	230/460#190/ 380	28/14&25/12.5	LINE OR INVERTER	CONTINUOU S	F7	1.15/1.15	40	3300

FULL LOAD EFF: 91&90.2	3/4 LOAD EFF: 91	1/2 LOAD EFF: 90.2	GTD. EFF	ELEC. TYPE	NO LOAD AMPS
FULL LOAD PF: 74&75	3/4 LOAD PF: 68	1/2 LOAD PF: 56	90.2	SQ CAGE INV RATED	14 / 7

F.L. TORQUE	LOCKED ROTOR AMPS	L.R. TORQUE	B.D. TORQUE	F.L. RISE°C
44.5 LB-FT	150 / 75	69 LB-FT 155	130 LB-FT 292	45

SOUND PRESSURE @ 3 FT.	SOUND POWER	ROTOR WK^2	MAX. WK^2	SAFE STALL TIME	STARTS /HOUR	APPROX. MOTOR WGT
56 dBA	66 dBA	3 LB-FT^2	200 LB-FT^2	20 SEC.	2	375 LBS.

*** SUPPLEMENTAL INFORMATION ***

DE BRACKET TYPE	ODE BRACKET TYPE	MOUNT TYPE	ORIENTATION	SEVERE DUTY	HAZARDOUS LOCATION	DRIP COVER	SCREENS	PAINT
C-FACE	STANDARD	RIGID	HORIZONTAL OR SHAFT DOWN	FALSE	NONE	FALSE	NONE	BLUE (ENAMEL)

BEARINGS		GREASE	SHAFT TYPE	SPECIAL DE	SPECIAL ODE	SHAFT MATERIAL	FRAME MATERIAL
DE	OPE						
BALL	BALL	POLYREX EM	JM	NONE	NONE	1045 HOT ROLLED (C-204)	CAST IRON
6309	6209						

THERMO-PROTECTORS				THERMISTORS	CONTROL	SPACE /n HEATERS
THERMOSTATS	PROTECTORS	WDG RTDs	BRG RTDs			
NONE	NOT	NONE	NONE	NONE	FALSE	NONE VOLTS

If Inverter equals NONE, contact factory for further information

* N O T E S *	INVERTER TORQUE: VARIABLE 10:1
	INV. HP SPEED RANGE: NONE
	ENCODER: NONE NONE NONE NONE NONE PPR
	BRAKE: NONE NONE NONE P/N NONE NONE NONE NONE FT-LB NONE V NONE Hz

DATE: 06/23/2017 06:59:16 AM
FORM 3531 REV.3 02/07/99
** Subject to change without notice.

Data Sheet

Date: 6/19/2017

Customer: _____

Attention: _____

Submitted by: FAREEDA DUDEKULA



256TTFCA6082

Submittal

Data @ 460 V

Motor Load Data

Load	0%	25%	50%	75%	100%	115%	125%	LR	
Current (Amps)	7.0	7.6	9.2	11.2	13.4	14.8	16.5	75.0	
Torque (ft-lb)	0.00	11.0	22.0	33.2	44.5	51.5	56.0	69.0	
RPM	1200	1195	1190	1185	1180	1,178	1175	0	
Efficiency (%)		84.0	90.2	91.0	91.0	91.0	90.2		
P.F. (%)	5.0	36.0	56.0	68.0	76.0	76.5	77.0	35.0	

Motor Speed Data

	LR	Pull-Up	BD	Rated	Idle																													
Speed (RPM)	0	400	1100	1180	1200																													
Current (Amps)	75.0	68.0	45.5	13.4	7.0																													
Torque (ft-lb)	69.0	61.0	130	44.5	0.00																													
<div><div>— Efficiency (%) — P.F. (%) — Current (Amps)</div><table><caption>Graph Data</caption><thead><tr><th>Load (%)</th><th>Efficiency (%)</th><th>P.F. (%)</th><th>Current (Amps)</th></tr></thead><tbody><tr><td>25</td><td>84</td><td>1.5</td><td>7.5</td></tr><tr><td>50</td><td>89</td><td>6.5</td><td>10.5</td></tr><tr><td>75</td><td>91</td><td>10.5</td><td>13.5</td></tr><tr><td>100</td><td>91</td><td>12.0</td><td>15.5</td></tr><tr><td>125</td><td>90</td><td>12.5</td><td>16.5</td></tr></tbody></table></div>						Load (%)	Efficiency (%)	P.F. (%)	Current (Amps)	25	84	1.5	7.5	50	89	6.5	10.5	75	91	10.5	13.5	100	91	12.0	15.5	125	90	12.5	16.5	Information Block				
						Load (%)	Efficiency (%)	P.F. (%)	Current (Amps)																									
						25	84	1.5	7.5																									
						50	89	6.5	10.5																									
						75	91	10.5	13.5																									
						100	91	12.0	15.5																									
						125	90	12.5	16.5																									
						HP		10.0																										
						Sync. RPM		1200																										
						Frame		256																										
						Enclosure		TEFC																										
						Construction		TFC																										
						Voltage		230/460#190/381 V																										
						Frequency		60 Hz																										
						Design		B																										
						LR Code letter		G																										
						Service Factor		1.15																										
Temp Rise @ FL		45 °C																																
Duty		CONT																																
Ambient		40 °C																																
Elevation		1,000 feet																																
Rotor/Shaft wk²		3.0 Lb-Ft²																																
Ref Wdg		CHT25660001 NONE																																
Sound Pressure @ 1M		56 dBA																																
VFD Rating		VARIABLE 10:1																																
Outline Dwg		SS620564																																
Conn. Diag		EE7308K																																
Additional Specifications:																																		
0																																		
0																																		
EQUIV CKT (OHMS / PHASE)																																		
R1		R2		X1		X2		Xm																										
0.5960		0.3550		1.6450		2.8080		36.7310																										

Speed -Torque Curve

