

PRODUCT INFORMATION PACKET

marathon®
Motors

Model No: 256TTFCA6038

Catalog No: GT3525

20 HP Close-Coupled Pump Motor, 3 phase, 1800 RPM, 575 V, 256JP Frame, TEFC
Close-Coupled Pump Motors



Regal and Marathon are trademarks of Regal Rexnord Corporation or one of its affiliated companies.
©2021 Regal Rexnord Corporation, All Rights Reserved. MC017097E

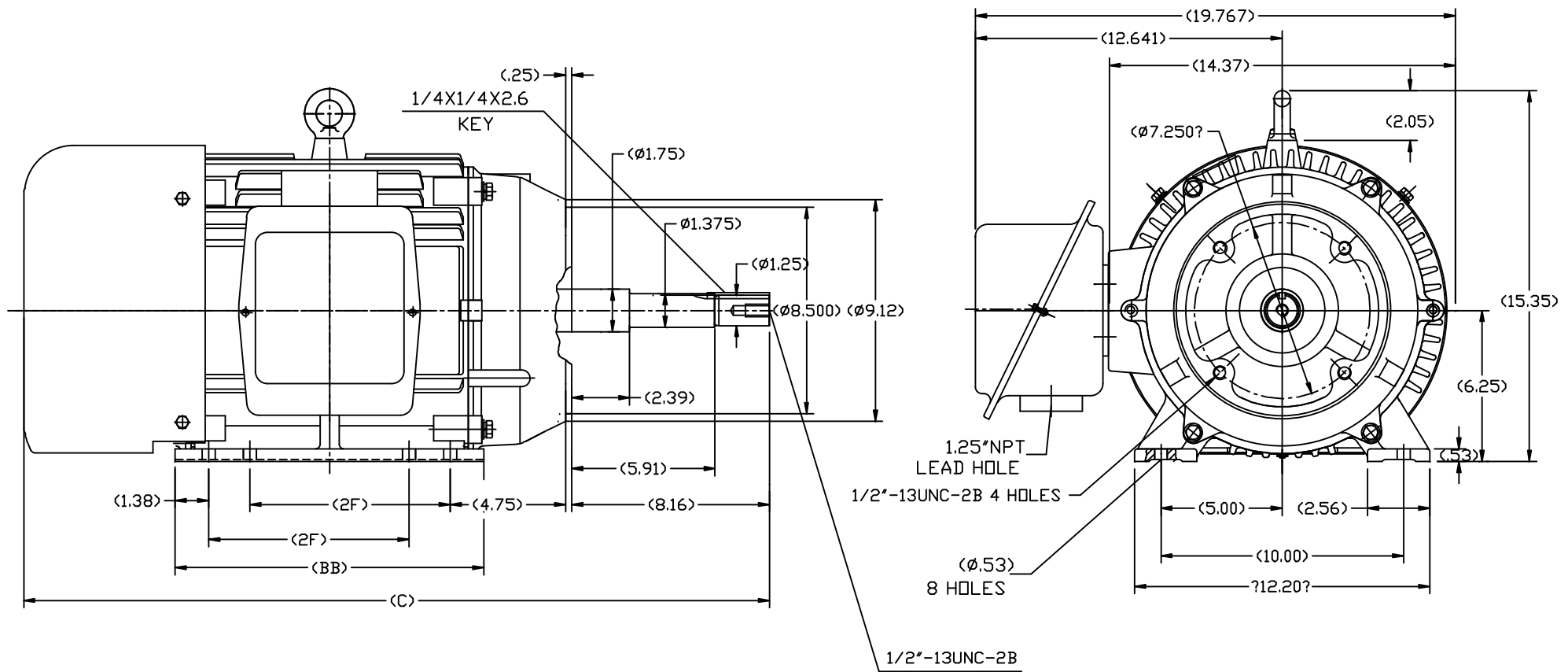
RegalRexnord

Nameplate Specifications


Output HP	20 Hp	Output KW	14.9 kW
Frequency	60 Hz	Voltage	575 V
Current	19.4 A	Speed	1773 rpm
Service Factor	1.15	Phase	3
Efficiency	93 %	Power Factor	83.5
Duty	Continuous	Insulation Class	F
Design Code	B	KVA Code	G
Frame	256JP	Enclosure	Totally Enclosed Fan Cooled
Thermal Protection	No	Ambient Temperature	40 °C
Drive End Bearing Size	6309	Opp Drive End Bearing Size	6209
UL	Recognized	CSA	Y
CE	Y	IP Code	43
Number of Speeds	1		

Technical Specifications

Electrical Type	Squirrel Cage Inverter Rated	Starting Method	Line Or Inverter
Poles	4	Rotation	Reversible
Resistance Main	.353 Ohms	Mounting	Rigid Base
Motor Orientation	Horizontal	Drive End Bearing	Ball
Opp Drive End Bearing	Ball	Frame Material	Cast Iron
Shaft Type	JP	Overall Length	30.71 in
Frame Length	12.2 in	Shaft Diameter	1.250 in
Shaft Extension	8.16 in	Assembly/Box Mounting	F1/F2 CAPABLE
Outline Drawing	SS620567-256	Connection Drawing	EE7300



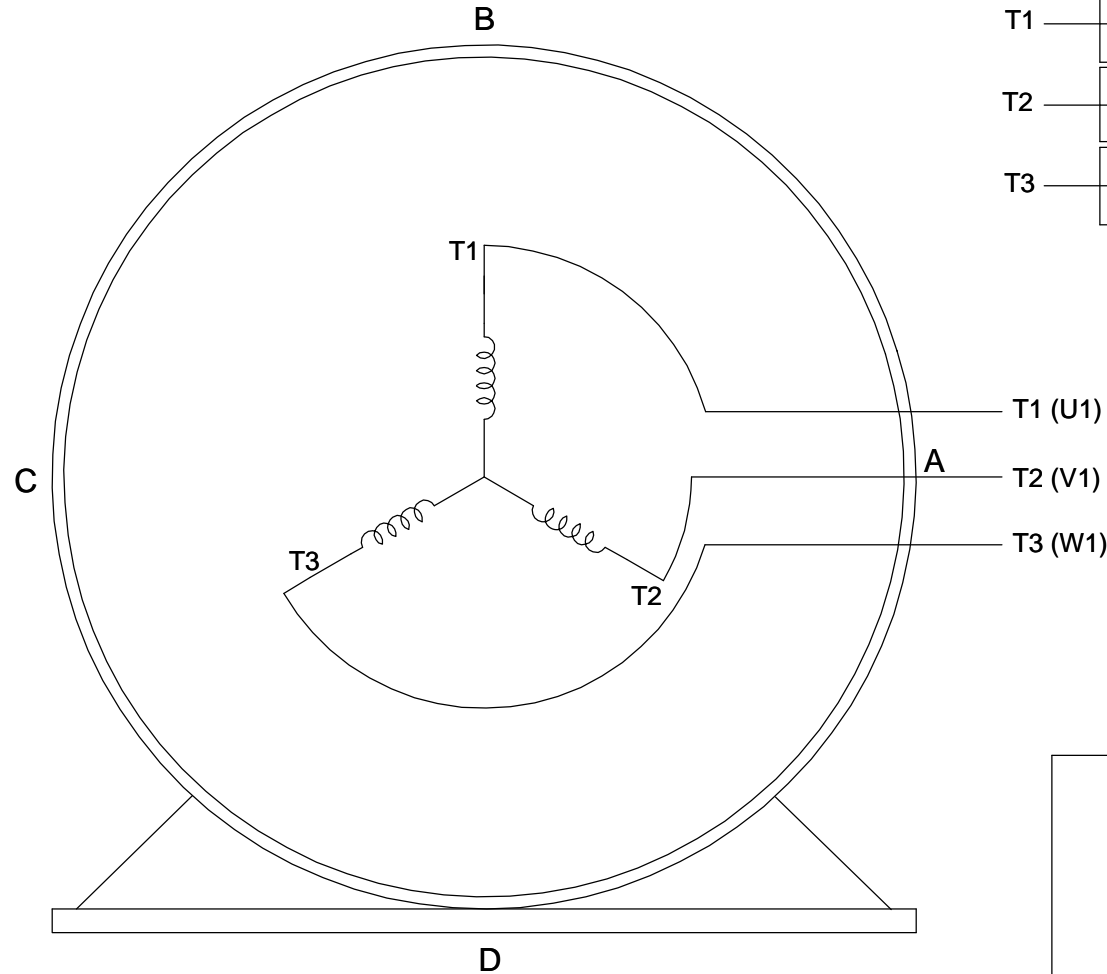
254	29.51	12.80	8.25
256	30.71	13.98	10.00
FRAME	C	BB	2F

		TOLERANCES UNLESS SPECIFIED		 REGAL-BELOIT CORPORATION	DRAWN L.S.J 05-16-2012	
DEC.	INCHES				CHK	
.X	±.1				APPD	
.XX	±.03				SCALE	1=4
.XXX	±.005				REF	
.XXXX	±.0005			MAT'L	FMF	HWADA
NO.	REVISION	BY & DATE	CHK	ANG	±1/2	FINISH
THIS DRAWING IN DESIGN AND DETAIL IS OUR PROPERTY AND MUST NOT BE USED EXCEPT IN CONNECTION WITH OUR WORK. ALL RIGHTS OF DESIGN AND INVENTION ARE RESERVED. THIS IS AN ELECTRONICALLY GENERATED DOCUMENT - DO NOT SCALE THIS PRINT				RFP	CAD FILE	SS620567
				DIST	SIZE	DRAWING NO.
					B	SS620567
						REV.

THREE PHASE - SINGLE VOLTAGE MOTOR - CONDUIT BOX @ 'A'

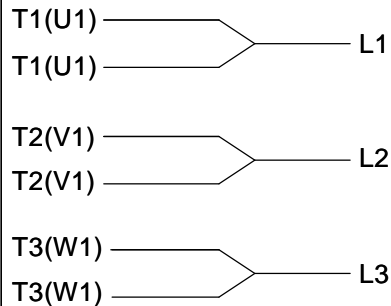
TO REVERSE ROTATION:
INTERCHANGE ANY TWO
LINE LEAD CONNECTIONS.

TERMINAL BLOCK WHEN SPECIFIED



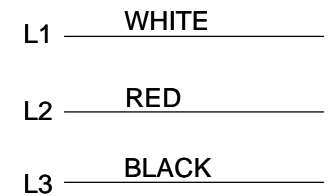
VIEW OF TERMINAL END

IF MOTOR HAS 6 LEADS



A-9806 DECAL

OPTIONAL CORD CONNECTION



DRAWING REVISION AB	REVISION BY JJB	DATE 06-27-2017
ECO ECO-0125361	APPROVED BY TB	DATE 06-27-2017
ECO DESCRIPTION UPDATED TO CURRENT STANDARDS		
<small>COPYRIGHT REGAL BELOIT AMERICA, INC. ALL RIGHTS RESERVED. PROPRIETARY AND CONFIDENTIAL INFORMATION - THIS DOCUMENT IS THE PROPERTY OF REGAL BELOIT AMERICA, INC. ("OWNER") AND CONTAINS OWNER'S PROPRIETARY INFORMATION. ANY PERSON, CORPORATION OR OTHER FIRM RECEIVING IT IS DEEMED, BY RECEIVING IT, TO AGREE THAT IT, AND/OR ANY PART OF IT, SHALL NOT BE DISCLOSED TO ANY PERSON, CORPORATION OR OTHER ENTITY, DUPLICATED, AND/OR USED, EXCEPT AS EXPRESSLY APPROVED IN WRITING IN ADVANCE BY OWNER. THIS DOCUMENT SHALL BE RETURNED TO OWNER UPON REQUEST. IT MAY BE SUBJECT TO CERTAIN RESTRICTIONS UNDER APPLICABLE EXPORT CONTROL LAWS AND REGULATIONS.</small>		

DRAWN BY DA
DATE 03-26-1993
APPROVED BY TB
DATE 03-26-1993
REFERENCE

THIRD ANGLE
PROJECTION



Regal Beloit America, Inc.

DESCRIPTION

CONNECTION DIAGRAM
EXTERNAL - SINGLE VOLTAGE - 3Ø MOTOR

MATERIAL

PROCESS/FINISH

SIZE
A

DRAWING NUMBER

EE7300

SHEET
1 OF 1

CERTIFICATION DATA SHEET

Model#: 256TTFCA6038 AA
 CONN. DIAGRAM: EE7300
 OUTLINE: SS620567

WINDING#: CHT25640005 NONE 2
 ASSEMBLY: F1/F2 CAPABLE

TYPICAL MOTOR PERFORMANCE DATA

HP	KW	SYNC. RPM	F.L. RPM	FRAME	ENCLOSURE	KVA CODE	DESIGN
20	14.9	1800	1773	256JP	TEFC	G	B

PH	Hz	VOLTS	FL AMPS	START TYPE	DUTY	INSL	S.F	AMB°C	ELEVATION
3	60	575	19.4	LINE OR INVERTER	CONTINUOU S	F7	1.15	40	3300

FULL LOAD EFF: 93	3/4 LOAD EFF: 93	1/2 LOAD EFF: 91.7	GTD. EFF	ELEC. TYPE	NO LOAD AMPS
FULL LOAD PF: 83.5	3/4 LOAD PF: 79	1/2 LOAD PF: 69	92.4	SQ CAGE INV RATED	7.8

F.L. TORQUE	LOCKED ROTOR AMPS	L.R. TORQUE	B.D. TORQUE	F.L. RISE°C
59.5 LB-FT	112	104 LB-FT 175	156 LB-FT 262	60

SOUND PRESSURE @ 3 FT.	SOUND POWER	ROTOR WK^2	MAX. WK^2	SAFE STALL TIME	STARTS /HOUR	APPROX. MOTOR WGT
65 dBA	75 dBA	4 LB-FT^2	125 LB-FT^2	20 SEC.	2	455 LBS.

*** SUPPLEMENTAL INFORMATION ***

DE BRACKET TYPE	ODE BRACKET TYPE	MOUNT TYPE	ORIENTATION	SEVERE DUTY	HAZARDOUS LOCATION	DRIP COVER	SCREENS	PAINT
C-FACE	STANDARD	RIGID	HORIZONTAL	FALSE	NONE	FALSE	NONE	BLUE (ENAMEL)

BEARINGS		GREASE	SHAFT TYPE	SPECIAL DE	SPECIAL ODE	SHAFT MATERIAL	FRAME MATERIAL
DE	OPE						
BALL	BALL						
6309	6209	POLYREX EM	JP	NONE	NONE	1045 HOT ROLLED (C-204)	CAST IRON

THERMO-PROTECTORS				THERMISTORS	CONTROL	SPACE /n HEATERS
THERMOSTATS	PROTECTORS	WDG RTDs	BRG RTDs			
NONE	NOT	NONE	NONE	NONE	FALSE	NONE VOLTS

If Inverter equals NONE, contact factory for further information

INVERTER TORQUE: VARIABLE 10:1
 INV. HP SPEED RANGE: NONE

ENCODER: NONE
 NONE NONE
 NONE NONE PPR

BRAKE: NONE NONE
 NONE P/N NONE
 NONE NONE
 NONE FT-LB NONE V NONE Hz

*
N
O
T
E
S
*

DATE: 06/23/2017 06:56:49 AM
 FORM 3531 REV.3 02/07/99
 ** Subject to change without notice.

Data Sheet

Date: 6/19/2017

Customer: _____

Attention: _____

Submitted by: FAREEDA DUDEKULA



256TTFCA6038

Submittal

Data @ 575 V

Motor Load Data

Load	0%	25%	50%	75%	100%	115%	125%	LR	
Current (Amps)	7.8	9.0	12.0	15.4	19.2	21.6	23.8	112	
Torque (ft-lb)	0.00	15.0	29.5	44.5	59.5	68.5	75.0	104	
RPM	1800	1792	1787	1780	1770	1,765	1760	0	
Efficiency (%)		86.5	91.7	93.0	93.0	92.4	92.4		
P.F. (%)	5.0	46.5	69.0	79.0	83.0	84.0	85.5	39.0	

Motor Speed Data

	LR	Pull-Up	BD	Rated	Idle																																																																																																																																							
Speed (RPM)	0	900	1700	1770	1800																																																																																																																																							
Current (Amps)	112	104	74.4	19.2	7.8																																																																																																																																							
Torque (ft-lb)	104	88.0	156	59.5	0.00																																																																																																																																							
<div><div><div>— Efficiency (%)</div><div>— P.F. (%)</div><div>— Current (Amps)</div></div><div>EFFICIENCY (%)</div><div>P.F. (%)</div><div>CURRENT (AMPS)</div><div>LOAD</div></div> <table><tr><td colspan="2">HP</td><td colspan="3">20.0</td></tr><tr><td colspan="2">Sync. RPM</td><td colspan="3">1800</td></tr><tr><td colspan="2">Frame</td><td colspan="3">256</td></tr><tr><td colspan="2">Enclosure</td><td colspan="3">TEFC</td></tr><tr><td colspan="2">Construction</td><td colspan="3">TFC</td></tr><tr><td colspan="2">Voltage</td><td colspan="3">575 V</td></tr><tr><td colspan="2">Frequency</td><td colspan="3">60 Hz</td></tr><tr><td colspan="2">Design</td><td colspan="3">B</td></tr><tr><td colspan="2">LR Code letter</td><td colspan="3">G</td></tr><tr><td colspan="2">Service Factor</td><td colspan="3">1.15</td></tr><tr><td colspan="2">Temp Rise @ FL</td><td colspan="3">60 ° C</td></tr><tr><td colspan="2">Duty</td><td colspan="3">CONT</td></tr><tr><td colspan="2">Ambient</td><td colspan="3">40 ° C</td></tr><tr><td colspan="2">Elevation</td><td colspan="3">1,000 feet</td></tr><tr><td colspan="2">Rotor/Shaft wk²</td><td colspan="3">4.0 Lb-Ft²</td></tr><tr><td colspan="2">Ref Wdg</td><td colspan="3">CHT25640005 NONE</td></tr><tr><td colspan="2">Sound Pressure @ 1M</td><td colspan="3">65 dBA</td></tr><tr><td colspan="2">VFD Rating</td><td colspan="3">VARIABLE 10:1</td></tr><tr><td colspan="2">Outline Dwg</td><td colspan="3">SS620567</td></tr><tr><td colspan="2">Conn. Diag</td><td colspan="3">EE7300</td></tr><tr><td colspan="5">Additional Specifications:</td></tr><tr><td colspan="5">0</td></tr><tr><td colspan="5">0</td></tr><tr><td colspan="5">EQUIV CKT (OHMS / PHASE)</td></tr><tr><td>R1</td><td>R2</td><td>X1</td><td>X2</td><td>Xm</td></tr><tr><td>0.3620</td><td>0.2820</td><td>1.1760</td><td>2.1520</td><td>42.1560</td></tr></table>						HP		20.0			Sync. RPM		1800			Frame		256			Enclosure		TEFC			Construction		TFC			Voltage		575 V			Frequency		60 Hz			Design		B			LR Code letter		G			Service Factor		1.15			Temp Rise @ FL		60 ° C			Duty		CONT			Ambient		40 ° C			Elevation		1,000 feet			Rotor/Shaft wk²		4.0 Lb-Ft²			Ref Wdg		CHT25640005 NONE			Sound Pressure @ 1M		65 dBA			VFD Rating		VARIABLE 10:1			Outline Dwg		SS620567			Conn. Diag		EE7300			Additional Specifications:					0					0					EQUIV CKT (OHMS / PHASE)					R1	R2	X1	X2	Xm	0.3620	0.2820	1.1760	2.1520	42.1560	HP	20.0			
						HP		20.0																																																																																																																																				
						Sync. RPM		1800																																																																																																																																				
						Frame		256																																																																																																																																				
						Enclosure		TEFC																																																																																																																																				
						Construction		TFC																																																																																																																																				
						Voltage		575 V																																																																																																																																				
						Frequency		60 Hz																																																																																																																																				
						Design		B																																																																																																																																				
						LR Code letter		G																																																																																																																																				
						Service Factor		1.15																																																																																																																																				
						Temp Rise @ FL		60 ° C																																																																																																																																				
						Duty		CONT																																																																																																																																				
						Ambient		40 ° C																																																																																																																																				
						Elevation		1,000 feet																																																																																																																																				
						Rotor/Shaft wk²		4.0 Lb-Ft²																																																																																																																																				
						Ref Wdg		CHT25640005 NONE																																																																																																																																				
Sound Pressure @ 1M		65 dBA																																																																																																																																										
VFD Rating		VARIABLE 10:1																																																																																																																																										
Outline Dwg		SS620567																																																																																																																																										
Conn. Diag		EE7300																																																																																																																																										
Additional Specifications:																																																																																																																																												
0																																																																																																																																												
0																																																																																																																																												
EQUIV CKT (OHMS / PHASE)																																																																																																																																												
R1	R2	X1	X2	Xm																																																																																																																																								
0.3620	0.2820	1.1760	2.1520	42.1560																																																																																																																																								
Sync. RPM	1800																																																																																																																																											
Frame	256																																																																																																																																											
Enclosure	TEFC																																																																																																																																											
Construction	TFC																																																																																																																																											
Voltage	575 V																																																																																																																																											
Frequency	60 Hz																																																																																																																																											
Design	B																																																																																																																																											
LR Code letter	G																																																																																																																																											
Service Factor	1.15																																																																																																																																											
Temp Rise @ FL	60 ° C																																																																																																																																											
Duty	CONT																																																																																																																																											
Ambient	40 ° C																																																																																																																																											
Elevation	1,000 feet																																																																																																																																											
Rotor/Shaft wk²	4.0 Lb-Ft²																																																																																																																																											
Ref Wdg	CHT25640005 NONE																																																																																																																																											
Sound Pressure @ 1M	65 dBA																																																																																																																																											
VFD Rating	VARIABLE 10:1																																																																																																																																											
Outline Dwg	SS620567																																																																																																																																											
Conn. Diag	EE7300																																																																																																																																											
Additional Specifications:																																																																																																																																												
0																																																																																																																																												
0																																																																																																																																												
EQUIV CKT (OHMS / PHASE)																																																																																																																																												
R1	R2	X1	X2	Xm																																																																																																																																								
0.3620	0.2820	1.1760	2.1520	42.1560																																																																																																																																								

Speed -Torque Curve

