

PRODUCT INFORMATION PACKET

marathon®
Motors

Model No: 256TTFCA6037

Catalog No: GT3425

Globetrotter® Close-Coupled Pump Motor, 20 & 15 HP, 3 Ph, 60 & 50 Hz, 230/460 & 190/380 V,
1800 & 1500 RPM, 256JP Frame, TEFC



Regal and Marathon are trademarks of Regal Rexnord Corporation or one of its affiliated companies.

©2023 Regal Rexnord Corporation, All Rights Reserved. MC017097E

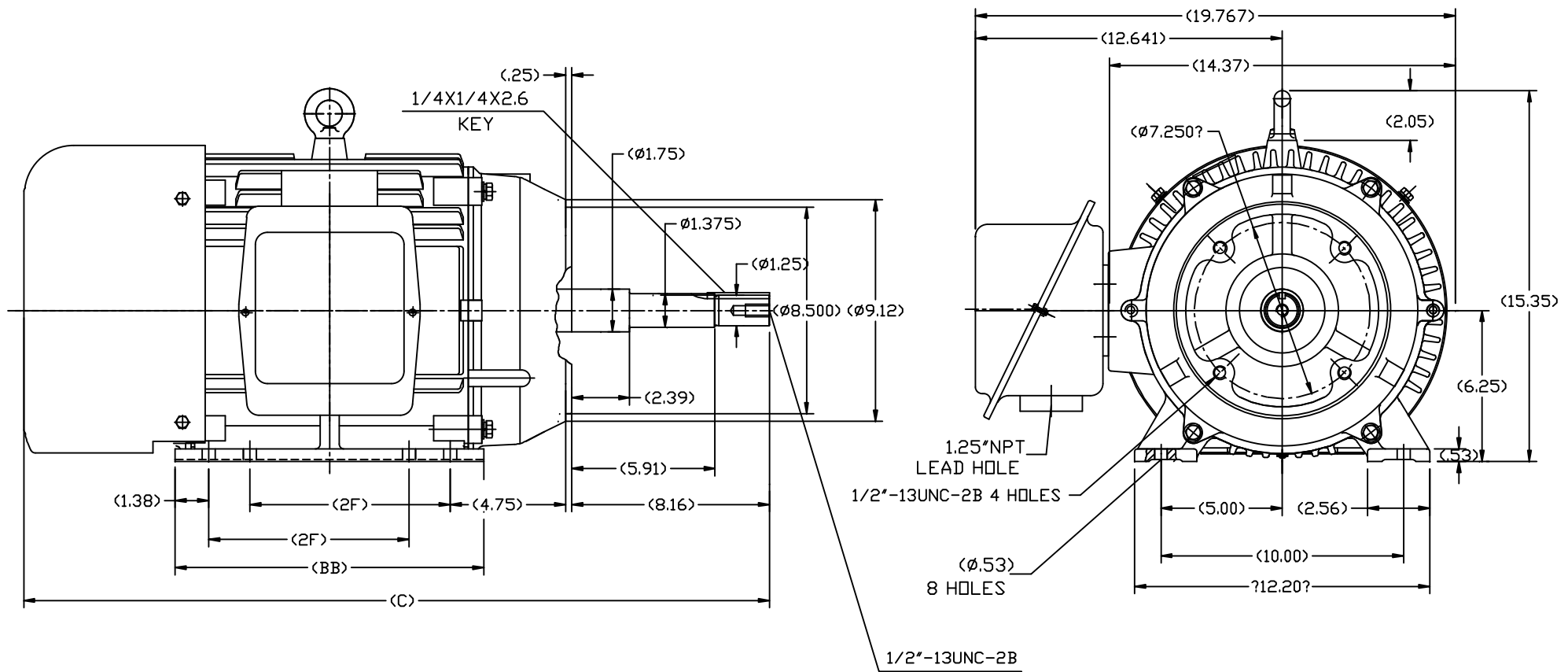
RegalRexnord

Nameplate Specifications

Phase	3	Output HP	20 & 15 Hp
Output KW	14.9 & 11.2 kW	Voltage	230/460 & 190/380 V
Speed	1773 & 1478 rpm	Service Factor	1.15 & 1.15
Frame	256JP	Enclosure	Totally Enclosed Fan Cooled
Thermal Protection	No Protection	Efficiency	93 & 92.4 %
Ambient Temperature	40 °C	Frequency	60 & 50 Hz
Current	48.5/24.2 & 43.5/21.8 A	Power Factor	83.5
Duty	Continuous	Insulation Class	F
Design Code	B	KVA Code	G
Drive End Bearing Size	6309	Opp Drive End Bearing Size	6209
UL	Recognized	CSA	Y
CE	Y	IP Code	43
Number of Speeds	1		

Technical Specifications

Electrical Type	Squirrel Cage Inverter Rated	Starting Method	Line Or Inverter
Poles	4	Rotation	Reversible
Resistance Main	.353 Ohms	Mounting	Rigid Base
Motor Orientation	Horizontal	Drive End Bearing	Ball
Opp Drive End Bearing	Ball	Frame Material	Cast Iron
Shaft Type	JP	Overall Length	30.71 in
Frame Length	11.73 in	Shaft Diameter	1.250 in
Shaft Extension	8.16 in	Assembly/Box Mounting	F1/F2 CAPABLE
Inverter Load	VARIABLE 10:1		
Outline Drawing	SS620567-256	Connection Drawing	EE7308K

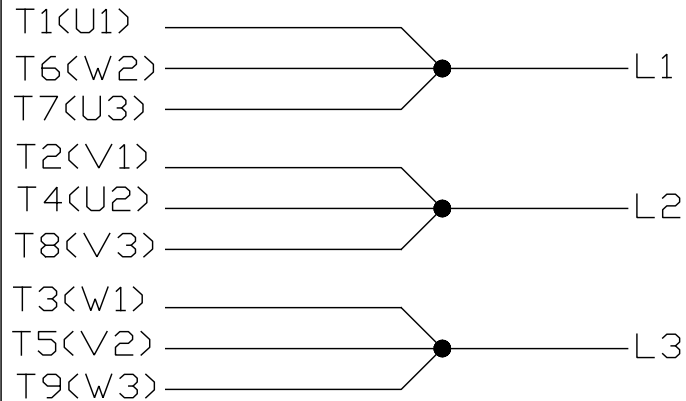
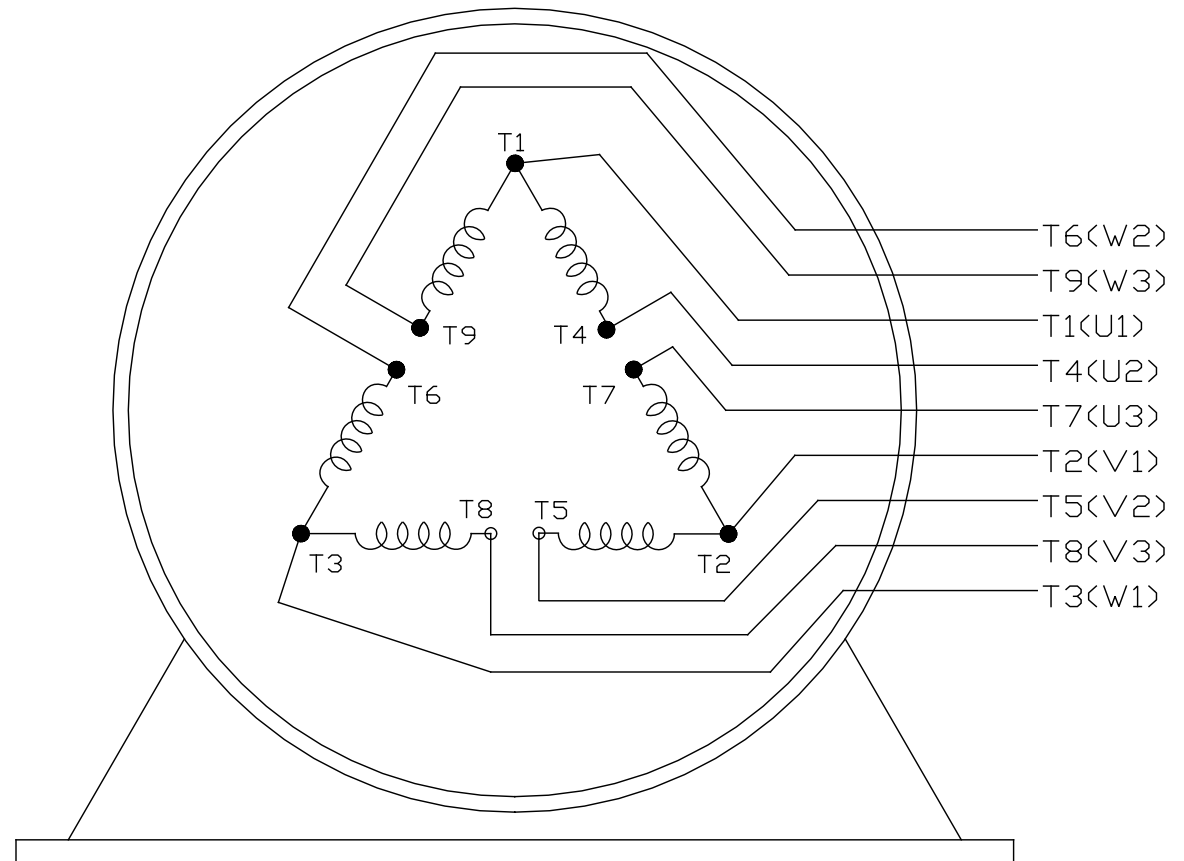
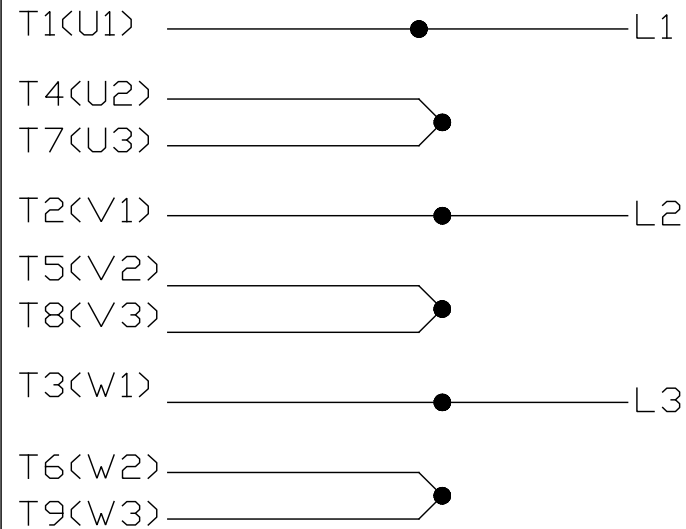


254	29.51	12.80	8.25
256	30.71	13.98	10.00
FRAME	C	BB	2F


TOLERANCES UNLESS SPECIFIED				REGAL-BELOIT CORPORATION		DRAWN L.S.J 05-16-2012	
	DEC.	INCHES				CHK	
	.X	±.1				APPD	
	.XX	±.03				SCALE	1=4
	.XXX	±.005				REF	
	.XXXX	±.0005				FMF	HWADA
NO.	REVISION	BY & DATE	CHK	ANG	±1/2	FINISH	PREV
THIS DRAWING IN DESIGN AND DETAIL IS OUR PROPERTY AND MUST NOT BE USED EXCEPT IN CONNECTION WITH OUR WORK. ALL RIGHTS OF DESIGN AND INVENTION ARE RESERVED. THIS IS AN ELECTRONICALLY GENERATED DOCUMENT - DO NOT SCALE THIS PRINT				RFP	CAD FILE	SS620567	SIZE
				DIST			DRAWING NO.
							B
							SS620567
							REV.

LOW VOLTAGE

EE7308K

HIGH VOLTAGE

VIEW OF TERMINAL END

			TOLERANCES UNLESS SPECIFIED			 REGAL - BELOIT CORPORATION	DRAWN PGK 06-04-1997		
NO.	REVISION	BY & DATE	CHK	ANG	± 7'30"		CHK	ML	06-05-1997
E	CORRECTED IEC MARKINGS ECD-0111208	WGJ 01-23-2017	EMH	DEC.	INCHES	TITLE CONNECTION DIAGRAM DELTA CON. - 3Ø - 9 LEADS MAT'L. FINISH	APPD	GK	06-15-1997
D	RE-DRAWN WITH REGAL LOGO ECD-0110493	WGJ 09-30-2016	EMH	.X	± .1		SCALE		
8	ADDED IEC DESIGNATIONS MU95020	TJW 4/30/2010	MJS	.XX	± .02		REF		
7	REVISED HIGH VOLTAGE L2 WAS L3 CN52600-354	MRB 09-21-1998		.XXX	± .005		FMF		
6	REDRAWN ON CADD	PGK 06-05-1997		.XXXX	± .0005		PREV		
THIS DRAWING IN DESIGN AND DETAIL IS OUR PROPERTY AND MUST NOT BE USED EXCEPT IN CONNECTION WITH OUR WORK ALL RIGHTS OF DESIGN AND INVENTION ARE RESERVED THIS IS AN ELECTRONICALLY GENERATED DOCUMENT - DO NOT SCALE THIS PRINT						RFP	CAD FILE EE7308K		SIZE
						DIST			A
								DRAWING NO.	PAGE OF
								EE7308K	REV.
								E	

CERTIFICATION DATA SHEET

Model#: 256TTFCA6037 AA

WINDING#: CHT25640005 NONE 1

CONN. DIAGRAM: EE7308K

ASSEMBLY: F1/F2 CAPABLE

OUTLINE: SS620567

TYPICAL MOTOR PERFORMANCE DATA

HP	KW	SYNC. RPM	F.L. RPM	FRAME	ENCLOSURE	KVA CODE	DESIGN
20&15	14.9&11.2	1800	1773&1478	256JP	TEFC	G	B

PH	Hz	VOLTS	FL AMPS	START TYPE	DUTY	INSL	S.F	AMB°C	ELEVATION
3	60/50	230/460#190/ 380	48.5/24.2&43. 5/21.8	LINE OR INVERTER	CONTINUOU S	F7	1.15/1.15	40	3300

FULL LOAD EFF: 93&92.4	3/4 LOAD EFF: 93	1/2 LOAD EFF: 91.7	GTD. EFF	ELEC. TYPE	NO LOAD AMPS
FULL LOAD PF: 83.5&81.5	3/4 LOAD PF: 79	1/2 LOAD PF: 69	92.4	SQ CAGE INV RATED	19.4 / 9.7

F.L. TORQUE	LOCKED ROTOR AMPS	L.R. TORQUE	B.D. TORQUE	F.L. RISE°C
59.5 LB-FT	280 / 140	104 LB-FT 175	156 LB-FT 262	60

SOUND PRESSURE @ 3 FT.	SOUND POWER	ROTOR WK^2	MAX. WK^2	SAFE STALL TIME	STARTS /HOUR	APPROX. MOTOR WGT
65 dBA	75 dBA	4 LB-FT^2	125 LB-FT^2	20 SEC.	2	455 LBS.

*** SUPPLEMENTAL INFORMATION ***

DE BRACKET TYPE	ODE BRACKET TYPE	MOUNT TYPE	ORIENTATION	SEVERE DUTY	HAZARDOUS LOCATION	D RIP COVER	SCREENS	PAINT
C-FACE	STANDARD	RIGID	HORIZONTAL	FALSE	NONE	FALSE	NONE	BLUE (ENAMEL)

BEARINGS		GREASE	SHAFT TYPE	SPECIAL DE	SPECIAL ODE	SHAFT MATERIAL	FRAME MATERIAL
DE	OPE						
BALL	BALL	POLYREX EM	JP	NONE	NONE	1045 HOT ROLLED (C-204)	CAST IRON
6309	6209						

THERMO-PROTECTORS				THERMISTORS	CONTROL	SPACE /n HEATERS
THERMOSTATS	PROTECTORS	WDG RTDs	BRG RTDs			
NONE	NOT	NONE	NONE	NONE	FALSE	NONE VOLTS

If Inverter equals NONE, contact factory for further information

* N O T E S *	INVERTER TORQUE: VARIABLE 10:1
	INV. HP SPEED RANGE: NONE
	ENCODER: NONE NONE NONE NONE NONE PPR
	BRAKE: NONE NONE NONE P/N NONE NONE NONE NONE FT-LB NONE V NONE Hz

DATE: 06/21/2017 09:43:41 AM

FORM 3531 REV.3 02/07/99

** Subject to change without notice.

Data Sheet

Date: 6/19/2017

Customer: _____

Attention: _____

Submitted by: FAREEDA DUDEKULA



256TTFCA6037

Submittal

Data @ 460 V

Motor Load Data

Load	0%	25%	50%	75%	100%	115%	125%	LR	
Current (Amps)	9.7	11.3	15.0	19.2	24.0	27.0	29.8	140	
Torque (ft-lb)	0.00	15.0	29.5	44.5	59.5	68.5	75.0	104	
RPM	1800	1792	1787	1780	1770	1,765	1760	0	
Efficiency (%)		86.5	91.7	93.0	93.0	92.4	92.4		
P.F. (%)	5.0	46.5	69.0	79.0	83.0	84.0	85.5	39.0	

Motor Speed Data

	LR	Pull-Up	BD	Rated	Idle					
Speed (RPM)	0	900	1700	1770	1800					
Current (Amps)	140	130	93.0	24.0	9.7					
Torque (ft-lb)	104	88.0	156	59.5	0.00					
<div><div>Efficiency (%)</div><div>P.F. (%)</div><div>Current (Amps)</div></div> <div>EFFICIENCY (%)</div> <div>P.F. (%)</div> <div>CURRENT (AMPS)</div> <div>LOAD</div>						Information Block				
						HP		20.0		
						Sync. RPM		1800		
						Frame		256		
						Enclosure		TEFC		
						Construction		TFC		
						Voltage		230/460#190/3Ø V		
						Frequency		60 Hz		
						Design		B		
						LR Code letter		G		
						Service Factor		1.15		
						Temp Rise @ FL		60 ° C		
						Duty		CONT		
						Ambient		40 ° C		
						Elevation		1,000 feet		
						Rotor/Shaft wk²		4.0 Lb-Ft²		
						Ref Wdg		CHT25640005 NONE		
Sound Pressure @ 1M		65 dBA								
VFD Rating		VARIABLE 10:1								
Outline Dwg		SS620567								
Conn. Diag		EE7308K								
Additional Specifications:										
0										
0										
EQUIV CKT (OHMS / PHASE)										
R1		R2		X1		X2		Xm		
0.2310		0.1800		0.7530		1.3770		26.9800		

Speed -Torque Curve

