

# PRODUCT INFORMATION PACKET

**marathon®**  
Motors

Model No: 256TTFCA6028

Catalog No: GT1225

Globetrotter® General Purpose Motor, 20 & 15 HP, 3 Ph, 60 & 50 Hz, 230/460 & 190/380 V,  
1800 & 1500 RPM, 256TC Frame, TEFC



Regal and Marathon are trademarks of Regal Rexnord Corporation or one of its affiliated companies.

©2023 Regal Rexnord Corporation, All Rights Reserved. MC017097E

**RegalRexnord**

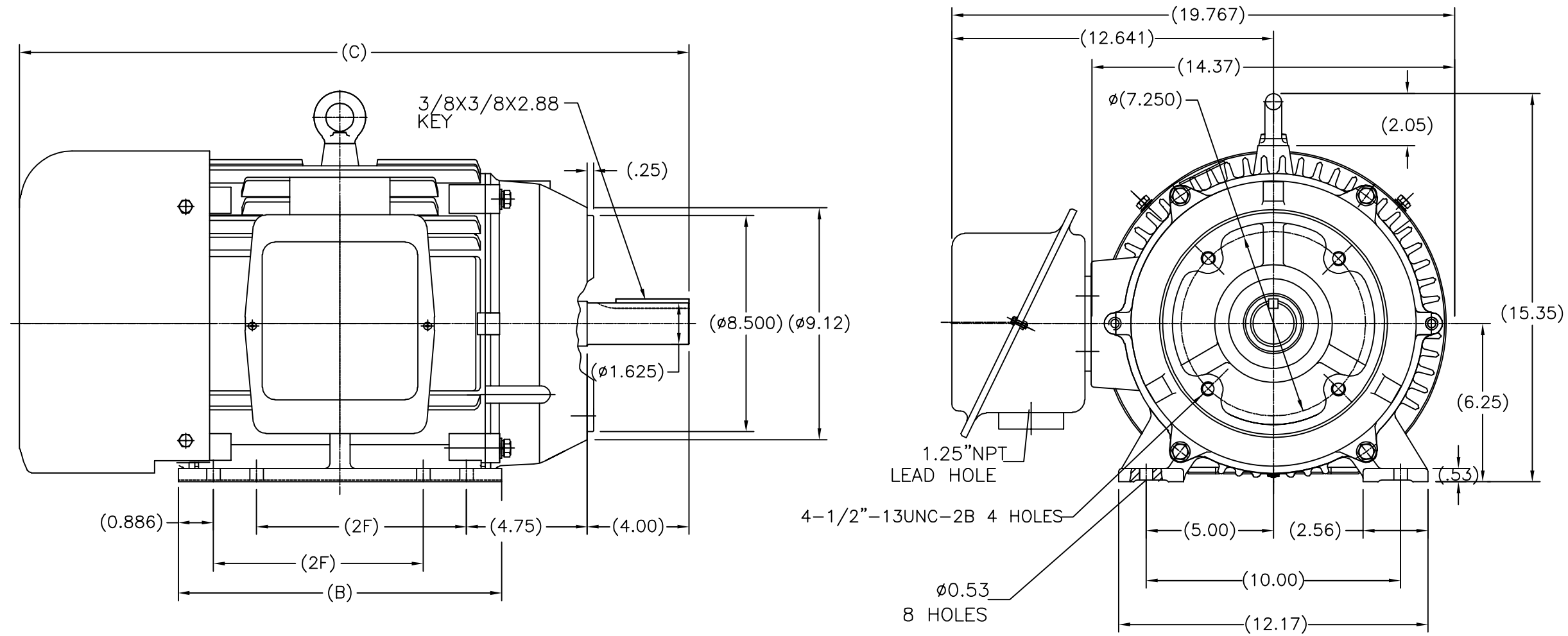
### Nameplate Specifications

Phase	3	Output HP	20 & 15 Hp
Output KW	14.9 & 11.2 kW	Voltage	230/460 & 190/380 V
Speed	1768 & 1475 rpm	Service Factor	1.15 & 1.0
Frame	256TC	Enclosure	Totally Enclosed Fan Cooled
Thermal Protection	No Protection	Efficiency	93 & 92.4 %
Ambient Temperature	40 °C	Frequency	60 & 50 Hz
Current	49/24.5 & 45/22.5 A	Power Factor	82
Duty	Continuous	Insulation Class	F
Design Code	B	KVA Code	G
Drive End Bearing Size	6309	Opp Drive End Bearing Size	6209
UL	Recognized	CSA	Y
CE	Y	IP Code	43
Number of Speeds	1		


### Technical Specifications

Electrical Type	Squirrel Cage Induction Run	Starting Method	Across The Line
Poles	4	Rotation	Reversible
Resistance Main	.42 Ohms	Mounting	Rigid Base
Motor Orientation	Horizontal	Drive End Bearing	Ball
Opp Drive End Bearing	Ball	Frame Material	Cast Iron
Shaft Type	T	Overall Length	27.80 in
Shaft Diameter	1.625 in	Shaft Extension	4 in
Assembly/Box Mounting	F1/F2 Capable		
Outline Drawing	SS620298-256	Connection Drawing	A-EE7308K

SS620298

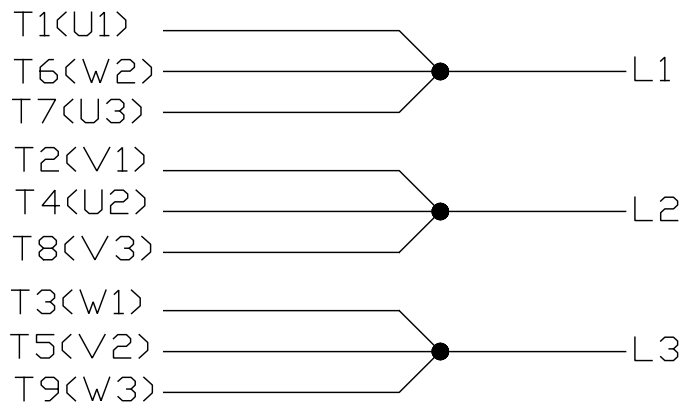


254	26.60	12.717	8.25
256	27.80	13.898	10.00
FRAME	C	B	2F

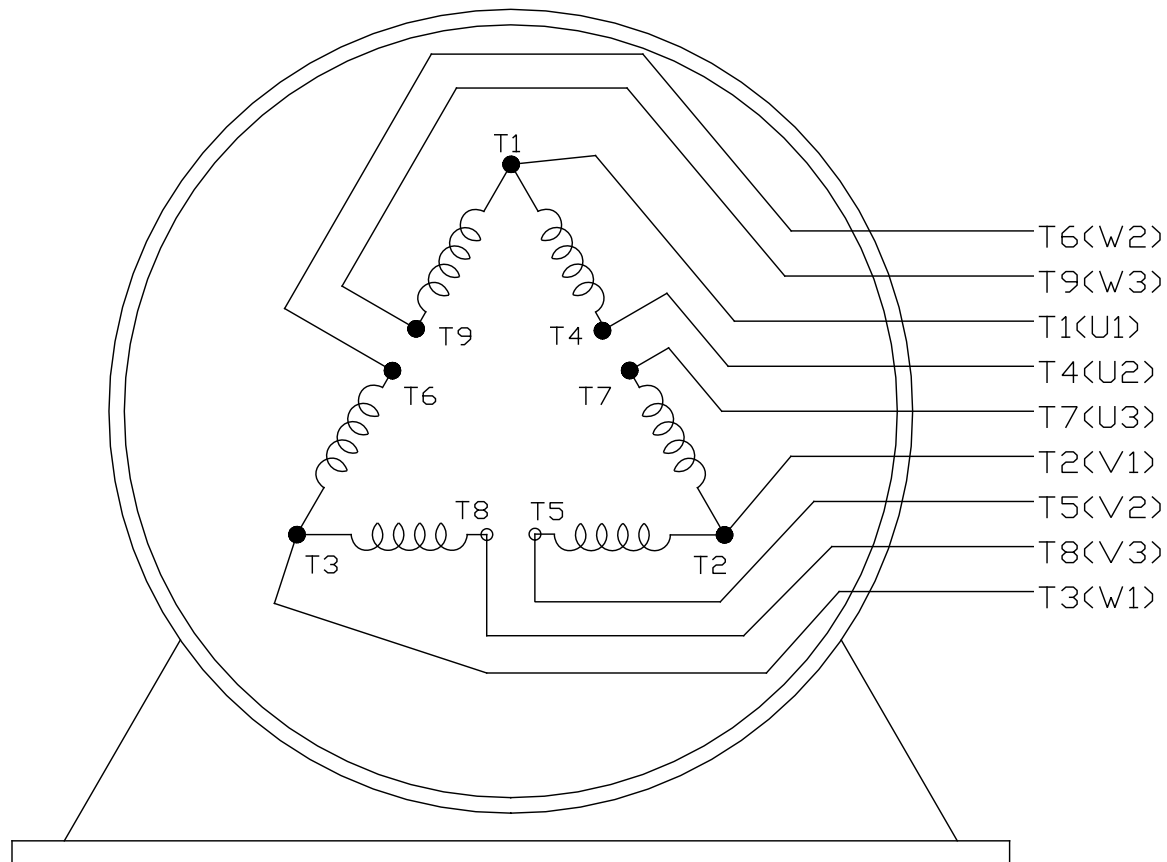
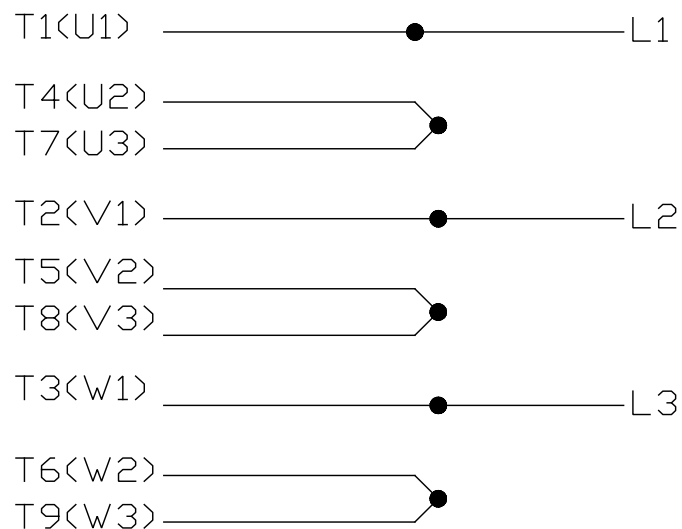
		TOLERANCES UNLESS SPECIFIED		 <b>REGAL-BELOIT CORPORATION</b>		DRAWN ZYH 04-22-2012	
		DEC.	INCHES			CHK HZJ 04-22-2012	
		.X	±.1	TITLE OUTLINE 254/256TC FR-TEFC-CAST IRON		APPD WGH 04-22-2012	
		.XX	±.03			SCALE 1=4	
		.XXX	±.005			REF	
D	UPDATED DWG SENT FROM CHINA ECO-0074012	WGJ 5-6-2015	EMH .XXXX	±.0005	MAT'L.	FMF HWADA	
NO.	REVISION	BY & DATE	CHK	ANG	±1/2	FINISH	PREV
THIS DRAWING IN DESIGN AND DETAIL IS OUR PROPERTY AND MUST NOT BE USED EXCEPT IN CONNECTION WITH OUR WORK ALL RIGHTS OF DESIGN AND INVENTION ARE RESERVED THIS IS AN ELECTRONICALLY GENERATED DOCUMENT - DO NOT SCALE THIS PRINT			RFP	CAD FILE	SS620298	SIZE	DRAWING NO.
			DIST			B	SS620298
							REV. D

LOW VOLTAGE


EE7308K



## HIGH VOLTAGE



VIEW OF TERMINAL END

				TOLERANCES UNLESS SPECIFIED		 <b>REGAL - BELOIT CORPORATION</b>	DRAWN PGK 06-04-1997						
E	CORRECTED IEC MARKINGS	ECO-0111208	WGJ 01-23-2017	EMH	DEC.		INCHES	CHK	ML	06-05-1997			
D	RE-DRAWN WITH REGAL LOGO	ECO-0110493	WGJ 09-30-2016	EMH	.X		±.1	APPD	GK	06-15-1997			
8	ADDED IEC DESIGNATIONS	MU95020	TJW 4/30/2010	MJS	.XX		±.02	TITLE		SCALE			
7	REVISD HIGH VOLTAGE L2 WAS L3	CN52600-354	MRB 09-21-1998		.XXX		±.005	CONNECTION DIAGRAM DELTA CON. - 3Ø - 9 LEADS		REF			
6	REDRAWN ON CADD	PGK 06-05-1997			.XXXX	±.0005	MAT'L.		FMF				
NO.	REVISION	BY & DATE	CHK	ANG	± 7'30"		FINISH		PREV				
THIS DRAWING IN DESIGN AND DETAIL IS OUR PROPERTY AND MUST NOT BE USED EXCEPT IN CONNECTION WITH OUR WORK ALL RIGHTS OF DESIGN AND INVENTION ARE RESERVED THIS IS AN ELECTRONICALLY GENERATED DOCUMENT - DO NOT SCALE THIS PRINT				RFP			CAD FILE EE7308K		SIZE	DRAWING NO.	PAGE	OF	REV
				DIST					A	EE7308K			

## CERTIFICATION DATA SHEET

Model#: 256TTFCA6028 AA

WINDING#: CHT25640001 NONE 1

CONN. DIAGRAM: A-EE7308K

ASSEMBLY: F1/F2 CAPABLE

OUTLINE: B-SS620298

## TYPICAL MOTOR PERFORMANCE DATA

HP	KW	SYNC. RPM	F.L. RPM	FRAME	ENCLOSURE	KVA CODE	DESIGN
20&15	14.9&11.2	1800	1768&1475	256TC	TEFC	G	B

PH	Hz	VOLTS	FL AMPS	START TYPE	DUTY	INSL	S.F	AMB°C	ELEVATION
3	60/50	230/460#190/ 380	49/24.5&45/22 .5	ACROSS THE LINE	CONTINUOU S	F7	1.15/1.0	40	3300

FULL LOAD EFF: 93&92.4	3/4 LOAD EFF: 93	1/2 LOAD EFF: 92.4	GTD. EFF	ELEC. TYPE	NO LOAD AMPS
FULL LOAD PF: 82&82.5	3/4 LOAD PF: 78	1/2 LOAD PF: 68	92.4	SQ CAGE IND RUN	19.6 / 9.8

F.L. TORQUE	LOCKED ROTOR AMPS	L.R. TORQUE	B.D. TORQUE	F.L. RISE°C
60 LB-FT	276 / 138	116 LB-FT 192	165 LB-FT 278	60

SOUND PRESSURE @ 3 FT.	SOUND POWER	ROTOR WK^2	MAX. WK^2	SAFE STALL TIME	STARTS /HOUR	APPROX. MOTOR WGT
65 dBA	75 dBA	3.2 LB-FT^2	125 LB-FT^2	20 SEC.	2	380 LBS.

## \*\*\* SUPPLEMENTAL INFORMATION \*\*\*

DE BRACKET TYPE	ODE BRACKET TYPE	MOUNT TYPE	ORIENTATION	SEVERE DUTY	HAZARDOUS LOCATION	D RIP COVER	SCREENS	PAINT
C-FACE	STANDARD	RIGID	HORIZONTAL	FALSE	NONE	FALSE	NONE	BLUE (ENAMEL)

BEARINGS		GREASE	SHAFT TYPE	SPECIAL DE	SPECIAL ODE	SHAFT MATERIAL	FRAME MATERIAL
DE	OPE						
BALL	BALL	POLYREX EM	T	NONE	NONE	1045 HOT ROLLED (C-204)	CAST IRON
6309	6209						

THERMO-PROTECTORS				THERMISTORS	CONTROL	SPACE /n HEATERS
THERMOSTATS	PROTECTORS	WDG RTDs	BRG RTDs			
NONE	NOT	NONE	NONE	NONE	FALSE	NONE VOLTS

If Inverter equals NONE, contact factory for further  
information

\*  
N  
O  
T  
E  
S  
\*

INVERTER TORQUE: NONE
INV. HP SPEED RANGE: NONE
ENCODER: NONE
NONE NONE
NONE NONE PPR
BRAKE: NONE NONE
NONE P/N NONE
NONE NONE
NONE FT-LB NONE V NONE Hz

DATE: 06/21/2017 10:20:57 AM

FORM 3531 REV.3 02/07/99

\*\* Subject to change without notice.

## Data Sheet

Date: 19-06-2017

Customer:

Attention:

Submitted by: FAREEDA DUDEKULA



256TTFCA6028

Submittal

Data @ 460 V

## Motor Load Data

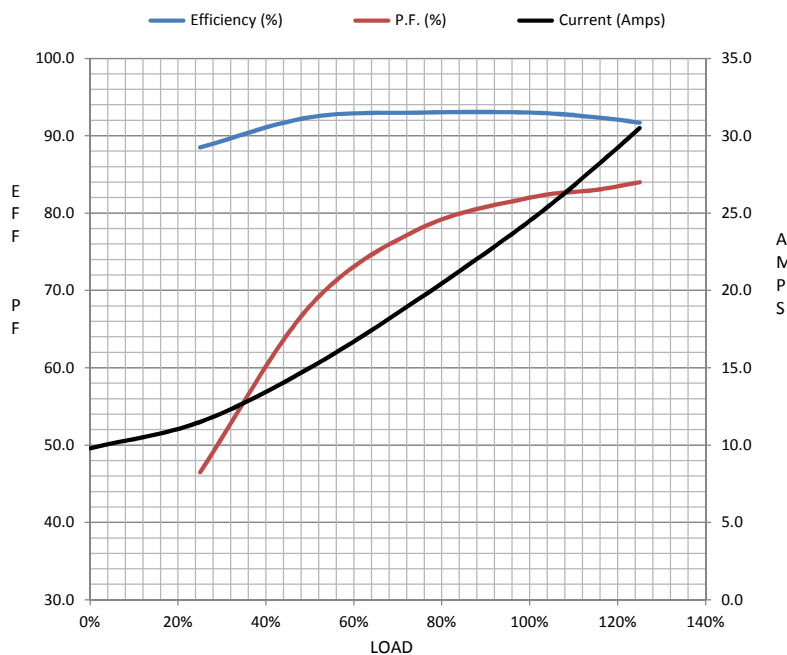
Load	0%	25%	50%	75%	100%	115%	125%	LR	
Current (Amps)	9.8	11.5	15.0	19.5	24.5	28.0	30.5	138	
Torque (ft-lb)	0.00	15.0	29.5	44.5	60.0	68.6	75.0	116	
RPM	1800	1792	1785	1778	1768	1,765	1760	0	
Efficiency (%)		88.5	92.4	93.0	93.0	92.4	91.7		
P.F. (%)	5.5	46.5	68.0	78.0	82.0	83.0	84.0	39.0	

## Motor Speed Data

	LR	Pull-Up	BD	Rated	Idle
Speed (RPM)	0	900	1650	1768	1800
Current (Amps)	138	120	87.0	24.5	9.8
Torque (ft-lb)	116	95.0	165	60.0	0.00

## Information Block

HP	20.0			
Sync. RPM	1800			
Frame	256			
Enclosure	TEFC			
Construction	TFC			
Voltage	230/460#190/38(V			
Frequency	60 Hz			
Design	B			
LR Code letter	G			
Service Factor	1.15			
Temp Rise @ FL	60 ° C			
Duty	CONT			
Ambient	40 ° C			
Elevation	1,000 feet			
Rotor/Shaft wk²	3.2 Lb-Ft²			
Ref Wdg	CHT25640001 NONE			
Sound Pressure @ 1M	65 dBA			
VFD Rating	NONE			
Outline Dwg	B-SS620298			
Conn. Diag	A-EE7308K			
Additional Specifications:				
0				
365THFS8036				
EQUIV CKT (OHMS / PHASE)				
R1	R2	X1	X2	Xm
0.2770	0.2060	0.8660	1.4770	28.2580



## Speed -Torque Curve

