

PRODUCT INFORMATION PACKET

marathon®
Motors

Model No: 256TTFCA6012

Catalog No: GT3424

Globetrotter® Close-Coupled Pump Motor, 20 & 15 HP, 3 Ph, 60 & 50 Hz, 230/460 & 190/380 V,
3600 & 3000 RPM, 256JP Frame, TEFC



Regal and Marathon are trademarks of Regal Rexnord Corporation or one of its affiliated companies.

©2023 Regal Rexnord Corporation, All Rights Reserved. MC017097E

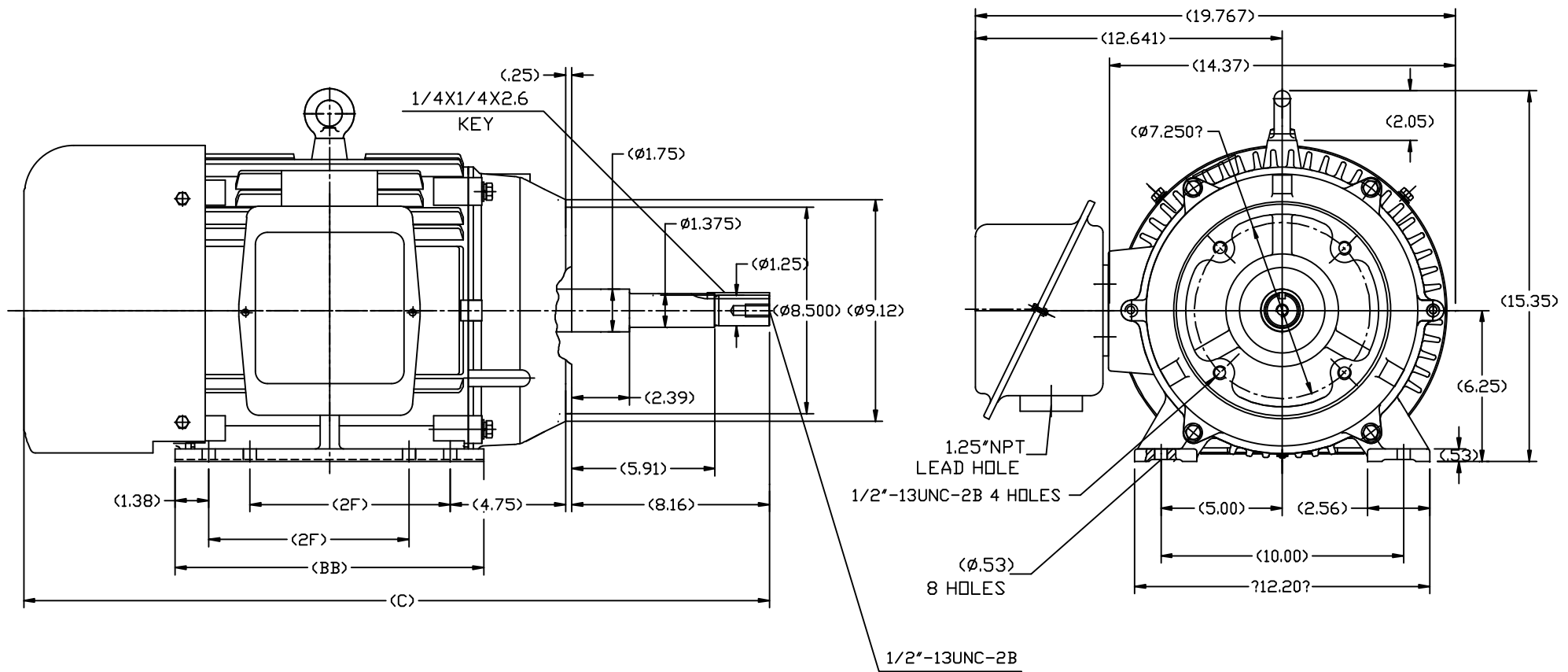
RegalRexnord

Nameplate Specifications


Phase	3	Output HP	20 & 15 Hp
Output KW	14.9 & 11.2 kW	Voltage	230/460 & 190/380 V
Speed	3545 & 2955 rpm	Service Factor	1.15 & 1.15
Frame	256JP	Enclosure	Totally Enclosed Fan Cooled
Thermal Protection	No Protection	Efficiency	91 & 90.2 %
Ambient Temperature	40 °C	Frequency	60 & 50 Hz
Current	46/23 & 41.5/20.7 A	Power Factor	89.5
Duty	Continuous	Insulation Class	F
Design Code	B	KVA Code	G
Drive End Bearing Size	6209	Opp Drive End Bearing Size	6209
UL	Recognized	CSA	Y
CE	Y	IP Code	43
Number of Speeds	1		

Technical Specifications

Electrical Type	Squirrel Cage Inverter Rated	Starting Method	Line Or Inverter
Poles	2	Rotation	Reversible
Resistance Main	.366 Ohms	Mounting	Rigid Base
Motor Orientation	Horizontal	Drive End Bearing	Ball
Opp Drive End Bearing	Ball	Frame Material	Cast Iron
Shaft Type	JP	Overall Length	30.71 in
Frame Length	11.73 in	Shaft Diameter	1.250 in
Shaft Extension	8.16 in	Assembly/Box Mounting	F1/F2 CAPABLE
Outline Drawing	SS620567-256	Connection Drawing	EE7308K



254	29.51	12.80	8.25
256	30.71	13.98	10.00
FRAME	C	BB	2F

		TOLERANCES UNLESS SPECIFIED		 REGAL-BELOIT CORPORATION	DRAWN L.S.J 05-16-2012	
DEC.	INCHES				CHK	
.X	±.1				APPD	
.XX	±.03				SCALE	1=4
.XXX	±.005				REF	
.XXXX	±.0005			MAT'L	FMF	HWADA
NO.	REVISION	BY & DATE	CHK	ANG	±1/2	FINISH
THIS DRAWING IN DESIGN AND DETAIL IS OUR PROPERTY AND MUST NOT BE USED EXCEPT IN CONNECTION WITH OUR WORK. ALL RIGHTS OF DESIGN AND INVENTION ARE RESERVED. THIS IS AN ELECTRONICALLY GENERATED DOCUMENT - DO NOT SCALE THIS PRINT				RFP	CAD FILE	SS620567
				DIST	SIZE	DRAWING NO.
					B	SS620567
						REV.

LOW VOLTAGEHIGH VOLTAGE

VIEW OF TERMINAL END

			TOLERANCES UNLESS SPECIFIED			 REGAL - BELOIT CORPORATION	DRAWN PGK 06-04-1997		
NO.	REVISION	BY & DATE	CHK	ANG	± 7'30"		CHK	ML	06-05-1997
E	CORRECTED IEC MARKINGS ECD-0111208	WGJ 01-23-2017	EMH	DEC.	INCHES				
D	RE-DRAWN WITH REGAL LOGO ECD-0110493	WGJ 09-30-2016	EMH	.X	± .1				
8	ADDED IEC DESIGNATIONS MU95020	TJW 4/30/2010	MJS	.XX	± .02	TITLE	CONNECTION DIAGRAM	SCALE	
7	REVISED HIGH VOLTAGE L2 WAS L3 CN52600-354	MRB 09-21-1998		.XXX	± .005		DELTA CON. - 3Ø - 9 LEADS	REF	
6	REDRAWN ON CADD	PGK 06-05-1997		.XXXX	± .0005	MAT'L.		FMF	
						FINISH		PREV	
THIS DRAWING IN DESIGN AND DETAIL IS OUR PROPERTY AND MUST NOT BE USED EXCEPT IN CONNECTION WITH OUR WORK ALL RIGHTS OF DESIGN AND INVENTION ARE RESERVED THIS IS AN ELECTRONICALLY GENERATED DOCUMENT - DO NOT SCALE THIS PRINT						RFP	CAD FILE EE7308K	SIZE	DRAWING NO. PAGE OF
						DIST		A	EE7308K
									REV. E

CERTIFICATION DATA SHEET

Model#: 256TTFCA6012 AA
 CONN. DIAGRAM: EE7308K
 OUTLINE: SS620567

WINDING#: CHT25620003 NONE 1
 ASSEMBLY: F1/F2 CAPABLE

TYPICAL MOTOR PERFORMANCE DATA

HP	KW	SYNC. RPM	F.L. RPM	FRAME	ENCLOSURE	KVA CODE	DESIGN
20&15	14.9&11.2	3600	3545&2955	256JP	TEFC	G	B

PH	Hz	VOLTS	FL AMPS	START TYPE	DUTY	INSL	S.F	AMB°C	ELEVATION
3	60/50	230/460#190/ 380	46/23&41.5/20 .7	LINE OR INVERTER	CONTINUOU S	F7	1.15/1.15	40	3300

FULL LOAD EFF: 91&90.2	3/4 LOAD EFF: 91	1/2 LOAD EFF: 89.5	GTD. EFF	ELEC. TYPE	NO LOAD AMPS
FULL LOAD PF: 89.5&87.5	3/4 LOAD PF: 87.5	1/2 LOAD PF: 82	90.2	SQ CAGE INV RATED	12.6 / 6.3

F.L. TORQUE	LOCKED ROTOR AMPS	L.R. TORQUE	B.D. TORQUE	F.L. RISE°C
29.6 LB-FT	280 / 140	54 LB-FT 182	75 LB-FT 254	50

SOUND PRESSURE @ 3 FT.	SOUND POWER	ROTOR WK^2	MAX. WK^2	SAFE STALL TIME	STARTS /HOUR	APPROX. MOTOR WGT
72 dBA	82 dBA	1.65 LB-FT^2	- LB-FT^2	20 SEC.	2	435 LBS.

*** SUPPLEMENTAL INFORMATION ***

DE BRACKET TYPE	ODE BRACKET TYPE	MOUNT TYPE	ORIENTATION	SEVERE DUTY	HAZARDOUS LOCATION	DRIP COVER	SCREENS	PAINT
C-FACE	STANDARD	RIGID	HORIZONTAL	FALSE	NONE	FALSE	NONE	BLUE (ENAMEL)

BEARINGS		GREASE	SHAFT TYPE	SPECIAL DE	SPECIAL ODE	SHAFT MATERIAL	FRAME MATERIAL
DE	OPE						
BALL	BALL	POLYREX EM	JP	NONE	NONE	1045 HOT ROLLED (C-204)	CAST IRON
6209	6209						

THERMO-PROTECTORS				THERMISTORS	CONTROL	SPACE /n HEATERS
THERMOSTATS	PROTECTORS	WDG RTDs	BRG RTDs			
NONE	NOT	NONE	NONE	NONE	FALSE	NONE VOLTS

If Inverter equals NONE, contact factory for further information

* N O T E S *	INVERTER TORQUE: VARIABLE 10:1
	INV. HP SPEED RANGE: NONE
	ENCODER: NONE NONE NONE NONE NONE PPR
	BRAKE: NONE NONE NONE P/N NONE NONE NONE NONE FT-LB NONE V NONE Hz

DATE: 06/23/2017 06:49:38 AM
 FORM 3531 REV.3 02/07/99
 ** Subject to change without notice.

Data Sheet

Date: 6/19/2017

Customer: _____

Attention: _____

Submitted by: FAREEDA DUDEKULA



256TTFCA6012

Submittal

Data @ 460 V

Motor Load Data

Load	0%	25%	50%	75%	100%	115%	125%	LR	
Current (Amps)	6.3	8.6	12.7	17.5	23.2	26.8	29.0	140	
Torque (ft-lb)	0.00	7.3	14.7	22.0	29.6	34.0	37.0	54.0	
RPM	3600	3585	3575	3565	3550	3,545	3530	0	
Efficiency (%)		84.5	89.5	91.0	91.0	91.0	90.2		
P.F. (%)	11.0	64.5	82.0	87.5	89.0	90.0	90.0	35.5	

Motor Speed Data

	LR	Pull-Up	BD	Rated	Idle	Information Block				
Speed (RPM)	0	1800	3450	3550	3600	HP	20.0			
Current (Amps)	140	126	85.0	23.2	6.3	Sync. RPM	3600			
Torque (ft-lb)	54.0	46.0	75.0	29.6	0.00	Frame	256			
<div><div>Efficiency (%)</div><div>P.F. (%)</div><div>Current (Amps)</div></div> <div>EFFICIENCY (%)</div> <div>P.F. (%)</div> <div>CURRENT (AMPS)</div> <div>LOAD</div>						Enclosure	TEFC			
						Construction	TFC			
						Voltage	30/460#190/381V			
						Frequency	60 Hz			
						Design	B			
						LR Code letter	G			
						Service Factor	1.15			
						Temp Rise @ FL	50 ° C			
						Duty	CONT			
						Ambient	40 ° C			
						Elevation	1,000 feet			
						Rotor/Shaft wk ²	1.65 Lb-Ft ²			
						Ref Wdg	CHT25620003 NONE			
						Sound Pressure @ 1M	72 dBA			
						VFD Rating	VARIABLE 10:1			
						Outline Dwg	SS620567			
						Conn. Diag	EE7308K			
Additional Specifications:										
0										
0										
EQUIV CKT (OHMS / PHASE)										
R1		R2		X1		X2		Xm		
0.2500		0.1780		0.9610		1.2500		43.4520		

Speed -Torque Curve

