

PRODUCT INFORMATION PACKET



Model No: 256TTEN17202
Catalog No: 256TTEN17202
15/7.5.3600/1800,EPNV,256T,3/60/460

Regal and Marathon are trademarks of Regal Rexnord Corporation or one of its affiliated companies.
©2024 Regal Rexnord Corporation, All Rights Reserved. MC017097E



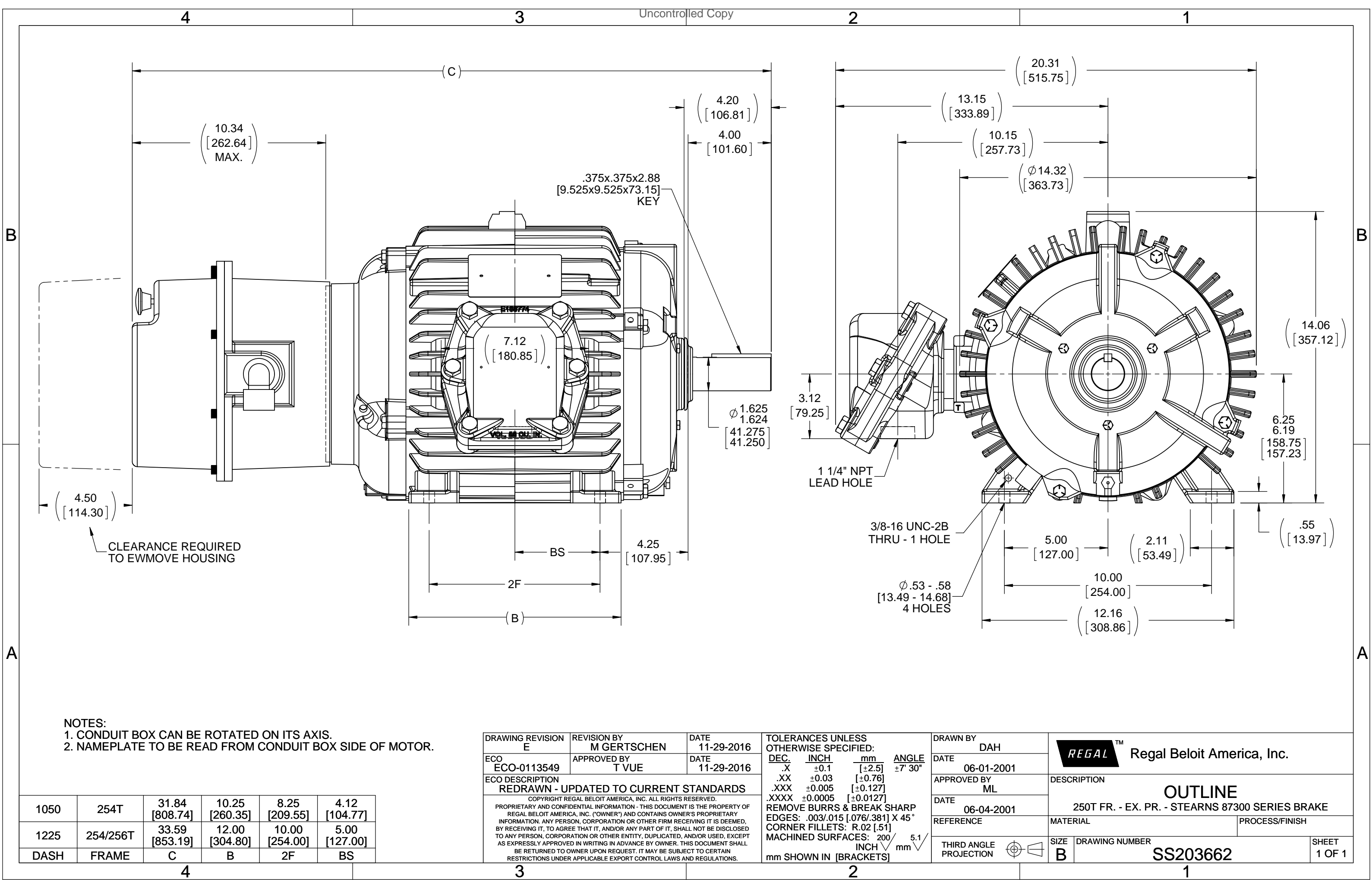
Nameplate Specifications

Phase	3	Output HP	15,7.50 Hp
Output KW	11.2 kW	Voltage	460 V
Speed	3540,1780 rpm	Service Factor	1
Frame	256T	Enclosure	Explosion Proof Non Ventilated
Thermal Protection	No Protection	Efficiency	92.4 %
Ambient Temperature	40 °C	Frequency	60 Hz
Current	17,12.7 A	Power Factor	89.5
Duty	Continuous	Insulation Class	F
Design Code	1CT	KVA Code	J
Drive End Bearing Size	309	Opp Drive End Bearing Size	309
UL	No	CSA	N
CE	N	IP Code	54
Number of Speeds	2	Hazardous Location	EXP PROOF CL I GR D T2A

Technical Specifications

Electrical Type	Squirrel Cage Induction Run	Starting Method	Across The Line
Poles	2/4	Rotation	Reversible
Resistance Main	.5 Ohms	Mounting	Rigid Base
Motor Orientation	Horizontal	Drive End Bearing	Ball
Opp Drive End Bearing	Ball	Frame Material	Cast Iron
Shaft Type	T	Assembly/Box Mounting	F1/F2 CAPABLE
Outline Drawing	B-SS203662-1225	Connection Drawing	A-EE7324

This is an uncontrolled document once printed or downloaded and is subject to change without notice. Date Created:09/07/2024



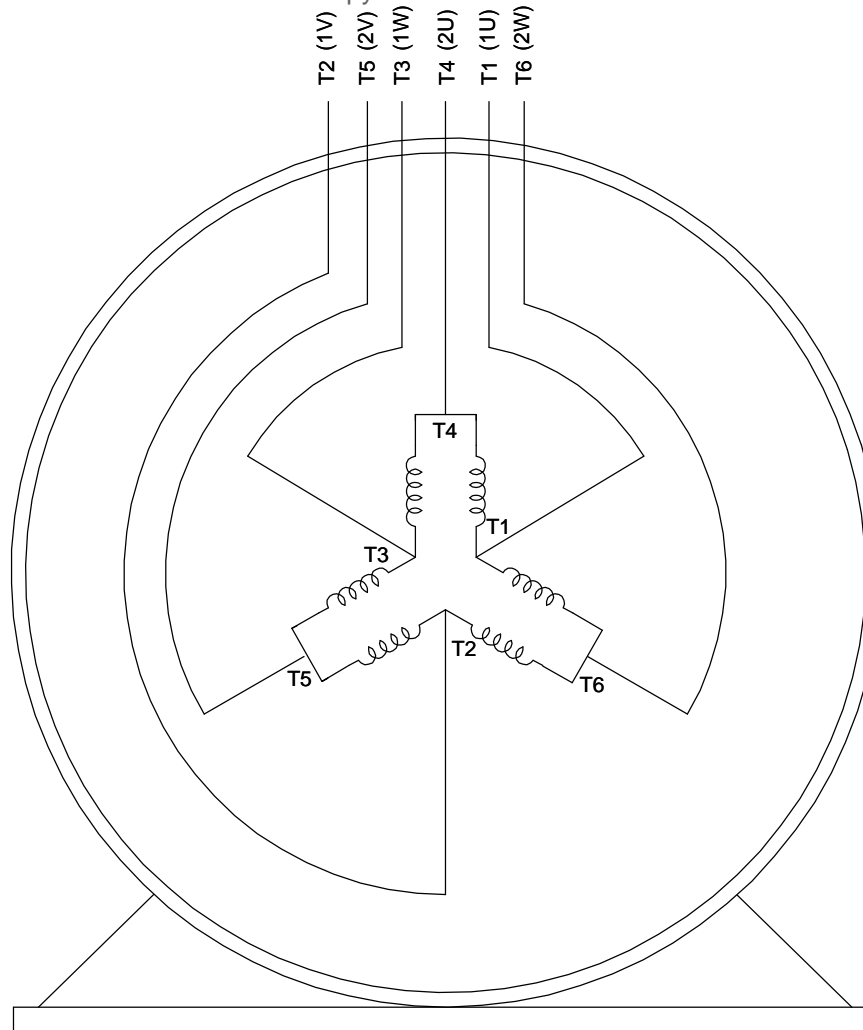
Uncontrolled Copy

LOW SPEED:


T1 (1U) ————○——— L.1
 T2 (1V) ————○——— L.2
 T3 (1W) ————○——— L.3
 T4 (2U) ————○———
 T5 (2V) ————○———
 T6 (2W) ————○———

HIGH SPEED:

T4 (2U) ————○——— L.1
 T5 (2V) ————○——— L.2
 T6 (2W) ————○——— L.3
 T1 (1U) ————
 T2 (1V) ————
 T3 (1W) ————



VIEW OF TERMINAL END

DRAWING REVISION N	REVISION BY TRK	DATE 10-24-2017		DRAWN BY CAV	 Regal Beloit America, Inc.			
ECO ECO-0133089	APPROVED BY MH	DATE 10-24-2017		DATE 05-12-2000				
ECO DESCRIPTION UPDATED TO CURRENT STANDARDS				APPROVED BY GK	DESCRIPTION CONNECTION DIAGRAM 3Ø 2 SPD. 1 WDG. - C.T. - SGL. VOLT			
<p>COPYRIGHT REGAL BELOIT AMERICA, INC. ALL RIGHTS RESERVED. PROPRIETARY AND CONFIDENTIAL INFORMATION - THIS DOCUMENT IS THE PROPERTY OF REGAL BELOIT AMERICA, INC. ("OWNER") AND CONTAINS OWNER'S PROPRIETARY INFORMATION. ANY PERSON, CORPORATION OR OTHER FIRM RECEIVING IT IS DEEMED, BY RECEIVING IT, TO AGREE THAT IT, AND/OR ANY PART OF IT, SHALL NOT BE DISCLOSED TO ANY PERSON, CORPORATION OR OTHER ENTITY, DUPLICATED, AND/OR USED, EXCEPT AS EXPRESSLY APPROVED IN WRITING IN ADVANCE BY OWNER. THIS DOCUMENT SHALL BE RETURNED TO OWNER UPON REQUEST. IT MAY BE SUBJECT TO CERTAIN RESTRICTIONS UNDER APPLICABLE EXPORT CONTROL LAWS AND REGULATIONS.</p>				DATE 05-15-2000				
				REFERENCE	MATERIAL		PROCESS/FINISH	
							THIRD ANGLE PROJECTION	