

PRODUCT INFORMATION PACKET



Model No: 256TTDX4329

Catalog No: E199

20 HP Close-Coupled Pump Motor, 3 phase, 1800 RPM, 200 V, 256JMV Frame, ODP
Close-Coupled Pump Motors

Regal and Marathon are trademarks of Regal Rexnord Corporation or one of its affiliated companies.
©2021 Regal Rexnord Corporation, All Rights Reserved. MC017097E

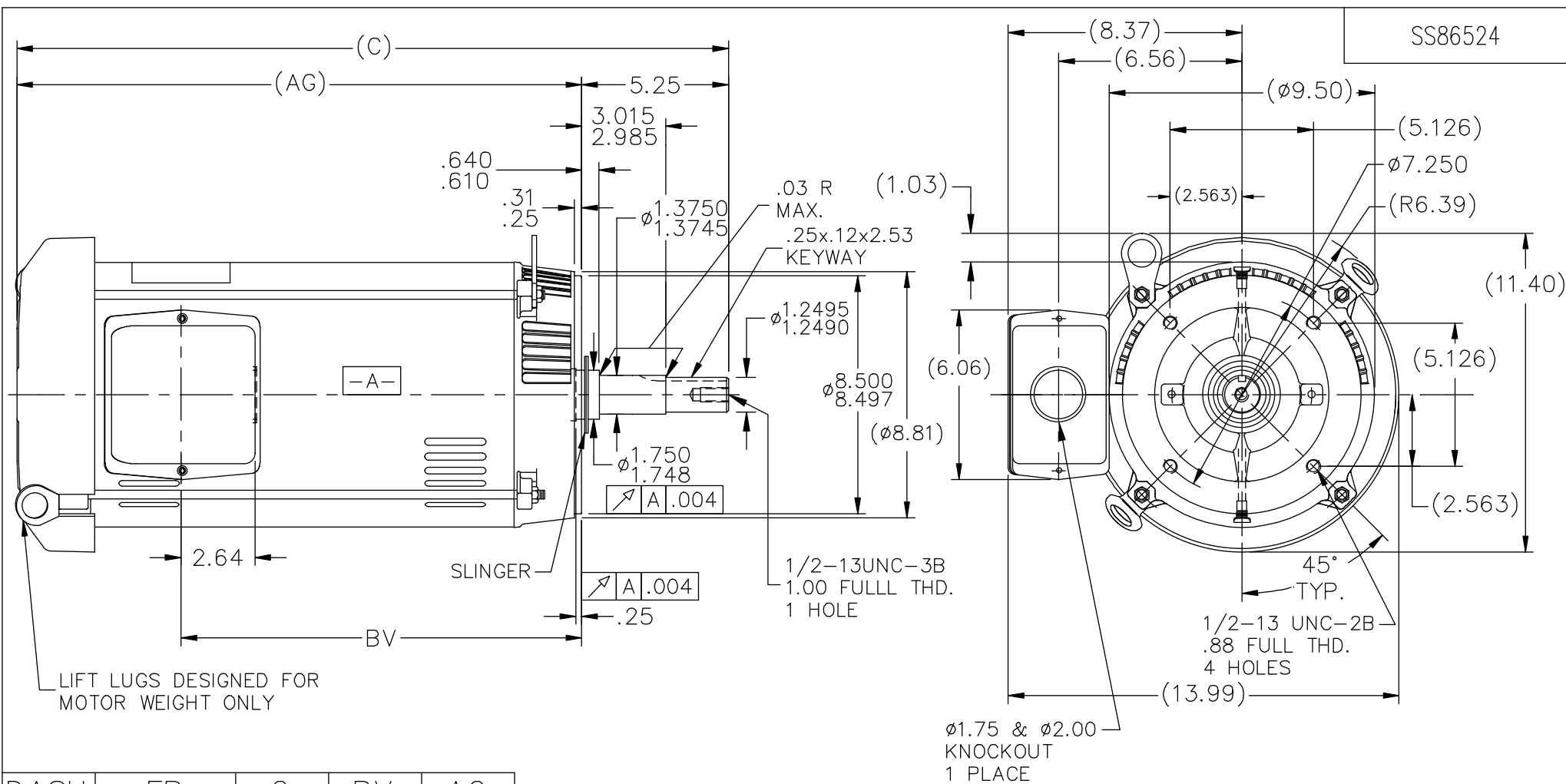


Nameplate Specifications

Output HP	20 Hp	Output KW	14.9 kW
Frequency	60 Hz	Voltage	200 V
Current	60.0 A	Speed	1760 rpm
Service Factor	1.15	Phase	3
Efficiency	91 %	Power Factor	79.3
Duty	Continuous	Insulation Class	B
Design Code	B	KVA Code	H
Frame	256JMV	Enclosure	Drip Proof
Thermal Protection	No	Ambient Temperature	40 °C
Drive End Bearing Size	6309	Opp Drive End Bearing Size	6208
UL	Recognized	CSA	Y
CE	Y	IP Code	12
Number of Speeds	1		

Technical Specifications

Electrical Type	Squirrel Cage Induction Run	Starting Method	Across The Line
Poles	4	Rotation	Reversible
Resistance Main	.428 Ohms	Mounting	Round
Motor Orientation	Shaft Down	Drive End Bearing	Ball
Opp Drive End Bearing	Ball	Frame Material	Rolled Steel
Shaft Type	JM	Overall Length	25.45 in
Frame Length	15.15 in	Shaft Diameter	1.250 in
Shaft Extension	5.28 in	Assembly/Box Mounting	F1/F2 Capable
Outline Drawing	A-SS86524-1515	Connection Drawing	A-EE7300



DASH	FR.	C	BV	AG
1340	254JM	23.70	12.68	18.45
1515	254/256JM	25.45	14.43	20.20
1545	254/256JM	25.75	14.73	20.50

- NOTES:
- NAMEPLATE TO BE READ FROM SHAFT EXT. END OF MOTOR.
 - BOX CAN BE MOUNTED IN 90° STEPS.

11	ADDED ITEM #1545(256TTDX4041)	PVR 07/11/2013	JD	TOLERANCES UNLESS SPECIFIED		DRAWN DJK 10-29-1993
10	REVISED INTERNAL THREAD LENGTH ON SHAFT FROM 1.25 TO 1.00 ECN 16312	MSG 5/24/2010	ML	DEC. INCHES		CHK ML 11-01-1993
9	UPDATED DRAWING	TJW 04/27/2007		.XX ±.03		APPD DRN 11-01-1993
8	REDRAWN IN AUTOCAD	TAT 07-06-2004		.XXX ±.005		SCALE 3=16
7	REVISED DIM. 2.70 TO 2.64 CN 29200-185	CAV 02-24-2000		.XXXX ±.0005	MAT'L.	REF
NO.	REVISION	BY & DATE	CHK	ANG ±7'30"	FINISH	PREV
THIS DRAWING IN DESIGN AND DETAIL IS OUR PROPERTY AND MUST NOT BE USED EXCEPT IN CONNECTION WITH OUR WORK ALL RIGHTS OF DESIGN AND INVENTION ARE RESERVED THIS IS AN ELECTRONICALLY GENERATED DOCUMENT - DO NOT SCALE THIS PRINT				RFP	CAD FILE ss86524	SIZE A
				DIST LB		DRAWING NO. SS86524
						PAGE OF 11

THREE PHASE - SINGLE VOLTAGE MOTOR - CONDUIT BOX @ 'A'

TO REVERSE ROTATION:
INTERCHANGE ANY TWO
LINE LEAD CONNECTIONS.

TERMINAL BLOCK WHEN SPECIFIED



IF MOTOR HAS 6 LEADS



A-9806 DECAL

OPTIONAL CORD CONNECTION



VIEW OF TERMINAL END

DRAWING REVISION AB	REVISION BY JJB	DATE 06-27-2017
ECO ECO-0125361	APPROVED BY TB	DATE 06-27-2017
ECO DESCRIPTION UPDATED TO CURRENT STANDARDS		
<small>COPYRIGHT REGAL BELOIT AMERICA, INC. ALL RIGHTS RESERVED. PROPRIETARY AND CONFIDENTIAL INFORMATION - THIS DOCUMENT IS THE PROPERTY OF REGAL BELOIT AMERICA, INC. ("OWNER") AND CONTAINS OWNER'S PROPRIETARY INFORMATION. ANY PERSON, CORPORATION OR OTHER FIRM RECEIVING IT IS DEEMED, BY RECEIVING IT, TO AGREE THAT IT, AND/OR ANY PART OF IT, SHALL NOT BE DISCLOSED TO ANY PERSON, CORPORATION OR OTHER ENTITY, DUPLICATED, AND/OR USED, EXCEPT AS EXPRESSLY APPROVED IN WRITING IN ADVANCE BY OWNER. THIS DOCUMENT SHALL BE RETURNED TO OWNER UPON REQUEST. IT MAY BE SUBJECT TO CERTAIN RESTRICTIONS UNDER APPLICABLE EXPORT CONTROL LAWS AND REGULATIONS.</small>		

DRAWN BY DA
DATE 03-26-1993
APPROVED BY TB
DATE 03-26-1993
REFERENCE
THIRD ANGLE PROJECTION



Regal Beloit America, Inc.

DESCRIPTION
CONNECTION DIAGRAM
EXTERNAL - SINGLE VOLTAGE - 3Ø MOTOR

MATERIAL PROCESS/FINISH

SIZE A	DRAWING NUMBER EE7300	SHEET 1 OF 1
-----------	--------------------------	-----------------