

PRODUCT INFORMATION PACKET

marathon®
Motors

Model No: 256TTDX16006

Catalog No: E709A

XRI® General Purpose General Purpose Motor, 25 & 25 HP, 3 Ph, 60 & 50 Hz, 200-230/460 & 200/400 V,
3600 & 3000 RPM, 256T Frame, DP



Regal and Marathon are trademarks of Regal Rexnord Corporation or one of its affiliated companies.

©2023 Regal Rexnord Corporation, All Rights Reserved. MC017097E

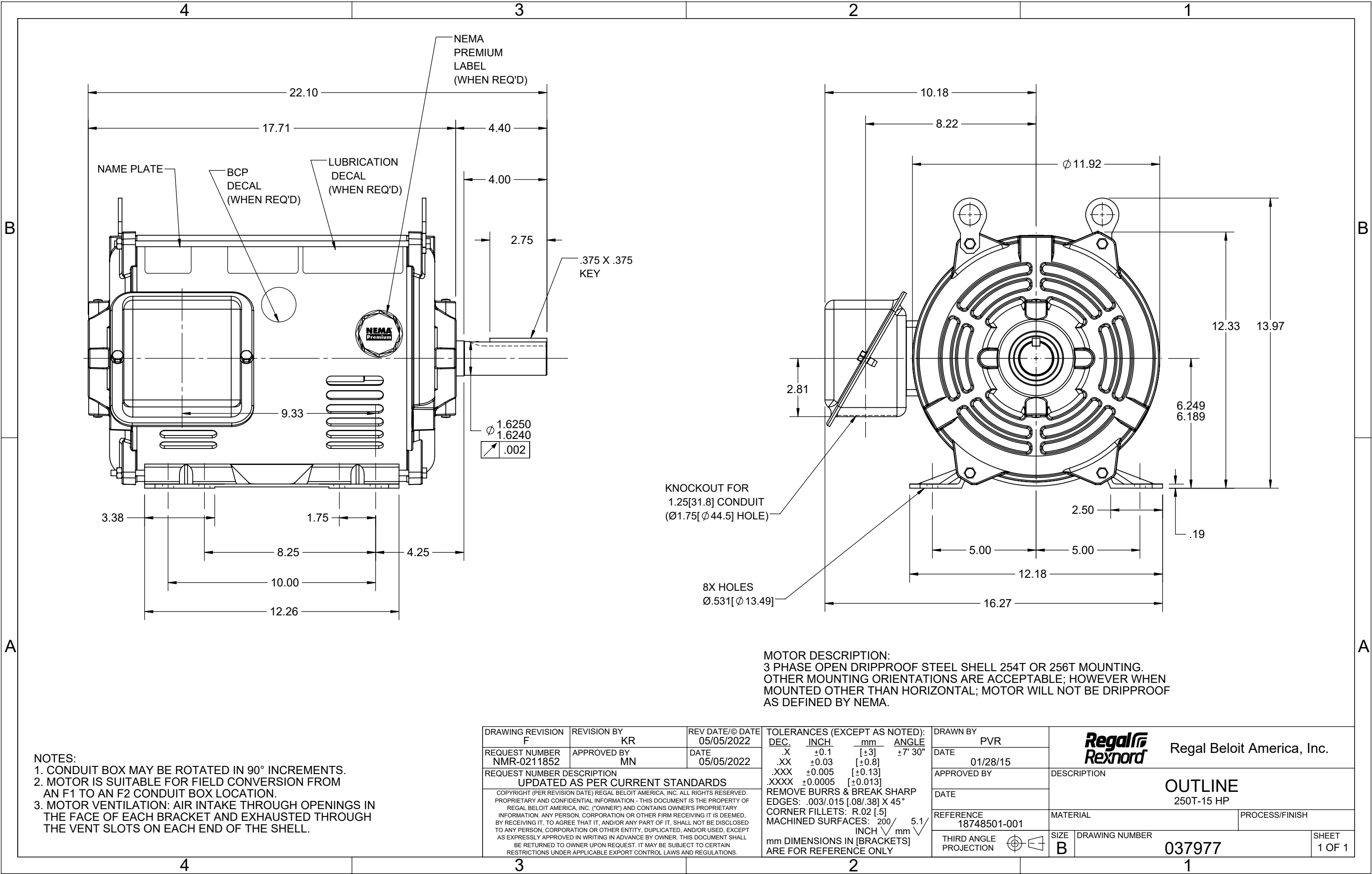
RegalRexnord

Nameplate Specifications

Phase	3	Output HP	25 & 25 Hp
Output KW	18.7 & 18.7 kW	Voltage	200-230/460 & 200/400 V
Speed	3530 & 2915 rpm	Service Factor	1.15 & 1.15
Frame	256T	Enclosure	Drip Proof
Thermal Protection	No Protection	Efficiency	91.7 & 89.5 %
Ambient Temperature	40 °C	Frequency	60 & 50 Hz
Current	52-57/28.5 & 66/33 A	Power Factor	89.6
Duty	Continuous	Insulation Class	F
Design Code	B	KVA Code	G
Drive End Bearing Size	6309	Opp Drive End Bearing Size	6207
UL	Recognized	CSA	Y
CE	Y	IP Code	12
Number of Speeds	1		


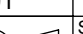
Technical Specifications

Electrical Type	Squirrel Cage Induction Run	Starting Method	Across The Line
Poles	2	Rotation	Reversible
Resistance Main	.48 Ohms	Mounting	Rigid Base
Motor Orientation	Horizontal	Drive End Bearing	Ball
Opp Drive End Bearing	Ball	Frame Material	Rolled Steel
Shaft Type	T	Overall Length	22.10 in
Shaft Diameter	1.625 in	Shaft Extension	4 in
Assembly/Box Mounting	F1 ONLY		
Outline Drawing	037977-1300	Connection Drawing	80022802



NOTES:
1. CONDUIT BOX MAY BE ROTATED IN 90° INCREMENTS.
2. MOTOR IS SUITABLE FOR FIELD CONVERSION FROM AN F1 TO AN F2 CONDUIT BOX LOCATION.
3. MOTOR VENTILATION: AIR INTAKE THROUGH OPENINGS IN THE FACE OF EACH BRACKET AND EXHAUSTED THROUGH THE VENT SLOTS ON EACH END OF THE SHELL.

MOTOR DESCRIPTION:
3 PHASE OPEN DRIPPROOF STEEL SHELL 254T OR 256T MOUNTING.
OTHER MOUNTING ORIENTATIONS ARE ACCEPTABLE; HOWEVER WHEN MOUNTED OTHER THAN HORIZONTAL; MOTOR WILL NOT BE DRIPPROOF AS DEFINED BY NEMA.

DRAWING REVISION F		REVISION BY KR		REV DATE/© DATE 05/05/2022		TOLERANCES (EXCEPT AS NOTED): DEC. INCH mm ANGLE .X ±0.1 [±3] ±7° 30" .XX ±0.03 [±0.8] .XXX ±0.005 [±0.13] .XXXX ±0.0005 [±0.013] REMOVE BURRS & BREAK SHARP EDGES: .003/.015 [.08/.38] X 45° CORNER FILLETS: R.02 [.5] MACHINED SURFACES: 200 INCH 5.1 mm mm DIMENSIONS IN [BRACKETS] ARE FOR REFERENCE ONLY				DRAWN BY PVR		<div></div> <div>Regal Beloit America, Inc.</div>					
REQUEST NUMBER NMR-0211852		APPROVED BY MN		DATE 05/05/2022						DATE 01/28/15							
REQUEST NUMBER DESCRIPTION UPDATED AS PER CURRENT STANDARDS						APPROVED BY						DESCRIPTION					
COPYRIGHT (PER REVISION DATE) REGAL BELOIT AMERICA, INC. ALL RIGHTS RESERVED. PROPRIETARY AND CONFIDENTIAL INFORMATION - THIS DOCUMENT IS THE PROPERTY OF REGAL BELOIT AMERICA, INC. ("OWNER") AND CONTAINS OWNER'S PROPRIETARY INFORMATION. ANY PERSON, CORPORATION OR OTHER FIRM RECEIVING IT IS DEEMED, BY RECEIVING IT, TO AGREE THAT IT, AND/OR ANY PART OF IT, SHALL NOT BE DISCLOSED TO ANY PERSON, CORPORATION OR OTHER ENTITY, DUPLICATED, AND/OR USED, EXCEPT AS EXPRESSLY APPROVED IN WRITING IN ADVANCE BY OWNER. THIS DOCUMENT SHALL BE RETURNED TO OWNER UPON REQUEST. IT MAY BE SUBJECT TO CERTAIN RESTRICTIONS UNDER APPLICABLE EXPORT CONTROL LAWS AND REGULATIONS.						DATE						OUTLINE 250T-15 HP					
						REFERENCE 18748501-001		MATERIAL		PROCESS/FINISH							
						THIRD ANGLE PROJECTION				SIZE B		DRAWING NUMBER 037977				SHEET 1 OF 1	

CERTIFICATION DATA SHEET

Model#: 256TTDX16006 AA

WINDING#: BHR2T01 NONE 3

CONN. DIAGRAM: 80022802

ASSEMBLY: F1 ONLY

OUTLINE: 037977

TYPICAL MOTOR PERFORMANCE DATA

HP	KW	SYNC. RPM	F.L. RPM	FRAME	ENCLOSURE	KVA CODE	DESIGN
25&25	18.7&18.7	3600	3525&2915	256T	DP	G	B

PH	Hz	VOLTS	FL AMPS	START TYPE	DUTY	INSL	S.F	AMB°C	ELEVATION
3	60/50	200- 230/460#200/ 400	52- 57/28.5&67/33 .5	ACROSS THE LINE	CONTINUOU S	F4	1.15/1.15	40	3300

FULL LOAD EFF: 91.7&89.5	3/4 LOAD EFF: 92	1/2 LOAD EFF: 93	GTD. EFF	ELEC. TYPE	NO LOAD AMPS
FULL LOAD PF: 89.5&89.8	3/4 LOAD PF: 87.5	1/2 LOAD PF: 78.5	90.2	SQ CAGE IND RUN	18 / 9

F.L. TORQUE	LOCKED ROTOR AMPS	L.R. TORQUE	B.D. TORQUE	F.L. RISE°C
37.2 LB-FT	334 / 167	51.7 LB-FT 139	94.5 LB-FT 254	36

SOUND PRESSURE @ 3 FT.	SOUND POWER	ROTOR WK^2	MAX. WK^2	SAFE STALL TIME	STARTS /HOUR	APPROX. MOTOR WGT
0 dBA	10 dBA	0 LB-FT^2	0 LB-FT^2	15 SEC.	2	0 LBS.

*** SUPPLEMENTAL INFORMATION ***

DE BRACKET TYPE	ODE BRACKET TYPE	MOUNT TYPE	ORIENTATION	SEVERE DUTY	HAZARDOUS LOCATION	DRIP COVER	SCREENS	PAINT
STANDARD	STANDARD	RIGID	HORIZONTAL	FALSE	NONE	FALSE	NONE	BLUE (ENAMEL)

BEARINGS		GREASE	SHAFT TYPE	SPECIAL DE	SPECIAL ODE	SHAFT MATERIAL	FRAME MATERIAL
DE	OPE						
BALL	BALL	POLYREX EM	T	NONE	NONE	AISI 1045 (C-240)	ROLLED STEEL
6309	6207						

THERMO-PROTECTORS				THERMISTORS	CONTROL	SPACE /n HEATERS
THERMOSTATS	PROTECTORS	WDG RTDs	BRG RTDs			
NONE	NOT	NONE	NONE	NONE	FALSE	NONE VOLTS

If Inverter equals NONE, contact factory for further information

* N O T E S *	INVERTER TORQUE: NONE
	INV. HP SPEED RANGE: NONE
	ENCODER: NONE
	NONE NONE NONE NONE PPR
	BRAKE: NONE NONE
	NONE P/N NONE
	NONE NONE
	NONE FT-LB NONE V NONE Hz

DATE: 06/23/2017 05:33:24 AM
FORM 3531 REV.3 02/07/99

** Subject to change without notice.


MARATHON ELECTRIC CORPORATION

TYPICAL PERFORMANCE CURVE for AC MOTOR

Customer

Curve at

460

Volts

 HP 25&25

 PHASE 3

 Model No 256TTDX16006
60

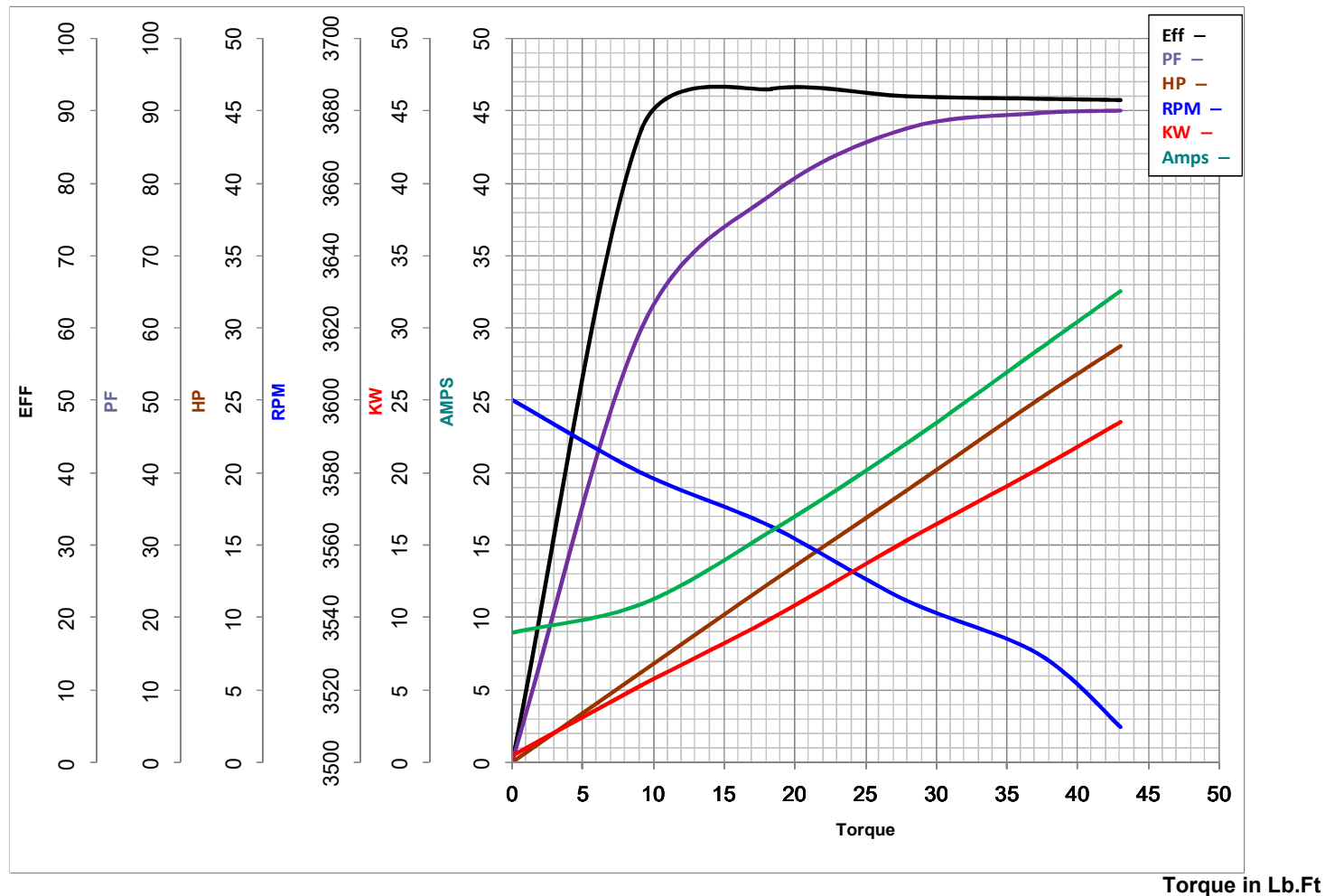
HZ

 VOLTS 200-230/460&200/400
25

HP

 Catalog No E709A

 HZ 60&50

 RPM 3530&2915


Torque in Lb.Ft

 FL TORQUE 37.2 Lb.Ft

 BD TORQUE 94.5 Lb.Ft

 LR TORQUE 51.7 Lb.Ft

 FL AMPS 52-57/28.5

 PU TORQUE 46.5 Lb.Ft

 LR AMPS 167

WINDING BHR2T01-3

Date 1/17/2019