

PRODUCT INFORMATION PACKET

Model No: 256TTDW16076
Catalog No: 256TTDW16076
10,1200,256JP,DP,3/60/230/460

Regal and are trademarks of Regal Rexnord Corporation or one of its affiliated companies.
©2022 Regal Rexnord Corporation, All Rights Reserved. MC017097E



Nameplate Specifications

Output HP	10 Hp	Output KW	7.5 kW
Frequency	60 Hz	Voltage	230/460 V
Current	27.4/13.7 A	Speed	1175 rpm
Service Factor	1.15	Phase	3
Efficiency	91.7 %	Power Factor	75.5
Duty	Continuous	Insulation Class	B
Design Code	B	KVA Code	G
Frame	256JP	Enclosure	Drip Proof
Thermal Protection	No Protection	Ambient Temperature	40 °C
Drive End Bearing Size	6309	Opp Drive End Bearing Size	6207
UL	Recognized	CSA	Y
CE	Y	IP Code	12
Number of Speeds	1		

Technical Specifications

Electrical Type	Squirrel Cage Induction Run	Starting Method	Across The Line
Poles	6	Rotation	Reversible
Resistance Main	.634 Ohms	Mounting	Rigid Base
Motor Orientation	Horizontal	Drive End Bearing	Ball
Opp Drive End Bearing	Ball	Frame Material	Rolled Steel
Shaft Type	JP	Assembly/Box Mounting	F1/F2 CAPABLE
Connection Drawing	80022802	Outline Drawing	610-0009

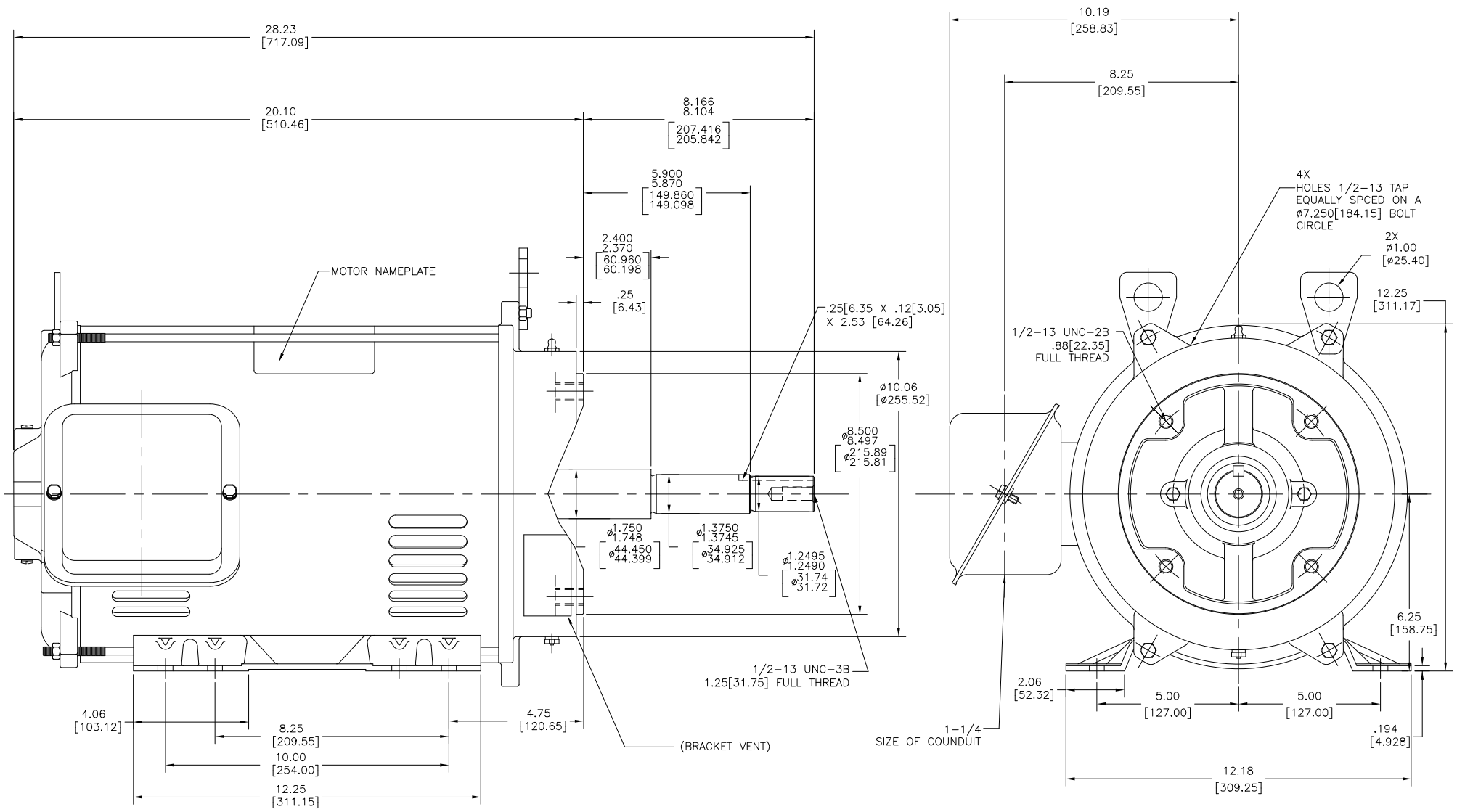
This is an uncontrolled document once printed or downloaded and is subject to change without notice. Date Created:11/09/2022

D

C

B

A



- NOTES:
- 5.250[133.35], .625[15.88] & 3.00[76.20] DIMENSIONS ARE MEASURED WITH SHAFT PULLED BY HAND TO THE LIMIT OF END PLAY.
 - 7.250[184.15] DIMENSION IS TO THE CENTERLINE OF THE BOLT HOLES WITHIN .015[.38]
 - SHAFT ENDPLAY SHALL NOT EXCEED THE BEARING INTERNAL AXIAL MOVEMENT. BEARING MOUNTING FITS SHALL BE AS RECOMMENDED BY THE BEARING MANUFACTURER.
 - TWO BOTTOM 1/2-13 HOLES WILL BE AN EQUAL DISTANCE FORM THE PLANE OF BOTTOM OF THE FEET WITHIN .003[.08]
 - MOTOR CAN BE CONVERTED TO HAVE F-2 CONDUIT BOX MOUNTING.

DRAWING REVISION C	REVISION BY MJ	DATE 9/28/2022	TOLERANCES UNLESS OTHERWISE SPECIFIED DEC. INCH mm ANGLE X ±0.1 [±2.5] ±0.5° .XX ±0.02 [±0.51] .XXX ±0.005 [±0.127] XXXX ±0.0005 [±0.0127] REMOVE BURRS & BREAK SHARP EDGES .003[.015] [0.76[.381] CORNER FILLETS .02 [51] MACHINED SURFACES 12/ INCH mm 3/2 mm SHOWN IN [BRACKETS]	DRAWN BY: A:ARREOLA		
ECO CR-0011588	APPROVED BY LIRA	DATE 9/28/2022	OTHERWISE SPECIFIED	DATE: 10-14-2016		
ECO DESCRIPTION ADD BRACKET VENTS IN OUTLINE			REFERENCE	APPROVED BY: A:ARREOLA	DESCRIPTION MODEL-IHP OUTLINE	
<small> COPYRIGHT REGAL BELOIT AMERICA, INC. ALL RIGHTS RESERVED. PROPRIETARY AND CONFIDENTIAL INFORMATION - THIS DOCUMENT IS THE PROPERTY OF REGAL BELOIT AMERICA, INC. (OWNER) AND COMPANY OWNER'S PROPRIETARY INFORMATION. ANY PERSON, CORPORATION OR OTHER ENTITY, DUPLICATED, AND/OR USED, EXCEPT BY RECEIVING IT, TO AGREE THAT IT, AND/OR ANY PART OF IT, SHALL NOT BE DISCLOSED TO ANY PERSON, CORPORATION OR OTHER ENTITY, DUPLICATED, AND/OR USED, EXCEPT AS EXPRESSLY APPROVED IN WRITING IN ADVANCE BY OWNER. THIS DOCUMENT SHALL BE RETURNED TO OWNER UPON REQUEST. IT MAY BE SUBJECT TO CERTAIN RESTRICTIONS UNDER APPLICABLE EXPORT CONTROL LAWS AND REGULATIONS. </small>			DATE: 10-14-2016	MATERIAL	PROCESS/FINISH	
			MACHINED SURFACES 12/ INCH mm 3/2	THIRD ANGLE PROJECTION	SIZE DWG NO C 610-0009	SHEET 1