

PRODUCT INFORMATION PACKET

Model No: 256TTDR16037

Catalog No: U100A

Close-Coupled Pump Motor, 20 & 15 HP, 3 Ph, 60 & 50 Hz, 230/460 & 190/380 V, 1800 & 1500 RPM,
256JMV Frame, DP



Regal and Marathon are trademarks of Regal Rexnord Corporation or one of its affiliated companies.

©2023 Regal Rexnord Corporation, All Rights Reserved. MC017097E

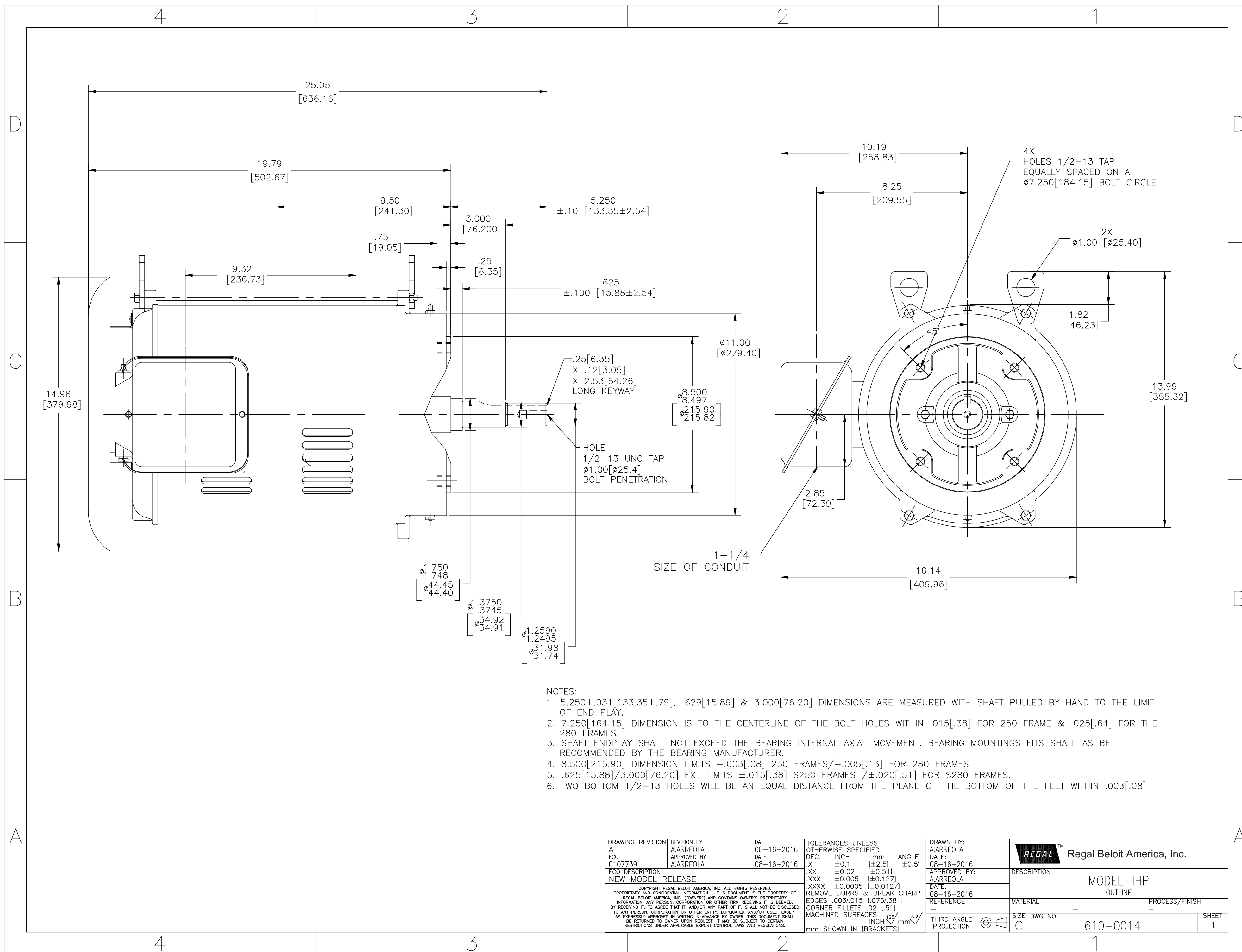
Nameplate Specifications

Phase	3	Output HP	20 & 15 Hp
Output KW	14.9 & 11.2 kW	Voltage	230/460 & 190/380 V
Speed	1765 & rpm	Service Factor	1.15 & 1.15
Frame	256JMV	Enclosure	Drip Proof
Thermal Protection	No Protection	Efficiency	93.6 %
Ambient Temperature	40 °C	Frequency	60 & 50 Hz
Current	49/24.5 & 50/25 A	Power Factor	80.5
Duty	Continuous	Insulation Class	B
Design Code	B	KVA Code	F
Drive End Bearing Size	6309	Opp Drive End Bearing Size	6207
UL	Recognized	CSA	Y
CE	Y	IP Code	12
Number of Speeds	1		

Technical Specifications

Electrical Type	Squirrel Cage Induction Run	Starting Method	Across The Line
Poles	4	Rotation	Reversible
Resistance Main	0 Ohms	Mounting	Round
Motor Orientation	Shaft Down	Drive End Bearing	Ball
Opp Drive End Bearing	Ball	Frame Material	Rolled Steel
Shaft Type	JM	Shaft Diameter	1.750 in
Assembly/Box Mounting	F1/F2 CAPABLE		
Outline Drawing	610-0014-1300	Connection Drawing	A-EE7308

This is an uncontrolled document once printed or downloaded and is subject to change without notice. Date Created:06/22/2023



NOTES:

1. 5.250±.031[133.35±.79], .629[15.89] & 3.000[76.20] DIMENSIONS ARE MEASURED WITH SHAFT PULLED BY HAND TO THE LIMIT OF END PLAY.
2. 7.250[164.15] DIMENSION IS TO THE CENTERLINE OF THE BOLT HOLES WITHIN .015[.38] FOR 250 FRAME & .025[.64] FOR THE 280 FRAMES.
3. SHAFT ENDPLAY SHALL NOT EXCEED THE BEARING INTERNAL AXIAL MOVEMENT. BEARING MOUNTINGS FITS SHALL AS BE RECOMMENDED BY THE BEARING MANUFACTURER.
4. 8.500[215.90] DIMENSION LIMITS -.003[.08] 250 FRAMES/-.005[.13] FOR 280 FRAMES
5. .625[15.88]/3.000[76.20] EXT LIMITS ±.015[.38] S250 FRAMES /±.020[.51] FOR S280 FRAMES.
6. TWO BOTTOM 1/2-13 HOLES WILL BE AN EQUAL DISTANCE FROM THE PLANE OF THE BOTTOM OF THE FEET WITHIN .003[.08]

DRAWING REVISION A	REVISION BY A.ARREOLA	DATE 08-16-2016	TOLERANCES UNLESS OTHERWISE SPECIFIED DEC. INCH mm ANGLE .XX ±0.1 [±2.5] ±0.5° .XX ±0.02 [±0.51] .XXX ±0.005 [±0.127] .XXXX ±0.0005 [±0.0127]	DRAWN BY: A.ARREOLA	Regal Beloit America, Inc.
ECO 0107739	APPROVED BY A.ARREOLA	DATE 08-16-2016	REMOVE BURRS & BREAK SHARP EDGES .003/.015 [0.076/.381] CORNER FILLETS .02 [51] MACHINED SURFACES $\frac{125}{\text{INCH}} \sqrt{\frac{3.2}{\text{mm}}}$	DATE: 08-16-2016	
ECO DESCRIPTION NEW MODEL RELEASE				APPROVED BY: A.ARREOLA	DESCRIPTION MODEL-IHP OUTLINE
<small>COPYRIGHT REGAL BELOIT AMERICA, INC. ALL RIGHTS RESERVED. PROPRIETARY AND CONFIDENTIAL INFORMATION - THIS DOCUMENT IS THE PROPERTY OF REGAL BELOIT AMERICA, INC. (OWNER) AND CONTAINS OWNER'S PROPRIETARY INFORMATION. ANY PERSON, CORPORATION OR OTHER FIRM RECEIVING IT IS DEEMED, BY RECEIVING IT, TO AGREE THAT IT, AND/OR ANY PART OF IT, SHALL NOT BE DISCLOSED TO ANY PERSON, CORPORATION OR OTHER ENTITY, DUPLICATED, AND/OR USED, EXCEPT AS EXPRESSLY APPROVED IN WRITING IN ADVANCE BY OWNER. THIS DOCUMENT SHALL BE RETURNED TO OWNER UPON REQUEST. IT MAY BE SUBJECT TO CERTAIN RESTRICTIONS UNDER APPLICABLE EXPORT CONTROL LAWS AND REGULATIONS.</small>				DATE: 08-16-2016	MATERIAL -
				REFERENCE -	PROCESS/FINISH -
				THIRD ANGLE PROJECTION	SIZE DWG NO C 610-0014
					SHEET 1



MARATHON ELECTRIC CORPORATION
TYPICAL PERFORMANCE CURVE for AC MOTOR

Customer

Curve at

460 Volts
60 HZ
20 HP

HP 20&15

PHASE 3

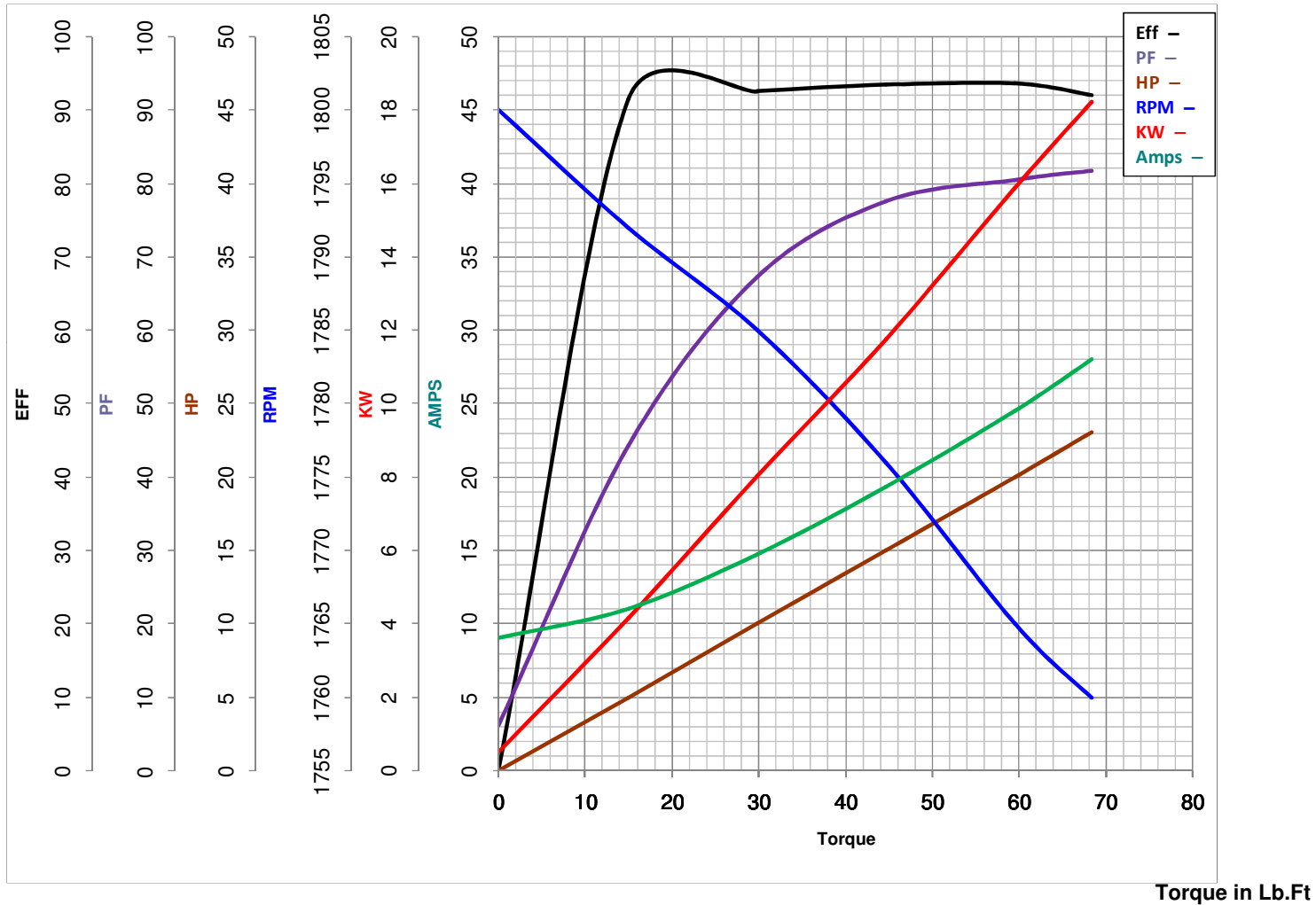
Model No 256TTDR16037

VOLTS 230/460&190/380

Catalog No U100A

HZ 60&50

RPM 1765&



FL TORQUE	<u>59.5</u>	Lb.Ft	FL AMPS	<u>49/24.5</u>
BD TORQUE	<u>160.0</u>	Lb.Ft	PU TORQUE	<u>113.0</u>
LR TORQUE	<u>115</u>	Lb.Ft	LR AMPS	<u>140</u>
WINDING	BHR4T01-		Date	3/7/2019