

PRODUCT INFORMATION PACKET

Model No: 256TTDR16008

Catalog No: U103A

Close-Coupled Pump Motor, 25 & 20 HP, 3 Ph, 60 & 50 Hz, 230/460 & 190/380 V, 3600 & 3000 RPM,
256JM Frame, DP



Regal and Marathon are trademarks of Regal Rexnord Corporation or one of its affiliated companies.

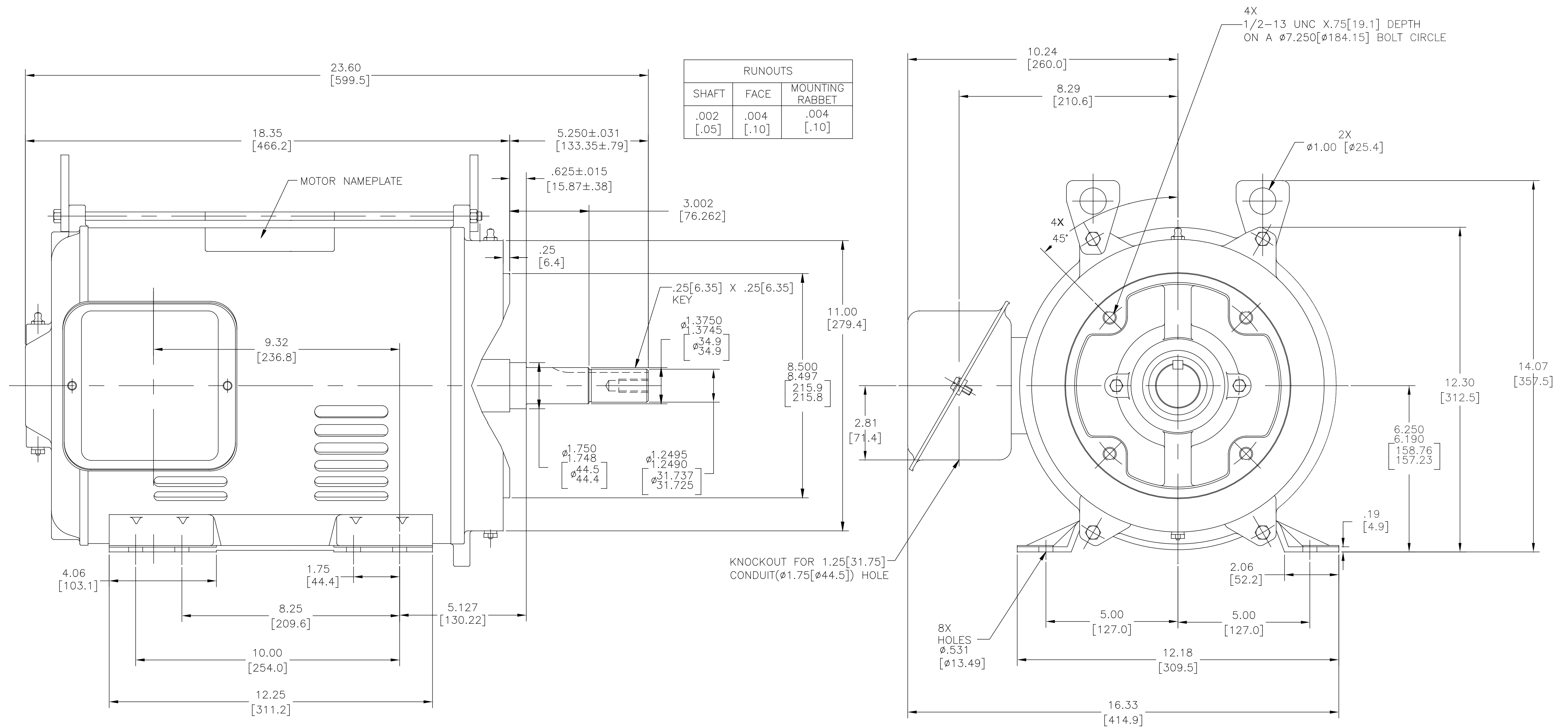
©2023 Regal Rexnord Corporation, All Rights Reserved. MC017097E

Nameplate Specifications

| | | | |
|------------------------|------------------------------|----------------------------|--------------------------------|
| Phase | 3 | Output HP | 25 & 20 Hp |
| Output KW | 18.7 & 14.9 kW | Voltage | 230/460 & 190/380 V |
| Speed | 3525 & 2930 rpm | Service Factor | 1.15 & 1.15 |
| Frame | 256JM | Enclosure | Drip Proof |
| Thermal Protection | No Protection | Efficiency | 92 & 90.9 % |
| Ambient Temperature | 40 °C | Frequency | 60 & 50 Hz |
| Current | 57/28.5 & 56/28 A | Power Factor | 89.5 |
| Duty | Continuous | Insulation Class | B |
| Design Code | B | KVA Code | G |
| Drive End Bearing Size | 6309 | Opp Drive End Bearing Size | 6207 |
| UL | Recognized | CSA | Y |
| CE | Y | IP Code | 12 |
| Number of Speeds | 1 | | |

Technical Specifications

| | | | |
|-----------------------|------------------------------------|--------------------|------------------------|
| Electrical Type | Squirrel Cage Induction Run | Starting Method | Across The Line |
| Poles | 2 | Rotation | Reversible |
| Resistance Main | .48 Ohms | Mounting | Rigid Base |
| Motor Orientation | Horizontal | Drive End Bearing | Ball |
| Opp Drive End Bearing | Ball | Frame Material | Rolled Steel |
| Shaft Type | JM | Overall Length | 23.60 in |
| Shaft Diameter | 1.625 in | Shaft Extension | 5.28 in |
| Assembly/Box Mounting | F1/F2 CAPABLE | | |
| Outline Drawing | 610-0016 | Connection Drawing | 80022802 |



NOTES:

1. 5.250±.031[133.35±.79], .625[15.89] & 3.000[76.20] DIMENSIONS ARE MEASURED WITH SHAFT PULLED BY HAND TO THE LIMIT OF END PLAY.
2. 7.250[164.15] DIMENSION IS TO THE CENTERLINE OF THE BOLT HOLES WITHIN .015[.38] FOR 250 FRAME & .025[.64] FOR 280 FRAMES.
3. SHAFT ENDPLAY SHALL NOT EXCEED THE BEARING INTERNAL AXIAL MOVEMENT. BEARING MOUNTING FITS SHALL BE AS RECOMMENDED BY THE BEARING MANUFACTURER.
4. 8.500[215.90] DIMENSION LIMITS -.003[.08] 250 FRAMES/ -.005[.13] FOR 280 FRAMES.
5. .625[15.88]/3.000[76.20] EXT LIMITS ±.015[.38] S250 FRAMES/±.020[.51] FOR S280 FRAMES.
6. TWO BOTTOM 1/2-13 HOLES WILL BE AN EQUAL DISTANCE FROM THE PLANE OF THE BOTTOM OF THE FEET WITHIN .003[.08].

| | | | | | |
|--|---------------------------|--------------------|---|---------------------------|---|
| DRAWING REVISION A | REVISION BY A.ARRICOLA | DATE 09-2-2016 | TOLERANCES UNLESS OTHERWISE SPECIFIED DEC INCH mm ANGLE X ±0.1 ±2.5 ±0.5° XX ±0.02 ±0.511 XXX ±0.005 ±0.1271 | DRAWN BY A.ARRICOLA | Regal Beloit America, Inc. DESCRIPTION MODEL-IHP OUTLINE |
| ECO 0109846 | APPROVED BY A.ARRICOLA | DATE 09-28-2016 | REMOVE BURRS & BREAK SHARP EDGES .003/.015 [076/381] CORNER FILLETS .02 [511] MACHINED SURFACES mm SHOWN IN [BRACKETS] | DATE 09-28-2016 | |
| ECO DESCRIPTION NEW MODEL RELEASE | | | | APPROVED BY A.ARRICOLA | MATERIAL - |
| COPYRIGHT REGAL BELOIT AMERICA, INC. ALL RIGHTS RESERVED. PROPRIETARY AND CONFIDENTIAL INFORMATION - THE DOCUMENT IS THE PROPERTY OF REGAL BELOIT AMERICA, INC. (OWNER) AND CONTAINS OWNER'S PROPRIETARY INFORMATION. ANY REPRODUCTION OR OTHER FORM REUSE OF THIS DOCUMENT WITHOUT THE EXPRESS WRITTEN PERMISSION OF REGAL BELOIT AMERICA, INC. IS STRICTLY PROHIBITED. THIS DOCUMENT SHALL BE RETURNED TO OWNER UPON REQUEST. IT MAY BE SUBJECT TO CERTAIN RESTRICTIONS UNDER APPLICABLE EXPORT CONTROL LAWS AND REGULATIONS. | | | | DATE 09-28-2016 | PROCESS/FINISH - |
| | | | | THIRD ANGLE PROJECTION | SIZE DWG NO D 610-0016 |
| | | | | | SHEET 1 |

CERTIFICATION DATA SHEET

Model#: 256TTDR16008 AA
CONN. DIAGRAM: 80022802
OUTLINE: 610-0016

WINDING#: BHR2T01 NONE 3
ASSEMBLY: F1/F2 CAPABLE

TYPICAL MOTOR PERFORMANCE DATA

| HP | KW | SYNC. RPM | F.L. RPM | FRAME | ENCLOSURE | KVA CODE | DESIGN |
|-------|-----------|-----------|-----------|-------|-----------|----------|--------|
| 25&20 | 18.7&14.9 | 3600 | 3525&2930 | 256JM | DP | G | B |

| PH | Hz | VOLTS | FL AMPS | START TYPE | DUTY | INSL | S.F | AMB°C | ELEVATION |
|----|-------|---------------------|---------------|--------------------|----------------|------|-----------|-------|-----------|
| 3 | 60/50 | 230/460#190/ 380 | 57/28.5&56/28 | ACROSS THE LINE | CONTINUOU S | B4 | 1.15/1.15 | 40 | 3300 |

| FULL LOAD EFF: 92&90.9 | 3/4 LOAD EFF: 92 | 1/2 LOAD EFF: 93 | GTD. EFF | ELEC. TYPE | NO LOAD AMPS |
|---------------------------|-------------------|-------------------|----------|-----------------|--------------|
| FULL LOAD PF: 89.5&91 | 3/4 LOAD PF: 87.5 | 1/2 LOAD PF: 78.5 | 90.2 | SQ CAGE IND RUN | 18 / 9 |

| F.L. TORQUE | LOCKED ROTOR AMPS | L.R. TORQUE | B.D. TORQUE | F.L. RISE°C |
|-------------|-------------------|----------------|----------------|-------------|
| 37.2 LB-FT | 334 / 167 | 51.7 LB-FT 139 | 94.5 LB-FT 254 | 36 |

| SOUND PRESSURE @ 3 FT. | SOUND POWER | ROTOR WK^2 | MAX. WK^2 | SAFE STALL TIME | STARTS /HOUR | APPROX. MOTOR WGT |
|---------------------------|-------------|------------|-----------|-----------------|-----------------|----------------------|
| 0 dBA | 10 dBA | 0 LB-FT^2 | 0 LB-FT^2 | 15 SEC. | 2 | 0 LBS. |

***** SUPPLEMENTAL INFORMATION *****

| DE BRACKET TYPE | ODE BRACKET TYPE | MOUNT TYPE | ORIENTATION | SEVERE DUTY | HAZARDOUS LOCATION | DRIP COVER | SCREENS | PAINT |
|--------------------|---------------------|---------------|-------------|----------------|-----------------------|---------------|---------|------------------|
| C-FACE | STANDARD | RIGID | HORIZONTAL | FALSE | NONE | FALSE | NONE | BLUE (ENAMEL) |

| BEARINGS | | GREASE | SHAFT TYPE | SPECIAL DE | SPECIAL ODE | SHAFT MATERIAL | FRAME MATERIAL |
|----------|------|------------|------------|------------|-------------|----------------------------|-------------------|
| DE | OPE | | | | | | |
| BALL | BALL | POLYREX EM | JM | NONE | NONE | 1045 HOT ROLLED (C-204) | ROLLED STEEL |
| 6309 | 6207 | | | | | | |

| THERMO-PROTECTORS | | | | THERMISTORS | CONTROL | SPACE /n HEATERS |
|-------------------|------------|----------|----------|-------------|---------|------------------|
| THERMOSTATS | PROTECTORS | WDG RTDs | BRG RTDs | | | |
| NONE | NOT | NONE | NONE | NONE | FALSE | NONE VOLTS |

If Inverter equals NONE, contact factory for further information

| |
|---------------------------|
| INVERTER TORQUE: NONE |
| INV. HP SPEED RANGE: NONE |
| ENCODER: NONE |
| NONE NONE |
| NONE NONE PPR |
| BRAKE: NONE NONE |
| NONE P/N NONE |
| NONE NONE |
| NONE FT-LB NONE V NONE Hz |

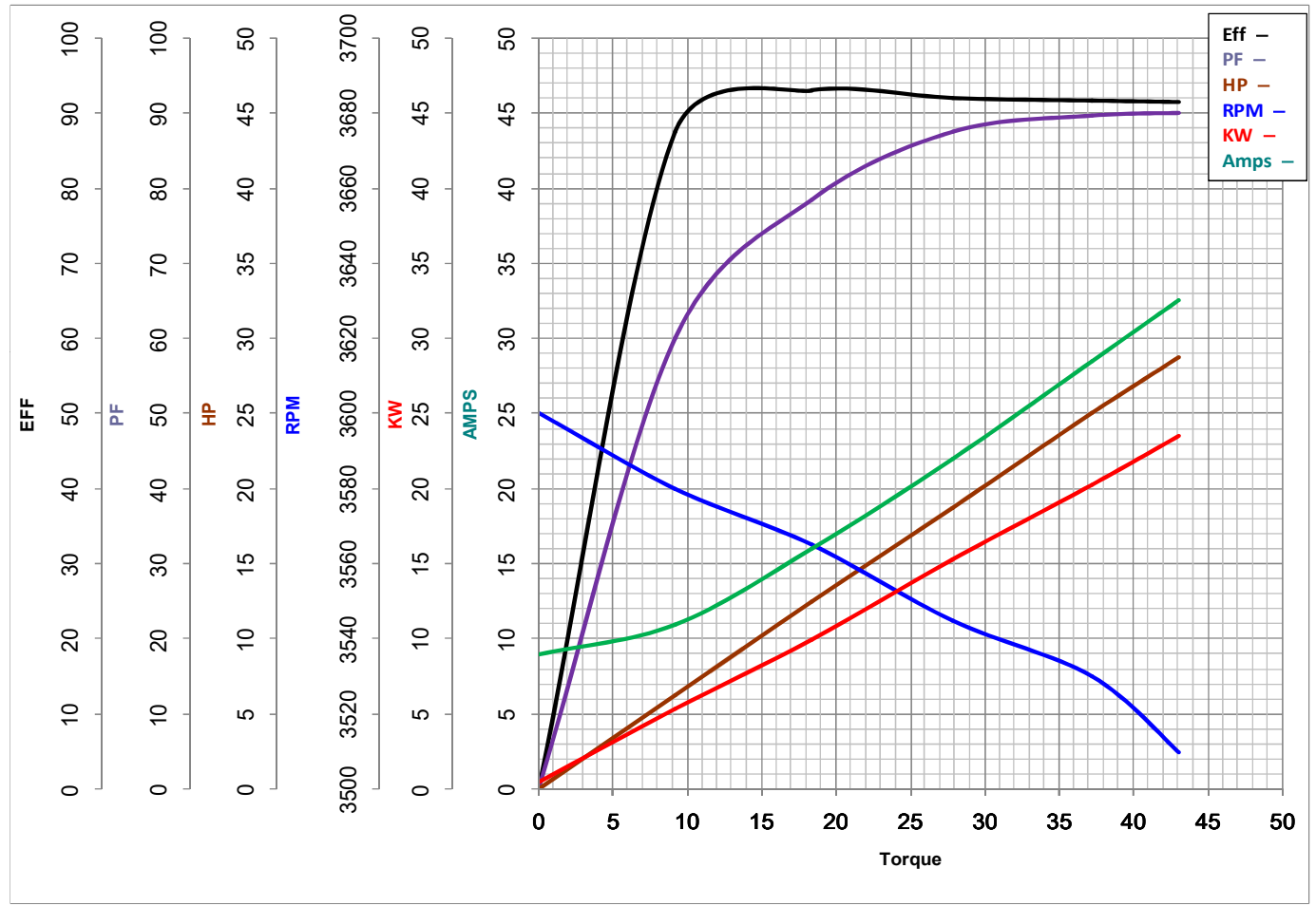
*
N
O
T
E
S
*

DATE: 06/23/2017 05:30:30 AM
 FORM 3531 REV.3 02/07/99
 ** Subject to change without notice.



MARATHON ELECTRIC CORPORATION
TYPICAL PERFORMANCE CURVE for AC MOTOR

Customer _____ Curve at 460 Volts HP 25&20 PHASE 3
 Model No 256TTDR16008 60 HZ 25 HP VOLTS 230/460&190/380
 Catalog No U103A HZ 60&50 RPM 3525&2930



Torque in Lb.Ft

| | | | | | |
|-----------|-------------|-------|-----------|----------------|-------|
| FL TORQUE | <u>37.2</u> | Lb.Ft | FL AMPS | <u>57/28.5</u> | |
| BD TORQUE | <u>94.5</u> | Lb.Ft | PU TORQUE | <u>46.5</u> | Lb.Ft |
| LR TORQUE | <u>51.7</u> | Lb.Ft | LR AMPS | <u>167</u> | |
| WINDING | BHR2T01-3 | | Date | 1/17/2019 | |