

PRODUCT INFORMATION PACKET

marathon®
Motors

Model No: 256TTDR16002

Catalog No: U102A

25 HP Close-Coupled Pump Motor, 3 phase, 3600 RPM, 200 V, 256JM Frame, ODP
Close-Coupled Pump Motors



Regal and Marathon are trademarks of Regal Rexnord Corporation or one of its affiliated companies.
©2021 Regal Rexnord Corporation, All Rights Reserved. MC017097E

RegalRexnord

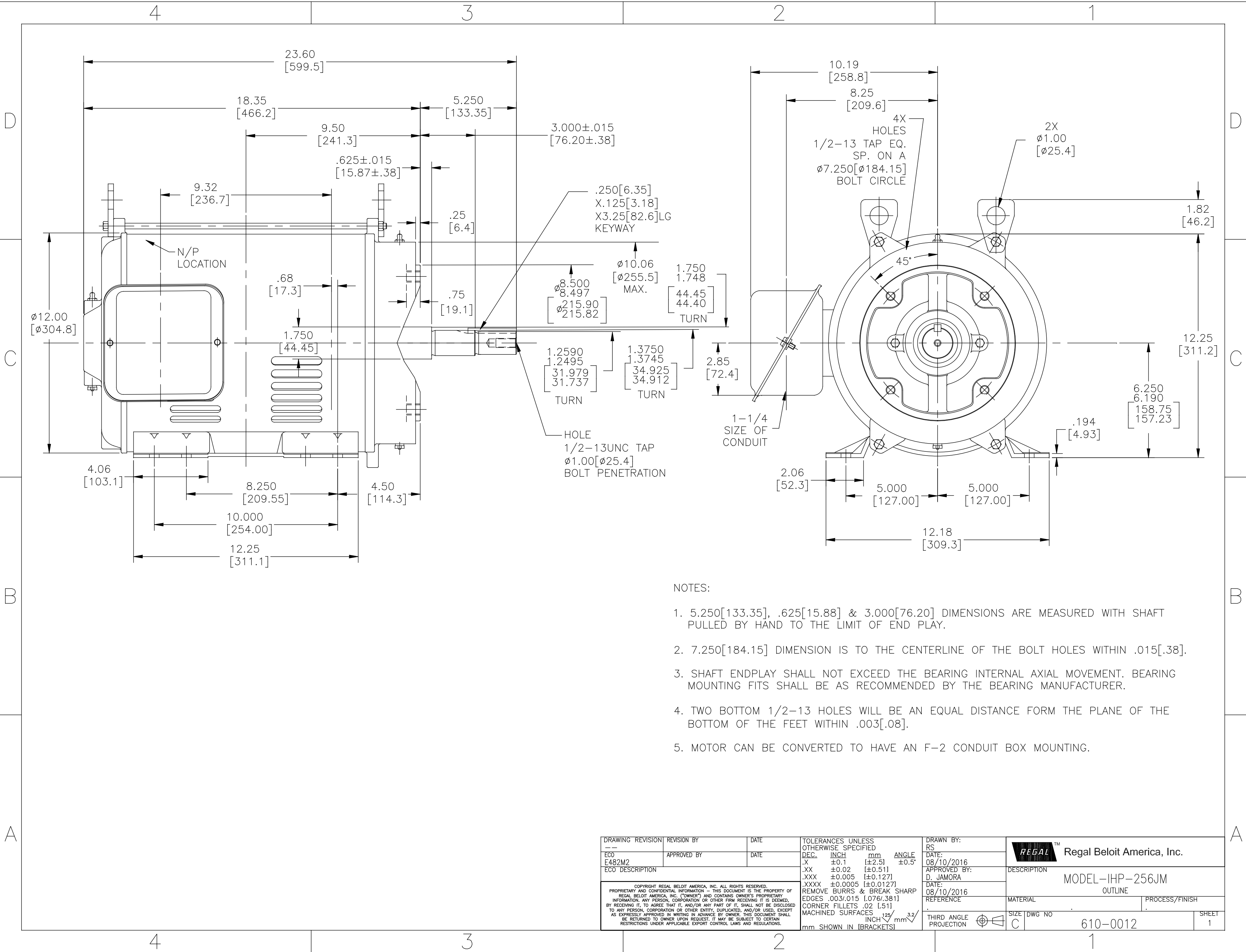
Nameplate Specifications

Output HP	25 Hp	Output KW	18.7 kW
Frequency	60 Hz	Voltage	200 V
Current	65.5 A	Speed	3525 rpm
Service Factor	1.15	Phase	3
Efficiency	92 %	Power Factor	89.5
Duty	Continuous	Insulation Class	F
Design Code	B	KVA Code	G
Frame	256JM	Enclosure	Drip Proof
Thermal Protection	No	Ambient Temperature	40 °C
Drive End Bearing Size	6309	Opp Drive End Bearing Size	6207
UL	Recognized	CSA	Y
CE	Y	IP Code	23
Number of Speeds	1		

Technical Specifications


Electrical Type	Squirrel Cage Induction Run	Starting Method	Across The Line
Poles	2	Rotation	Reversible
Resistance Main	.48 Ohms	Mounting	Rigid Base
Motor Orientation	Horizontal	Drive End Bearing	Ball
Opp Drive End Bearing	Ball	Frame Material	Rolled Steel
Shaft Type	JM	Shaft Diameter	1.249 in
Assembly/Box Mounting	F1/F2 CAPABLE		
Connection Drawing	D0000398-001	Outline Drawing	610-0012-1300

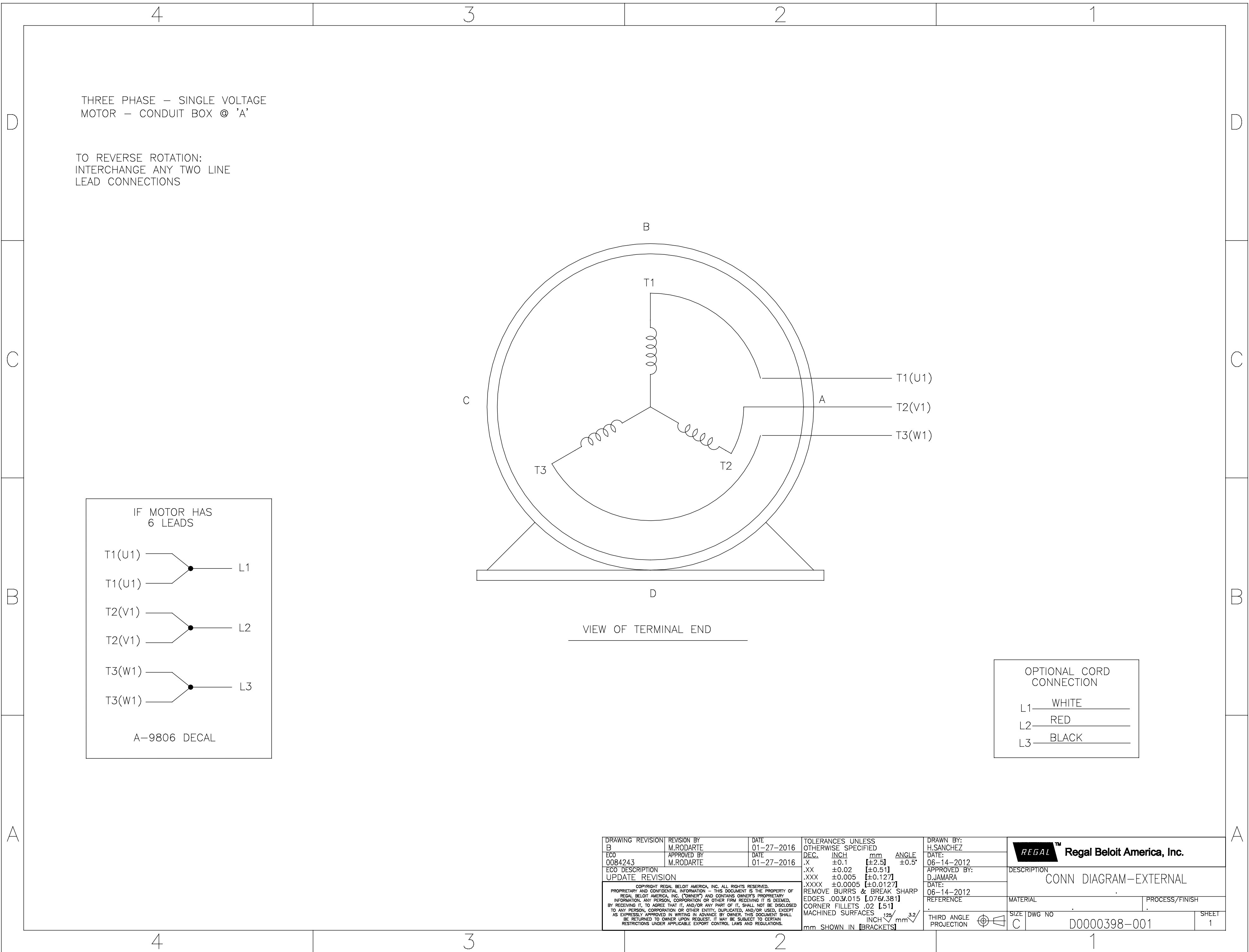
This is an uncontrolled document once printed or downloaded and is subject to change without notice. Date Created:10/12/2021



NOTES:

- 5.250[133.35], .625[15.88] & 3.000[76.20] DIMENSIONS ARE MEASURED WITH SHAFT PULLED BY HAND TO THE LIMIT OF END PLAY.
- 7.250[184.15] DIMENSION IS TO THE CENTERLINE OF THE BOLT HOLES WITHIN .015[.38].
- SHAFT ENDPLAY SHALL NOT EXCEED THE BEARING INTERNAL AXIAL MOVEMENT. BEARING MOUNTING FITS SHALL BE AS RECOMMENDED BY THE BEARING MANUFACTURER.
- TWO BOTTOM 1/2-13 HOLES WILL BE AN EQUAL DISTANCE FORM THE PLANE OF THE BOTTOM OF THE FEET WITHIN .003[.08].
- MOTOR CAN BE CONVERTED TO HAVE AN F-2 CONDUIT BOX MOUNTING.

DRAWING REVISION ---	REVISION BY	DATE	TOLERANCES UNLESS OTHERWISE SPECIFIED	DRAWN BY: RS	 Regal Beloit America, Inc.
ECO E482M2	APPROVED BY	DATE	DEC. INCH mm ANGLE .X ±0.1 [±2.5] ±0.5° .XX ±0.02 [±0.51] .XXX ±0.005 [±0.127] .XXXX ±0.0005 [±0.0127] REMOVE BURRS & BREAK SHARP EDGES .003/.015 [0.076/.381] CORNER FILLETS .02 [51] MACHINED SURFACES 125/3.2 mm SHOWN IN [BRACKETS]	DATE: 08/10/2016	
ECO DESCRIPTION				APPROVED BY: D. JAMORA	DESCRIPTION MODEL-IHP-256JM OUTLINE
COPYRIGHT REGAL BELOIT AMERICA, INC. ALL RIGHTS RESERVED. REGAL BELOIT AMERICA, INC. (OWNER) AND CONTAINS OWNER'S PROPRIETARY INFORMATION. ANY PERSON, CORPORATION OR OTHER FIRM RECEIVING IT IS DEEMED, BY RECEIVING IT, TO AGREE THAT IT, AND/OR ANY PART OF IT, SHALL NOT BE DISCLOSED TO ANY PERSON, CORPORATION OR OTHER ENTITY, DUPLICATED, AND/OR USED, EXCEPT AS EXPRESSLY APPROVED IN WRITING IN ADVANCE BY OWNER. THIS DOCUMENT SHALL BE RETURNED TO OWNER UPON REQUEST. IT MAY BE SUBJECT TO CERTAIN RESTRICTIONS UNDER APPLICABLE EXPORT CONTROL LAWS AND REGULATIONS.				DATE: 08/10/2016	MATERIAL
				REFERENCE	PROCESS/FINISH
				THIRD ANGLE PROJECTION	SIZE DWG NO C 610-0012
					SHEET 1




MARATHON ELECTRIC CORPORATION

TYPICAL PERFORMANCE CURVE for AC MOTOR

Customer

Curve at

200

Volts

 HP 25.00

 PHASE 3

 Model No 256TTDR16002
60

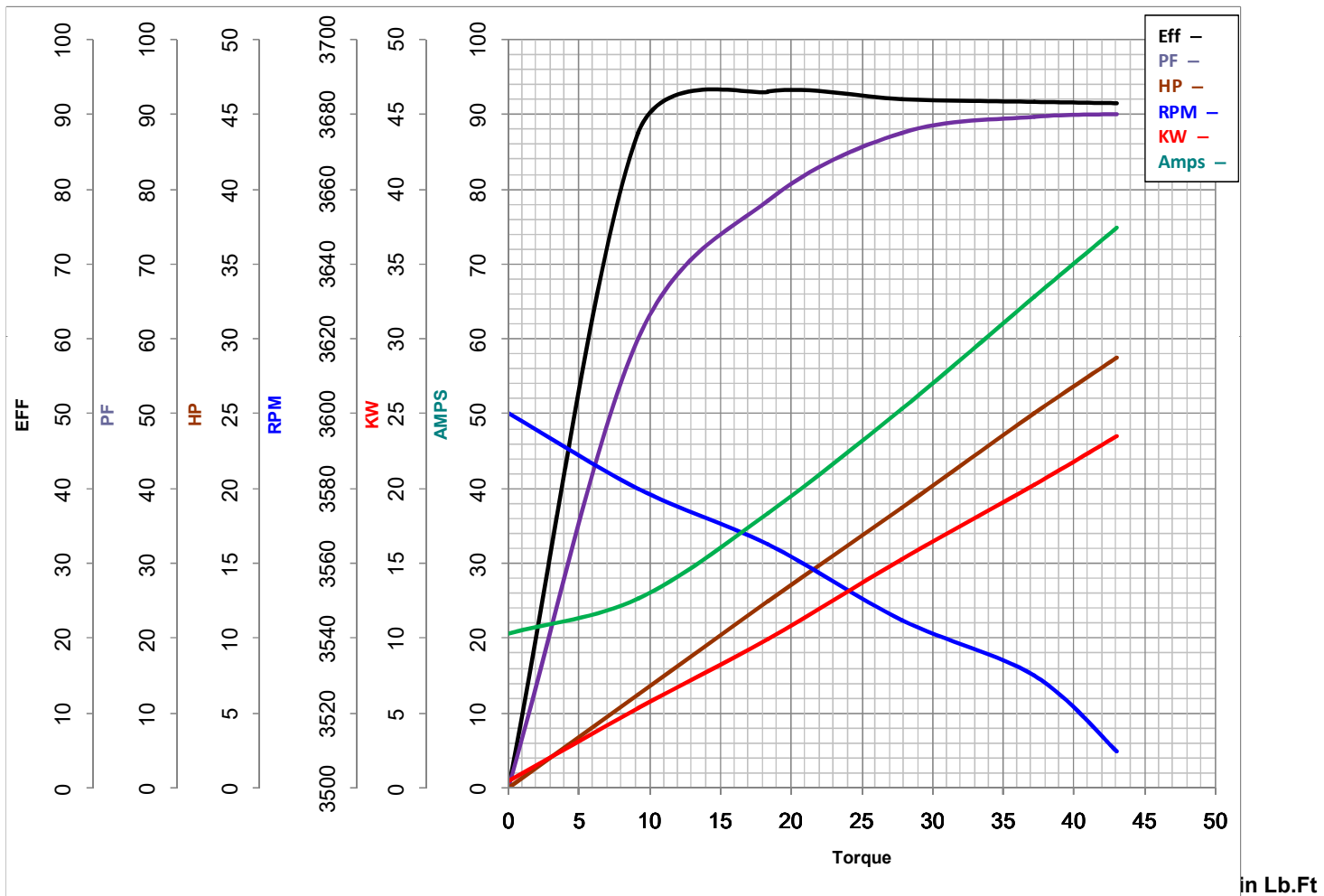
HZ

 VOLTS 200
25

HP

 Catalog No U102A

 HZ 60

 RPM 3525

 FL TORQUE 37.2 Lb.Ft

 BD TORQUE 94.5 Lb.Ft

 LR TORQUE 51.7 Lb.Ft

 FL AMPS 65.5

 PU TORQUE 46.5 Lb.Ft

 LR AMPS 384.1

WINDING BHR2T01-2

Date 1/7/2019