

# PRODUCT INFORMATION PACKET

Model No: 256TTDN16082

Catalog No: M711

Vertical Pump Motor, 10 HP, 3 Ph, 60 Hz, 230/460 V, 1200 RPM, 256HPV Frame, DP



Regal and Marathon are trademarks of Regal Rexnord Corporation or one of its affiliated companies.

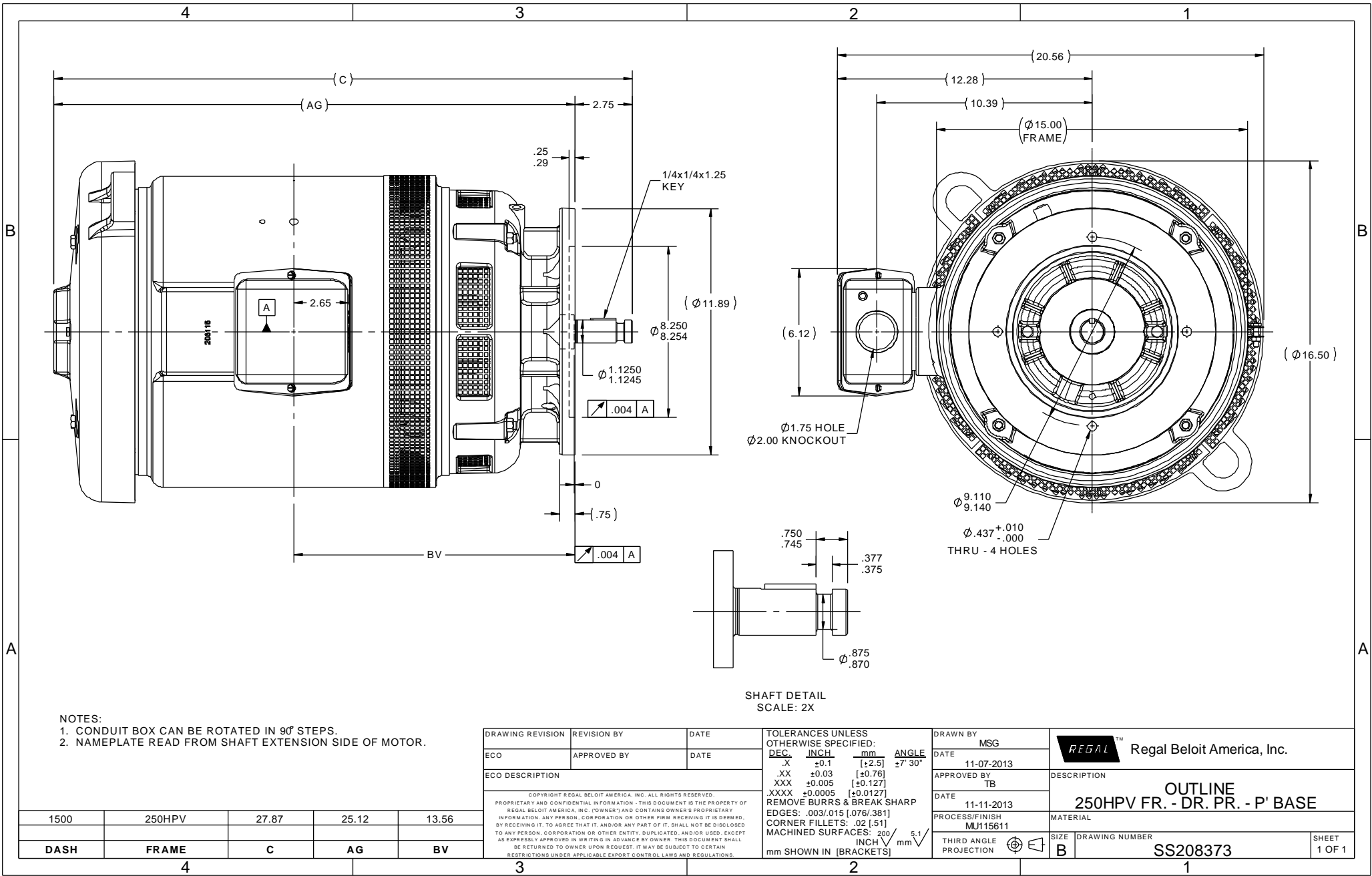
©2022 Regal Rexnord Corporation, All Rights Reserved. MC017097E

### Nameplate Specifications

|                        |                      |                            |                   |
|------------------------|----------------------|----------------------------|-------------------|
| Output HP              | <b>10 Hp</b>         | Output KW                  | <b>7.5 kW</b>     |
| Frequency              | <b>60 Hz</b>         | Voltage                    | <b>230/460 V</b>  |
| Current                | <b>26.0/13.0 A</b>   | Speed                      | <b>1172 rpm</b>   |
| Service Factor         | <b>1.15</b>          | Phase                      | <b>3</b>          |
| Efficiency             | <b>91.7 %</b>        | Power Factor               | <b>80</b>         |
| Duty                   | <b>Continuous</b>    | Insulation Class           | <b>F</b>          |
| Design Code            | <b>B</b>             | KVA Code                   | <b>H</b>          |
| Frame                  | <b>256HPV</b>        | Enclosure                  | <b>Drip Proof</b> |
| Thermal Protection     | <b>No Protection</b> | Ambient Temperature        | <b>40 °C</b>      |
| Drive End Bearing Size | <b>6311</b>          | Opp Drive End Bearing Size | <b>7308</b>       |
| UL                     | <b>Recognized</b>    | CSA                        | <b>Y</b>          |
| CE                     | <b>Y</b>             | IP Code                    | <b>22</b>         |
| Number of Speeds       | <b>1</b>             |                            |                   |

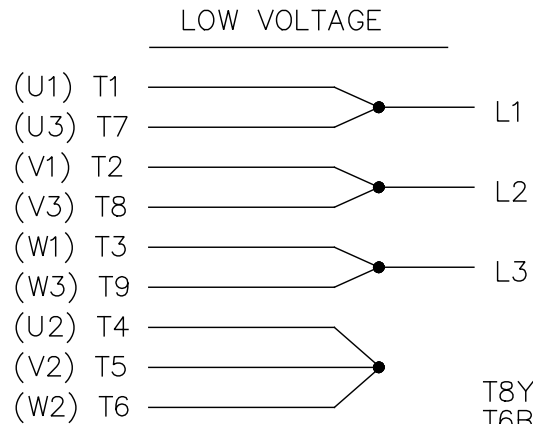
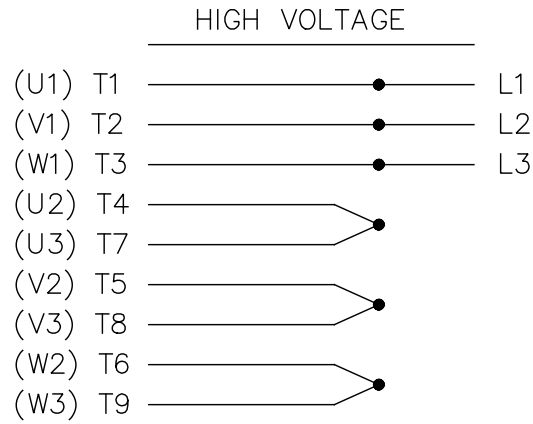
### Technical Specifications

|                       |                                    |                       |                        |
|-----------------------|------------------------------------|-----------------------|------------------------|
| Electrical Type       | <b>Squirrel Cage Induction Run</b> | Starting Method       | <b>Across The Line</b> |
| Poles                 | <b>6</b>                           | Rotation              | <b>Reversible</b>      |
| Resistance Main       | <b>1.035 Ohms</b>                  | Mounting              | <b>Round</b>           |
| Motor Orientation     | <b>Shaft Down</b>                  | Drive End Bearing     | <b>Ball</b>            |
| Opp Drive End Bearing | <b>Ball</b>                        | Frame Material        | <b>Cast Iron</b>       |
| Shaft Type            | <b>HP</b>                          | Overall Length        | <b>27.87 in</b>        |
| Frame Length          | <b>15.00 in</b>                    | Shaft Diameter        | <b>1.125 in</b>        |
| Shaft Extension       | <b>2.75 in</b>                     | Assembly/Box Mounting | <b>F1/F2 CAPABLE</b>   |
| Outline Drawing       | <b>B-SS208373-1500</b>             | Connection Drawing    | <b>A-EE7308</b>        |



EE7308

THREE PHASE  
DUAL VOLTAGE MOTOR



VIEW OF TERMINAL END

REF.  
WINDING DIAGRAM

T8Y, T2Y, T2BL, T4BX, T2EC, T2G  
T6BZ, T2B, T6BL, T4AV, T6B, T4B

OPTIONAL CORD  
CONNECTION

L1 — WHITE  
L2 — RED  
L3 — BLACK

| NO.  | REVISION                                       | BY & DATE      | CHK | ANG   | TOLERANCES<br>UNLESS SPECIFIED |        | FINISH                   | DRAWN RM 11/20/1990 |        |                    |           |        |
|--|--|----------------|-----|-------|--------------------------------|--------|--------------------------|---------------------|--------|--------------------|-----------|--------|
|  |  |                |     |       | DEC.                           | INCHES |                          |                     |        |                    |           |        |
| 5  | CHG TO REGAL LOGO                              | SL 09/10/2015  | AB  |       |                                |        |                          | CHK ML 11/21/1990   |        |                    |           |        |
| 4  | REVISED IEC NOTATIONS                          | MSG 11/15/2011 | CMN | .X    | ±.1                            |        |                          | APPD SAS 04/24/2003 |        |                    |           |        |
| 3  | ADDED IEC NOTATIONS... (U1), (V1) ETC. MU95194 | MSG 5/10/2010  | MJS | .XX   | ±.02                           |        | TITLE CONNECTION DIAGRAM | SCALE 1=1           |        |                    |           |        |
| 2  | ADDED THE OPTIONAL CORD CONNECTION MU46318     | RDH 04/24/2003 | DRS | .XXX  | ±.005                          |        | 3Ø - DUAL VOLTAGE MOTOR  | REF                 |        |                    |           |        |
| 1  | REDRAWN  | RM 11/20/1990  |     | .XXXX | ±.0005                         |        | MAT'L.                   | FMF                 |        |                    |           |        |
|  |  |                |     |       | ±7'30"                         |        |                          | PREV                |        |                    |           |        |
| THIS DRAWING IN DESIGN AND DETAIL IS OUR PROPERTY AND MUST NOT BE USED EXCEPT IN CONNECTION WITH OUR WORK ALL RIGHTS OF DESIGN AND INVENTION ARE RESERVED THIS IS AN ELECTRONICALLY GENERATED DOCUMENT - DO NOT SCALE THIS PRINT |  |                |     |       |                                |        | RFP                      | CAD FILE ee7308     | SIZE A | DRAWING NO. EE7308 | PAGE OF 5 | REV. 5 |
|  |  |                |     |       |                                |        | DIST WP                  |                     |        |                    |           |        |





P.O. BOX 8003  
WAUSAU, WI 54401-8003  
PH. 715-675-3311

DATA VOLTS: 460

**CERTIFICATION DATA SHEET**

CUSTOMER: \_\_\_\_\_ CUSTOMER P.O. #: \_\_\_\_\_  
 ORDER #: \_\_\_\_\_ REFERENCE MODEL #: 256TTDN16082  
 CONN. DIAGRAM: A-EE7308 CAT #: M711  
 OUTLINE: B-SS208373-1500 CUSTOMER PART #: \_\_\_\_\_  
 WINDING: 2566144 NONE 6 MOUNTING: F1/F2 CAPABLE  
 SPEED: \_\_\_\_\_

**TYPICAL MOTOR PERFORMANCE DATA**

| HP | KW  | SYNC RPM | FL RPM | FRAME  | ENCLOSURE | TYPE | KVA CODE | DESIGN |
|----|-----|----------|--------|--------|-----------|------|----------|--------|
| 10 | 7.5 | 1200     | 1172   | 256HPV | DP        | TDN  | H        | B      |

| PH | HZ | VOLTS   | AMPS  | START TYPE      | DUTY | INSL | S.F. | AMB | ELEV. |
|----|----|---------|-------|-----------------|------|------|------|-----|-------|
| 3  | 60 | 230/460 | 26/13 | ACROSS THE LINE | CONT | F    | 1.15 | 40  | 3300  |

| F.L. EFF | 91.7 | 3/4 LD EFF | 91.7 | 1/2 LD EFF | 90.2 | GTD EFF | 90.2 | ELECT. TYPE | SQ CAGE IND RUN |
|----------|------|------------|------|------------|------|---------|------|-------------|-----------------|
| F.L. PF  | 80.0 | 3/4 LD PF  | 75.0 | 1/2 LD PF  | 65.0 |         |      |             |                 |

| F.L. TORQUE | LR AMPS @ 460 V | L.R. TORQUE     | B.D. TORQUE    | F.L. RISE (°C) |
|-------------|-----------------|-----------------|----------------|----------------|
| 44.7 LB-FT  | 80.0            | 92.0 LB-FT 206% | 120 LB-FT 268% | 45             |

| @ 3 FT. | POWER  | ROTOR WK <sup>2</sup>   | MAX. LOAD WK <sup>2</sup> | SAFE STALL TIME | STARTS/HOUR | MOTOR WGT |
|---------|--------|-------------------------|---------------------------|-----------------|-------------|-----------|
| 56 dBA  | 65 dBA | 2.90 LB-FT <sup>2</sup> | 225 LB-FT <sup>2</sup>    | 20 SEC.         | 2           | 0 LB.     |

\*\*\* SUPPLEMENTAL INFORMATION \*\*\*

| DE BRACKET TYPE | ODE BRACKET TYPE | MOUNT TYPE | MOTOR ORIENTATION | SEVERE DUTY | HAZARDOUS LOCATION | DRIP COVER | SCREENS | PAINT         |
|-----------------|------------------|------------|-------------------|-------------|--------------------|------------|---------|---------------|
| P-BASE          | STANDARD         | ROUND      | SHAFT DOWN        | NO          | NONE               | YES        | RODENT  | BLUE (ENAMEL) |

| BEARINGS |         | GREASE     | SHAFT TYPE | SPECIAL DE | SPECIAL ODE | SHAFT MATERIAL          | FRAME MATERIAL |
|----------|---------|------------|------------|------------|-------------|-------------------------|----------------|
| BALL     | EM ANGU | POLYREX EM | HP         | NONE       | NONE        | 1045 HOT ROLLED (C-204) | CAST IRON      |
| 6311     | 7308    |            |            |            |             |                         |                |

| THERMOSTATS | PROTECTORS | WDG RTD's | BRG RTD's | THERMISTORS | CONTROL | SPACE HEATERS |
|-------------|------------|-----------|-----------|-------------|---------|---------------|
| NONE        | NOT        | NONE      | NONE      | NONE        | FALSE   | NA            |

| R1 (ohms/ph) | R2 (ohms/ph) | X1 (ohms/ph) | X2 (ohms/ph) | Xm (ohms/ph) | VIBRATION (in/sec) | FLOAT |
|--------------|--------------|--------------|--------------|--------------|--------------------|-------|
| 0.596        | 0.511        | 2.4          | 2.386        | 46.434       | 0.150              | ODE   |

|       |       |  |
|-------|-------|--|
| NOTES | _____ | INVERTER TORQUE: NONE<br>INV. HP SPEED RANGE: NONE |
|       | _____ |  |
|       | _____ |  |
|       | _____ |  |
|       | _____ |  |

|  |   |
|--|---|
| PREPARED BY: FAREEDA DUDEKULA<br>DATE: 9/11/2018 | BRAKE: NONE<br>NONE NONE<br>FT-LB: NA<br>VOLTAGE: NONE HZ:<br>UL: V-INS, CONST UL REC |
|--|---|

FORM: 3531 REV\_4 2/27/06

Data Sheet

256TTDN16082

Date: 11/30/2018  
 Customer: \_\_\_\_\_  
 Attention: \_\_\_\_\_  
 Submitted by: FAREEDA DUDEKULA



Submittal

Data @ 460 V

Motor Load Data

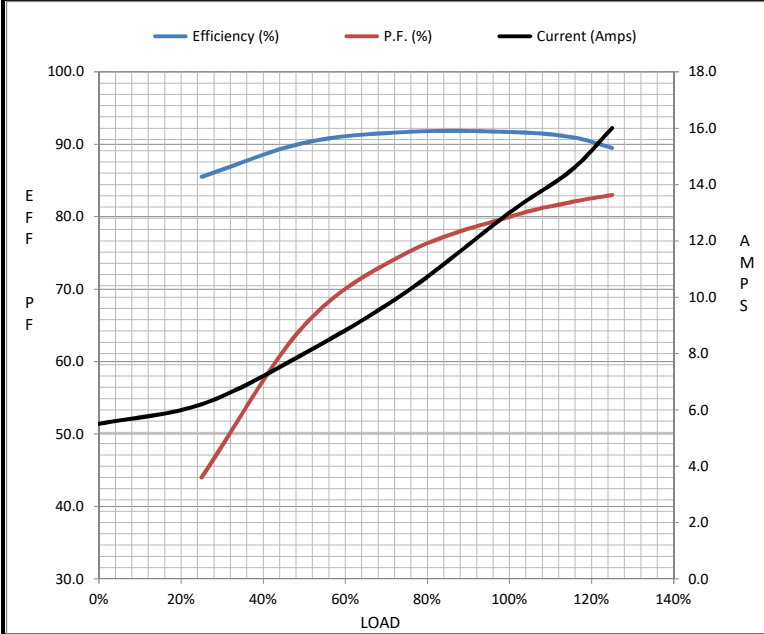
| Load           | 0%   | 25%  | 50%  | 75%  | 100% | 115%  | 125% | LR   |
|----------------|------|------|------|------|------|-------|------|------|
| Current (Amps) | 5.5  | 6.2  | 8.0  | 10.2 | 13.0 | 14.5  | 16.0 | 80.0 |
| Torque (ft-lb) | 0.00 | 11.0 | 22.0 | 33.5 | 44.7 | 51.0  | 56.0 | 92.0 |
| RPM            | 1200 | 1192 | 1185 | 1180 | 1172 | 1,168 | 1164 | 0    |
| Efficiency (%) |      | 85.5 | 90.2 | 91.7 | 91.7 | 91.0  | 89.5 |      |
| P.F. (%)       | 5.5  | 44.0 | 65.0 | 75.0 | 80.0 | 82.0  | 83.0 | 42.0 |

Motor Speed Data

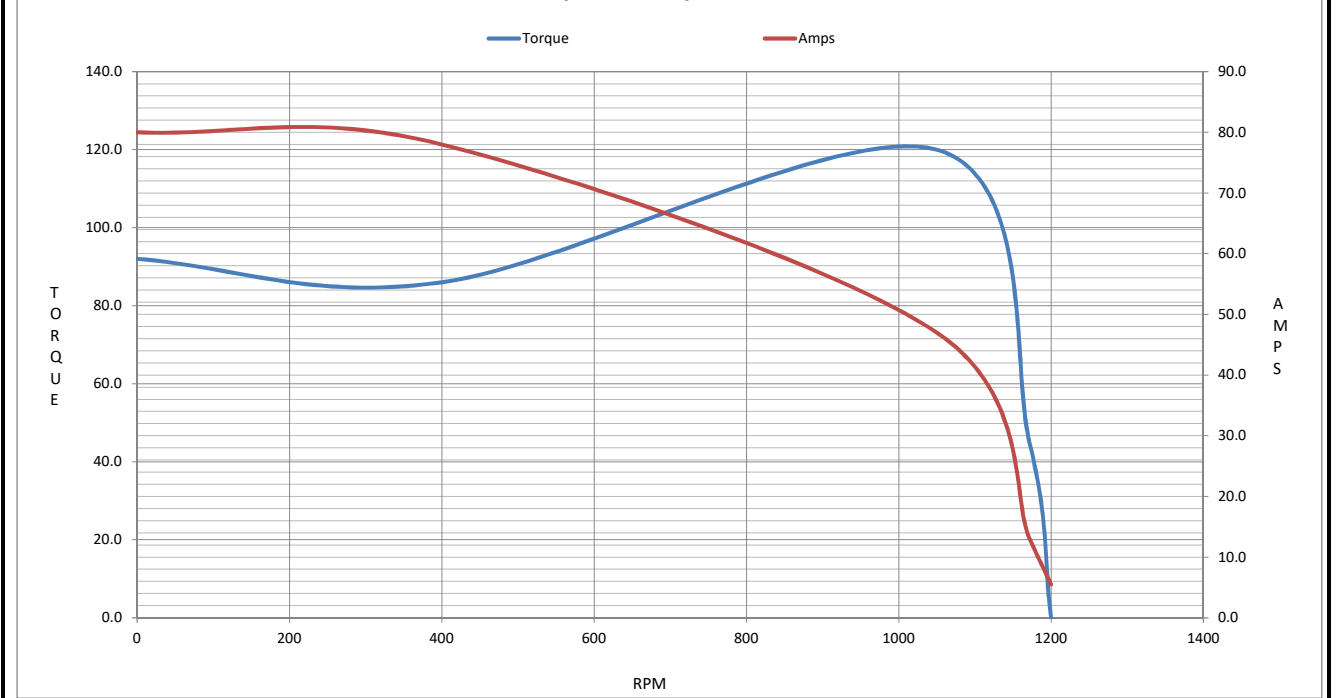
|                | LR   | Pull-Up | BD   | Rated | Idle |
|----------------|------|---------|------|-------|------|
| Speed (RPM)    | 0    | 400     | 1050 | 1172  | 1200 |
| Current (Amps) | 80.0 | 78.0    | 47.0 | 13.0  | 5.5  |
| Torque (ft-lb) | 92.0 | 86.0    | 120  | 44.7  | 0.00 |

Information Block

|                             |                         |        |        |         |
|-----------------------------|-------------------------|--------|--------|---------|
| HP                          | 10.0                    |        |        |         |
| Sync. RPM                   | 1200                    |        |        |         |
| Frame                       | 256                     |        |        |         |
| Enclosure                   | DP                      |        |        |         |
| Construction                | TDS                     |        |        |         |
| Voltage                     | 230/460 V               |        |        |         |
| Frequency                   | 60 Hz                   |        |        |         |
| Design                      | B                       |        |        |         |
| LR Code letter              | H                       |        |        |         |
| Service Factor              | 1.15                    |        |        |         |
| Temp Rise @ FL              | 45 °C                   |        |        |         |
| Duty                        | CONT                    |        |        |         |
| Ambient                     | 40 °C                   |        |        |         |
| Elevation                   | 1,000 feet              |        |        |         |
| Rotor/Shaft wk <sup>2</sup> | 2.90 Lb-Ft <sup>2</sup> |        |        |         |
| Ref Wdg                     | 2566144 NONE            |        |        |         |
| Sound Pressure @ 1M         | 56 dBA                  |        |        |         |
| VFD Rating                  | NONE                    |        |        |         |
| Outline Dwg                 | B-SS208373-1500         |        |        |         |
| Conn. Diag                  | A-EE7308                |        |        |         |
| Additional Specifications:  |                         |        |        |         |
| 0                           |                         |        |        |         |
| 0                           |                         |        |        |         |
| EQUIV CKT (OHMS / PHASE)    |                         |        |        |         |
| R1                          | R2                      | X1     | X2     | Xm      |
| 0.5960                      | 0.5110                  | 2.4000 | 2.3860 | 46.4340 |



Speed - Torque Curve



## EC Declaration of Conformity

The undersigned representing  
the manufacturer:

Regal Beloit America  
100 East Randolph St.  
Wausau, WI 54401

and the authorized representative  
established within the Community:

Marathon Electric UK  
6F Thistleton Road Ind. Estate  
Market Overton  
Oakham, Rutland LE15 7PP UK

are committed to providing customers with products that comply with applicable regulations and international protocols to which they are subject, including the requirements of the European Parliament Directive on the Harmonization of the laws relating to electrical equipment designed for use within certain voltage limits (2014/35/EU).

Regal Beloit America declares that the following product(s), to which this declaration relates, are in conformity with the relevant sections of the EC standards listed below.

This statement supersedes any statements previously issued pertaining to the product(s) listed below and is subject to change without notice.

Model No : 256TTDN16082

(Model No. may contain prefix and/or suffix characters)

Catalog No : M711

Rework No : N/A

Directives :

Low Voltage Directive 2014/35/EU

Harmonized Standards Used :

EN 60034-1: 2010 (IEC 60034-1: 2010)

EN 60034-5: 2001/A1:2007 (IEC 60034-5: 2000/A1:2006)

Authorized Representative:



Michael A. Logsdon  
Vice President, Technology

Authorized Representative in the Community:



Julian Clark  
Marketing Engineer

Created on 09/01/2022

**CE 22**