

PRODUCT INFORMATION PACKET

marathon[®]
Motors

Model No: 256TTDN14102

Catalog No: H187A

7.50 HP General Purpose Motor, 3 phase, 900 RPM, 230/460 V, 256T Frame, ODP
General Purpose Motors

Regal and Marathon are trademarks of Regal Rexnord Corporation or one of its affiliated companies.
©2021 Regal Rexnord Corporation, All Rights Reserved. MC017097E

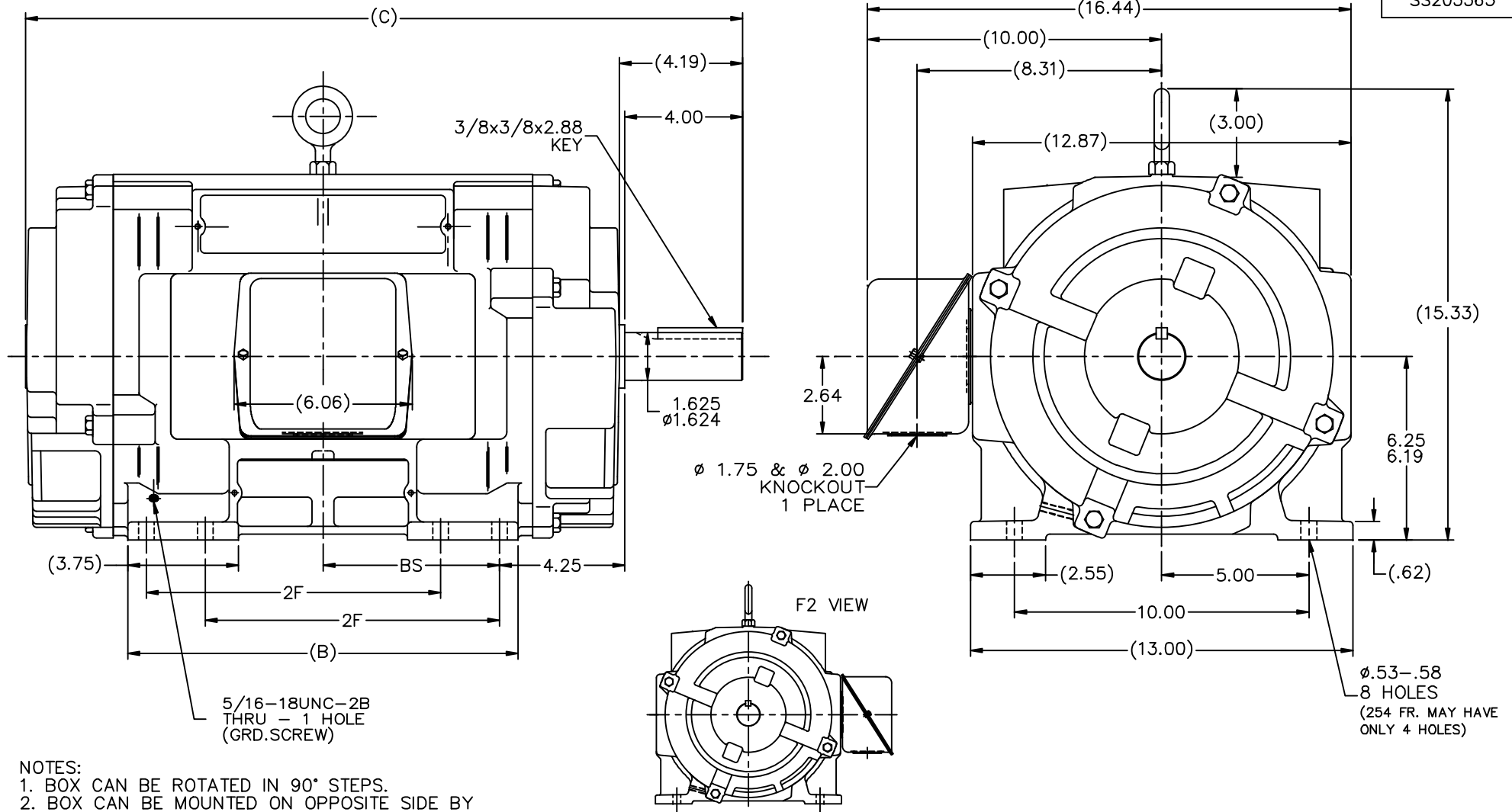
RegalRexnord

Nameplate Specifications

Output HP	7.50 Hp	Output KW	5.6 kW
Frequency	60 Hz	Voltage	230/460 V
Current	22.0/11.0 A	Speed	875 rpm
Service Factor	1.15	Phase	3
Efficiency	88.5 %	Power Factor	73
Duty	Continuous	Insulation Class	F
Design Code	B	KVA Code	F
Frame	256T	Enclosure	Drip Proof
Thermal Protection	No	Ambient Temperature	40 °C
Drive End Bearing Size	6309	Opp Drive End Bearing Size	6208
UL	Recognized	CSA	Y
CE	Y	IP Code	22
Number of Speeds	1		

Technical Specifications

Electrical Type	Squirrel Cage Induction Run	Starting Method	Across The Line
Poles	8	Rotation	Reversible
Resistance Main	1.37 Ohms	Mounting	Rigid Base
Motor Orientation	Horizontal	Drive End Bearing	Ball
Opp Drive End Bearing	Ball	Frame Material	Cast Iron
Shaft Type	T	Overall Length	24.37 in
Frame Length	14.25 in	Shaft Diameter	1.625 in
Shaft Extension	4 in	Assembly/Box Mounting	F1/F2 Capable
Outline Drawing	B-SS203365-1425	Connection Drawing	A-EE7308



- NOTES:
1. BOX CAN BE ROTATED IN 90° STEPS.
 2. BOX CAN BE MOUNTED ON OPPOSITE SIDE BY REMOVING BRACKETS AND TURNING FRAME 180°
 3. NAMEPLATE TO BE READ FROM CONDUIT BOX SIDE OF MOTOR.

DASH	FRAME	B	C	2F	BS
1275	254T	11.75	22.87	8.25	5.25
1425	256T	13.25	24.37	10.00	6.00

		TOLERANCES UNLESS SPECIFIED		MARATHON ELECTRIC		DRAWN BLR 9/8/1998				
NO.	REVISION	BY & DATE	CHK	ANG	FINISH	SCALE	PREV			
11	CORRECTED '2F' REMOVED '2FF'	SJW 1/3/2012	SJW	DEC.	INCHES		CHK ML 9/10/1998			
10	ADDED 'F2' VIEW MU104104	MSG 8/23/2011	SW	.X	±.1		APPD TB 9/10/1998			
9	REVISED KNOCKOUT DIM. C'BOX CN28427	MSG 8/15/2000		.XX	±.03	TITLE OUTLINE	SCALE 5=16			
8	REVISED CONDUIT BOX CN28427	MSG 8/2/2000		.XXX	±.005	250T FR. - DR.PR. - CAST IRON	REF			
7	UPDATED TO NEC CONDUIT BOX MU31052	BJW 6/5/2000		.XXXX	±.0005	MAT'L	FMF			
					±7'30"		PREV			
THIS DRAWING IN DESIGN AND DETAIL IS OUR PROPERTY AND MUST NOT BE USED EXCEPT IN CONNECTION WITH OUR WORK ALL RIGHTS OF DESIGN AND INVENTION ARE RESERVED THIS IS AN ELECTRONICALLY GENERATED DOCUMENT - DO NOT SCALE THIS PRINT						CAD FILE SS203365	SIZE B	DRAWING NO. SS203365	PAGE 1 OF 1	REV. 11
						RFP				
						DIST LB				

EE7308

THREE PHASE
DUAL VOLTAGE MOTOR



VIEW OF TERMINAL END

REF.
WINDING DIAGRAM

T8Y, T2Y, T2BL, T4BX, T2EC, T2G
T6BZ, T2B, T6BL, T4AV, T6B, T4B

OPTIONAL CORD
CONNECTION

L1 — WHITE
L2 — RED
L3 — BLACK

NO.	REVISION	BY & DATE	CHK	ANG	TOLERANCES UNLESS SPECIFIED		FINISH	DRAWN RM 11/20/1990				
					DEC.	INCHES						
5	CHG TO REGAL LOGO	SL 09/10/2015	AB					CHK ML 11/21/1990				
4	REVISED IEC NOTATIONS	MSG 11/15/2011	CMN	.X	±.1			APPD SAS 04/24/2003				
3	ADDED IEC NOTATIONS... (U1), (V1) ETC. MU95194	MSG 5/10/2010	MJS	.XX	±.02			SCALE 1=1				
2	ADDED THE OPTIONAL CORD CONNECTION MU46318	RDH 04/24/2003	DRS	.XXX	±.005		TITLE CONNECTION DIAGRAM 3Ø - DUAL VOLTAGE MOTOR	REF				
1	REDRAWN	RM 11/20/1990		.XXXX	±.0005		MAT'L.	FMF				
					±7'30"			PREV				
THIS DRAWING IN DESIGN AND DETAIL IS OUR PROPERTY AND MUST NOT BE USED EXCEPT IN CONNECTION WITH OUR WORK ALL RIGHTS OF DESIGN AND INVENTION ARE RESERVED THIS IS AN ELECTRONICALLY GENERATED DOCUMENT - DO NOT SCALE THIS PRINT							RFP	CAD FILE ee7308	SIZE A	DRAWING NO. EE7308	PAGE OF 5	REV. 5
							DIST WP					



Regal Beloit America, Inc.