

PRODUCT INFORMATION PACKET

marathon®
Motors

Model No: 256TTDBD6092

Catalog No: GT0558

10 HP Close-Coupled Pump Motor, 3 phase, 1200 RPM, 575 V, 256JMV Frame, ODP

Close-Coupled Pump Motors



Regal and Marathon are trademarks of Regal Rexnord Corporation or one of its affiliated companies.
©2021 Regal Rexnord Corporation, All Rights Reserved. MC017097E

RegalRexnord

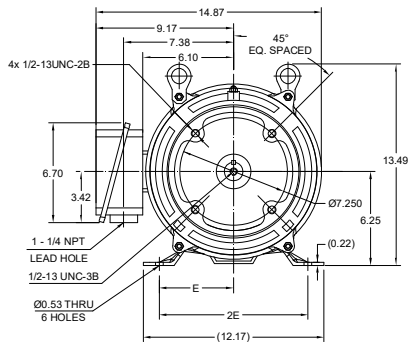
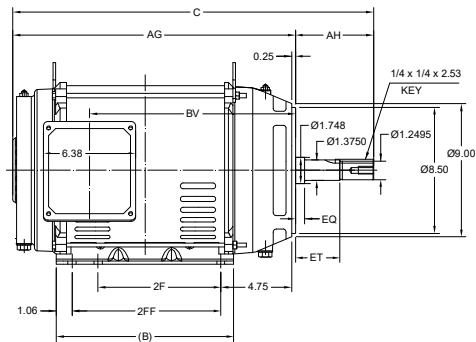
Nameplate Specifications

| | | | |
|------------------------|------------|----------------------------|------------|
| Output HP | 10 Hp | Output KW | 7.5 kW |
| Frequency | 60 Hz | Voltage | 575 V |
| Current | 10.3 A | Speed | 1182 rpm |
| Service Factor | 1.15 | Phase | 3 |
| Efficiency | 91.7 % | Power Factor | 80 |
| Duty | Continuous | Insulation Class | F |
| Design Code | B | KVA Code | H |
| Frame | 256JM | Enclosure | Drip Proof |
| Thermal Protection | No | Ambient Temperature | 40 °C |
| Drive End Bearing Size | 6309 | Opp Drive End Bearing Size | 6208 |
| UL | Recognized | CSA | Y |
| CE | Y | IP Code | 22 |
| Number of Speeds | 1 | | |

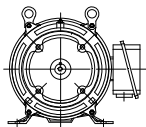
Technical Specifications

| | | | |
|-----------------------|------------------------------|-----------------------|---------------------|
| Electrical Type | Squirrel Cage Inverter Rated | Starting Method | Line Or Inverter |
| Poles | 6 | Rotation | Selective Clockwise |
| Resistance Main | 1.066 Ohms | Mounting | Rigid Base |
| Motor Orientation | Horizontal | Drive End Bearing | Ball |
| Opp Drive End Bearing | Ball | Frame Material | Rolled Steel |
| Shaft Type | JM | Overall Length | 25.99 in |
| Frame Length | 12.20 in | Shaft Diameter | 1.249 in |
| Shaft Extension | 5.5 in | Assembly/Box Mounting | F1/F2 CAPABLE |
| Inverter Load | CONSTANT 2:1/VARIABLE 10:1 | | |
| Outline Drawing | SS620822-200 | Connection Drawing | EE7300 |

| DASH NO. | B | C | E | 2E | 2F | 2FF | AG | AH | BV | EQ | ET | MOUNTING | FRAME |
|----------|-------|-------|------|-------|------|-------|-------|-------|-------|------|------|----------|-------|
| 100 | 11.93 | 24.46 | 5.00 | 10.00 | 8.25 | 10.00 | 19.21 | 5.248 | 13.90 | 0.62 | 2.99 | F1 OR F2 | 254JM |
| 200 | | 26.04 | | | | | 20.79 | | 15.46 | | | | 256JM |



F2 VIEW



| | | |
|---|--------------------|--------------------------------|
| DRAWING REVISION C | REVISION BY VS | REV DATE/ E DATE 08-03-2021 |
| ECO CR-0001300 | APPROVED BY GNK | DATE 08-03-2021 |
| ECO DESCRIPTION DRAWING UPDATED | | |
| COPYRIGHT (PER REGISTRATION) REGAL BELOIT AMERICA, INC. ALL RIGHTS RESERVED. IMPROPER COPY AND CONSENTATION. INFORMATION. THIS DOCUMENT IS THE PROPERTY OF REGAL BELOIT AMERICA, INC. (OWNER) AND CONTAINS OWNER'S PROPRIETARY INFORMATION. ANY PERSONAL INFORMATION OR OTHER DATA RELAYING IT IS SUBJECT TO ANY PERSONAL INFORMATION AND OTHER DATA. QUALIFIED AND/OR USED. SUBJECT AS EXPRESSLY APPROVED IN WRITING IN ADVANCE BY OWNER. THIS DOCUMENT SHALL BE RETURNED TO OWNER UPON REQUEST. IT MAY BE SUBJECT TO CERTAIN INSTRUCTIONS UNDER APPLICABLE REPORT CONTROL LAWS AND REGULATIONS. | | |

PRIMARY DIMENSIONS ARE INCH
DIMENSIONS IN [BRACKETS]
ARE FOR REFERENCE ONLY

| | |
|--------------------|---------------------------|
| DRAWN BY VS | DATE 12-02-2021 |
| APPROVED BY GNK | DATE 12-02-2021 |
| REFERENCE | THIRD ANGLE PROJECTION |

Regal Beloit America, Inc.

DESCRIPTION
OUTLINE
254/256JM FR NEMA ODP RS

MATERIAL PROCESS/FINISH

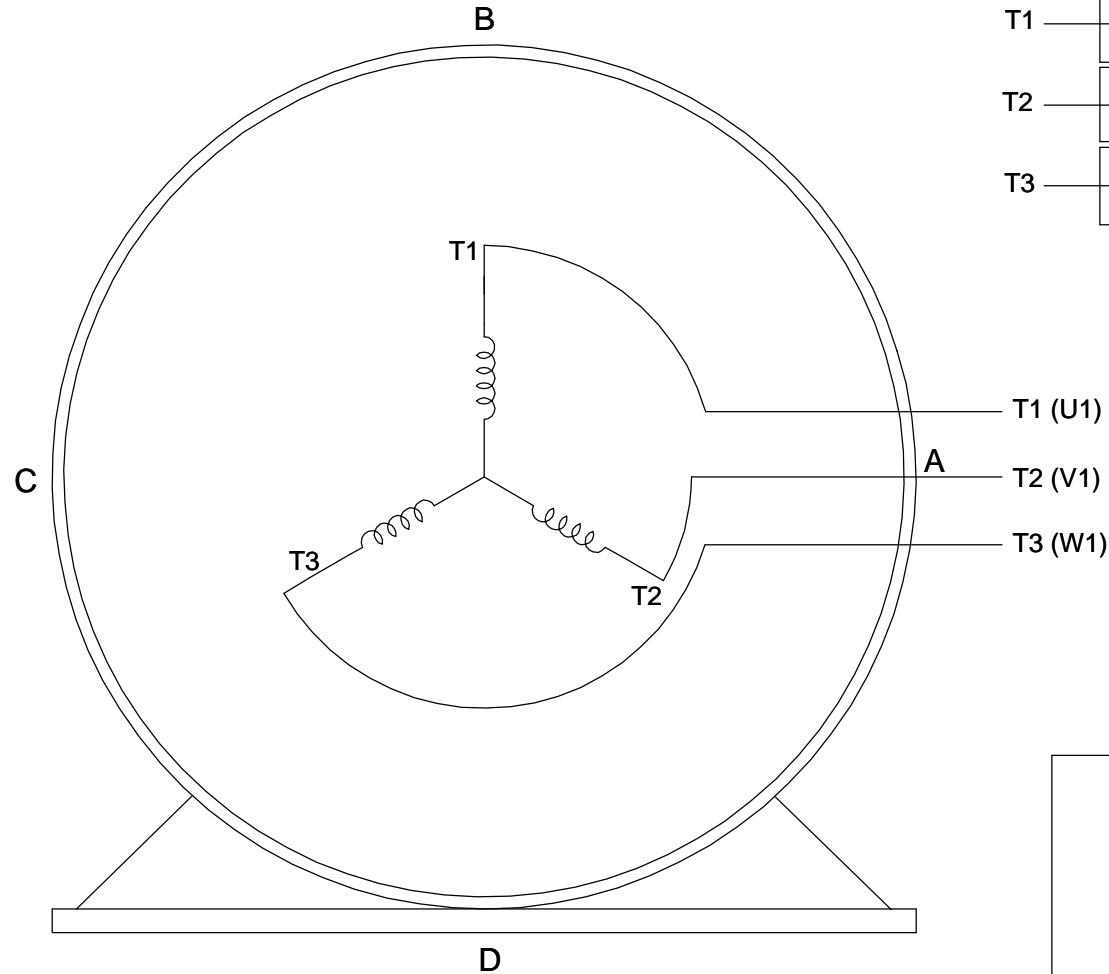
SIZE B DRAWING NUMBER
SS620822

SHEET
1 OF 1

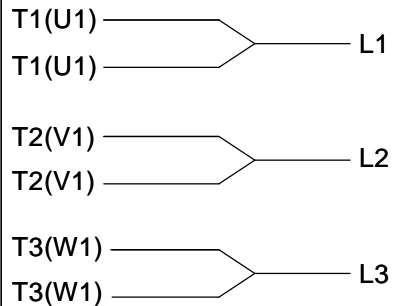
THREE PHASE - SINGLE VOLTAGE MOTOR - CONDUIT BOX @ 'A'

TO REVERSE ROTATION:
INTERCHANGE ANY TWO
LINE LEAD CONNECTIONS.

TERMINAL BLOCK WHEN SPECIFIED



IF MOTOR HAS 6 LEADS



A-9806 DECAL

OPTIONAL CORD CONNECTION



VIEW OF TERMINAL END

| | | |
|---|--------------------|--------------------|
| DRAWING REVISION AB | REVISION BY JJB | DATE 06-27-2017 |
| ECO ECO-0125361 | APPROVED BY TB | DATE 06-27-2017 |
| ECO DESCRIPTION UPDATED TO CURRENT STANDARDS | | |
| <small>COPYRIGHT REGAL BELOIT AMERICA, INC. ALL RIGHTS RESERVED. PROPRIETARY AND CONFIDENTIAL INFORMATION - THIS DOCUMENT IS THE PROPERTY OF REGAL BELOIT AMERICA, INC. ("OWNER") AND CONTAINS OWNER'S PROPRIETARY INFORMATION. ANY PERSON, CORPORATION OR OTHER FIRM RECEIVING IT IS DEEMED, BY RECEIVING IT, TO AGREE THAT IT, AND/OR ANY PART OF IT, SHALL NOT BE DISCLOSED TO ANY PERSON, CORPORATION OR OTHER ENTITY, DUPLICATED, AND/OR USED, EXCEPT AS EXPRESSLY APPROVED IN WRITING IN ADVANCE BY OWNER. THIS DOCUMENT SHALL BE RETURNED TO OWNER UPON REQUEST. IT MAY BE SUBJECT TO CERTAIN RESTRICTIONS UNDER APPLICABLE EXPORT CONTROL LAWS AND REGULATIONS.</small> | | |

| |
|---------------------------|
| DRAWN BY DA |
| DATE 03-26-1993 |
| APPROVED BY TB |
| DATE 03-26-1993 |
| REFERENCE |
| THIRD ANGLE PROJECTION |



Regal Beloit America, Inc.

DESCRIPTION
CONNECTION DIAGRAM
EXTERNAL - SINGLE VOLTAGE - 3Ø MOTOR

MATERIAL PROCESS/FINISH

| | | |
|-----------|--------------------------|-----------------|
| SIZE A | DRAWING NUMBER EE7300 | SHEET 1 OF 1 |
|-----------|--------------------------|-----------------|

Uncontrolled Copy



**P.O. BOX 8003
WAUSAU, WI 54401-8003
PH. 715-675-3311**

CERTIFICATION DATA SHEET**CUSTOMER:****CUSTOMER****ORDER #:****PO#:****CONN. DIAGRAM:** EE7300**MODEL #:** 256TTDBD6092 AA**OUTLINE:** SS620822-256**CUSTOMER PART****WINDING #:** HE31606008 3**#:****MOUNTING:** F1/F2 CAPABLE**TYPICAL MOTOR PERFORMANCE DATA**

| HP | kW | SYNC. RPM | F.L. RPM | FRAME | ENCLOSURE | KVA CODE | DESIGN |
|----|------|-----------|----------|--------|-----------|----------|--------|
| 10 | 7.50 | 1200 | 1182 | 256JMV | DP | H | B |

| PH | Hz | VOLTS | AMPS | START TYPE | DUTY | INSL | S.F. | AMB°C |
|----|----|-------|------|------------------|------------|------|------|-------|
| 3 | 60 | 575 | 10.3 | LINE OR INVERTER | CONTINUOUS | F7 | 1.15 | 40 |

| | | | | | | | | |
|-----------------------|------|----------------------|------|----------------------|------|-----------------|--|-------------------|
| FULL LOAD EFF: | 91.7 | 3/4 LOAD EFF: | 91.7 | 1/2 LOAD EFF: | 90.2 | GTD. EFF | | ELEC. TYPE |
| FULL LOAD PF: | 80 | 3/4 LOAD PF: | 74.5 | 1/2 LOAD PF: | 63 | 91 | | SQ CAGE INV RATED |

| | | | | | | | | |
|--------------------|-------|--------------------------|--|--------------------|-------------|--------------------|-------------|--------------------|
| F.L. TORQUE | | LOCKED ROTOR AMPS | | L.R. TORQUE | | B.D. TORQUE | | F.L. RISE°C |
| 44.5 | LB-FT | 64 | | 93 | LB-FT 209 % | 113 | LB-FT 254 % | 40 |

| SOUND PRESSURE @ 3 FT. | SOUND POWER | ROTOR WK^2 | MAX. WK^2 | SAFE STALL TIME | STARTS / HOUR | APPROX. MOTOR WGT |
|---------------------------|-------------|----------------|----------------|-----------------|------------------|----------------------|
| 62 dBA | 72 dBA | 2.9 LB-FT^2 | 200 LB-FT^2 | 15 SEC. | 2 | 325 LBS. |

***** SUPPLEMENTAL INFORMATION *****

| DE BRACKET TYPE | ODE BRACKET TYPE | MOUNT TYPE | ORIENTATION | SEVERE DUTY | HAZARDOUS LOCATION | DRIP COVER | SCREENS | PAINT |
|-----------------|------------------|------------|--------------------------|-------------|--------------------|------------|---------|---------------|
| C-FACE | STANDARD | RIGID | HORIZONTAL OR SHAFT DOWN | FALSE | NONE | FALSE | NONE | BLUE (ENAMEL) |

| BEARINGS | | GREASE | SHAFT TYPE | SPECIAL DE | SPECIAL ODE | SHAFT MATERIAL | FRAME MATERIAL |
|----------|------|------------|------------|------------|-------------|-------------------------|----------------|
| DE | ODE | | | | | | |
| BALL | BALL | POLYREX EM | JM | NONE | NONE | 1045 HOT ROLLED (C-204) | ROLLED STEEL |
| 6309 | 6208 | | | | | | |

| THERMO-PROTECTORS | | | | THERMISTORS | CONTROL | SPACE HEATERS |
|-------------------|------------|----------|----------|-------------|---------|---------------|
| THERMOSTATS | PROTECTORS | WDG RTDs | BRG RTDs | | | |
| NONE | NOT | NONE | NONE | NONE | FALSE | NONE VOLTS |

*

N

O

T

E

S

INVERTER**TORQUE:** CONSTANT 2:1/VARIABLE 20:1**INV. HP SPEED RANGE:** NONE**ENCODER:** NONE

NONE NONE

NONE NONE PPR

BRAKE: NONE NONE

NONE P/N NONE

NONE NONE

NONE FT-LB NONE V NONE Hz

*

PREPARED BY: Anusha Muthyala

DATE: 05/03/2018 11:54:04 PM

FORM 3531 REV.3 02/07/99

** Subject to change without notice.

