

# PRODUCT INFORMATION PACKET

Model No: 256THTNA18601  
Catalog No: 256THTNA18601  
7.5,900,TENV,256T,3/60/460

Regal and are trademarks of Regal Rexnord Corporation or one of its affiliated companies.  
©2022 Regal Rexnord Corporation, All Rights Reserved. MC017097E



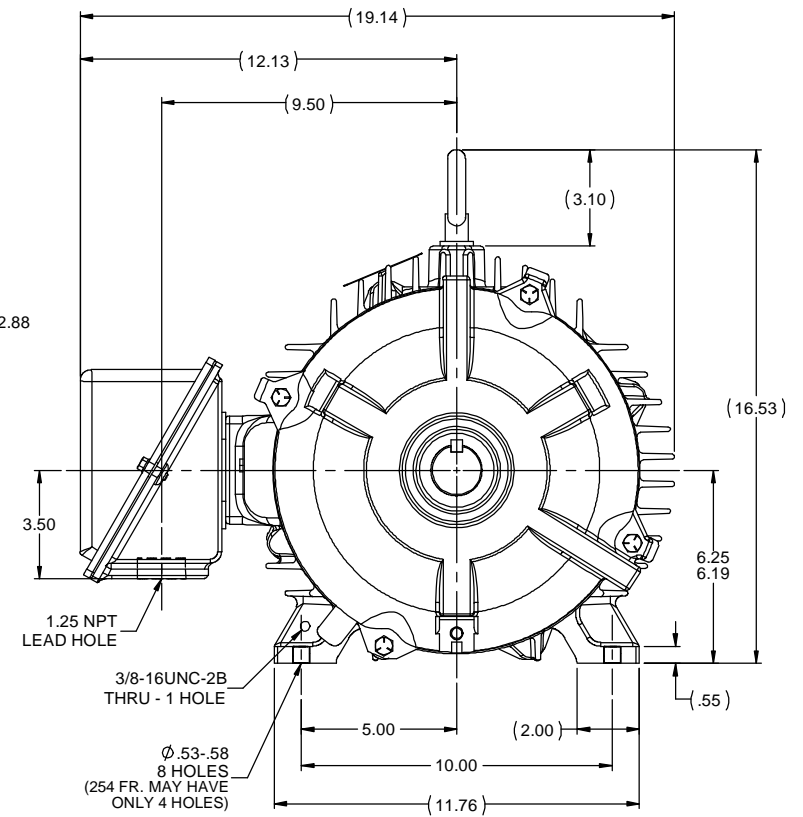
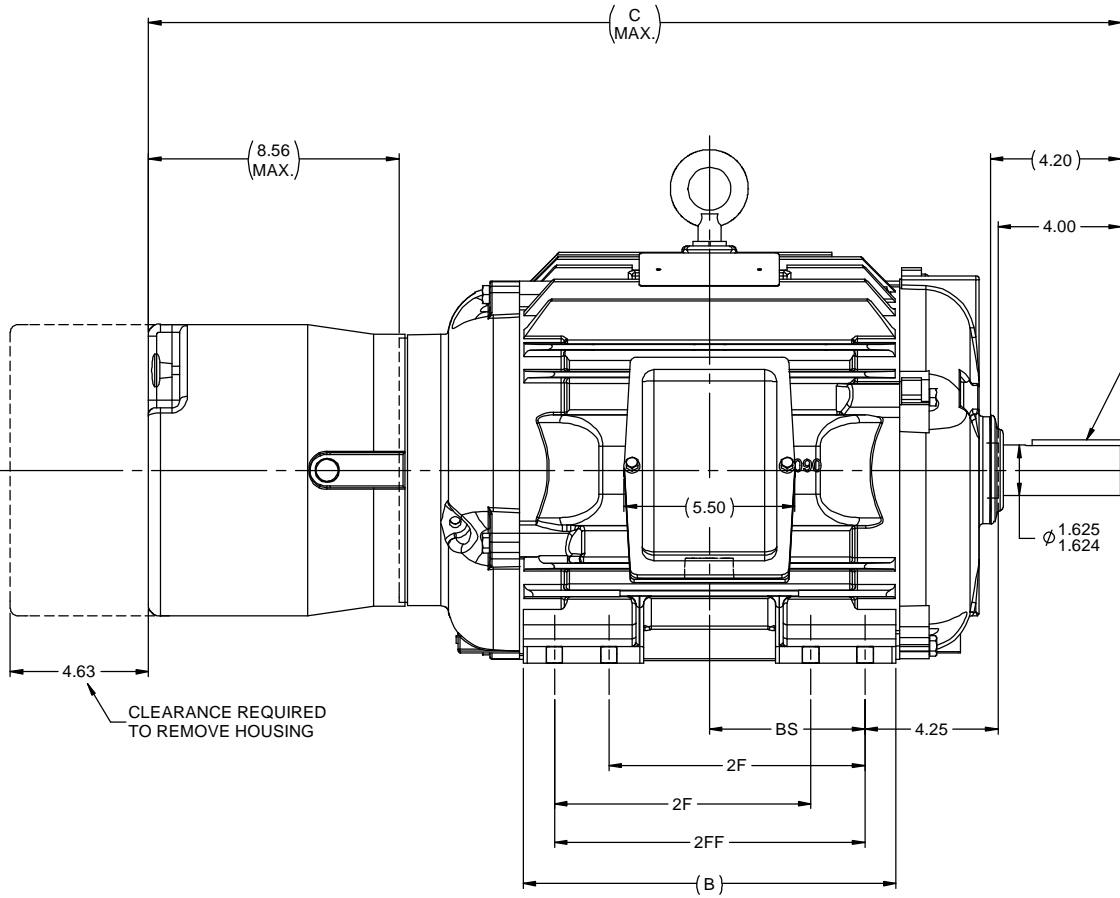
## Nameplate Specifications

Output HP	7.50 Hp	Output KW	5.6 kW
Frequency	60 Hz	Voltage	460 V
Current	12.2 A	Speed	870 rpm
Service Factor	1	Phase	3
Efficiency	85.5 %	Power Factor	67
Duty	60 Minute	Insulation Class	H
Design Code	INV	KVA Code	H
Frame	256T	Enclosure	Totally Enclosed Non Ventilated
Thermal Protection	Thermostat	Ambient Temperature	40 °C
Drive End Bearing Size	309	Opp Drive End Bearing Size	309
UL	Recognized	CSA	Y
CE	Y	IP Code	54
Number of Speeds	1		

## Technical Specifications

Electrical Type	Squirrel Cage Inverter Duty	Starting Method	Inverter Only
Poles	8	Rotation	Reversible
Resistance Main	1.33 Ohms	Mounting	Rigid Base
Motor Orientation	Horizontal	Drive End Bearing	Ball
Opp Drive End Bearing	Ball	Frame Material	Cast Iron
Shaft Type	T	Assembly/Box Mounting	F1/F2 CAPABLE
Inverter Load	CONSTANT 2000:1		
Connection Drawing	A-EE7300AK	Outline Drawing	B-SS203169-1225

This is an uncontrolled document once printed or downloaded and is subject to change without notice. Date Created:10/13/2022



- NOTES:
1. CONDUIT BOX CAN BE ROTATED IN 90 ° STEPS.
  2. CONDUIT BOX CAN BE MOUNTED ON OPPOSITE SIDE BY REMOVING BRACKETS AND TURNING FRAME 180 °.
  3. NAMEPLATE TO BE READ FROM CONDUIT BOX SIDE OF MOTOR.

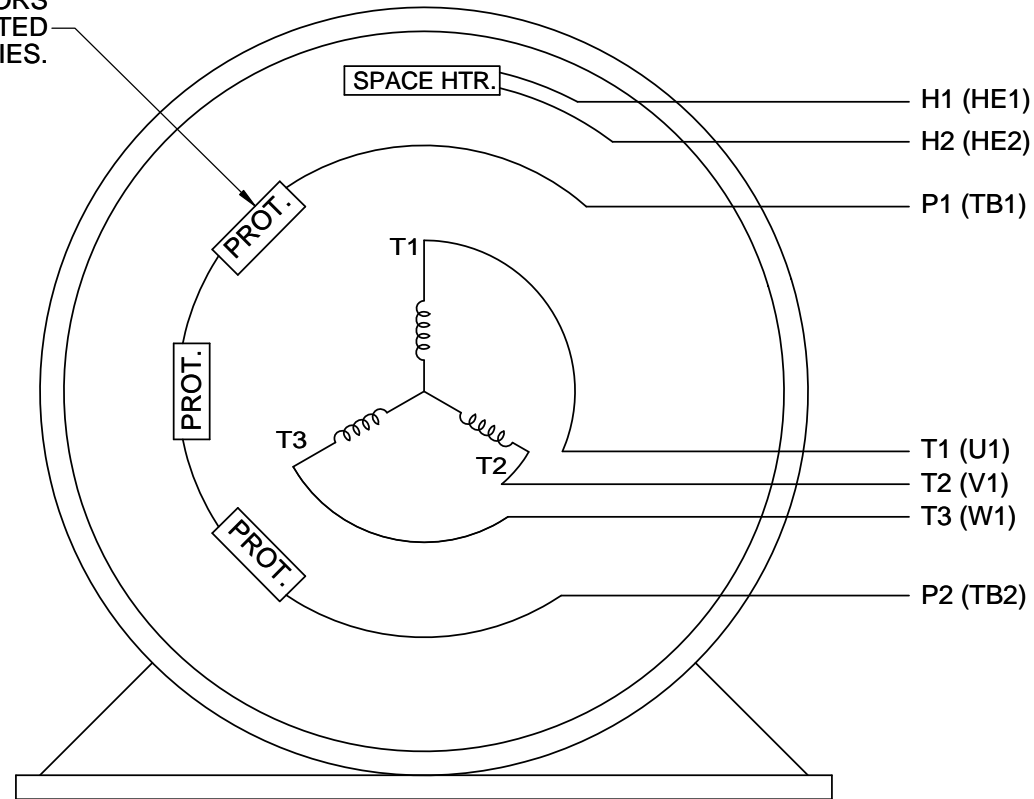
DASH	FRAME	B	C	2F	2FF	BS
1050	254T	10.25	30.06	8.25	- - -	4.12
1225	256T	12.00	31.81	8.25	10.00	5.00

		TOLERANCES UNLESS SPECIFIED		DEC INCHES		marathon <sup>®</sup> electric		DRAWN PGK 10/22/1996	
								CHK KL 10/22/1996	
								APPR BW 10/22/1996	
03	UPDATED FRAME MU108686	JG	7/11/2012	BW	XX	±.03	TITLE	OUTLINE - TENV - STEARNS BRAKE	SCALE 1:4
02	ADDED MAXING BRAKE SPEC. CN27451	DRS	05/13/1999		XXX	±.005		250T FR. -BB -TS -STD. -CAST C'BOX	REF
01	NEW DRAWING MU11349	PGK	10/23/1996		XXXX	±.0005	MATL		FMF
NO	REVISION	BY & DATE	CHK	ANG	± 1/2"	FINISH	PAGE OF		
	THIRD ANGLE PROJECTION					PREV	SIZE	DRAWING NO	REV
						NETWORK FILE NAME	B	SS203169	03

# P1 AND P2 PROTECTORS TO VOLTAGE CONTROL

TO REVERSE ROTATION:  
INTERCHANGE ANY TWO  
LINE LEAD CONNECTIONS.

PROTECTORS  
CONNECTED  
IN SERIES.



IF MOTOR OR GENERATOR  
HAS 6 LEADS

T1 ——— L1

T1 ——— L1

T2 ——— L2

T2 ——— L2

T3 ——— L3

T3 ——— L3

A-9806 DECAL

DRAWING REVISION J	REVISION BY J. OTTO	DATE 04-13-2017
ECO ECO-0121568	APPROVED BY T. VUE	DATE 04-18-2017
ECO DESCRIPTION		

## ADDED IEC NOTATIONS

COPYRIGHT REGAL BELOIT AMERICA, INC. ALL RIGHTS RESERVED.  
PROPRIETARY AND CONFIDENTIAL INFORMATION - THIS DOCUMENT IS THE PROPERTY OF  
REGAL BELOIT AMERICA, INC. ("OWNER") AND CONTAINS OWNER'S PROPRIETARY  
INFORMATION. ANY PERSON, CORPORATION OR OTHER FIRM RECEIVING IT IS DEEMED,  
BY RECEIVING IT, TO AGREE THAT IT, AND/OR ANY PART OF IT, SHALL NOT BE DISCLOSED  
TO ANY PERSON, CORPORATION OR OTHER ENTITY, DUPLICATED, AND/OR USED, EXCEPT  
AS EXPRESSLY APPROVED IN WRITING IN ADVANCE BY OWNER. THIS DOCUMENT SHALL  
BE RETURNED TO OWNER UPON REQUEST. IT MAY BE SUBJECT TO CERTAIN  
RESTRICTIONS UNDER APPLICABLE EXPORT CONTROL LAWS AND REGULATIONS.

TOLERANCES UNLESS OTHERWISE SPECIFIED:			
DEC.	INCH	mm	ANGLE
.X	±0.1	[±2.5]	±7' 30"
.XX	±0.02	[±0.51]	
.XXX	±0.005	[±0.127]	
.XXXX	±0.0005	[±0.0127]	
REMOVE BURRS & BREAK SHARP EDGES: .003/.015 [.076/.381] CORNER FILLETS: .02 [.51] MACHINED SURFACES: 200 INCH 5.1/mm			
mm SHOWN IN [BRACKETS]			

DRAWN BY MJD	DATE 06-24-2014
APPROVED BY TB	DATE 07-06-1998
REFERENCE	
THIRD ANGLE PROJECTION	

**REGAL**™ Regal Beloit America, Inc.

DESCRIPTION  
**CONN DIAGRAM-INTERNAL**  
SINGLE VOLT-3Ø MOTOR

MATERIAL	PROCESS/FINISH
SIZE A	DRAWING NUMBER EE7300AK
SHEET 1 OF 1	