

# PRODUCT INFORMATION PACKET

**marathon®**  
Motors

Model No: 256THFNA19081

Catalog No: W542

10 HP Severe Duty Motor, 3 phase, 1200 RPM, 575 V, 256T Frame, TEFC  
Severe Duty Motors



Regal and Marathon are trademarks of Regal Rexnord Corporation or one of its affiliated companies.  
©2021 Regal Rexnord Corporation, All Rights Reserved. MC017097E

**RegalRexnord**

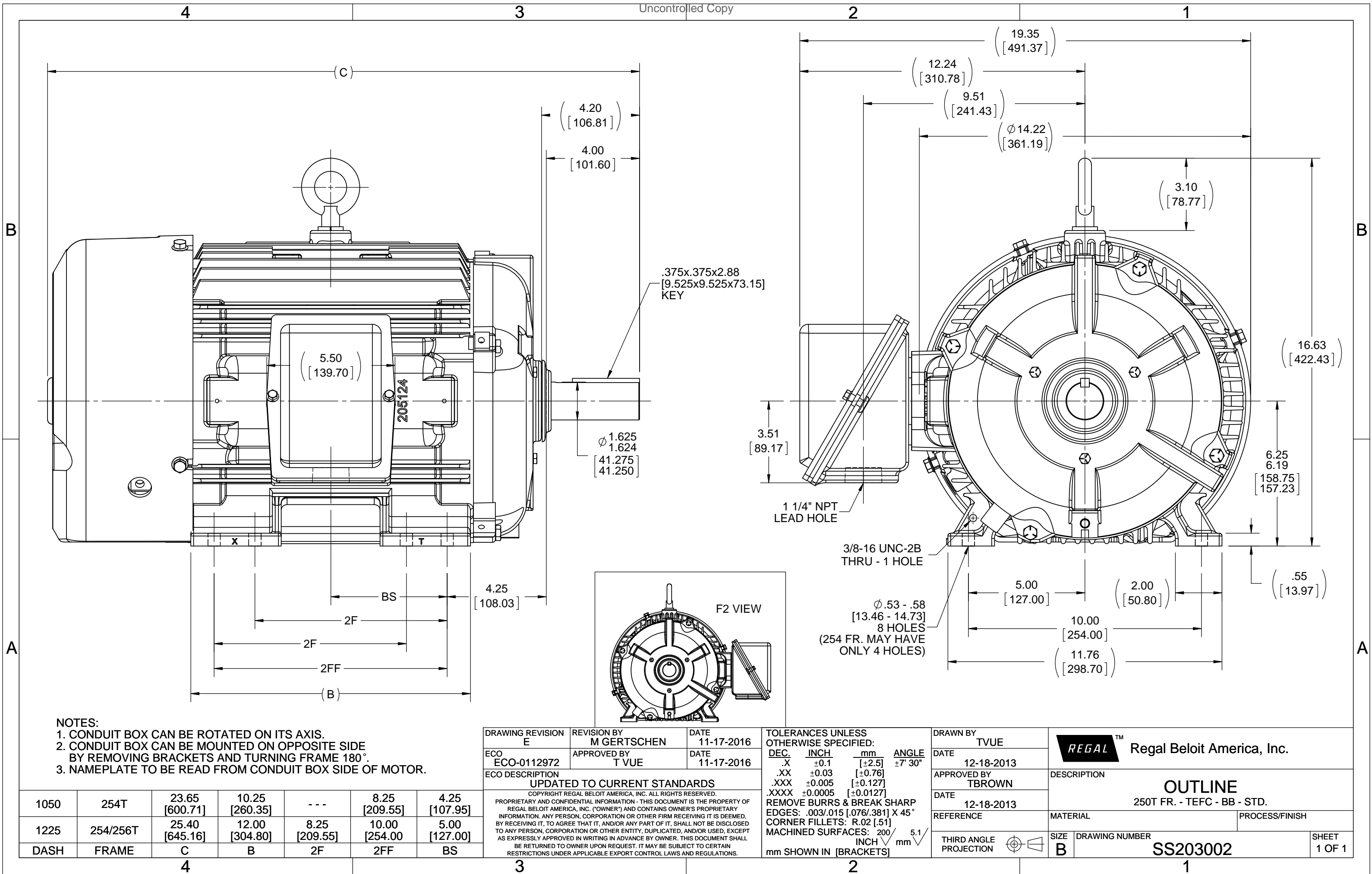
**Nameplate Specifications**

Output HP	10 Hp	Output KW	7.5 kW
Frequency	60 Hz	Voltage	575 V
Current	10.5 A	Speed	1176 rpm
Service Factor	1.15	Phase	3
Efficiency	91 %	Power Factor	79
Duty	Continuous	Insulation Class	F
Design Code	B	KVA Code	H
Frame	256T	Enclosure	Totally Enclosed Fan Cooled
Thermal Protection	No	Ambient Temperature	40 °C
Drive End Bearing Size	6309	Opp Drive End Bearing Size	6210
UL	Recognized	CSA	Y
CE	Y	IP Code	56
Number of Speeds	1		

**Technical Specifications**

Electrical Type	Squirrel Cage Inverter Rated	Starting Method	Line Or Inverter
Poles	6	Rotation	Reversible
Resistance Main	.934 Ohms	Mounting	Rigid Base
Motor Orientation	Horizontal	Drive End Bearing	Ball
Opp Drive End Bearing	Ball	Frame Material	Cast Iron
Shaft Type	T	Overall Length	25.40 in
Frame Length	12.25 in	Shaft Diameter	1.625 in
Shaft Extension	4.2 in	Assembly/Box Mounting	F1/F2 Capable
Connection Drawing	A-EE7300	Outline Drawing	B-SS203002-1225

This is an uncontrolled document once printed or downloaded and is subject to change without notice. Date Created:10/12/2021



THREE PHASE - SINGLE VOLTAGE  
MOTOR - CONDUIT BOX @ 'A'

TO REVERSE ROTATION:  
INTERCHANGE ANY TWO  
LINE LEAD CONNECTIONS.

TERMINAL BLOCK WHEN SPECIFIED



IF MOTOR HAS  
6 LEADS



A-9806 DECAL

OPTIONAL CORD  
CONNECTION



VIEW OF TERMINAL END

DRAWING REVISION AB	REVISION BY JJB	DATE 06-27-2017
ECO ECO-0125361	APPROVED BY TB	DATE 06-27-2017
ECO DESCRIPTION UPDATED TO CURRENT STANDARDS		
<small>COPYRIGHT REGAL BELOIT AMERICA, INC. ALL RIGHTS RESERVED.          PROPRIETARY AND CONFIDENTIAL INFORMATION - THIS DOCUMENT IS THE PROPERTY OF          REGAL BELOIT AMERICA, INC. ("OWNER") AND CONTAINS OWNER'S PROPRIETARY          INFORMATION. ANY PERSON, CORPORATION OR OTHER FIRM RECEIVING IT IS DEEMED,          BY RECEIVING IT, TO AGREE THAT IT, AND/OR ANY PART OF IT, SHALL NOT BE DISCLOSED          TO ANY PERSON, CORPORATION OR OTHER ENTITY, DUPLICATED, AND/OR USED, EXCEPT          AS EXPRESSLY APPROVED IN WRITING IN ADVANCE BY OWNER. THIS DOCUMENT SHALL          BE RETURNED TO OWNER UPON REQUEST. IT MAY BE SUBJECT TO CERTAIN          RESTRICTIONS UNDER APPLICABLE EXPORT CONTROL LAWS AND REGULATIONS.</small>		

DRAWN BY DA
DATE 03-26-1993
APPROVED BY TB
DATE 03-26-1993
REFERENCE
THIRD ANGLE PROJECTION



Regal Beloit America, Inc.

DESCRIPTION  
**CONNECTION DIAGRAM**  
EXTERNAL - SINGLE VOLTAGE - 3Ø MOTOR

MATERIAL PROCESS/FINISH

SIZE A	DRAWING NUMBER EE7300	SHEET 1 OF 1
-----------	--------------------------	-----------------

## CERTIFICATION DATA SHEET

Model#: 256THFNA19081 AB  
 CONN. DIAGRAM: A-EE7300  
 OUTLINE: B-SS203002-1225

WINDING#: 256674 NONE 8  
 ASSEMBLY: F1/F2 CAPABLE

## TYPICAL MOTOR PERFORMANCE DATA

HP	KW	SYNC. RPM	F.L. RPM	FRAME	ENCLOSURE	KVA CODE	DESIGN
10	7.5	1200	1176	256T	TEFC	H	B

PH	Hz	VOLTS	FL AMPS	START TYPE	DUTY	INSL	S.F	AMB°C	ELEVATION
3	60	575	10.5	LINE OR INVERTER	CONTINUOUS	F3	1.15	40	3300

FULL LOAD EFF: 91	3/4 LOAD EFF: 91	1/2 LOAD EFF: 90.2	GTD. EFF	ELEC. TYPE	NO LOAD AMPS
FULL LOAD PF: 79	3/4 LOAD PF: 72.5	1/2 LOAD PF: 61	90.2	SQ CAGE INV RATED	5.2

F.L. TORQUE	LOCKED ROTOR AMPS	L.R. TORQUE	B.D. TORQUE	F.L. RISE°C
44.7 LB-FT	64.8	92 LB-FT 206	139 LB-FT 311	40

SOUND PRESSURE @ 3 FT.	SOUND POWER	ROTOR WK^2	MAX. WK^2	SAFE STALL TIME	STARTS /HOUR	APPROX. MOTOR WGT
56 dBA	66 dBA	3 LB-FT^2	225 LB-FT^2	20 SEC.	2	390 LBS.

## \*\*\* SUPPLEMENTAL INFORMATION \*\*\*

DE BRACKET TYPE	ODE BRACKET TYPE	MOUNT TYPE	ORIENTATION	SEVERE DUTY	HAZARDOUS LOCATION	DRIP COVER	SCREENS	PAINT
STANDARD	STANDARD	RIGID	HORIZONTAL	PREMIUM SEVERE DUTY	DIVISION 2 T2B	FALSE	NONE	BLUE (EPOXY)

BEARINGS		GREASE	SHAFT TYPE	SPECIAL DE	SPECIAL ODE	SHAFT MATERIAL	FRAME MATERIAL
DE	OPE						
BALL	BALL						
6309	6210	POLYREX EM	T	NONE	NONE	1045 HOT ROLLED (C-204)	CAST IRON

THERMO-PROTECTORS				THERMISTORS	CONTROL	SPACE /n HEATERS
THERMOSTATS	PROTECTORS	WDG RTDs	BRG RTDs			
NONE	NOT	NONE	NONE	NONE	FALSE	NONE VOLTS

If Inverter equals NONE, contact factory for further information

INVERTER TORQUE: CONSTANT 2:1  
 INV. HP SPEED RANGE: NONE

ENCODER: NONE  
 NONE NONE  
 NONE NONE PPR

BRAKE: NONE NONE  
 NONE P/N NONE  
 NONE NONE  
 NONE FT-LB NONE V NONE Hz

\*  
N  
O  
T  
E  
S  
\*

DATE: 06/23/2017 04:41:11 AM  
 FORM 3531 REV.3 02/07/99  
 \*\* Subject to change without notice.

## Data Sheet

Date: 6/19/2017

Customer: \_\_\_\_\_

Attention: \_\_\_\_\_

Submitted by: FAREEDA DUDEKULA



256THFNA19081

Submittal

Data @ 575 V

## Motor Load Data

Load	0%	25%	50%	75%	100%	115%	125%	LR	
Current (Amps)	5.2	5.6	6.8	8.4	10.5	12.0	12.8	64.8	
Torque (ft-lb)	0.00	11.0	22.0	33.5	44.7	51.0	56.0	92.0	
RPM	1200	1195	1190	1180	1176	1,170	1165	0	
Efficiency (%)		84.0	90.2	91.0	91.0	90.2	89.5		
P.F. (%)	5.5	39.5	61.0	72.5	79.0	80.0	81.5	41.0	

## Motor Speed Data

	LR	Pull-Up	BD	Rated	Idle	Information Block																		
Speed (RPM)	0	400	1055	1176	1200	HP	10.0																	
Current (Amps)	64.8	62.4	42.8	10.5	5.2	Sync. RPM	1200																	
Torque (ft-lb)	92.0	86.0	139	44.7	0.00	Frame	256																	
<div><div>— Efficiency (%) — P.F. (%) — Current (Amps)</div><div>EFFICIENCY (%)</div><div>P.F. (%)</div><div>CURRENT (AMPS)</div></div> <table><tr><td colspan="2">EQUIV CKT (OHMS / PHASE)</td><td>R1</td><td>R2</td><td>X1</td><td>X2</td><td>Xm</td></tr><tr><td colspan="2"></td><td>0.8920</td><td>0.7680</td><td>3.4970</td><td>3.9270</td><td>67.4500</td></tr></table>						EQUIV CKT (OHMS / PHASE)		R1	R2	X1	X2	Xm			0.8920	0.7680	3.4970	3.9270	67.4500	Enclosure	TEFC			
						EQUIV CKT (OHMS / PHASE)		R1	R2	X1	X2	Xm												
								0.8920	0.7680	3.4970	3.9270	67.4500												
						Construction	TFN																	
						Voltage	575	V																
						Frequency	60	Hz																
						Design	B																	
						LR Code letter	H																	
						Service Factor	1.15																	
						Temp Rise @ FL	40	° C																
						Duty	CONT																	
						Ambient	40	° C																
						Elevation	1,000 feet																	
						Rotor/Shaft wk²	3.0	Lb-Ft²																
						Ref Wdg	256674	NONE																
						Sound Pressure @ 1M	56	dBA																
						VFD Rating	CONSTANT 2:1																	
Outline Dwg	B-SS203002-1225																							
Conn. Diag	A-EE7300																							
Additional Specifications:																								
0																								
0																								

 Enclosure | TEFC | | | || Construction | TFN | | | |
Voltage	575	V				
Frequency	60	Hz				
Design	B					
LR Code letter	H					
Service Factor	1.15					
Temp Rise @ FL	40	° C				
Duty	CONT					
Ambient	40	° C				
Elevation	1,000 feet					
Rotor/Shaft wk²	3.0	Lb-Ft²				
Ref Wdg	256674	NONE				
Sound Pressure @ 1M	56	dBA				
VFD Rating	CONSTANT 2:1					
Outline Dwg	B-SS203002-1225					
Conn. Diag	A-EE7300					
Additional Specifications:						
0						
0						
Enclosure	TEFC					Construction
Voltage	575	V				
Frequency	60	Hz				
Design	B					
LR Code letter	H					
Service Factor	1.15					
Temp Rise @ FL	40	° C				
Duty	CONT					
Ambient	40	° C				
Elevation	1,000 feet					
Rotor/Shaft wk²	3.0	Lb-Ft²				
Ref Wdg	256674	NONE				
Sound Pressure @ 1M	56	dBA				
VFD Rating	CONSTANT 2:1					
Outline Dwg	B-SS203002-1225					
Conn. Diag	A-EE7300					
Additional Specifications:						
0						
0						
Enclosure	TEFC					Construction
Voltage	575	V				
Frequency	60	Hz				
Design	B					
LR Code letter	H					
Service Factor	1.15					
Temp Rise @ FL	40	° C				
Duty	CONT					
Ambient	40	° C				
Elevation	1,000 feet					
Rotor/Shaft wk²	3.0	Lb-Ft²				
Ref Wdg	256674	NONE				
Sound Pressure @ 1M	56	dBA				
VFD Rating	CONSTANT 2:1					
Outline Dwg	B-SS203002-1225					
Conn. Diag	A-EE7300					
Additional Specifications:						
0						
0						
Enclosure	TEFC					Construction
Voltage	575	V				
Frequency	60	Hz				
Design	B					
LR Code letter	H					
Service Factor	1.15					
Temp Rise @ FL	40	° C				
Duty	CONT					
Ambient	40	° C				
Elevation	1,000 feet					
Rotor/Shaft wk²	3.0	Lb-Ft²				
Ref Wdg	256674	NONE				
Sound Pressure @ 1M	56	dBA				
VFD Rating	CONSTANT 2:1					
Outline Dwg	B-SS203002-1225					
Conn. Diag	A-EE7300					
Additional Specifications:						
0						
0						
Enclosure	TEFC					Construction
Voltage	575	V				
Frequency	60	Hz				
Design	B					
LR Code letter	H					
Service Factor	1.15					
Temp Rise @ FL	40	° C				
Duty	CONT					
Ambient	40	° C				
Elevation	1,000 feet					
Rotor/Shaft wk²	3.0	Lb-Ft²				
Ref Wdg	256674	NONE				
Sound Pressure @ 1M	56	dBA				
VFD Rating	CONSTANT 2:1					
Outline Dwg	B-SS203002-1225					
Conn. Diag	A-EE7300					
Additional Specifications:						
0						
0						
Enclosure	TEFC					Construction
Voltage	575	V				
Frequency	60	Hz				
Design	B					
LR Code letter	H					
Service Factor	1.15					
Temp Rise @ FL	40	° C				
Duty	CONT					
Ambient	40	° C				
Elevation	1,000 feet					
Rotor/Shaft wk²	3.0	Lb-Ft²				
Ref Wdg	256674	NONE				
Sound Pressure @ 1M	56	dBA				
VFD Rating	CONSTANT 2:1					
Outline Dwg	B-SS203002-1225					
Conn. Diag	A-EE7300					
Additional Specifications:						
0						
0						
Enclosure	TEFC					Construction
Voltage	575	V				
Frequency	60	Hz				
Design	B					
LR Code letter	H					
Service Factor	1.15					
Temp Rise @ FL	40	° C				
Duty	CONT					
Ambient	40	° C				
Elevation	1,000 feet					
Rotor/Shaft wk²	3.0	Lb-Ft²				
Ref Wdg	256674	NONE				
Sound Pressure @ 1M	56	dBA				
VFD Rating	CONSTANT 2:1					
Outline Dwg	B-SS203002-1225					
Conn. Diag	A-EE7300					
Additional Specifications:						
0						
0						
Enclosure	TEFC					Construction
Voltage	575	V				
Frequency	60	Hz				
Design	B					
LR Code letter	H					
Service Factor	1.15					
Temp Rise @ FL	40	° C				
Duty	CONT					
Ambient	40	° C				
Elevation	1,000 feet					
Rotor/Shaft wk²	3.0	Lb-Ft²				
Ref Wdg	256674	NONE				
Sound Pressure @ 1M	56	dBA				
VFD Rating	CONSTANT 2:1					
Outline Dwg	B-SS203002-1225					
Conn. Diag	A-EE7300					
Additional Specifications:						
0						
0						
Enclosure	TEFC					Construction
Voltage	575	V				
Frequency	60	Hz				
Design	B					
LR Code letter	H					
Service Factor	1.15					
Temp Rise @ FL	40	° C				
Duty	CONT					
Ambient	40	° C				
Elevation	1,000 feet					
Rotor/Shaft wk²	3.0	Lb-Ft²				
Ref Wdg	256674	NONE				
Sound Pressure @ 1M	56	dBA				
VFD Rating	CONSTANT 2:1					
Outline Dwg	B-SS203002-1225					
Conn. Diag	A-EE7300					
Additional Specifications:						
0						
0						
Enclosure	TEFC					Construction
Voltage	575	V				
Frequency	60	Hz				
Design	B					
LR Code letter	H					
Service Factor	1.15					
Temp Rise @ FL	40	° C				
Duty	CONT					
Ambient	40	° C				
Elevation	1,000 feet					
Rotor/Shaft wk²	3.0	Lb-Ft²				
Ref Wdg	256674	NONE				
Sound Pressure @ 1M	56	dBA				
VFD Rating	CONSTANT 2:1					
Outline Dwg	B-SS203002-1225					
Conn. Diag	A-EE7300					
Additional Specifications:						
0						
0						
Enclosure	TEFC					Construction
Voltage	575	V				
Frequency	60	Hz				
Design	B					
LR Code letter	H					
Service Factor	1.15					
Temp Rise @ FL	40	° C				
Duty	CONT					
Ambient	40	° C				
Elevation	1,000 feet					
Rotor/Shaft wk²	3.0	Lb-Ft²				
Ref Wdg	256674	NONE				
Sound Pressure @ 1M	56	dBA				
VFD Rating	CONSTANT 2:1					
Outline Dwg	B-SS203002-1225					
Conn. Diag	A-EE7300					
Additional Specifications:						
0						
0						
Enclosure	TEFC					Construction
Voltage	575	V				
Frequency	60	Hz				
Design	B					
LR Code letter	H					
Service Factor	1.15					
Temp Rise @ FL	40	° C				
Duty	CONT					
Ambient	40	° C				
Elevation	1,000 feet					
Rotor/Shaft wk²	3.0	Lb-Ft²				
Ref Wdg	256674	NONE				
Sound Pressure @ 1M	56	dBA				
VFD Rating	CONSTANT 2:1					
Outline Dwg	B-SS203002-1225					
Conn. Diag	A-EE7300					
Additional Specifications:						
0						
0						
Enclosure	TEFC					Construction
Voltage	575	V				
Frequency	60	Hz				
Design	B					
LR Code letter	H					
Service Factor	1.15					
Temp Rise @ FL	40	° C				
Duty	CONT					
Ambient	40	° C				
Elevation	1,000 feet					
Rotor/Shaft wk²	3.0	Lb-Ft²				
Ref Wdg	256674	NONE				
Sound Pressure @ 1M	56	dBA				
VFD Rating	CONSTANT 2:1					
Outline Dwg	B-SS203002-1225					
Conn. Diag	A-EE7300					
Additional Specifications:						
0						
0						
Enclosure	TEFC					Construction
Voltage	575	V				
Frequency	60	Hz				
Design	B					
LR Code letter	H					
Service Factor	1.15					
Temp Rise @ FL	40	° C				
Duty	CONT					
Ambient	40	° C				
Elevation	1,000 feet					
Rotor/Shaft wk²	3.0	Lb-Ft²				
Ref Wdg	256674	NONE				
Sound Pressure @ 1M	56	dBA				
VFD Rating	CONSTANT 2:1					
Outline Dwg	B-SS203002-1225					
Conn. Diag	A-EE7300					
Additional Specifications:						
0						
0						
Enclosure	TEFC					Construction
Voltage	575	V				
Frequency	60	Hz				
Design	B					
LR Code letter	H					
Service Factor	1.15					
Temp Rise @ FL	40	° C				
Duty	CONT					
Ambient	40	° C				
Elevation	1,000 feet					
Rotor/Shaft wk²	3.0	Lb-Ft²				
Ref Wdg	256674	NONE				
Sound Pressure @ 1M	56	dBA				
VFD Rating	CONSTANT 2:1					
Outline Dwg	B-SS203002-1225					
Conn. Diag	A-EE7300					
Additional Specifications:						
0						
0						
Enclosure	TEFC					Construction
Voltage	575	V				
Frequency	60	Hz				
Design	B					
LR Code letter	H					
Service Factor	1.15					
Temp Rise @ FL	40	° C				
Duty	CONT					
Ambient	40	° C				
Elevation	1,000 feet					
Rotor/Shaft wk²	3.0	Lb-Ft²				
Ref Wdg	256674	NONE				
Sound Pressure @ 1M	56	dBA				
VFD Rating	CONSTANT 2:1					
Outline Dwg	B-SS203002-1225					
Conn. Diag	A-EE7300					
Additional Specifications:						
0						
0						
Enclosure	TEFC					Construction
Voltage	575	V				
Frequency	60	Hz				
Design	B					
LR Code letter	H					
Service Factor	1.15					
Temp Rise @ FL	40	° C				
Duty	CONT					
Ambient	40	° C				
Elevation	1,000 feet					
Rotor/Shaft wk²	3.0	Lb-Ft²				
Ref Wdg	256674	NONE				
Sound Pressure @ 1M	56	dBA				
VFD Rating	CONSTANT 2:1					
Outline Dwg	B-SS203002-1225					
Conn. Diag	A-EE7300					
Additional Specifications:						
0						
0						
Enclosure	TEFC					Construction
Voltage	575	V				
Frequency	60	Hz				
Design	B					
LR Code letter	H					
Service Factor	1.15					
Temp Rise @ FL	40	° C				
Duty	CONT					
Ambient	40	° C				
Elevation	1,000 feet					
Rotor/Shaft wk²	3.0	Lb-Ft²				
Ref Wdg	256674	NONE				
Sound Pressure @ 1M	56	dBA				
VFD Rating	CONSTANT 2:1					
Outline Dwg	B-SS203002-1225					
Conn. Diag	A-EE7300					
Additional Specifications:						
0						
0						
Enclosure	TEFC					Construction
Voltage	575	V				
Frequency	60	Hz				
Design	B					
LR Code letter	H					
Service Factor	1.15					
Temp Rise @ FL	40	° C				
Duty	CONT					
Ambient	40	° C				
Elevation	1,000 feet					
Rotor/Shaft wk²	3.0	Lb-Ft²				
Ref Wdg	256674	NONE				
Sound Pressure @ 1M	56	dBA				
VFD Rating	CONSTANT 2:1					
Outline Dwg	B-SS203002-1225					
Conn. Diag	A-EE7300					
Additional Specifications:						
0						
0						
Enclosure	TEFC					Construction
Voltage	575	V				
Frequency	60	Hz				
Design	B					
LR Code letter	H					
Service Factor	1.15					
Temp Rise @ FL	40	° C				
Duty	CONT					
Ambient	40	° C				
Elevation	1,000 feet					
Rotor/Shaft wk²	3.0	Lb-Ft²				
Ref Wdg	256674	NONE				
Sound Pressure @ 1M	56	dBA				
VFD Rating	CONSTANT 2:1					
Outline Dwg	B-SS203002-1225					
Conn. Diag	A-EE7300					
Additional Specifications:						
0						
0						
Enclosure	TEFC					Construction
Voltage	575	V				
Frequency	60	Hz				
Design	B					
LR Code letter	H					
Service Factor	1.15					
Temp Rise @ FL	40	° C				
Duty	CONT					
Ambient	40	° C				
Elevation	1,000 feet					
Rotor/Shaft wk²	3.0	Lb-Ft²				
Ref Wdg	256674	NONE				
Sound Pressure @ 1M	56	dBA				
VFD Rating	CONSTANT 2:1					
Outline Dwg	B-SS203002-1225					
Conn. Diag	A-EE7300					
Additional Specifications:						
0						
0						
Enclosure	TEFC					Construction
Voltage	575	V				
Frequency	60	Hz				
Design	B					
LR Code letter	H					
Service Factor	1.15					
Temp Rise @ FL	40	° C				
Duty	CONT					
Ambient	40	° C				
Elevation	1,000 feet					
Rotor/Shaft wk²	3.0	Lb-Ft²				
Ref Wdg	256674	NONE				
Sound Pressure @ 1M	56	dBA				
VFD Rating	CONSTANT 2:1					
Outline Dwg	B-SS203002-1225					
Conn. Diag	A-EE7300					
Additional Specifications:						
0						
0						
Enclosure	TEFC					Construction
Voltage	575	V				
Frequency	60	Hz				
Design	B					
LR Code letter	H					
Service Factor	1.15					
Temp Rise @ FL	40	° C				
Duty	CONT					
Ambient	40	° C				
Elevation	1,000 feet					
Rotor/Shaft wk²	3.0	Lb-Ft²				
Ref Wdg	256674	NONE				
Sound Pressure @ 1M	56	dBA				
VFD Rating	CONSTANT 2:1					
Outline Dwg	B-SS203002-1225					
Conn. Diag	A-EE7300					
Additional Specifications:						
0						
0						
Enclosure	TEFC					Construction
Voltage	575	V				
Frequency						

## Speed -Torque Curve

