

PRODUCT INFORMATION PACKET

Model No: 256THEN17031

Catalog No: Y984

Blue Max® Hazardous Duty® Explosion Proof Motor, 15 HP, 3 Ph, 60 Hz, 230/460 V, 1800 RPM,
256TC Frame, EPNV



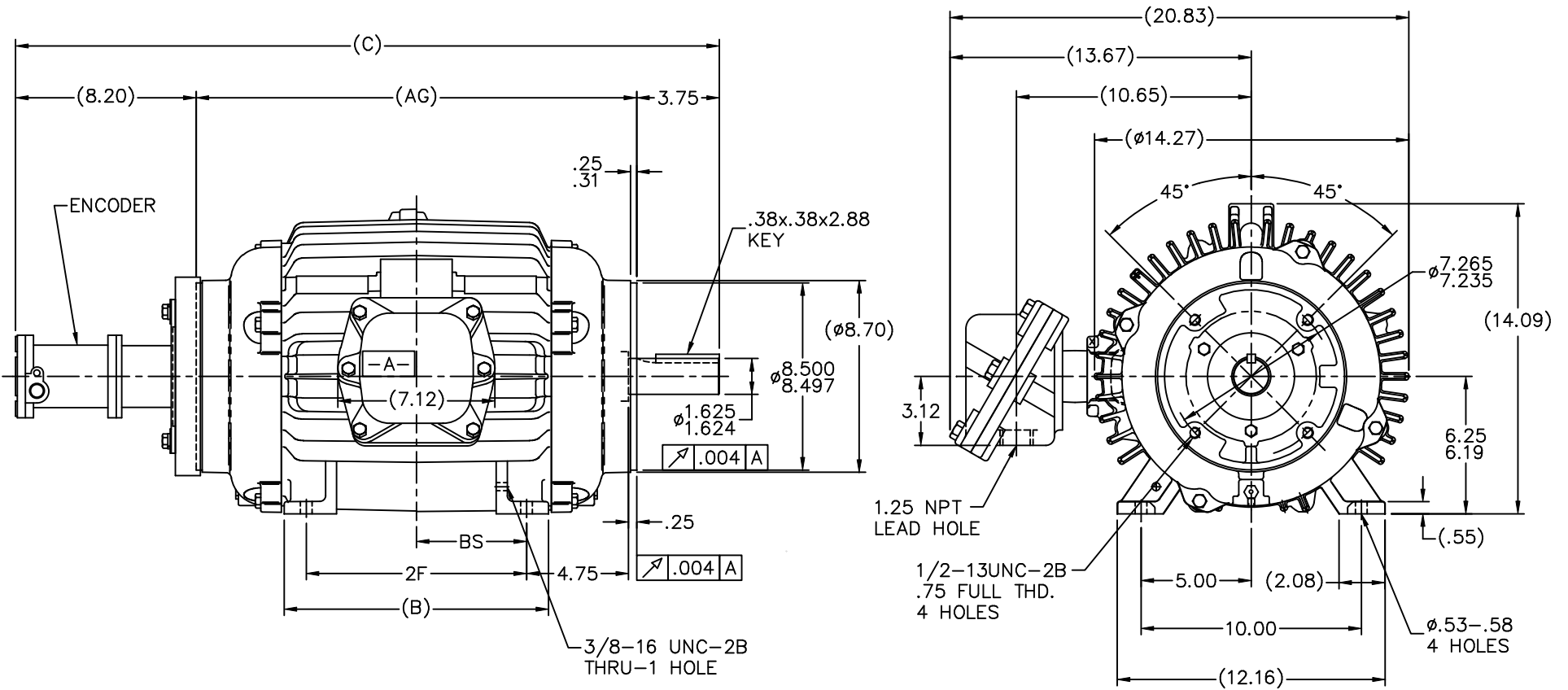
Regal and Marathon are trademarks of Regal Rexnord Corporation or one of its affiliated companies.
©2023 Regal Rexnord Corporation, All Rights Reserved. MC017097E

Nameplate Specifications

Output HP	15 Hp	Output KW	11.2 kW
Frequency	60 Hz	Voltage	230/460 V
Current	36.0/18.0 A	Speed	1770 rpm
Service Factor	1	Phase	3
Efficiency	93 %	Power Factor	85
Duty	Continuous	Insulation Class	F
Design Code	INV	KVA Code	K
Frame	256TC	Enclosure	Explosion Proof Non Ventilated
Thermal Protection	Thermostat	Ambient Temperature	40 °C
Drive End Bearing Size	6309	Opp Drive End Bearing Size	6309
UL	UL Listed And CSA Certified	CSA	Y
CE	N	IP Code	54
Hazardous Location	DIV 1 EXP PROOF CL I GR CD CL II GR FG T3C	Number of Speeds	1

Technical Specifications

Electrical Type	Squirrel Cage Inverter Duty	Starting Method	Inverter Only
Poles	4	Rotation	Reversible
Resistance Main	.496 Ohms	Mounting	Rigid Base
Motor Orientation	Horizontal	Drive End Bearing	Ball
Opp Drive End Bearing	Ball	Frame Material	Cast Iron
Shaft Type	T	Overall Length	31.95 in
Frame Length	12.25 in	Shaft Diameter	1.625 in
Shaft Extension	3.75 in	Assembly/Box Mounting	F1 ONLY
Inverter Load	CONSTANT 2000:1		
Connection Drawing	A-EE7308AD	Outline Drawing	B-SS203518-1225



- NOTES:
 1. BOX CAN ONLY BE ROTATED CLOCKWISE UP TO 270' FROM ITS ORIGINAL POSITION.
 2. NAMEPLATE TO BE READ FROM C'BOX SIDE OF MOTOR.

DASH	FRAME	C	AG	B	2F	BS
1050	254TC	30.20	18.25	10.25	8.25	4.12
1225	256TC	31.95	20.00	12.00	10.00	5.00

NO.		REVISION	BY & DATE	CHK	ANG	TOLERANCES UNLESS SPECIFIED	DEC.	INCHES	
2		REDRAWN IN AUTOCAD	TAT 06-24-2005	DRS	.XXX	±.03	.X	±.1	
1		NEW DRAWING MU29397	MJD 03-07-2000		.XXXX	±.0005			
THIS DRAWING IN DESIGN AND DETAIL IS OUR PROPERTY AND MUST NOT BE USED EXCEPT IN CONNECTION WITH OUR WORK ALL RIGHTS OF DESIGN AND INVENTION ARE RESERVED THIS IS AN ELECTRONICALLY GENERATED DOCUMENT - DO NOT SCALE THIS PRINT							RFP		
							FINISH		
							CAD FILE	ss203518	
							SIZE	B	
							DRAWING NO.	SS203518	
							PAGE OF	2	
							REV.		



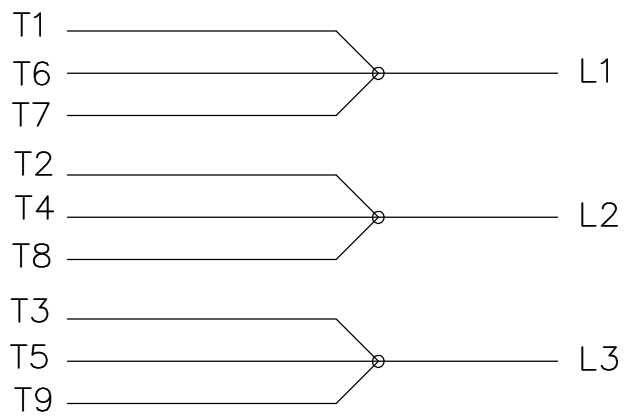
TITLE OUTLINE - BEI HS38 ENCODER
 250T FR. - EXP. PR. - TGN - 'C' FACE

DRAWN MJD 03-06-2000
 CHK ML 03-07-2000
 APPD DR 03-07-2000

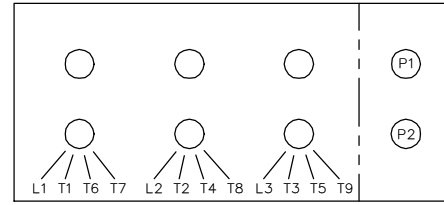
SCALE 7=32
 REF

PREV

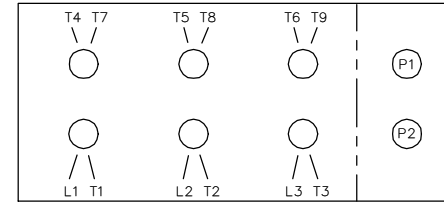
LOW VOLTAGE



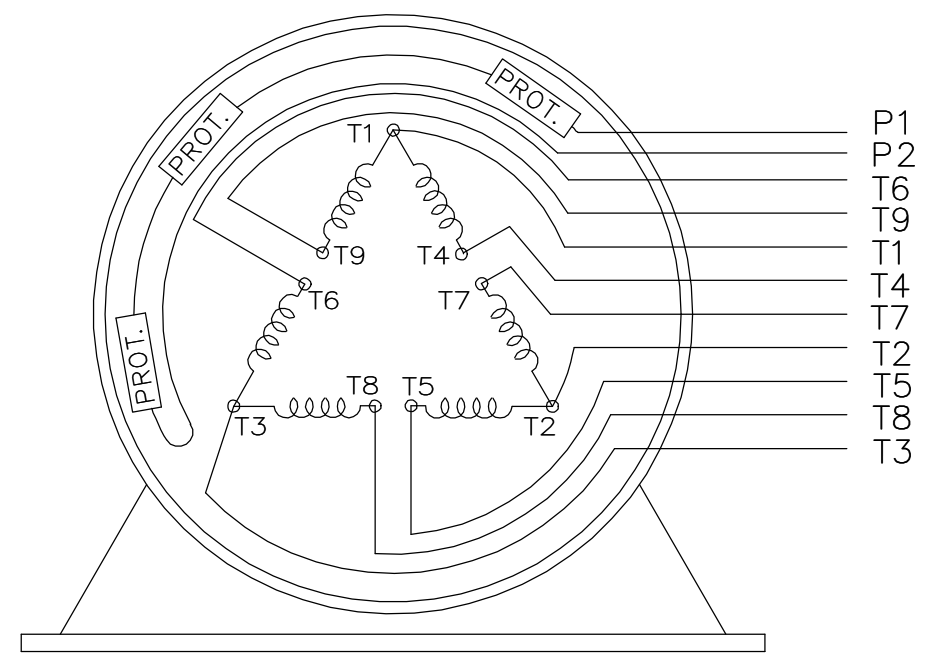
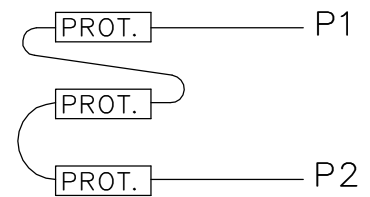
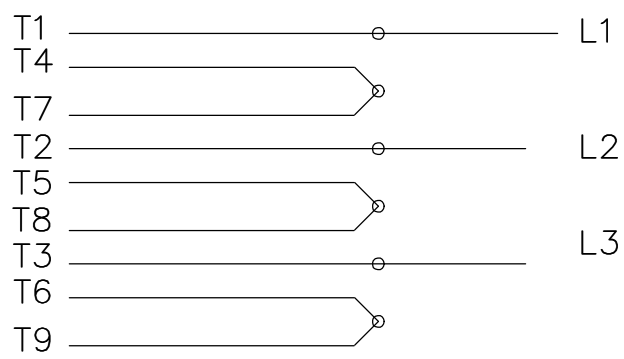
LOW VOLTAGE



HIGH VOLTAGE



HIGH VOLTAGE



VIEW OF TERMINAL END

WHEN MORE THAN ONE PROT. IS USED; PROT. ARE CONNECTED IN SERIES

DRAWING REVISION L		REVISION BY JP	REV DATE/© DATE 06-21-2019	TOLERANCES (EXCEPT AS NOTED):		DRAWN BY MJD	Regal Beloit America, Inc.	
ECO ECO-0168744	APPROVED BY MH	DATE 06-21-2019	DEC. .X ±0.1 [±3] .XX ±0.02 [±0.5] .XXX ±0.005 [±0.13] .XXXX ±0.0005 [±0.013]	INCH mm ANGLE ±7° 30"	DATE 12-19-1997	DESCRIPTION CONN DIAGRAM-EXTERNAL		
ECO DESCRIPTION UPDATED TO CURRENT STANDARDS				REMOVE BURRS & BREAK SHARP EDGES: .003/.015 [.08/.38] X 45° CORNER FILLETS: R.02 [.5] MACHINED SURFACES: 200/ 5.1 INCH/mm		APPROVED BY GK	MATERIAL	PROCESS/FINISH
COPYRIGHT (PER REVISION DATE) REGAL BELOIT AMERICA, INC. ALL RIGHTS RESERVED. PROPRIETARY AND CONFIDENTIAL INFORMATION - THIS DOCUMENT IS THE PROPERTY OF REGAL BELOIT AMERICA, INC. ("OWNER") AND CONTAINS OWNER'S PROPRIETARY INFORMATION. ANY PERSON, CORPORATION OR OTHER FIRM RECEIVING IT IS DEEMED, BY RECEIVING IT, TO AGREE THAT IT, AND/OR ANY PART OF IT, SHALL NOT BE DISCLOSED TO ANY PERSON, CORPORATION OR OTHER ENTITY, DUPLICATED, AND/OR USED, EXCEPT AS EXPRESSLY APPROVED IN WRITING IN ADVANCE BY OWNER. THIS DOCUMENT SHALL BE RETURNED TO OWNER UPON REQUEST. IT MAY BE SUBJECT TO CERTAIN RESTRICTIONS UNDER APPLICABLE EXPORT CONTROL LAWS AND REGULATIONS.				mm DIMENSIONS IN [BRACKETS] ARE FOR REFERENCE ONLY		DATE 01-07-1998	DRAWING NUMBER EE7308AD	SHEET 1 OF 1
				THIRD ANGLE PROJECTION		REFERENCE	SIZE A	

CERTIFICATION DATA SHEET

Model#: 256THEN17031 AB **WINDING#:** K2564196 NONE 1
CONN. DIAGRAM: A-EE7308AD **ASSEMBLY:** F1 ONLY
OUTLINE: B-SS203518-1225

TYPICAL MOTOR PERFORMANCE DATA

HP	KW	SYNC. RPM	F.L. RPM	FRAME	ENCLOSURE	KVA CODE	DESIGN		
15	11.2	1800	1770	256TC	EPNV	K	INV		
PH	Hz	VOLTS	FL AMPS	START TYPE	DUTY	INSL	S.F	AMB°C	ELEVATION
3	60	230/460	36/18	INVERTER ONLY	CONTINUOUS	F3	1.0	40	3300
FULL LOAD EFF: 93		3/4 LOAD EFF: 92.4		1/2 LOAD EFF: 91.7		GTD. EFF		ELEC. TYPE	
FULL LOAD PF: 85		3/4 LOAD PF: 78.5		1/2 LOAD PF: 67.5		91.7		SQ CAGE INV DUTY	
F.L. TORQUE		LOCKED ROTOR AMPS		L.R. TORQUE		B.D. TORQUE		F.L. RISE°C	
44.5 LB-FT		320 / 160		95 LB-FT 213		182 LB-FT 409		80	
SOUND PRESSURE @ 3 FT.	SOUND POWER	ROTOR WK^2	MAX. WK^2	SAFE STALL TIME	STARTS / HOUR	APPROX. MOTOR WGT			
62 dBA	72 dBA	3.2 LB-FT^2	- LB-FT^2	- SEC.	-	375 LBS.			

EQUIVALENT WYE CKT.PARAMETERS (OHMS PER PHASE)

R1	R2	X1	X2	XM
0.29484	0.28161	1.17369	1.03761	34.587
RM	ZREF	XR	TD	TD0
1657.53	18.9	4.76	0.0164	0.336

***** SUPPLEMENTAL INFORMATION *****

DE BRACKET TYPE	ODE BRACKET TYPE	MOUNT TYPE	ORIENTATION	SEVERE DUTY	HAZARDOUS LOCATION	DRIP COVER	SCREENS	PAIN
C-FACE	ENCODER	RIGID	HORIZONTAL	FALSE	EXP PROOF CL I GR C&D CL II GR F&G T3C	FALSE	NONE	BLUE (ENAMEL)

BEARINGS		GREASE	SHAFT TYPE	SPECIAL DE	SPECIAL ODE	SHAFT MATERIAL	FRAME MATERIAL
DE	OPE	POLYREX EM	T	NONE	NONE	1045 HOT ROLLED (C-204)	CAST IRON
BALL	BALL						
6309	6309						

THERMO-PROTECTORS				THERMISTORS	CONTROL	SPACE /n HEATERS
THERMOSTATS	PROTECTORS	WDG RTDs	BRG RTDs	NONE	FALSE	NONE VOLTS
TSTATS (N/C)	NOT	NONE	NONE			

If Inverter equals NONE, contact factory for further information

INVERTER TORQUE: CONSTANT 2000:1
INV. HP SPEED RANGE: 2.0 X BASE SPEED
ENCODER: REGAL SUPPLIED - REGAL MOUNT BEI H38
NPS HOLE 1024 PPR
BRAKE: NONE NONE

*
N
O
T
E
S
*

NONE	P/N	NONE	
NONE	NONE		
NONE FT-LB		NONE V	NONE Hz

DATE: 06/23/2017 04:39:35 AM
FORM 3531 REV.3 02/07/99
** Subject to change without notice.

Data Sheet

Date: 19-06-2017
 Customer: _____
 Attention: _____
 Submitted by: FAREEDA DUDEKULA



256THEN17031

Submittal

Data @ 460 V

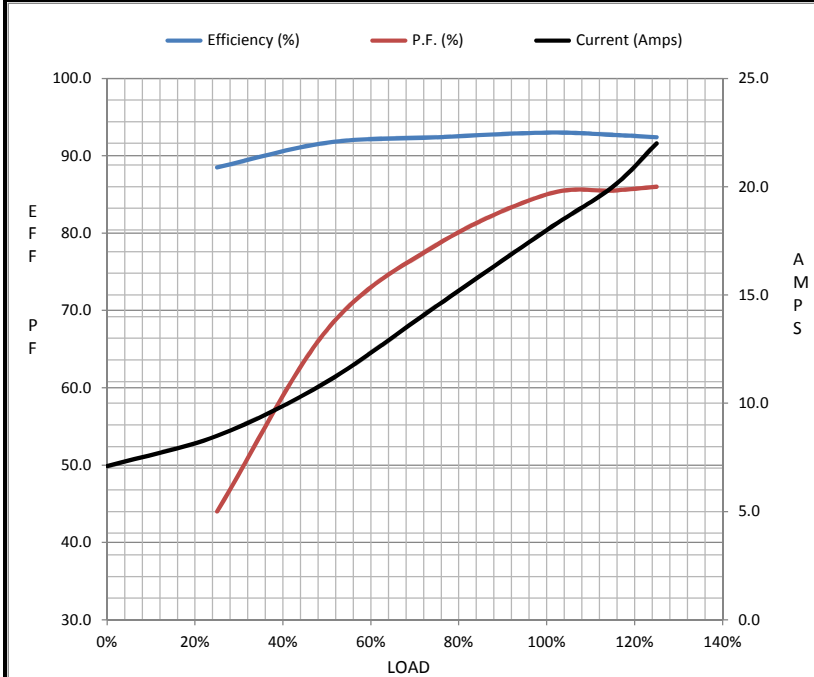
Motor Load Data

Load	0%	25%	50%	75%	100%	115%	125%	LR
Current (Amps)	7.1	8.5	11.0	14.5	18.0	20.0	22.0	160
Torque (ft-lb)	0.00	11.0	22.0	33.5	44.5	50.3	56.0	95.0
RPM	1800	1792	1785	1776	1770	1,765	1758	0
Efficiency (%)		88.5	91.7	92.4	93.0	92.7	92.4	
P.F. (%)	9.0	44.0	67.5	78.5	85.0	85.5	86.0	36.0

Motor Speed Data

	LR	Pull-Up	BD	Rated	Idle
Speed (RPM)	0	885	1555	1770	1800
Current (Amps)	160	144	105	18.0	7.1
Torque (ft-lb)	95.0	80.8	182	44.5	0.00

Information Block				
HP	15.0			
Sync. RPM	1800			
Frame	256			
Enclosure	TENV			
Construction	TTN			
Voltage	230/460 V			
Frequency	60 Hz			
Design	A			
LR Code letter	K			
Service Factor	1.15			
Temp Rise @ FL	80 ° C			
Duty	CONT			
Ambient	40 ° C			
Elevation	1,000 feet			
Rotor/Shaft wk ²	3.2 Lb-Ft ²			
Ref Wdg	K2564196 NONE			
Sound Pressure @ 1M	62 dBA			
VFD Rating	CONSTANT 2000:1			
Outline Dwg	B-SS203518-1225			
Conn. Diag	A-EE7308AD			
Additional Specifications:				
0				
365THFS8036				
EQUIV CKT (OHMS / PHASE)				
R1	R2	X1	X2	Xm
0.2950	0.2820	1.1740	1.0380	34.5870



Speed - Torque Curve

