

# PRODUCT INFORMATION PACKET

Model No: 256TBFR17026

Catalog No: Z129

General Purpose Farm Duty Motor, 15 HP, 1 Ph, 60 Hz, 230 V, 1800 RPM, 256T Frame, TEFC



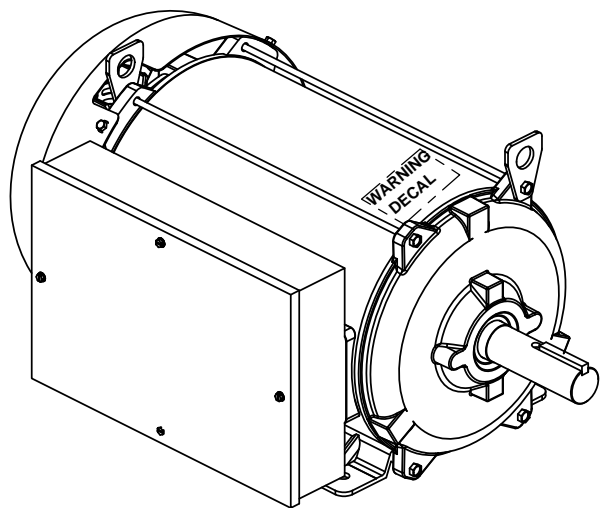
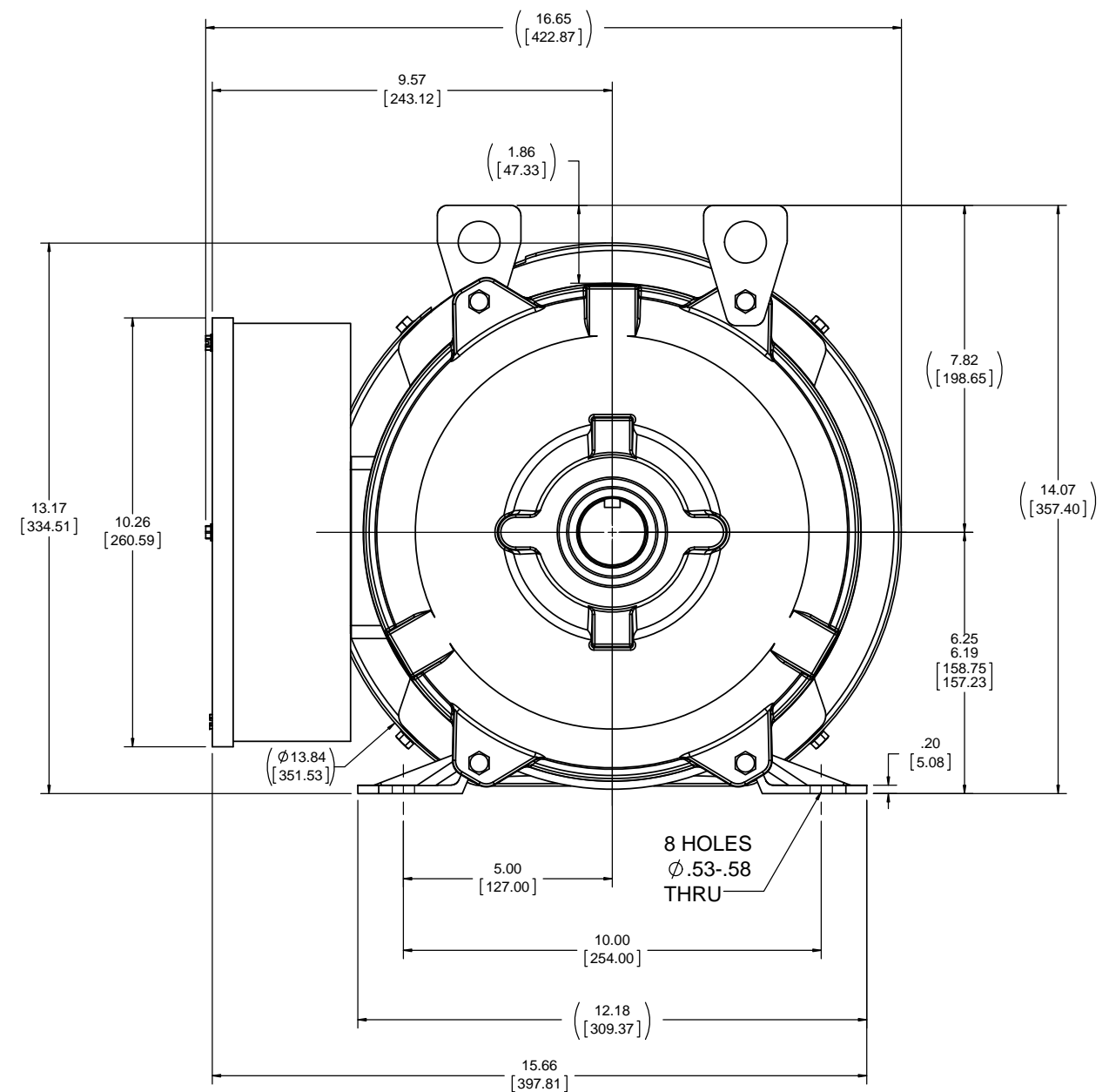
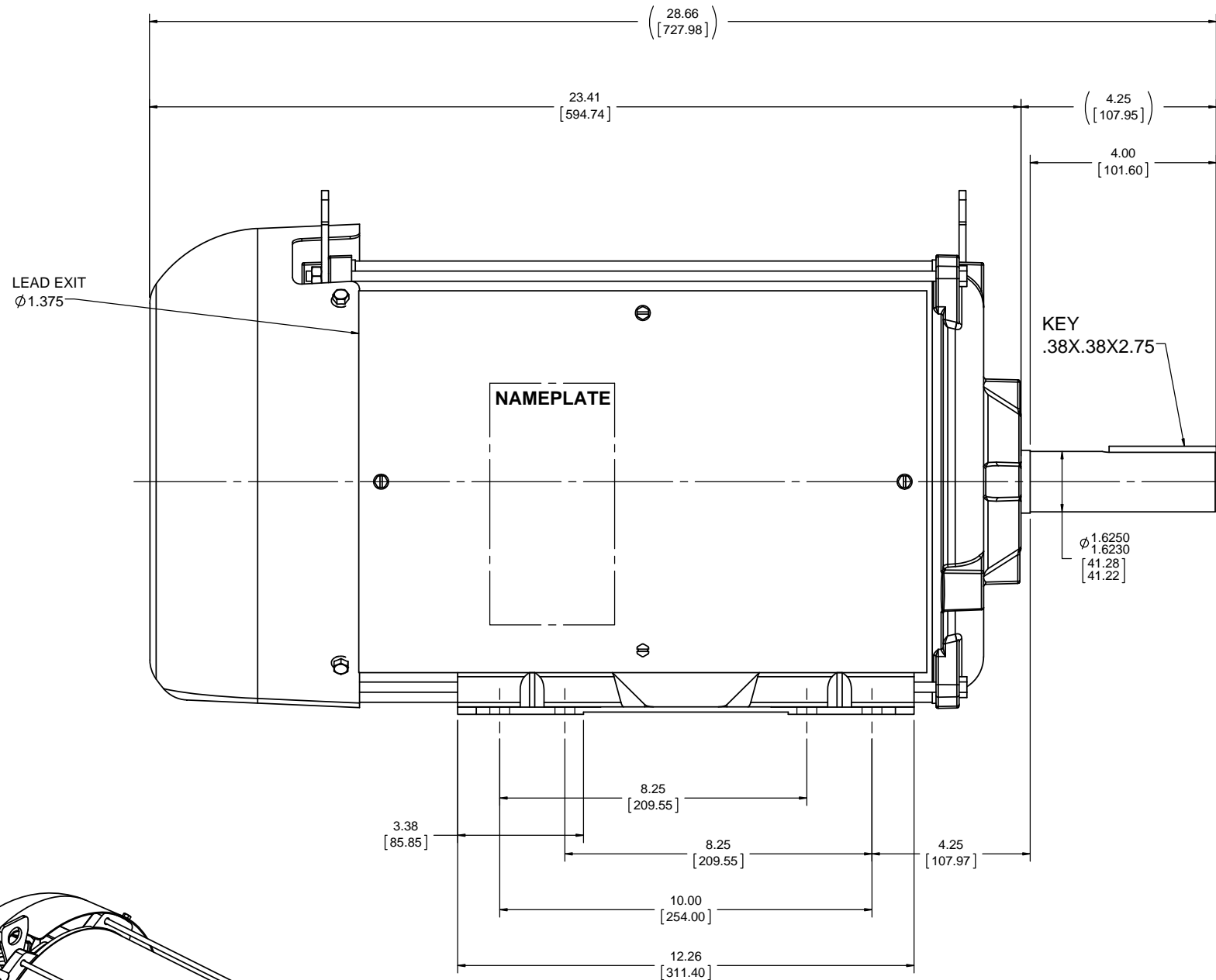
Regal and are trademarks of Regal Rexnord Corporation or one of its affiliated companies.  
©2022 Regal Rexnord Corporation, All Rights Reserved. MC017097E

**Nameplate Specifications**

Output HP	<b>15 Hp</b>	Output KW	<b>11.2 kW</b>
Frequency	<b>60 Hz</b>	Voltage	<b>230 V</b>
Current	<b>58.0 A</b>	Speed	<b>1765 rpm</b>
Service Factor	<b>1</b>	Phase	<b>1</b>
Efficiency	<b>89 %</b>	Power Factor	<b>94.6</b>
Duty	<b>Continuous</b>	Insulation Class	<b>F</b>
Design Code	<b>NO DESIGN CODE</b>	KVA Code	<b>F</b>
Frame	<b>256T</b>	Enclosure	<b>Totally Enclosed Fan Cooled</b>
Thermal Protection	<b>No Protection</b>	Ambient Temperature	<b>40 °C</b>
Drive End Bearing Size	<b>6309</b>	Opp Drive End Bearing Size	<b>6206</b>
UL	<b>Recognized</b>	CSA	<b>Y</b>
CE	<b>Y</b>	IP Code	<b>43</b>
Number of Speeds	<b>1</b>		

**Technical Specifications**

Electrical Type	<b>Capacitor Start Capacitor Run</b>	Starting Method	<b>Across The Line</b>
Poles	<b>4</b>	Rotation	<b>Selective Counterclockwise</b>
Resistance Main	<b>.089 Ohms</b>	Mounting	<b>Rigid Base</b>
Motor Orientation	<b>Horizontal</b>	Drive End Bearing	<b>Ball</b>
Opp Drive End Bearing	<b>Ball</b>	Frame Material	<b>Rolled Steel</b>
Shaft Type	<b>T</b>	Overall Length	<b>28.66 in</b>
Frame Length	<b>15.50 in</b>	Shaft Diameter	<b>1.625 in</b>
Shaft Extension	<b>4.00 in</b>	Assembly/Box Mounting	<b>F1 ONLY</b>
Outline Drawing	<b>610-0021-1550</b>	Connection Drawing	<b>D0000503-002</b>



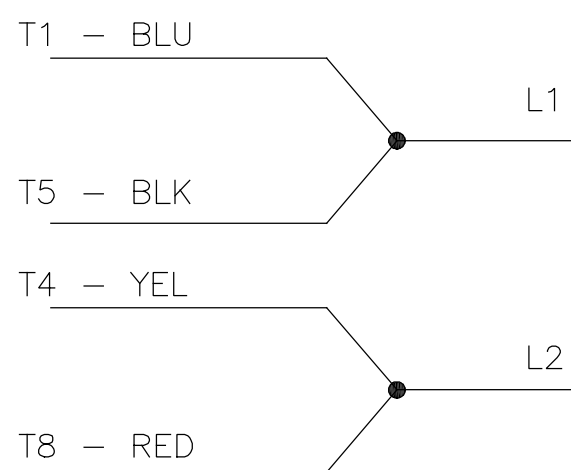
NOTES:

- SPECIAL CONDUIT BOX MOUNTING
- MOTOR NAMEPLATE MUST HAVE WIRING DIAGRAM

DRAWING REVISION	REVISION BY	DATE	TOLERANCES UNLESS OTHERWISE SPECIFIED:	DRAWN BY	AS
A	AS	11/24/2016	DEC. $\pm 0.1$ [2.5]	DATE	11/24/2016
ECO-0113697	APPROVED BY	DATE	.XX $\pm 0.01$ [0.25]	APPROVED BY	SS
ECO DESCRIPTION	SS	11/24/2016	.XXX $\pm 0.005$ [0.127]	DATE	11/24/2016
NEW DRAWING			XXXX $\pm 0.0005$ [0.0127]	REFERENCE	610-0007
<small>                 COPYRIGHT REGAL BELOIT AMERICA, INC. ALL RIGHTS RESERVED.                  PROPRIETARY AND CONFIDENTIAL INFORMATION - THIS DOCUMENT IS THE PROPERTY OF REGAL BELOIT AMERICA, INC. OWNERS AND CONTAINS OWNERS PROPRIETARY INFORMATION. ANY PERSON, CORPORATION OR OTHER FIRM RECEIVING IT IS DEEMED, BY RECEIVING IT, TO AGREE THAT IT, AND/OR ANY PART OF IT, SHALL NOT BE DISCLOSED TO ANY PERSON, CORPORATION OR OTHER ENTITY, DUPLICATED, AND/OR USED, EXCEPT AS EXPRESSLY APPROVED IN WRITING IN ADVANCE BY OWNER. THIS DOCUMENT SHALL BE RETURNED TO OWNER UPON REQUEST. IT MAY BE SUBJECT TO CERTAIN RESTRICTIONS UNDER APPLICABLE EXPORT CONTROL LAWS AND REGULATIONS.             </small>			REMOVE BURRS & BREAK SHARP EDGES: 0.03/015 [076/391] X 45° CORNER FILLETS: R.02 [51] MACHINED SURFACES: 125/32 mm SHOWN IN [BRACKETS]	DESCRIPTION <b>MOTOR ASSY</b> OUTLINE	MATERIAL PROCESS FINISH
REGAL BELOIT AMERICA, Inc.			THIRD ANGLE PROJECTION	SIZE D	DRAWING NUMBER 610-0021
					SHEET 1 OF 1

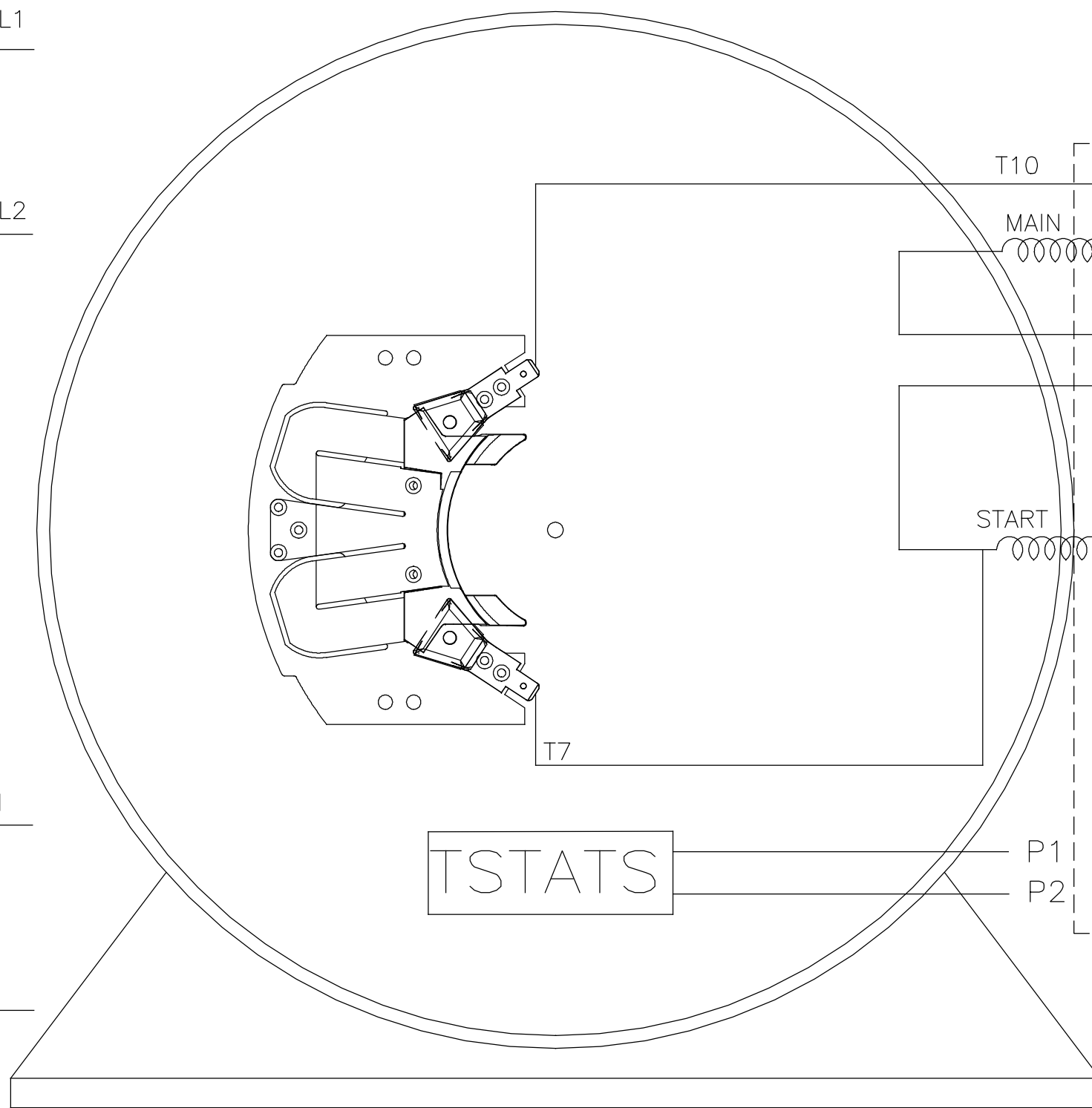
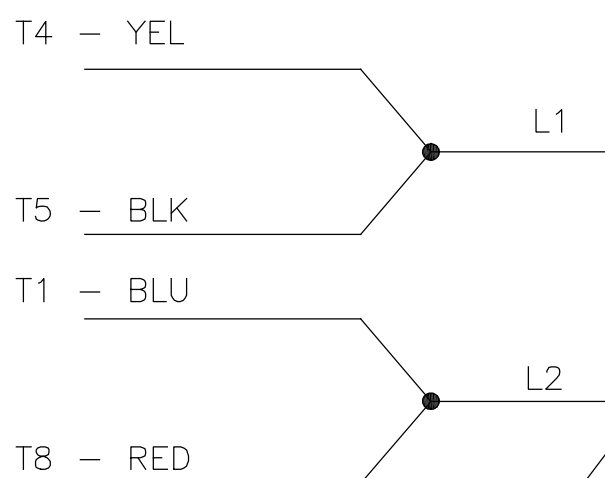
REV	ECO	REV BY	DATE	APPD	DATE
C	ECO-0135426	MVG	12-01-17	MSD	12-01-17

C.W. ROTATION  
FACING LEAD END

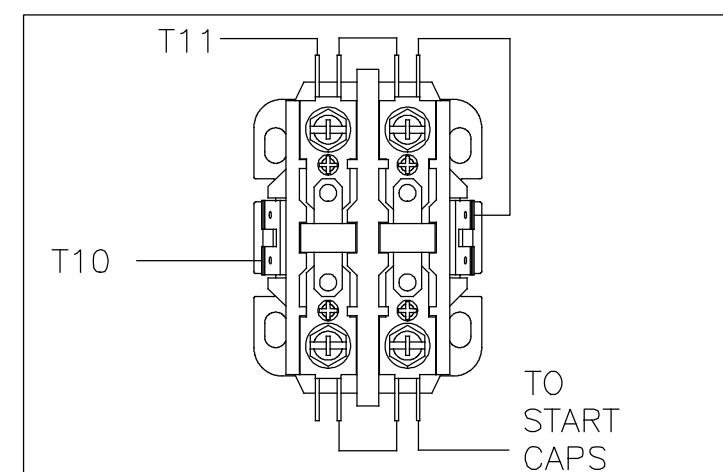


SINGLE VOLTAGE - CAPACITOR START - CAPACITOR RUN  
FIXED ROTATION

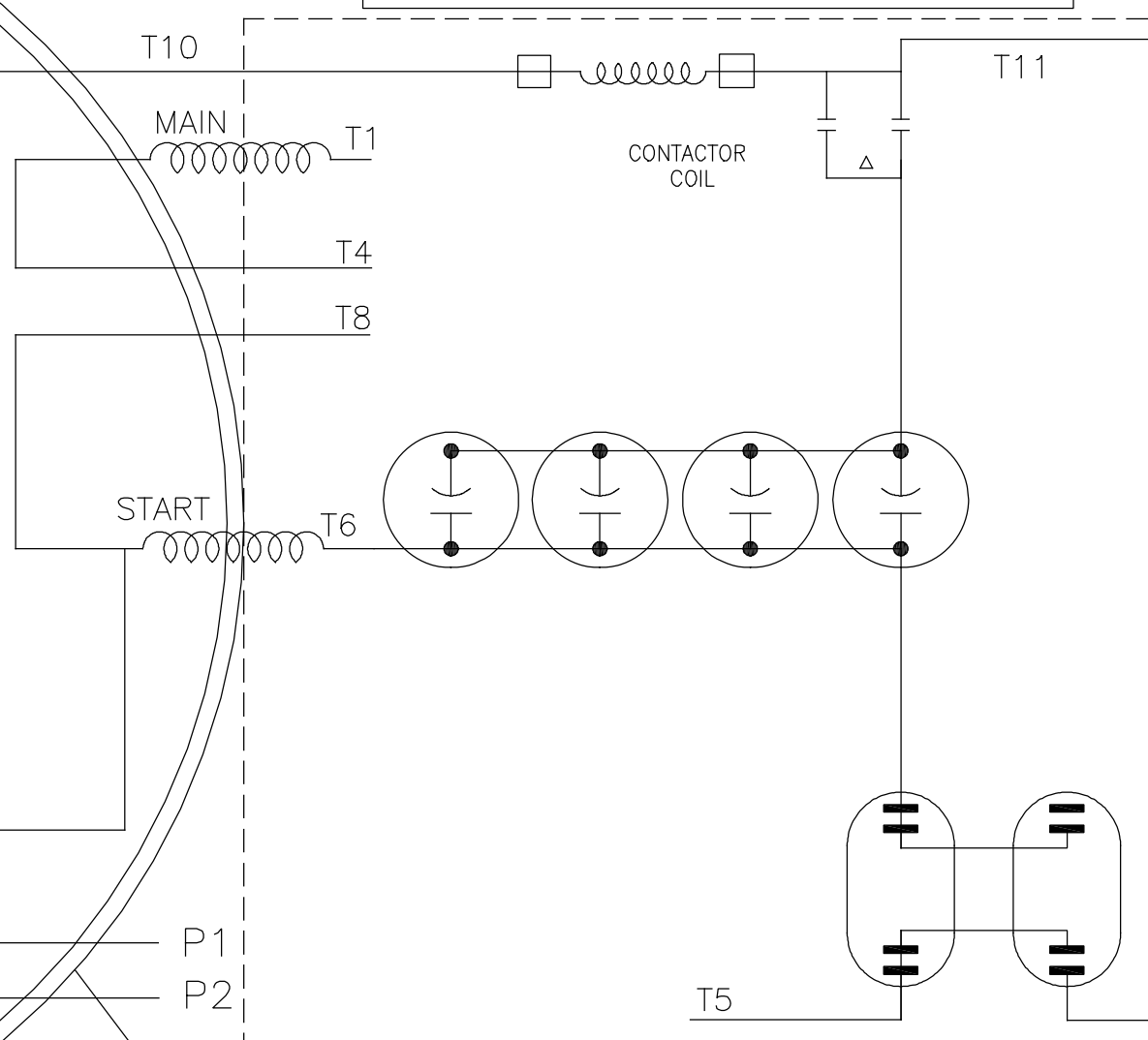
C.C.W. ROTATION  
FACING LEAD END



VIEW OF TERMINAL END



△△ SCREW SIDE  
△ SPADE SIDE



CONNECT:  
START CAPACITORS  
IN PARALLEL.  
RUN CAPACITORS  
IN PARALLEL.

GEOMETRIC CHARACTERISTICS & SYMBOLS

- ▭ FLATNESS
- STRAIGHTNESS
- ∠ ANGULARITY
- ⊥ PERPENDICULARITY (SQUARENESS)
- // PARALLELISM
- ROUNDNESS (CIRCULARITY)
- ⊘ CYLINDRICITY
- △ PROFILE OF ANY SURFACE
- ⌒ PROFILE OF ANY LINE
- ↑ RUNOUT
- ⊕ TRUE POSITION
- ◎ CONCENTRICITY
- ≡ SYMMETRY

ASME Y14.5M 1994

UNLESS OTHERWISE SPECIFIED  
DIM. TOLERANCES ARE AS FOLLOWS:

INCH	±.1	±.02	±.005	±.0005
mm	±0.5	±0.13	±0.13	

ANG. ±.50 DEG  
REMOVE BURRS & BREAK SHARP EDGES:  
INCH .003-.015 mm 0.1-0.4  
CORNER FILLETS TO:  
INCH .020 mm 0.5  
MACHINE SURFACES:  
INCH  $\sqrt{3}$  mm  $\sqrt{3}$   
METRIC DIMS. SHOWN IN [BRACKETS]

DR BY:	RK	11/07/16
APPD:		
THIRD ANGLE PROJECTION		EDS DATE FORMAT REV H
CONFIDENTIAL: THIS DRAWING AND ITS INFORMATION ARE THE EXCLUSIVE AND CONFIDENTIAL PROPERTY OF REGAL-BELOIT CORPORATION AND ARE NOT TO BE DISCLOSED, DUPLICATED, DISTRIBUTED OR OTHERWISE USED WITHOUT THE WRITTEN CONSENT OF REGAL-BELOIT CORPORATION. -ALL RIGHTS RESERVED.		

<b>REGAL</b> REGAL-BELOIT CORPORATION	
DESCRIPTION Connection Diagram 180-210 Switch WITH TSTATS	
SIZE C	DWG NO D0000503-002
SCALE NONE	SHEET 1

**CERTIFICATION DATA SHEET**

**P.O. BOX 8003  
 WAUSAU, WI 54401-8003  
 PH. 715-675-3311**

**CONN. DIAGRAM:** D0000503-002

**MODEL #:** 256TBFR17026 AA

**OUTLINE:** 610-0021-1550

**MOUNTING:** F1 ONLY

**WINDING #:** BG11402 R1 1

**TYPICAL MOTOR PERFORMANCE DATA**

HP	kW	SYNC. RPM	F.L. RPM	FRAME	ENCLOSURE	KVA CODE	DESIGN
15	11.2	1800	1765	256T	TEFC	F	NO DESIGN CODE

PH	Hz	VOLTS	AMPS	START TYPE	DUTY	INSL	S.F.	AMB°C
1	60	230	58	ACROSS THE LINE	CONTINUOUS	F4	1.0	40

FULL LOAD EFF:	89	3/4 LOAD EFF:	88.6	1/2 LOAD EFF:	86	GTD. EFF	ELEC. TYPE
FULL LOAD PF:	94.6	3/4 LOAD PF:	94.3	1/2 LOAD PF:	92.2	0	CAP START CAP RUN

F.L. TORQUE	LOCKED ROTOR AMPS	L.R. TORQUE	B.D. TORQUE	F.L. RISE°C
44.6 LB-FT	335	150 LB-FT 335 %	102 LB-FT 228 %	105

SOUND PRESSURE @ 3 FT.	SOUND POWER	ROTOR WK^2	MAX. WK^2	SAFE STALL TIME	STARTS / HOUR	APPROX. MOTOR WGT
0 dBA	10 dBA	0 LB-FT^2	150 LB-FT^2	10 SEC.	3	0 LBS.

**\*\*\* SUPPLEMENTAL INFORMATION \*\*\***

DE BRACKET TYPE	ODE BRACKET TYPE	MOUNT TYPE	ORIENTATION	SEVERE DUTY	HAZARDOUS LOCATION	DRIP COVER	SCREENS	PAINT
STANDARD	STANDARD	RIGID	HORIZONTAL	FALSE	NONE	FALSE	NONE	BLUE (ENAMEL)

BEARINGS		GREASE	SHAFT TYPE	SPECIAL DE	SPECIAL ODE	SHAFT MATERIAL	FRAME MATERIAL
DE	ODE						
BALL	BALL	POLYREX EM	T	NONE	NONE	AISI 1045 (C-240)	ROLLED STEEL
6309	6206						

THERMO-PROTECTORS				THERMISTORS	CONTROL	SPACE HEATERS
THERMOSTATS	PROTECTORS	WDG RTDs	BRG RTDs			
TSTATS (N/C)	NOT	NONE	NONE	NONE	FALSE	NONE VOLTS

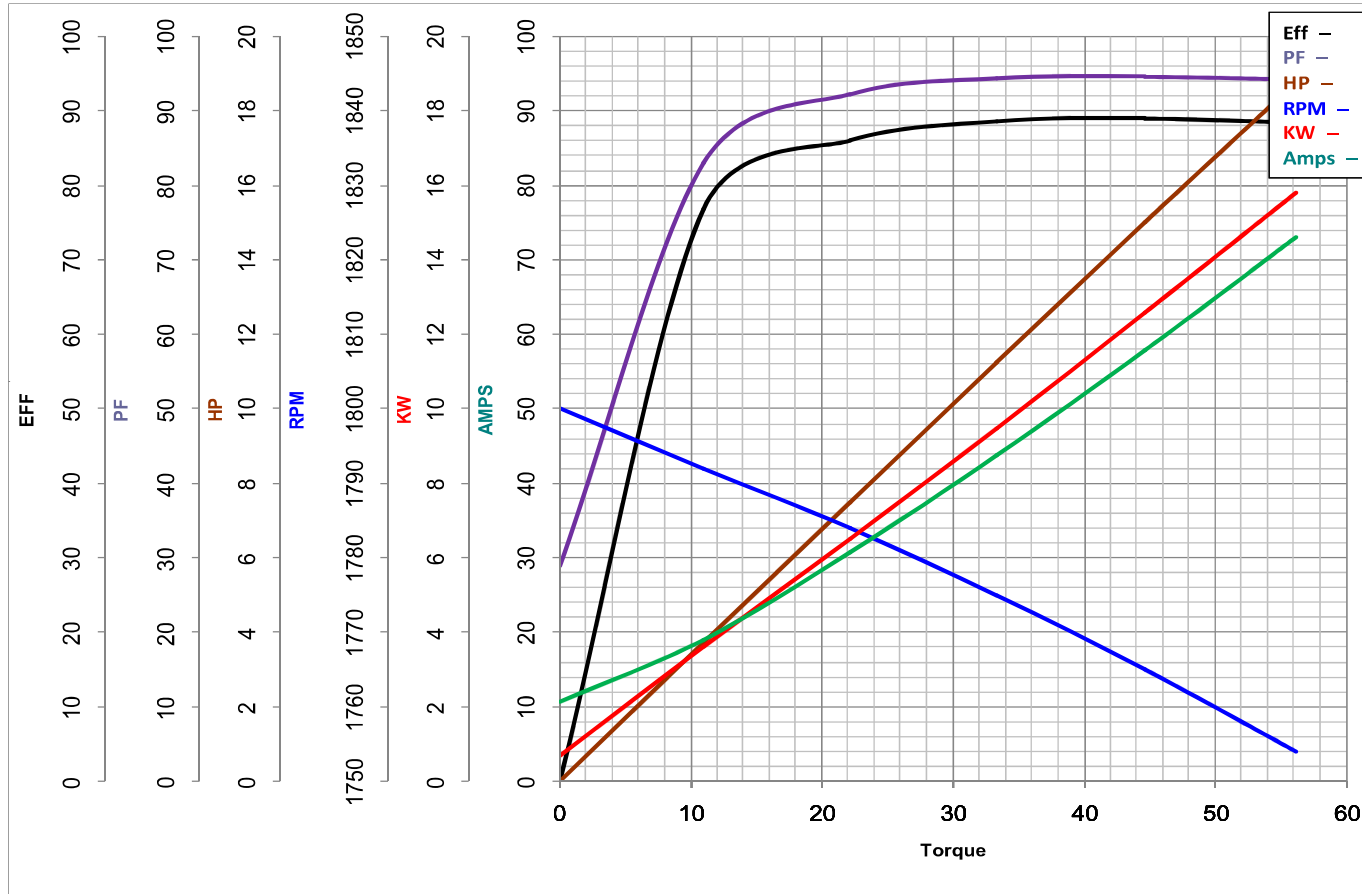
\*  
N  
O  
T  
E  
S  
\*

<b>INVERTER TORQUE:</b> NONE
<b>INV. HP SPEED RANGE:</b> NONE
<b>ENCODER:</b> NONE
NONE NONE
NONE NONE PPR
<b>BRAKE:</b> NONE NONE
NONE P/N NONE
NONE NONE
NONE FT-LB NONE V NONE Hz

**MARATHON ELECTRIC CORPORATION**

TYPICAL PERFORMANCE CURVE for AC MOTOR

Customer \_\_\_\_\_ Curve at 230 Volts HP 15.00 PHASE 1  
 Model No 256TBFR17026 60 HZ  
15 HP VOLTS 230  
 Catalog No Z129 HZ 60 RPM 1765



				Torque in Lb.Ft	
FL TORQUE	<u>44.6</u>	Lb.Ft	FL AMPS	<u>58</u>	
BD TORQUE	<u>102.0</u>	Lb.Ft	PU TORQUE	<u>68.0</u>	Lb.Ft
LR TORQUE	<u>150</u>	Lb.Ft	LR AMPS	<u>335</u>	
WINDING	BG11402-1		Date	11/5/2018	