

PRODUCT INFORMATION PACKET

Model No: 254VTDC6026

Catalog No: V113A

Vertical Pump Motor, 15 & 10 HP, 3 Ph, 60 & 50 Hz, 230/460 & 190/380 V, 1800 & 1500 RPM,
254TPV Frame, WPI



Regal and Marathon are trademarks of Regal Rexnord Corporation or one of its affiliated companies.

©2023 Regal Rexnord Corporation, All Rights Reserved. MC017097E

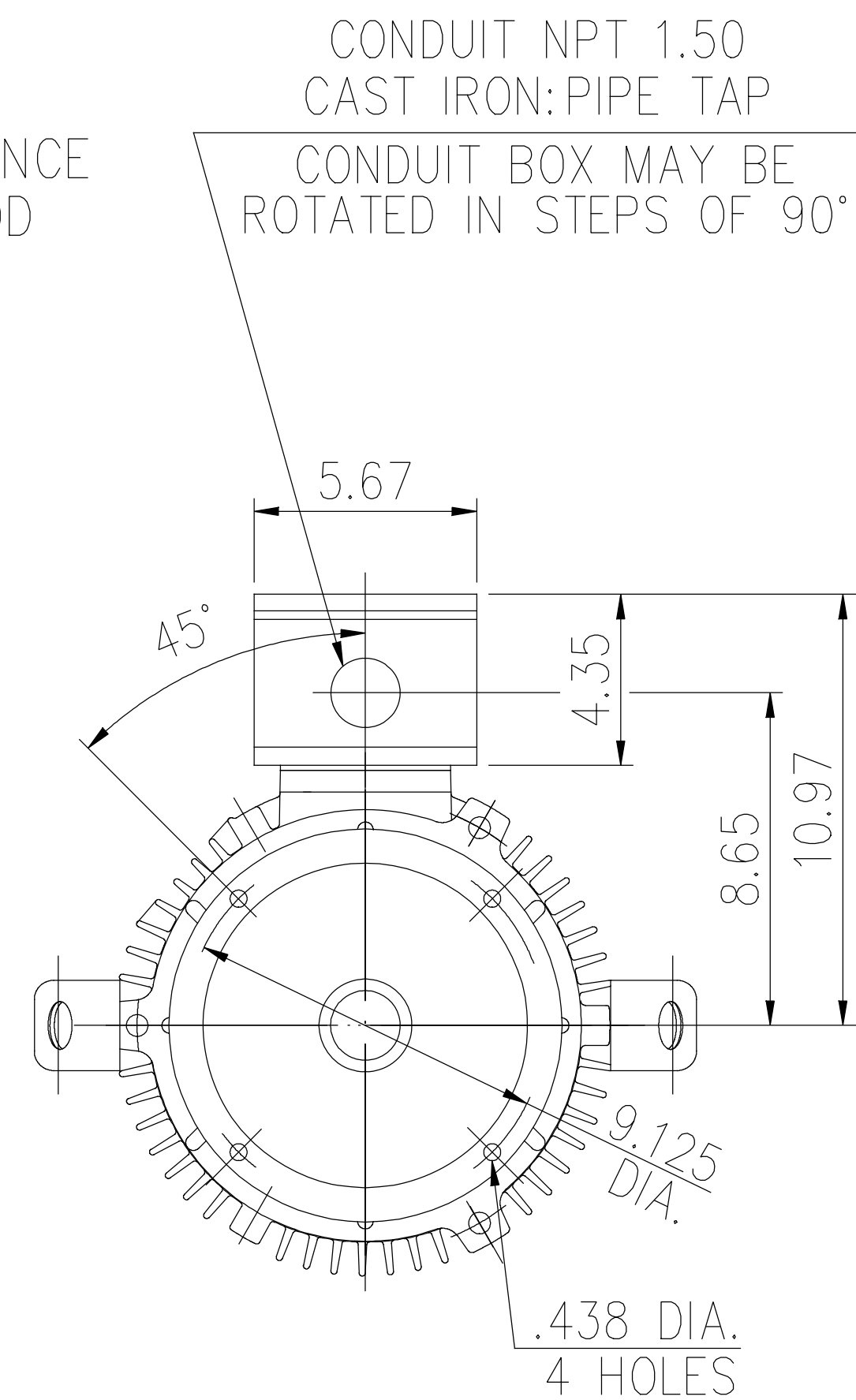
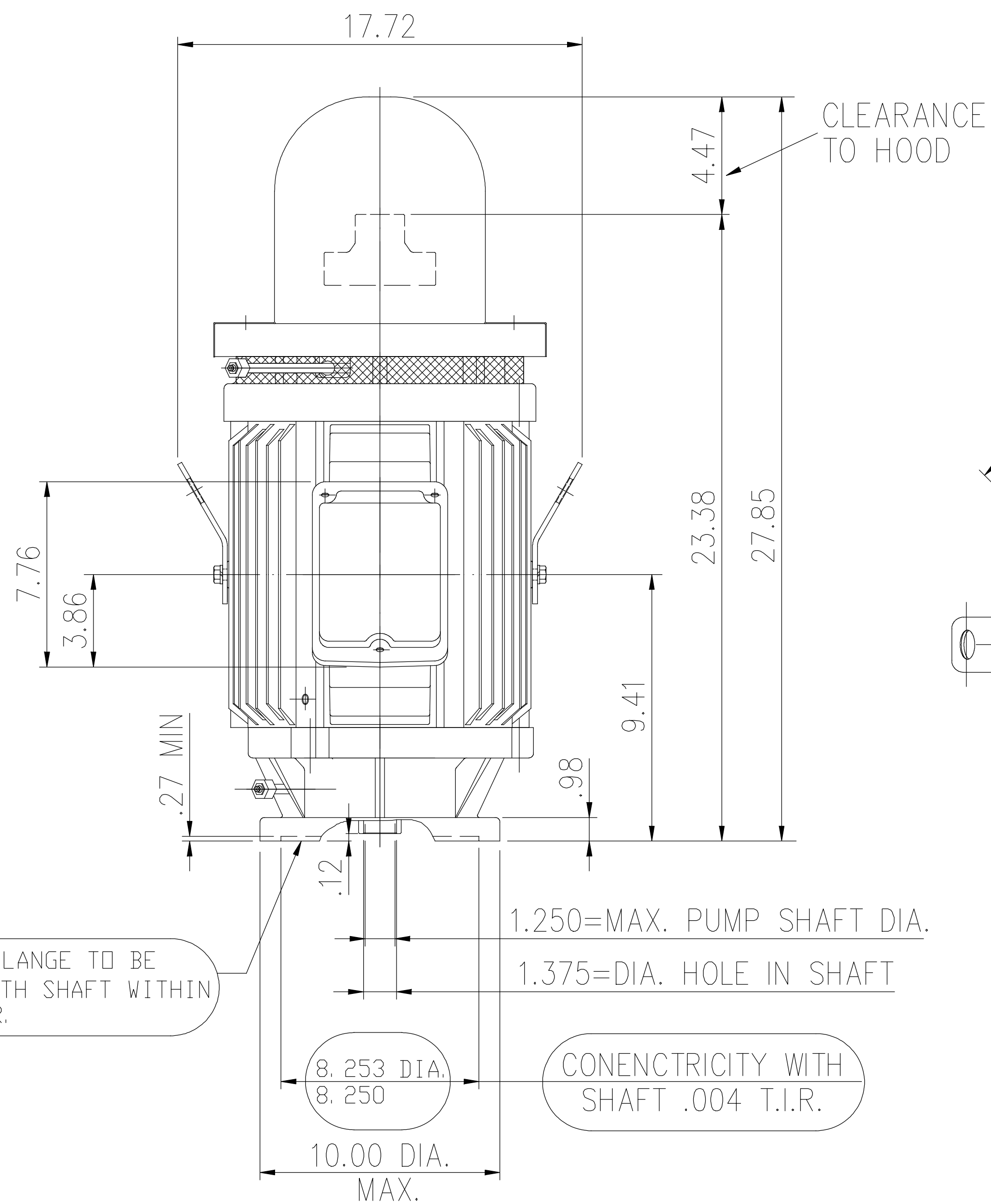
Nameplate Specifications

Phase	3	Output HP	15 & 10 Hp
Output KW	11.2 & 7.5 kW	Voltage	230/460 & 190/380 V
Speed	1760 & 1465 rpm	Service Factor	1.15 & 1.15
Frame	254TPV	Enclosure	Weather Protected 1
Thermal Protection	No Protection	Efficiency	93 & 91.7 %
Ambient Temperature	40 °C	Frequency	60 & 50 Hz
Current	37/18.4 & 30.5/15.3 A	Power Factor	82
Duty	Continuous	Insulation Class	F
Design Code	B	KVA Code	G
Drive End Bearing Size	6309	Opp Drive End Bearing Size	7311B
UL	Recognized	CSA	Y
CE	Y	IP Code	23
Number of Speeds	1		

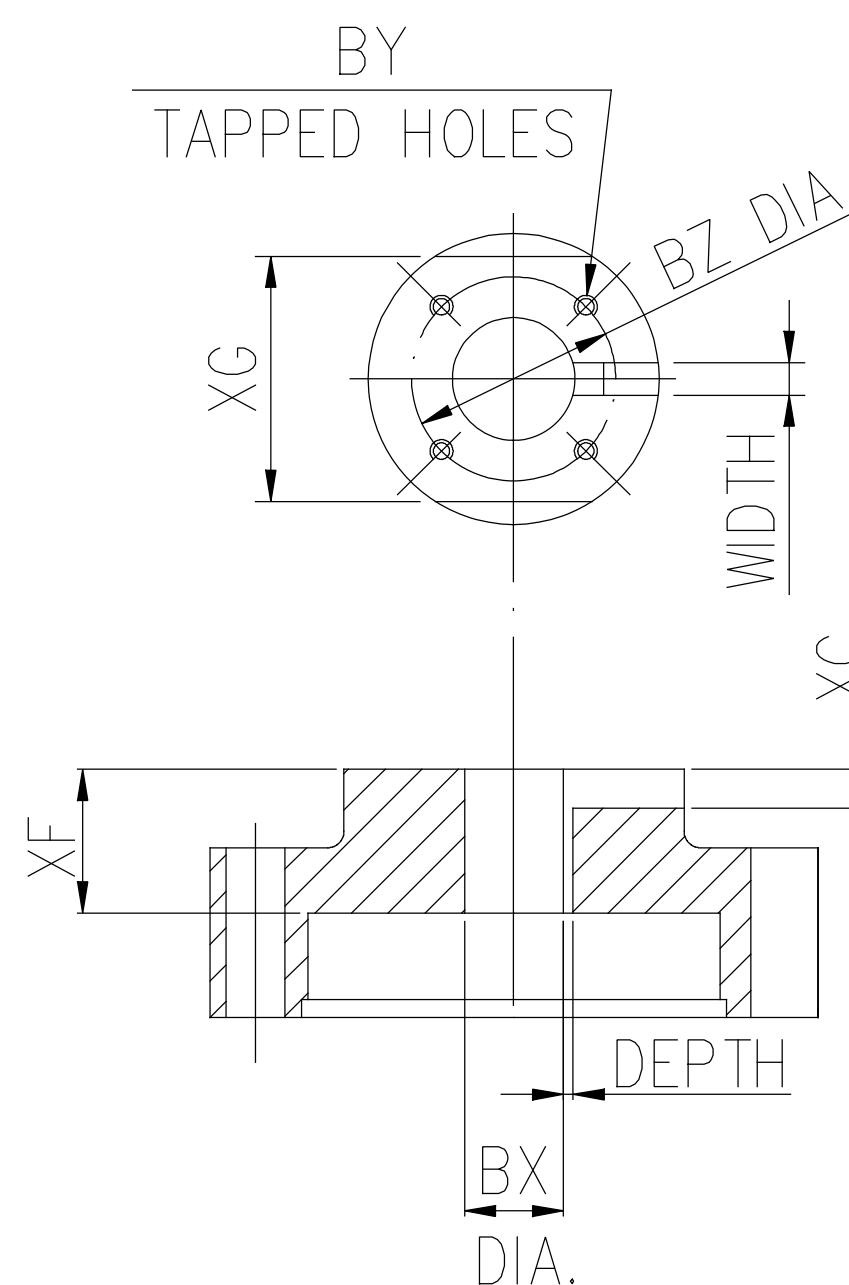
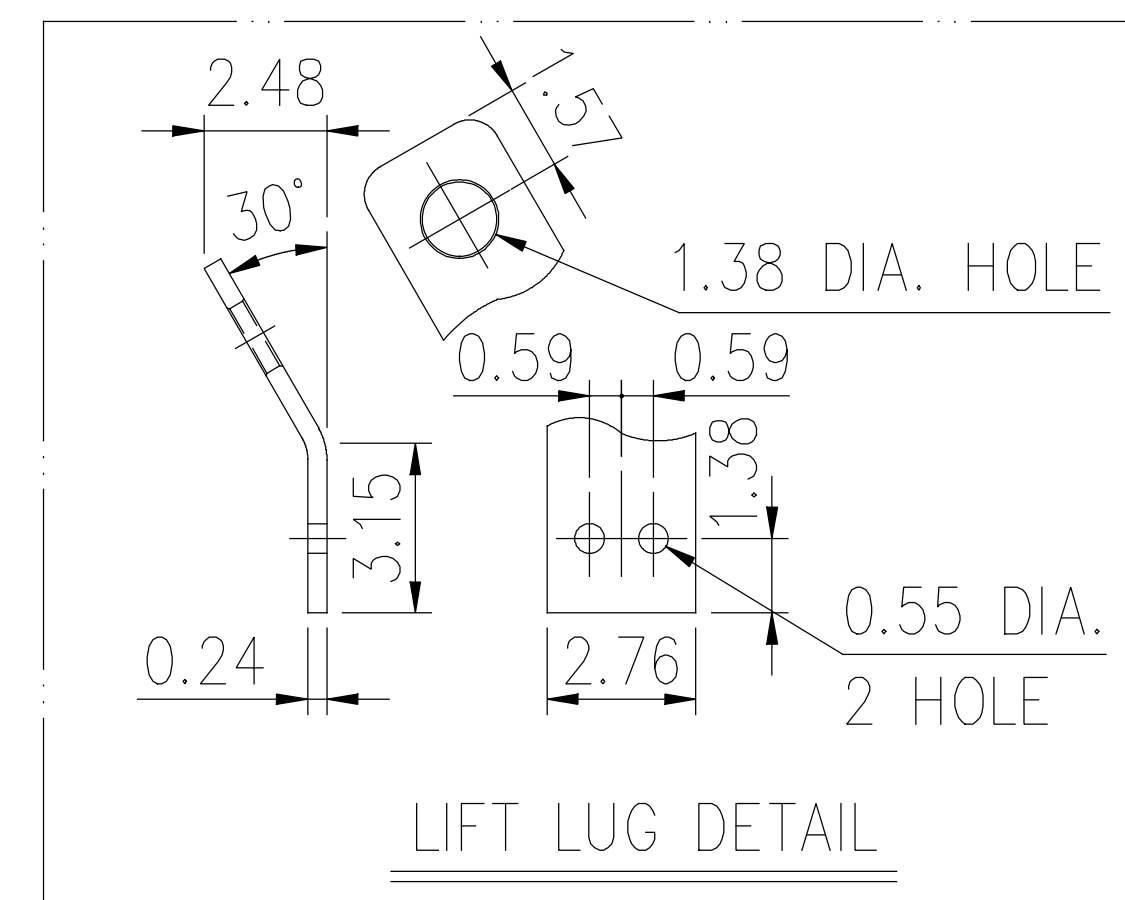
Technical Specifications

Electrical Type	Squirrel Cage Inverter Rated	Starting Method	Part Wdg Start Low Volt Only & Wye Start Delta Run Or Inverter
Poles	4	Rotation	Counterclockwise Rotation, Reversible without Non-Reversible Ratchet
Mounting	Round	Motor Orientation	Shaft Down
Drive End Bearing	Ball	Opp Drive End Bearing	Single Angular Contact
Frame Material	Cast Iron	Shaft Type	TP
Overall Length	27.85 in	Shaft Diameter	1.375 in
Shaft Extension	0.12 in	Assembly/Box Mounting	F1/F2 CAPABLE
Inverter Load	VARIABLE 3:1		
Outline Drawing	SS620834	Connection Drawing	EE7308DX

COUPLING	BX DIA.	KEYWAY		BY	BZ	XF	XC
		WIDE	DEEP				
	1.001	0.250	0.140	10-32UNF	1.375	1.650	0.430
	1.188	0.250	0.140	1/4-20UNC	1.750	1.650	0.430
	1.251	0.250	0.140	1/4-20UNC	1.750	1.650	0.430
	0.751	N/A	N/A	N/A	N/A	N/A	N/A



BOTTOM VIEW OF MOTOR

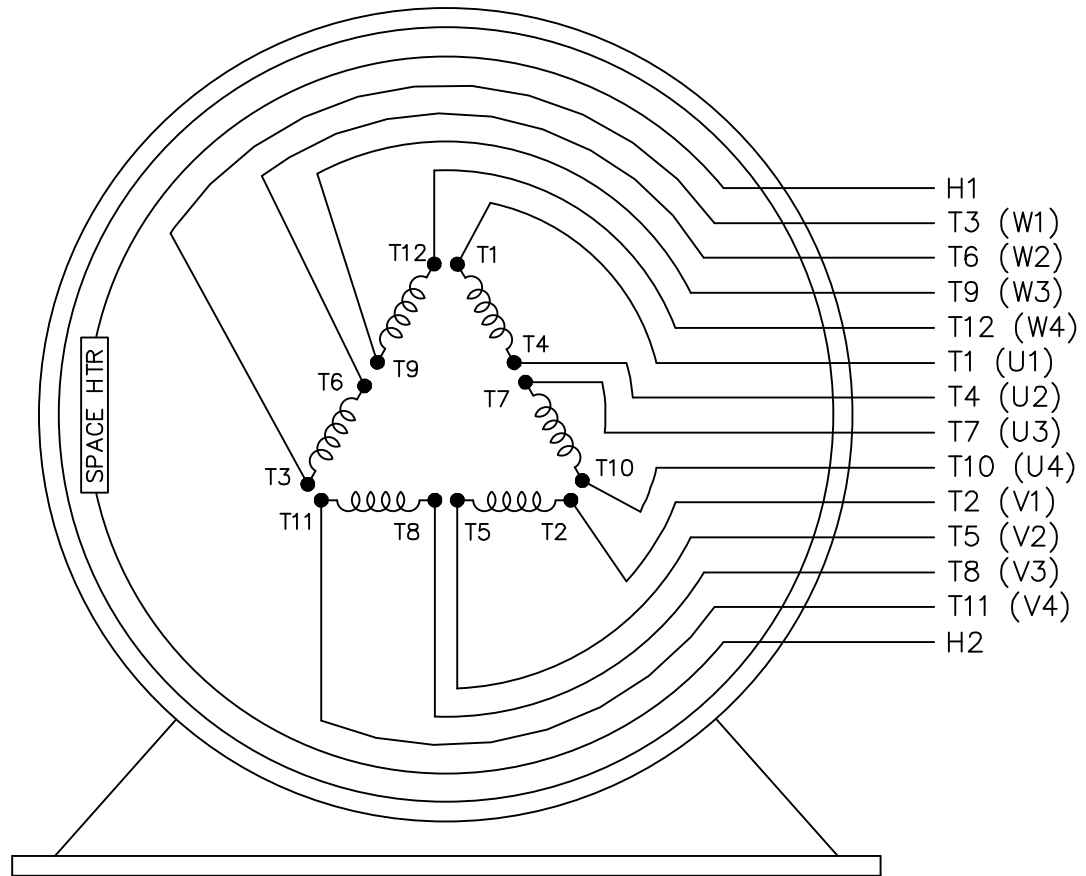
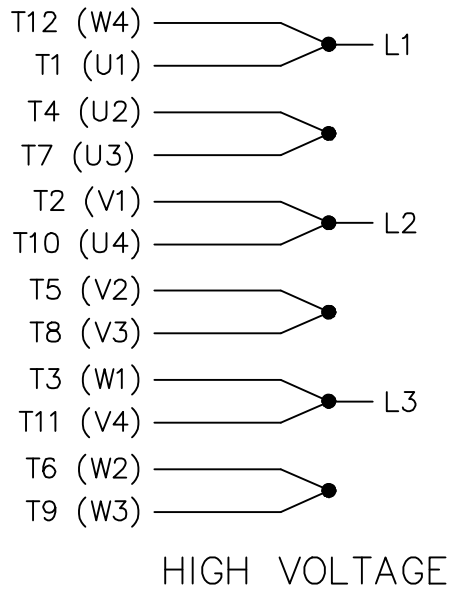
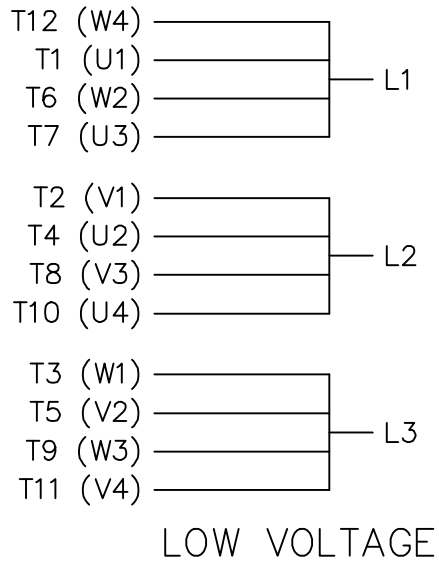


COUPLING

- (1) DIMENSIONS ARE IN INCHES.
- (2) DRIVE END BEARING 6309
OPPOSITE DRIVE END BEARING 7311B
- (3) APPROXIMATE WEIGHT = 370 LBS

- (4) END OF LINE TESTS - SPECIFIC TO EACH RATING
 - *NO LOAD AMPS @ FULL VOLTAGE
 - *NO LOAD WATTS @ FULL VOLTAGE
 - *VIBRATION MEETS MG-1 STANDARD
 - BALANCE 0.15 IN/S 3.8 MM/S

				TOLERANCES UNLESS SPECIFIED		REGAL REGAL-BELOIT CORPORATION		DRAWN		
				DEC.	INCHES			CHK		
				.X	±.1			APPD		
				.XX	±.03	TITLE		SCALE		
B	UPDATED PER MARK-UPS	ECO-0151417	WGJ 9-7-2018	AL	.XXX	±.005	OUTLINE		REF	
A	RELEASED FOR PRODUCTION	ECO-0125213	WGJ 6-13-2017	AL	.XXXX	±.0005	254/256TP10 FRAME		FMF	
NO.	REVISION		BY & DATE	CHK	ANG	±7'30"	FINISH		PREV	
THIS DRAWING IN DESIGN AND DETAIL IS OUR PROPERTY AND MUST NOT BE USED EXCEPT IN CONNECTION WITH OUR WORK ALL RIGHTS OF DESIGN AND INVENTION ARE RESERVED THIS IS AN ELECTRONICALLY GENERATED DOCUMENT - DO NOT SCALE THIS PRINT				RFP	CAD FILE			SIZE	DRAWING NO.	REV.
				DIST				B	SS620834	B



VIEW OF TERMINAL END

				TOLERANCES UNLESS SPECIFIED		MARATHON ELECTRIC	DRAWN KL 02-05-1999			
				DEC.	INCHES		CHK DJK 02-05-1999			
				.X	± -	TITLE CONNECTION DIAGRAM 12 LEADS - 3 PHASE - 2/1 DELTA	APPD DJK 02-05-1999	SCALE 1=1		
2	ADDED IEC MARKINGS	MU110339	MSG 10-15-2012	SJW .XXX	± -		REF			
1	NEW DRAWING	MU23624	KL 02-05-1999	DJK .XXXX	± -	MAT'L.	FMF	MU23624		
NO.	REVISION	BY & DATE	CHK	ANG	± -	FINISH	PREV			
THIS DRAWING IN DESIGN AND DETAIL IS OUR PROPERTY AND MUST NOT BE USED EXCEPT IN CONNECTION WITH OUR WORK ALL RIGHTS OF DESIGN AND INVENTION ARE RESERVED THIS IS AN ELECTRONICALLY GENERATED DOCUMENT - DO NOT SCALE THIS PRINT				RFP	02-05-1999	CAD FILE EE7308DX	SIZE A	DRAWING NO. EE7308DX	PAGE OF 2	REV. 2
				DIST						

**P.O. BOX 8003
 WAUSAU, WI 54401-8003
 PH. 715-675-3311**

CERTIFICATION DATA SHEET

CONN. DIAGRAM: EE7308DX

MODEL #: 254VTDC6026 AA

OUTLINE: SS620834

MOUNTING: F1/F2 CAPABLE

WINDING #: TPE2544001 1

TYPICAL MOTOR PERFORMANCE DATA

HP	kW	SYNC. RPM	F.L. RPM	FRAME	ENCLOSURE	KVA CODE	DESIGN
15&10	11.2&7.50	1800	1760&1465	254TPV	WPI	G	B

PH	Hz	VOLTS	AMPS	START TYPE	DUTY	INSL	S.F.	AMB° C
3	60/50	230/460&190/380	37/18.4&30.5/15.3	PWS (LV ONLY) & YDRUN OR INV	CONTINUOUS	F	1.15/1.15	40

FULL LOAD EFF:	93&91.7	3/4 LOAD EFF:	94.3	1/2 LOAD EFF:	94.2	GTD. EFF	ELEC. TYPE
FULL LOAD PF:	82&81	3/4 LOAD PF:	78.9	1/2 LOAD PF:	68.3	92.4	SQ CAGE INV RATED

F.L. TORQUE	LOCKED ROTOR AMPS	L.R. TORQUE	B.D. TORQUE	F.L. RISE°C
44.7 LB-FT	236 / 118	80 LB-FT 180 %	120 LB-FT 270 %	40

SOUND PRESSURE @ 3 FT.	SOUND POWER	ROTOR WK^2	MAX. WK^2	SAFE STALL TIME	STARTS / HOUR	APPROX. MOTOR WGT
67 dBA	77 dBA	2 LB-FT^2	214 LB-FT^2	12 SEC.	2	300 LBS.

***** SUPPLEMENTAL INFORMATION *****

DE BRACKET TYPE	ODE BRACKET TYPE	MOUNT TYPE	ORIENTATION	SEVERE DUTY	HAZARDOUS LOCATION	DRIP COVER	SCREENS	PAINT
P-BASE-10	STANDARD	ROUND	SHAFT DOWN	FALSE	NONE	TRUE	RODENT	BLUE (ENAMEL)

BEARINGS		GREASE	SHAFT TYPE	SPECIAL DE	SPECIAL ODE	SHAFT MATERIAL	FRAME MATERIAL
DE	ODE						
BALL	SINGLE ANGULAR CONTACT	POLYREX EM	TP	NONE	NONE	1045 HOT ROLLED (C-204)	CAST IRON
6309	7311B						

THERMO-PROTECTORS				THERMISTORS	CONTROL	SPACE HEATERS
THERMOSTATS	PROTECTORS	WDG RTDs	BRG RTDs			
NONE	NOT	NONE	NONE	NONE	FALSE	110 VOLTS

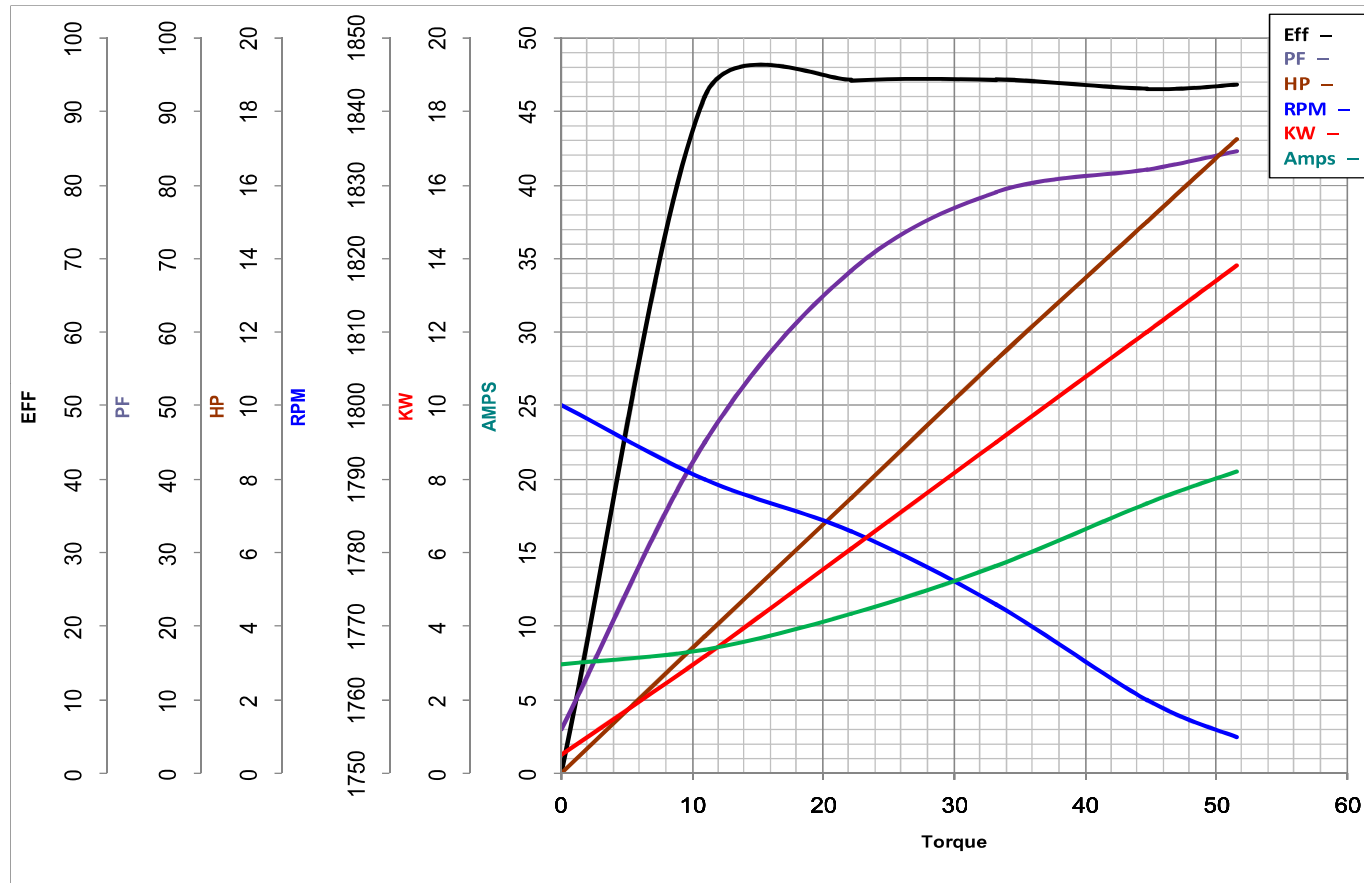
*
N
O
T
E
S

INVERTER TORQUE: VARIABLE 3:1
INV. HP SPEED RANGE: NONE
ENCODER: NONE
NONE NONE
NONE NONE PPR
BRAKE: NONE NONE
NONE P/N NONE
NONE NONE
NONE FT-LB NONE V NONE Hz

MARATHON ELECTRIC CORPORATION

TYPICAL PERFORMANCE CURVE for AC MOTOR

Customer _____ Curve at 460 Volts HP 15&10 PHASE 3
 Model No 254VTDC6026 60 HZ
15 HP VOLTS 230/460&190/380
 Catalog No V113A HZ 60&50 RPM 1760&1465



Torque in Lb.Ft

FL TORQUE 44.7 Lb.Ft
 BD TORQUE 120.0 Lb.Ft
 LR TORQUE 80 Lb.Ft

FL AMPS 37/18.4
 PU TORQUE 80.0 Lb.Ft
 LR AMPS 118

WINDING TPE2544001-1 Prepared By ANUSHA.M Date 11/5/2018

EC Declaration of Conformity

The undersigned representing
the manufacturer:

Regal Beloit America
100 East Randolph St.
Wausau, WI 54401

and the authorized representative
established within the Community:

Marathon Electric UK
6F Thistleton Road Ind. Estate
Market Overton
Oakham, Rutland LE15 7PP UK

are committed to providing customers with products that comply with applicable regulations and international protocols to which they are subject, including the requirements of the European Parliament Directive on the Harmonization of the laws relating to electrical equipment designed for use within certain voltage limits (2014/35/EU).

Regal Beloit America declares that the following product(s), to which this declaration relates, are in conformity with the relevant sections of the EC standards listed below.

This statement supersedes any statements previously issued pertaining to the product(s) listed below and is subject to change without notice.

Model No : 254VTDC6026

(Model No. may contain prefix and/or suffix characters)

Catalog No : V113A

Rework No : N/A

Directives :

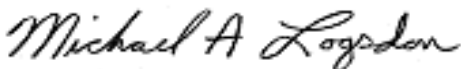
Low Voltage Directive 2014/35/EU

Harmonized Standards Used :

EN 60034-1: 2010 (IEC 60034-1: 2010)

EN 60034-5: 2001/A1:2007 (IEC 60034-5: 2000/A1:2006)

Authorized Representative:



Michael A. Logsdon
Vice President, Technology

Authorized Representative in the Community:



Julian Clark
Marketing Engineer

Created on 09/01/2022

CE 22