

PRODUCT INFORMATION PACKET

marathon®
Motors

Model No: 254VTDC6001

Catalog No: V115A

Vertical Pump Motor, 20 & 15 HP, 3 Ph, 60 & 50 Hz, 230/460 & 190/380 V, 3600 & 3000 RPM,
254TPV Frame, WPI



Regal and Marathon are trademarks of Regal Rexnord Corporation or one of its affiliated companies.

©2023 Regal Rexnord Corporation, All Rights Reserved. MC017097E

RegalRexnord

Nameplate Specifications

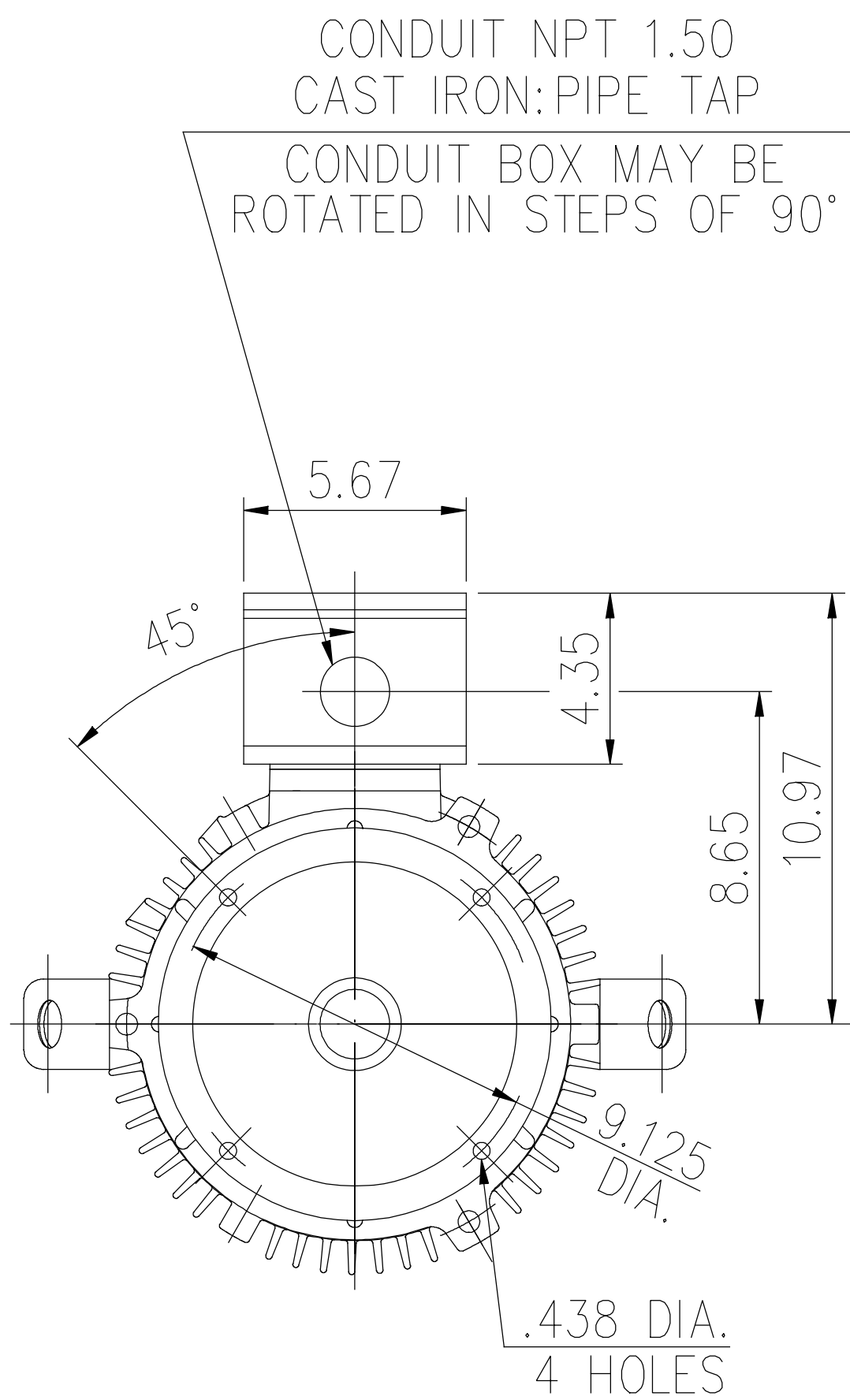
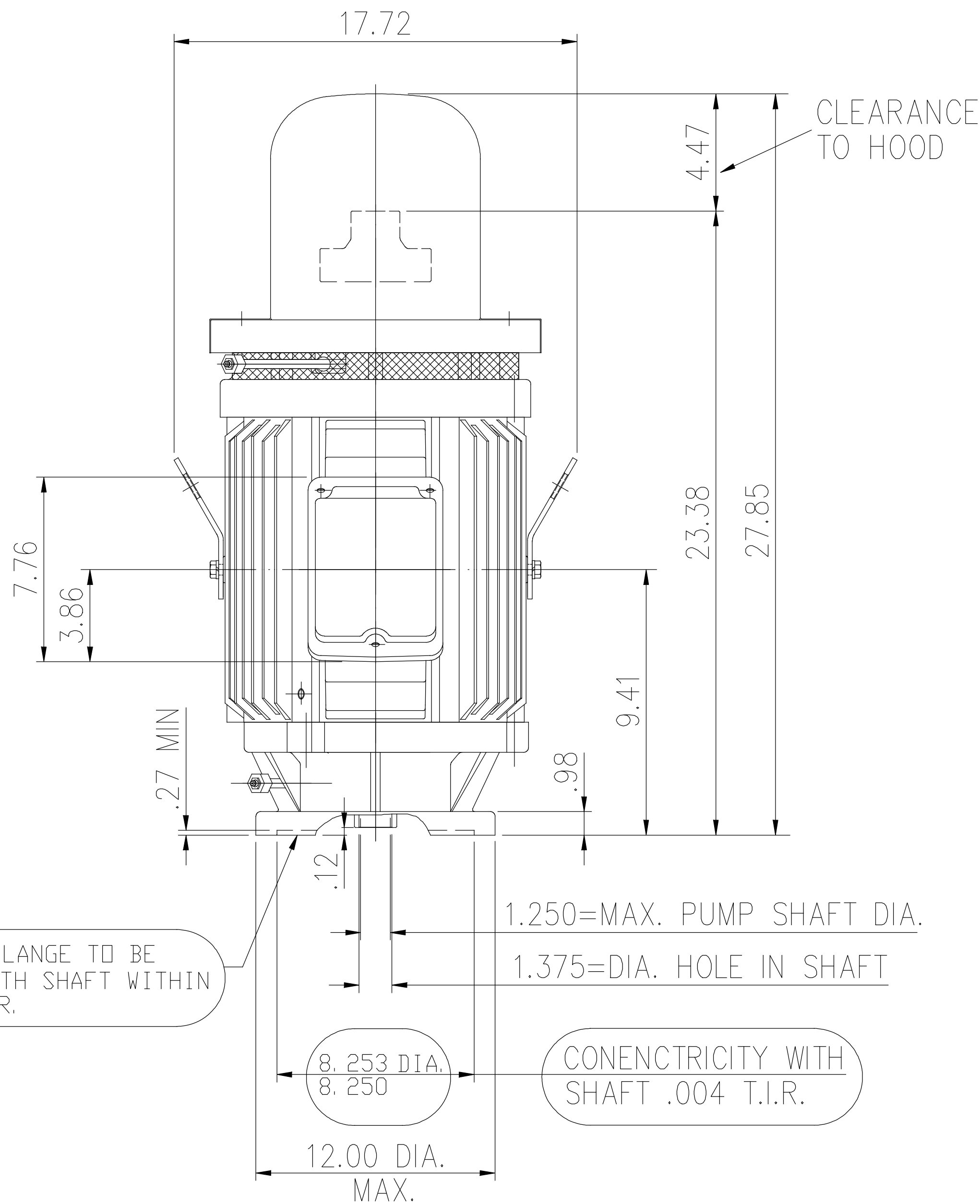
Phase	3	Output HP	20 & 15 Hp
Output KW	14.9 & 11.2 kW	Voltage	230/460 & 190/380 V
Speed	3530 & 2940 rpm	Service Factor	1.15 & 1.15
Frame	254TPV	Enclosure	Weather Protected 1
Thermal Protection	No Protection	Efficiency	91 & 89.5 %
Ambient Temperature	40 °C	Frequency	60 & 50 Hz
Current	47.5/23.7 & 44/22.1 A	Power Factor	87
Duty	Continuous	Insulation Class	F
Design Code	B	KVA Code	G
Drive End Bearing Size	6309	Opp Drive End Bearing Size	7311B
UL	Recognized	CSA	Y
CE	Y	IP Code	23
Number of Speeds	1		

Technical Specifications

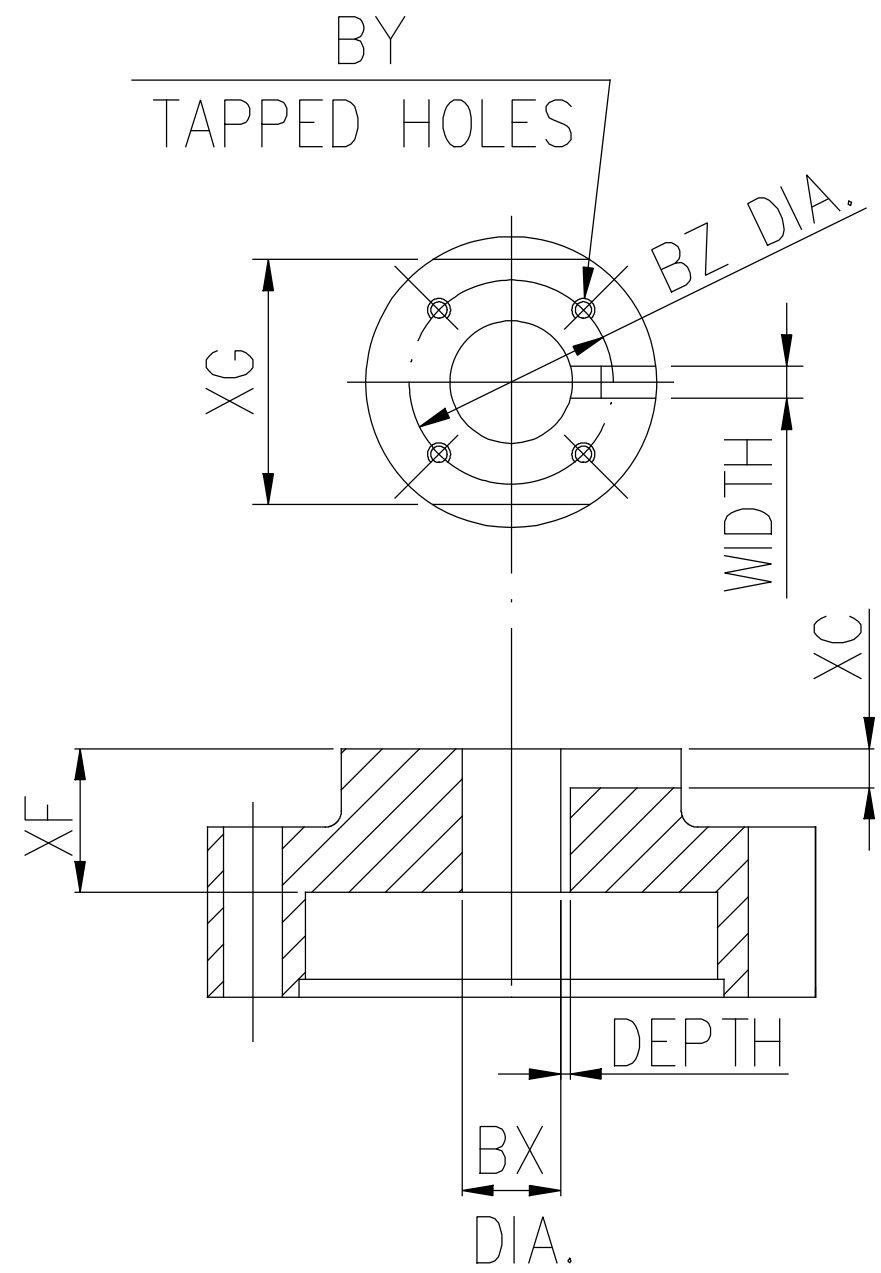
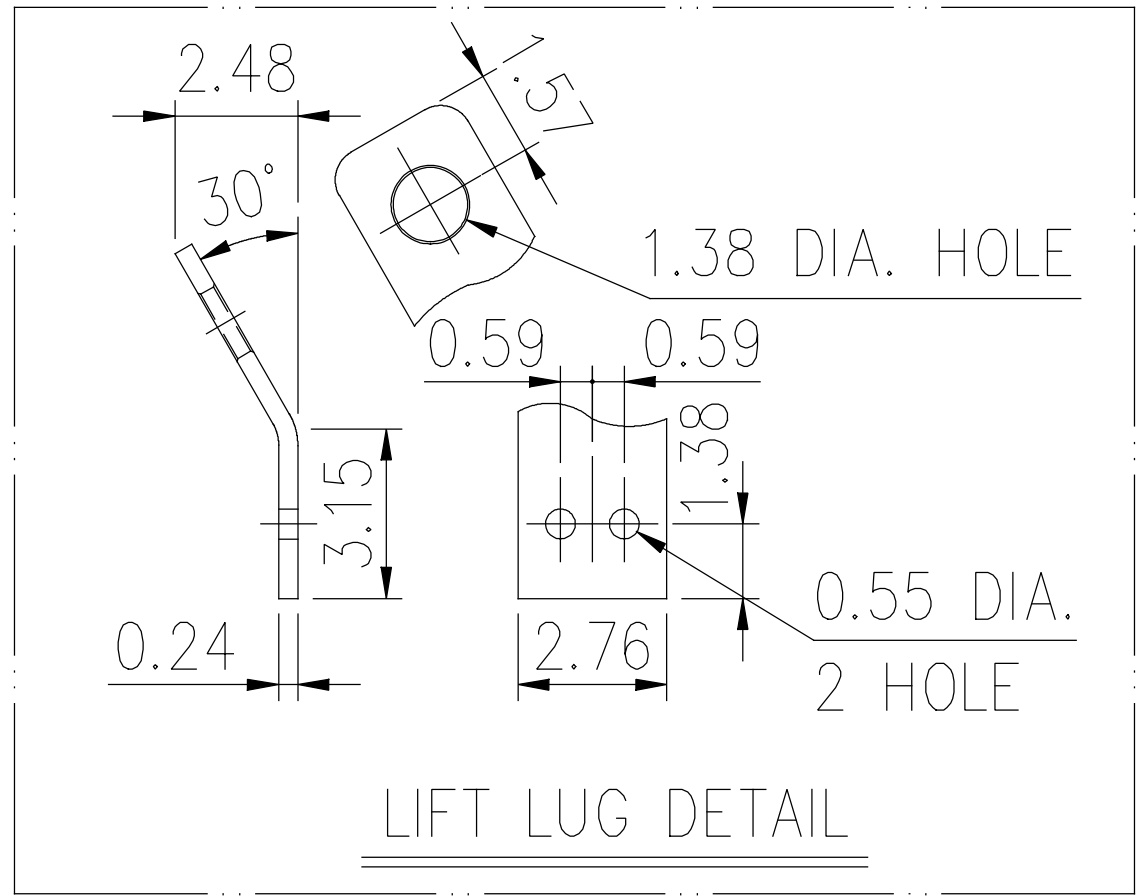
Electrical Type	Squirrel Cage Inverter Rated	Starting Method	Part Wdg Start Low Volt Only & Wye Start Delta Run Or Inverter
Poles	2	Rotation	Counterclockwise Rotation, Reversible without Non-Reversible Ratchet
Mounting	Round	Motor Orientation	Shaft Down
Drive End Bearing	Ball	Opp Drive End Bearing	Single Angular Contact
Frame Material	Cast Iron	Shaft Type	TP
Overall Length	27.85 in	Shaft Diameter	1.375 in
Shaft Extension	0.12 in	Assembly/Box Mounting	F1/F2 CAPABLE
Inverter Load	VARIABLE 3:1		
Outline Drawing	SS620835	Connection Drawing	EE7308DX

COUPLING	BX DIA.	KEYWAY		BY	BZ	XF	XC
		WIDE	DEEP				
	1.001	0.250	0.140	10-32UNF	1.375	1.650	0.430
	1.188	0.250	0.140	1/4-20UNC	1.750	1.650	0.430
	1.251	0.250	0.140	1/4-20UNC	1.750	1.650	0.430
	0.751	N/A	N/A	N/A	N/A	N/A	N/A

SS620835



BOTTOM VIEW OF MOTOR



COUPLING

- (1) DIMENSIONS ARE IN INCHES.
(2) DRIVE END BEARING 6309
OPPOSITE DRIVE END BEARING 7311B
(3) APPROXIMATE WEIGHT = 370 LBS

(4) END OF LINE TESTS - SPECIFIC TO EACH RATING

- *NO LOAD AMPS @ FULL VOLTAGE
- *NO LOAD WATTS @ FULL VOLTAGE
- *VIBRATION MEETS MG-1 STANDARD
- BALANCE 0.15 IN/S 3.8 MM/S

				TOLERANCES UNLESS SPECIFIED		<div><div>REGAL</div>REGAL - BELOIT CORPORATION</div>			DRAWN		
				DEC.	INCHES				CHK		
				.X	±.1				APPD		
				.XX	±.03	TITLE OUTLINE 254/256TP12 FRAME			SCALE		
B	UPDATED PER MARK--UPS	ECO--0151417	WGJ 9-7-2018	AL .XXX	±.005				REF		
A	RELEASED FOR PRODUCTION	ECO--0125213	WGJ 6-13-2017	AL .XXXX	±.0005	MAT'L.			FMF		
NO.	REVISION		BY & DATE	CHK	ANG	±7'30"	FINISH			PREV	
THIS DRAWING IN DESIGN AND DETAIL IS OUR PROPERTY AND MUST NOT BE USED EXCEPT IN CONNECTION WITH OUR WORK ALL RIGHTS OF DESIGN AND INVENTION ARE RESERVED THIS IS AN ELECTRONICALLY GENERATED DOCUMENT - DO NOT SCALE THIS PRINT				RFP		CAD FILE		SIZE	DRAWING NO.		REV.
				DIST				B	SS620835		B

T12 (W4) —
T1 (U1) —
T6 (W2) — L1
T7 (U3) —

T2 (V1) —
T4 (U2) —
T8 (V3) — L2
T10 (U4) —

T3 (W1) —
T5 (V2) —
T9 (W3) — L3
T11 (V4) —

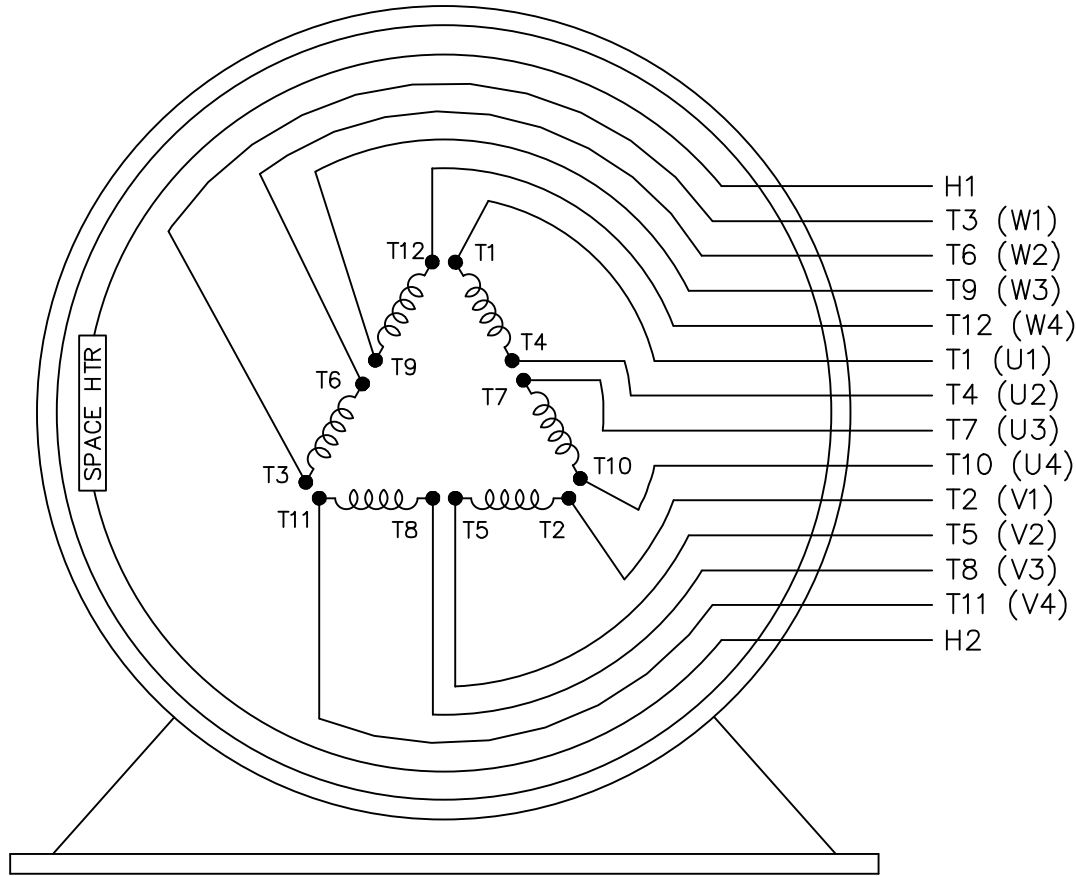
LOW VOLTAGE

T12 (W4) —
T1 (U1) — L1
T4 (U2) —
T7 (U3) —


T2 (V1) —
T10 (U4) — L2
T5 (V2) —
T8 (V3) —

T3 (W1) —
T11 (V4) — L3
T6 (W2) —
T9 (W3) —

HIGH VOLTAGE



VIEW OF TERMINAL END

					TOLERANCES UNLESS SPECIFIED			DRAWN KL 02-05-1999	
					DEC.	INCHES		CHK DJK 02-05-1999	
					.X	± -		APPD DJK 02-05-1999	
					.XX	± -		SCALE 1=1	
2	ADDED IEC MARKINGS	MU110339	MSG 10-15-2012	SJW .XXX	± -		TITLE CONNECTION DIAGRAM		REF
1	NEW DRAWING	MU23624	KL 02-05-1999	DJK .XXXX	± -		12 LEADS - 3 PHASE - 2/1 DELTA		FMF MU23624
NO.	REVISION	BY & DATE	CHK ANG	± -			FINISH		PREV
THIS DRAWING IN DESIGN AND DETAIL IS OUR PROPERTY AND MUST NOT BE USED EXCEPT IN CONNECTION WITH OUR WORK ALL RIGHTS OF DESIGN AND INVENTION ARE RESERVED THIS IS AN ELECTRONICALLY GENERATED DOCUMENT - DO NOT SCALE THIS PRINT				RFP	02-05-1999	CAD FILE EE7308DX		SIZE A	DRAWING NO. EE7308DX
				DIST				PAGE OF	REV. 2

CERTIFICATION DATA SHEET

**P.O. BOX 8003
WAUSAU, WI 54401-8003
PH. 715-675-3311**

CONN. DIAGRAM: EE7308DX

MODEL #: 254VTDC6001 AA

OUTLINE: SS620835

MOUNTING: F1/F2 CAPABLE

WINDING #: TPE2542001 1

TYPICAL MOTOR PERFORMANCE DATA

HP	kW	SYNC. RPM	F.L. RPM	FRAME	ENCLOSURE	KVA CODE	DESIGN
20&15	14.9&11.2	3600	3530&2940	254TPV	WPI	G	B

PH	Hz	VOLTS	AMPS	START TYPE	DUTY	INSL	S.F.	AMB° C
3	60/50	230/460&190/380	47.5/23.7&44/22.1	PWS (LV ONLY) & YDRUN OR INV	CONTINUOUS	F	1.15/1.15	40

FULL LOAD EFF:	91&89.5	3/4 LOAD EFF:	91	1/2 LOAD EFF:	89.5	GTD. EFF		ELEC. TYPE
FULL LOAD PF:	87&86	3/4 LOAD PF:	87.5	1/2 LOAD PF:	83.5	90.2		SQ CAGE INV RATED

F.L. TORQUE	LOCKED ROTOR AMPS	L.R. TORQUE	B.D. TORQUE	F.L. RISE°C
30 LB-FT	290 / 145	61 LB-FT 200 %	90 LB-FT 300 %	40

SOUND PRESSURE @ 3 FT.	SOUND POWER	ROTOR WK^2	MAX. WK^2	SAFE STALL TIME	STARTS / HOUR	APPROX. MOTOR WGT
75 dBA	85 dBA	1.2 LB-FT^2	67 LB-FT^2	12 SEC.	1	335 LBS.

***** SUPPLEMENTAL INFORMATION *****

DE BRACKET TYPE	ODE BRACKET TYPE	MOUNT TYPE	ORIENTATION	SEVERE DUTY	HAZARDOUS LOCATION	DRIP COVER	SCREENS	PAINT
P-BASE-12	STANDARD	ROUND	SHAFT DOWN	FALSE	NONE	TRUE	RODENT	BLUE (ENAMEL)

BEARINGS		GREASE	SHAFT TYPE	SPECIAL DE	SPECIAL ODE	SHAFT MATERIAL	FRAME MATERIAL
DE	ODE						
BALL	SINGLE ANGULAR CONTACT	POLYREX EM	TP	NONE	NONE	1045 HOT ROLLED (C-204)	CAST IRON
6309	7311B						

THERMO-PROTECTORS				THERMISTORS	CONTROL	SPACE HEATERS
THERMOSTATS	PROTECTORS	WDG RTDs	BRG RTDs			
NONE	NOT	NONE	NONE	NONE	FALSE	110 VOLTS

*

N

O

T

E

S

INVERTER TORQUE: VARIABLE 3:1

INV. HP SPEED RANGE: NONE

ENCODER: NONE

NONE NONE

NONE NONE PPR

BRAKE: NONE NONE

NONE P/N NONE

NONE NONE

NONE FT-LB NONE V NONE Hz

MARATHON ELECTRIC CORPORATION

TYPICAL PERFORMANCE CURVE for AC MOTOR

Customer

Curve at

460

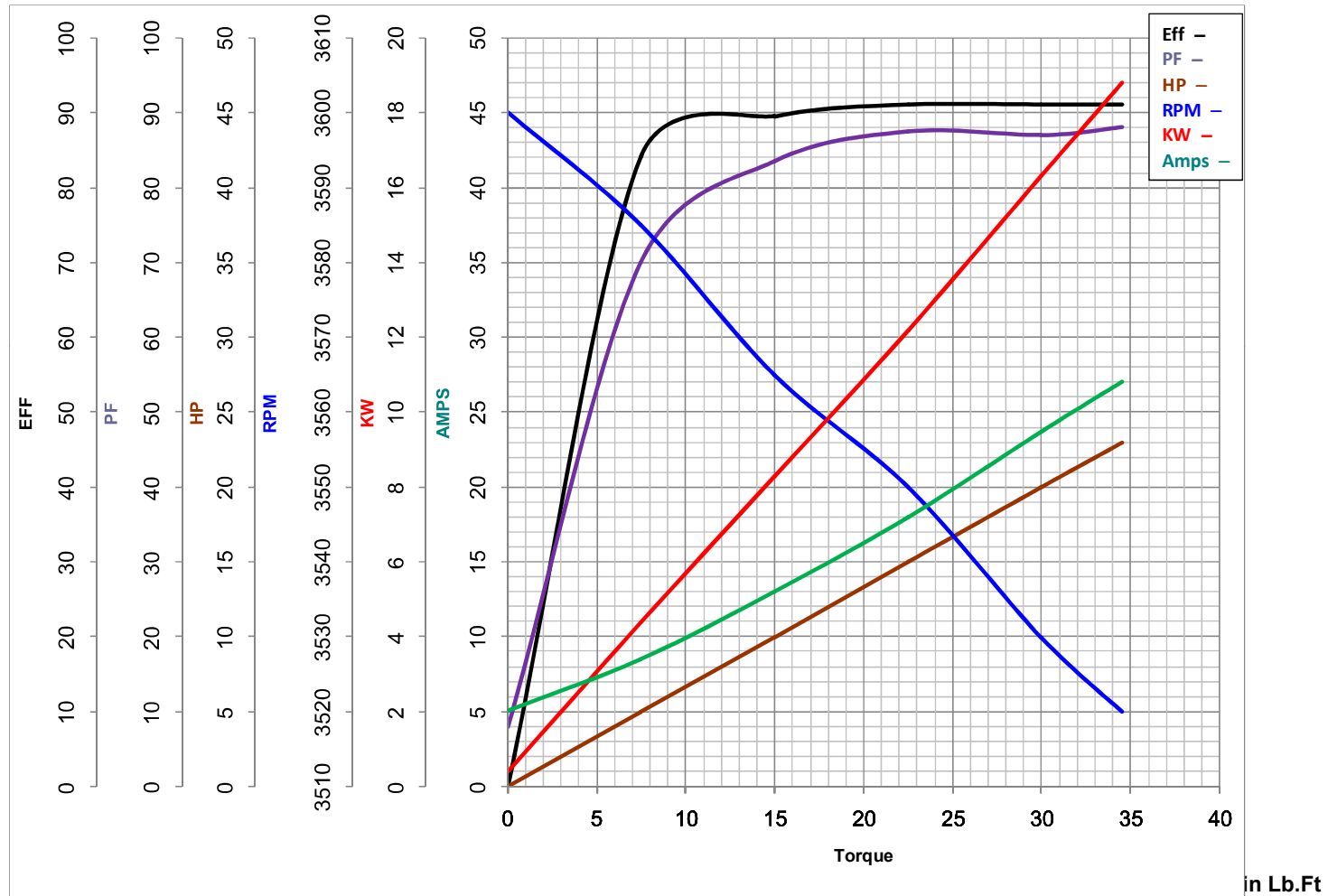
Volts

HP 20&15PHASE 3Model No 254VTDC600160

HZ

VOLTS 230/460&190/38020

HP

HZ 60&50RPM 3530&2940Catalog No V115AFL TORQUE 30 Lb.FtBD TORQUE 90.0 Lb.FtLR TORQUE 61 Lb.FtFL AMPS 47.5/23.7PU TORQUE 52.0 Lb.FtLR AMPS 145

WINDING TPE2542001-1

Date 11/5/2018