

PRODUCT INFORMATION PACKET

Model No: 254UTFNA4076

Catalog No: P429

Automotive Duty Motor, 5 HP, 3 Ph, 60 Hz, 460 V, 1200 RPM, 254U Frame, TEFC



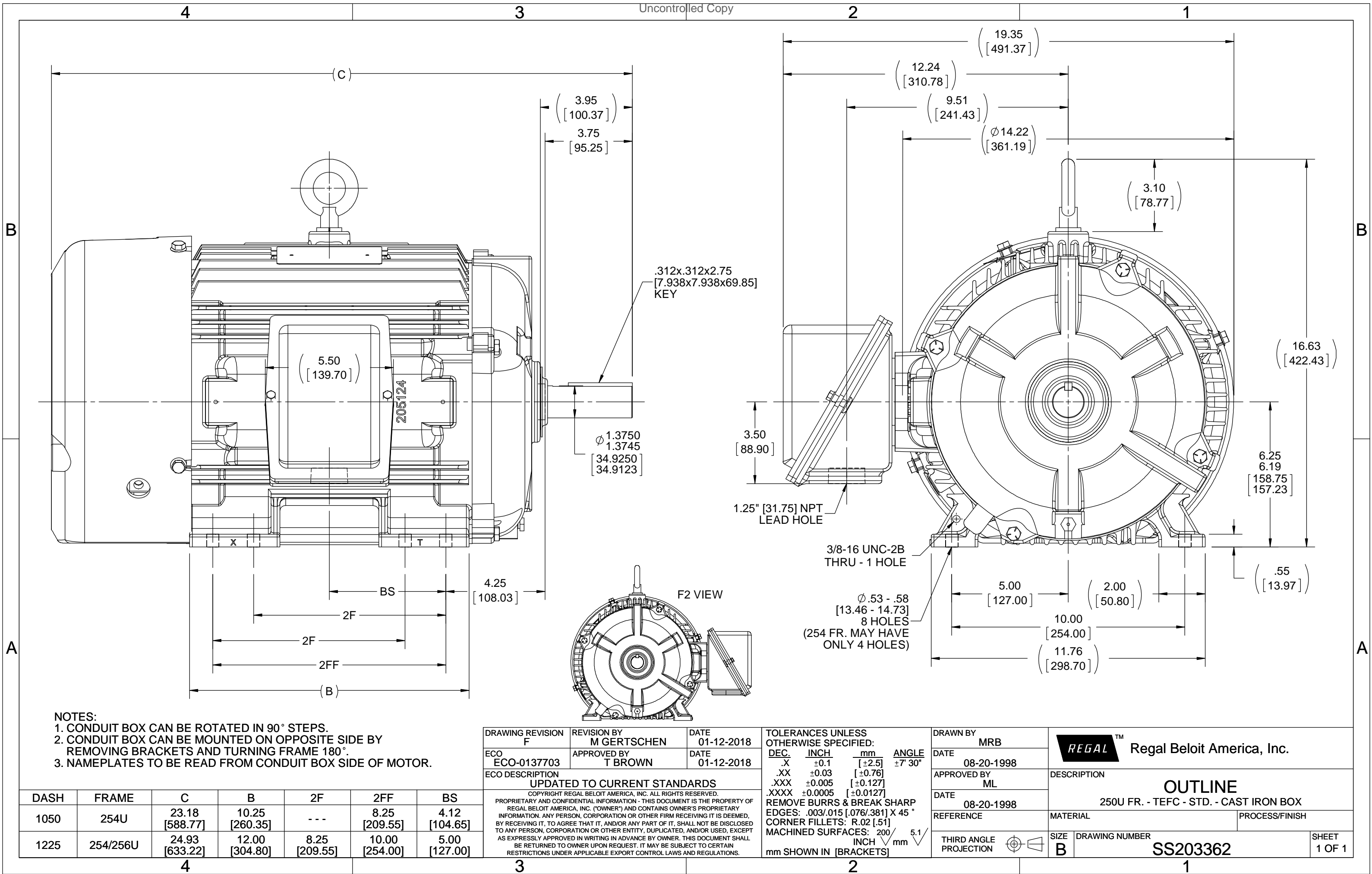
Regal and are trademarks of Regal Rexnord Corporation or one of its affiliated companies.
©2022 Regal Rexnord Corporation, All Rights Reserved. MC017097E

Nameplate Specifications

Output HP	5 Hp	Output KW	3.7 kW
Frequency	60 Hz	Voltage	460 V
Current	6.7 A	Speed	1175 rpm
Service Factor	1	Phase	3
Efficiency	90.2 %	Power Factor	76
Duty	Continuous	Insulation Class	F
Design Code	B	KVA Code	H
Frame	254U	Enclosure	Totally Enclosed Fan Cooled
Thermal Protection	No Protection	Ambient Temperature	65 °C
Drive End Bearing Size	6309	Opp Drive End Bearing Size	6210
UL	Recognized	CSA	Y
CE	Y	IP Code	43
Number of Speeds	1		

Technical Specifications

Electrical Type	Squirrel Cage Induction Run	Starting Method	Across The Line
Poles	6	Rotation	Reversible
Resistance Main	1.92 Ohms	Mounting	Rigid Base
Motor Orientation	Horizontal	Drive End Bearing	Ball
Opp Drive End Bearing	Ball	Frame Material	Cast Iron
Shaft Type	U	Overall Length	23.27 in
Frame Length	10.50 in	Shaft Diameter	1.375 in
Shaft Extension	3.94 in	Assembly/Box Mounting	F1/F2 Capable
Outline Drawing	B-SS203362-1050	Connection Drawing	A-EE7300



THREE PHASE - SINGLE VOLTAGE
MOTOR - CONDUIT BOX @ 'A'

TO REVERSE ROTATION:
INTERCHANGE ANY TWO LINE
LEAD CONNECTIONS

TERMINAL BLOCK WHEN SPECIFIED

IF MOTOR HAS 9 LEADS

T1(U1) T1(U1) T1(U1) → L1

T2(V1) T2(V1) T2(V1) → L2

T3(W1) T3(W1) T3(W1) → L3

IF MOTOR HAS 6 LEADS

T1(U1) T1(U1) → L1

T2(V1) T2(V1) → L2

T3(W1) T3(W1) → L3

A-9806 DECAL



OPTIONAL CORD CONNECTION	
L1	WHITE
L2	RED
L3	BLACK

DRAWING REVISION AC	REVISION BY BS	REV DATE/© DATE 26/07/2022
REQUEST NUMBER CR-0010402	APPROVED BY SN	DATE 26/07/2022
REQUEST NUMBER DESCRIPTION DRAWING UPDATED		
COPYRIGHT (PER REVISION DATE) REGAL BELOIT AMERICA, INC. ALL RIGHTS RESERVED. PROPRIETARY AND CONFIDENTIAL INFORMATION - THIS DOCUMENT IS THE PROPERTY OF REGAL BELOIT AMERICA, INC. ("OWNER") AND CONTAINS OWNER'S PROPRIETARY INFORMATION. ANY PERSON, CORPORATION OR OTHER FIRM RECEIVING IT IS DEEMED, BY RECEIVING IT, TO AGREE THAT IT, AND/OR ANY PART OF IT, SHALL NOT BE DISCLOSED TO ANY PERSON, CORPORATION OR OTHER ENTITY, DUPLICATED, AND/OR USED, EXCEPT AS EXPRESSLY APPROVED IN WRITING IN ADVANCE BY OWNER. THIS DOCUMENT SHALL BE RETURNED TO OWNER UPON REQUEST. IT MAY BE SUBJECT TO CERTAIN RESTRICTIONS UNDER APPLICABLE EXPORT CONTROL LAWS AND REGULATIONS.		

PRIMARY DIMENSIONS ARE INCH
mm DIMENSIONS IN [BRACKETS]
ARE FOR REFERENCE ONLY

DRAWN BY DA
DATE 03-26-1993
APPROVED BY TB
DATE 03-26-1993
REFERENCE
THIRD ANGLE PROJECTION

Regal Beloit America, Inc.	
DESCRIPTION CONNECTION DIAGRAM EXTERNAL - SINGLE VOLTAGE - 3Ø MOTOR	
MATERIAL	PROCESS/FINISH
SIZE A	DRAWING NUMBER EE7300
SHEET 1 OF 1	

CERTIFICATION DATA SHEET

Model#: 254UTFNA4076 AB
CONN. DIAGRAM: A-EE7300
OUTLINE: B-SS203362-1050

WINDING#: 254671 NONE 1
ASSEMBLY: F1/F2 CAPABLE

TYPICAL MOTOR PERFORMANCE DATA

HP	KW	SYNC. RPM	F.L. RPM	FRAME	ENCLOSURE	KVA CODE	DESIGN
5	3.7	1200	1175	254U	TEFC	H	B

PH	Hz	VOLTS	FL AMPS	START TYPE	DUTY	INSL	S.F	AMB°C	ELEVATION
3	60	460	6.7	ACROSS THE LINE	CONTINUOUS	F3	1.0	65	3300

FULL LOAD EFF: 90.2	3/4 LOAD EFF: 90.2	1/2 LOAD EFF: 88.5	GTD. EFF	ELEC. TYPE	NO LOAD AMPS
FULL LOAD PF: 76	3/4 LOAD PF: 70	1/2 LOAD PF: 57	88.5	SQ CAGE IND RUN	3.5

F.L. TORQUE	LOCKED ROTOR AMPS	L.R. TORQUE	B.D. TORQUE	F.L. RISE°C
22.4 LB-FT	46	48 LB-FT 214	69.5 LB-FT 310	35

SOUND PRESSURE @ 3 FT.	SOUND POWER	ROTOR WK^2	MAX. WK^2	SAFE STALL TIME	STARTS /HOUR	APPROX. MOTOR WGT
56 dBA	66 dBA	2.5 LB-FT^2	80 LB-FT^2	30 SEC.	2	350 LBS.

*** SUPPLEMENTAL INFORMATION ***

DE BRACKET TYPE	ODE BRACKET TYPE	MOUNT TYPE	ORIENTATION	SEVERE DUTY	HAZARDOUS LOCATION	DRIP COVER	SCREENS	PAINT
STANDARD	STANDARD	RIGID	HORIZONTAL	FALSE	NONE	FALSE	NONE	GRAY (ENAMEL)

BEARINGS		GREASE	SHAFT TYPE	SPECIAL DE	SPECIAL ODE	SHAFT MATERIAL	FRAME MATERIAL
DE	OPE						
BALL	BALL						
6309	6210	POLYREX EM	U	NONE	NONE	1045 HOT ROLLED (C-204)	CAST IRON

THERMO-PROTECTORS				THERMISTORS	CONTROL	SPACE /n HEATERS
THERMOSTATS	PROTECTORS	WDG RTDs	BRG RTDs			
NONE	NOT	NONE	NONE	NONE	FALSE	NONE VOLTS

If Inverter equals NONE, contact factory for further information

INVERTER TORQUE: NONE		
INV. HP SPEED RANGE: NONE		
ENCODER: NONE		
NONE NONE		
NONE NONE PPR		
BRAKE: NONE NONE		
NONE P/N NONE		
NONE NONE		
- FT-LB	NONE V	NONE Hz

*
N
O
T
E
S
*

DATE: 06/23/2017 04:37:50 AM
 FORM 3531 REV.3 02/07/99
 ** Subject to change without notice.

Data Sheet

Date: 6/29/2017

Customer: _____

Attention: _____

Submitted by: FAREEDA DUDEKULA



254UTFNA4076

Submittal

Data @ 460 V

Motor Load Data

Load	0%	25%	50%	75%	100%	115%	125%	LR	
Current (Amps)	3.5	3.8	4.5	5.5	6.7	7.6	8.1	46.0	
Torque (ft-lb)	0.00	5.5	11.0	16.8	22.4	25.8	28.0	48.0	
RPM	1200	1195	1188	1182	1175	1,172	1168	0	
Efficiency (%)		81.5	88.5	90.2	90.2	90.2	89.5		
P.F. (%)	7.0	37.0	57.0	70.0	76.0	78.0	80.0	42.0	

Motor Speed Data

	LR	Pull-Up	BD	Rated	Idle	Information Block				
Speed (RPM)	0	550	1025	1175	1200	HP	5.0			
Current (Amps)	46.0	43.0	27.5	6.7	3.5	Sync. RPM	1200			
Torque (ft-lb)	48.0	42.0	69.5	22.4	0.00	Frame	254			
<div><div>— Efficiency (%)</div><div>— P.F. (%)</div><div>— Current (Amps)</div><div>EFFICIENCY (%)</div><div>P.F. (%)</div><div>CURRENT (AMPS)</div><div>LOAD</div></div>						Enclosure	TEFC			
						Construction	TFN			
						Voltage	460	V		
						Frequency	60	Hz		
						Design	B			
						LR Code letter	H			
						Service Factor	1.15			
						Temp Rise @ FL	35	° C		
						Duty	CONT			
						Ambient	40	° C		
						Elevation	1,000	feet		
						Rotor/Shaft wk²	2.50	Lb-Ft²		
						Ref Wdg	254671	NONE		
						Sound Pressure @ 1M	56	dBA		
						VFD Rating	NONE			
						Outline Dwg	B-SS203362-1050			
						Conn. Diag	A-EE7300			
Additional Specifications:										
0										
0										
EQUIV CKT (OHMS / PHASE)										
R1	R2	X1	X2	Xm						
1.1280	0.8900	3.8780	3.8780	73.7100						

Speed -Torque Curve

