

# PRODUCT INFORMATION PACKET



Model No: 254TTGCD6505

Catalog No: C378

Hazardous Duty® Explosion Proof Motor, 15 & 10 HP, 3 Ph, 60 & 50 Hz, 230/460 & 190/380 V,  
3600 & 3000 RPM, 254TC Frame, EPFC

Regal and Marathon are trademarks of Regal Rexnord Corporation or one of its affiliated companies.

©2023 Regal Rexnord Corporation, All Rights Reserved. MC017097E

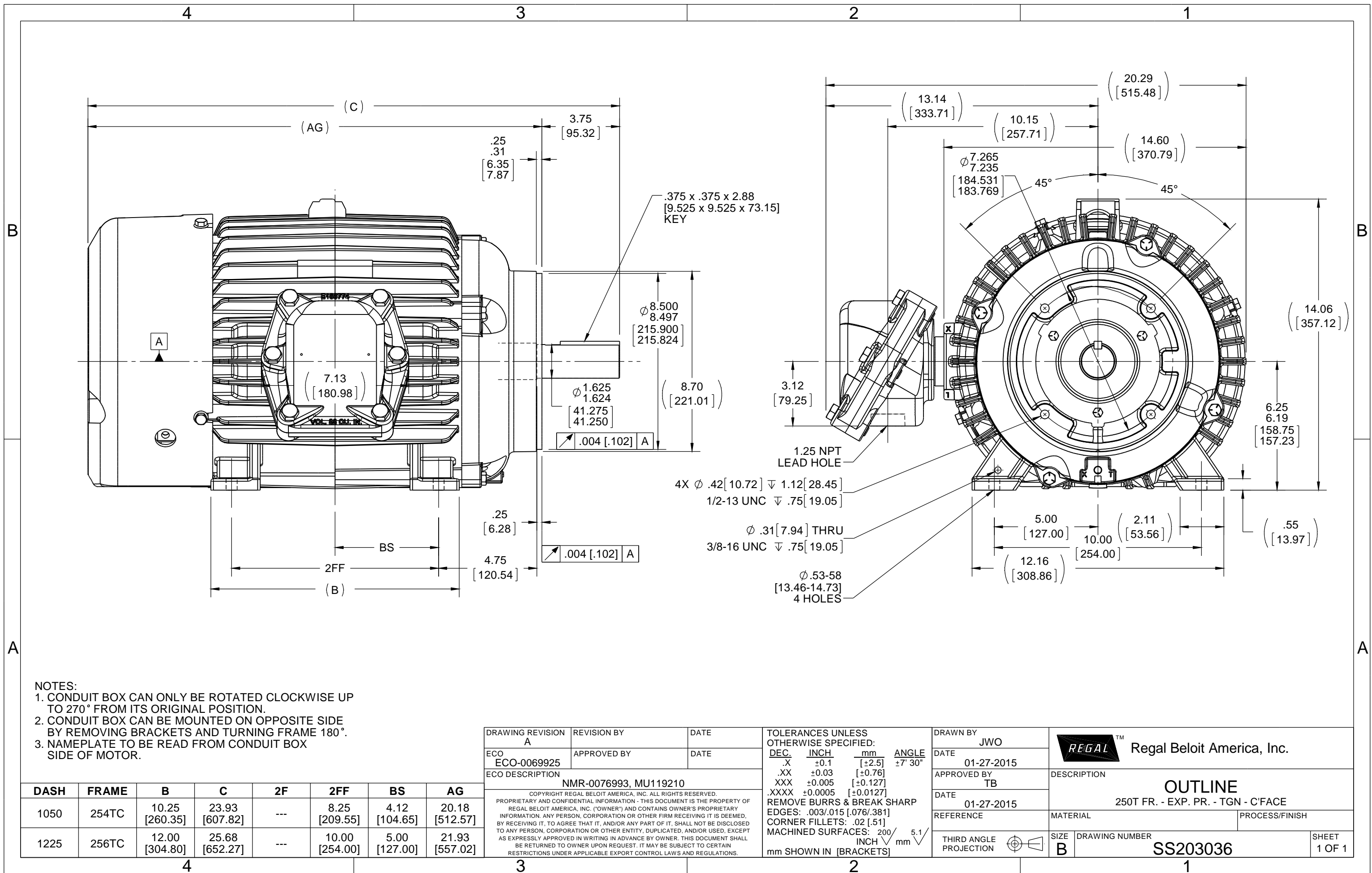


## Nameplate Specifications

Phase	3	Output HP	15 & 10 Hp
Output KW	11.2 & 7.5 kW	Voltage	230/460 & 190/380 V
Speed	3545 & 2955 rpm	Service Factor	1.0 & 1.0
Frame	254TC	Enclosure	Explosion Proof Fan cooled
Thermal Protection	Thermostat	Efficiency	91 & 90.2 %
Ambient Temperature	50 °C	Frequency	60 & 50 Hz
Current	35.5/17.8 & 29.6/14.8 A	Power Factor	87
Duty	Continuous	Insulation Class	F
Design Code	B	KVA Code	G
Drive End Bearing Size	6309	Opp Drive End Bearing Size	6210
UL	UL Listed And CSA Certified	CSA	Y
CE	N	IP Code	54
Number of Speeds	1	Hazardous Location	DIV 1 EXP PROOF CL I GR CD CL II GR FG T3C

## Technical Specifications

Electrical Type	Squirrel Cage Induction Run	Starting Method	Across The Line
Poles	2	Rotation	Reversible
Resistance Main	.691 Ohms	Mounting	Rigid Base
Motor Orientation	Horizontal	Drive End Bearing	Ball
Opp Drive End Bearing	Ball	Frame Material	Cast Iron
Shaft Type	T	Shaft Diameter	1.625 in
Assembly/Box Mounting	F1 ONLY		
Outline Drawing	SS203036-1050	Connection Drawing	EE7308T



## HIGH VOLTAGE

THREE PHASE  
DUAL VOLTAGE MOTOR

NOTE FOR FACTORY USE ONLY:  
TO SURGE TEST FOR COMMON CONNECT:  
HIGH VOLT: CONNECT P1 TO T1  
THEN P2 TO L1  
LOW VOLT: CONNECT P1 TO T1 & T7,  
THEN P2 TO L1

## LOW VOLTAGE



## VIEW OF TERMINAL END

NOTE: LEAD'S COLOR CAN BE YELLOW OR WHITE FOR MT2 PLANT

DRAWING REVISION T	REVISION BY ZR	DATE 01-14-2019
ECO ECO-0159915	APPROVED BY DR	DATE 01-15-2019

ECO DESCRIPTION  
ADDED TERMINAL CONNECTION DIAGRAM

COPYRIGHT REGAL BELOIT AMERICA, INC. ALL RIGHTS RESERVED.  
PROPRIETARY AND CONFIDENTIAL INFORMATION - THIS DOCUMENT IS THE PROPERTY OF  
REGAL BELOIT AMERICA, INC. ("OWNER") AND CONTAINS OWNER'S PROPRIETARY  
INFORMATION. ANY PERSON, CORPORATION OR OTHER FIRM RECEIVING IT IS DEEMED,  
BY RECEIVING IT, TO AGREE THAT IT, AND/OR ANY PART OF IT, SHALL NOT BE DISCLOSED  
TO ANY PERSON, CORPORATION OR OTHER ENTITY, DUPLICATED, AND/OR USED, EXCEPT  
AS EXPRESSLY APPROVED IN WRITING IN ADVANCE BY OWNER. THIS DOCUMENT SHALL  
BE RETURNED TO OWNER UPON REQUEST. IT MAY BE SUBJECT TO CERTAIN  
RESTRICTIONS UNDER APPLICABLE EXPORT CONTROL LAWS AND REGULATIONS.

DRAWN BY SMC
DATE 05-13-1992
APPROVED BY TB
DATE 05-13-1992
REFERENCE EE7308/EE7300

THIRD ANGLE  
PROJECTION

Regal Beloit America, Inc.

## DESCRIPTION

CONN DIAGRAM-INTERNAL  
3 PHASE - DUAL VOLTAGE MOTOR

MATERIAL

PROCESS/FINISH

SIZE  
A

DRAWING NUMBER

EE7308T

SHEET  
1 OF 1



P.O. BOX 8003  
WAUSAU, WI 54401-8003  
PH. 715-675-3311

DATA VOLTS: 460

### CERTIFICATION DATA SHEET

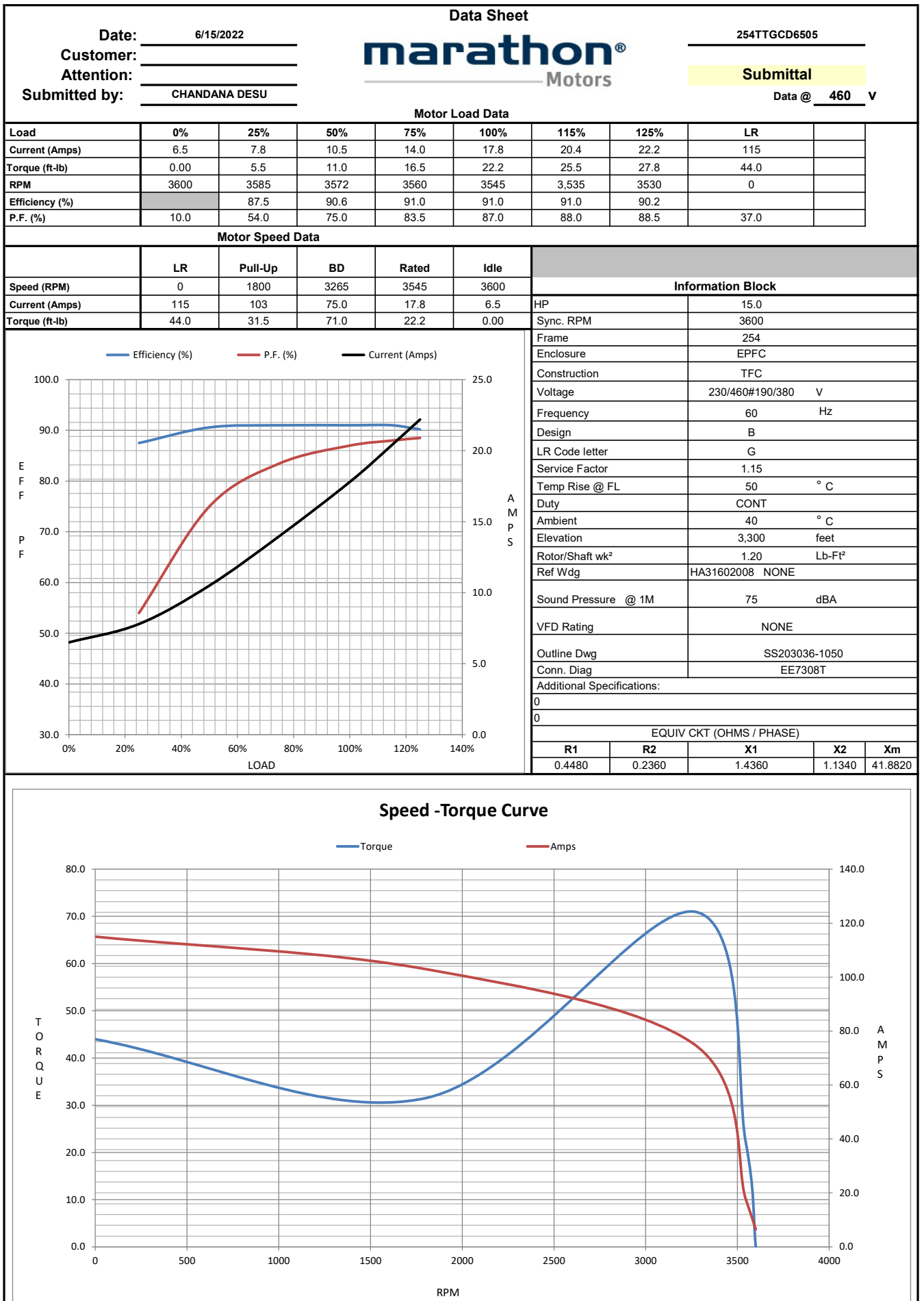
CUSTOMER:  
ORDER #:  
CONN. DIAGRAM: EE7308T  
OUTLINE: SS203036-1050  
WINDING: HA31602008 NONE 6  
SPEED:

CUSTOMER P.O. #:  
REFERENCE MODEL #: 254TTGCD6505  
CAT #: C378  
CUSTOMER PART #:  
MOUNTING: F1 ONLY

### TYPICAL MOTOR PERFORMANCE DATA

HP	KW	SYNC RPM	FL RPM	FRAME	ENCLOSURE	TYPE	KVA CODE	DESIGN	
15	11.2	3600	3545	254TC	EPFC	TFC	G	B	
PH	HZ	VOLTS	AMPS	START TYPE	DUTY	INSL	S.F.	AMB	ELEV.
3	60/50	230/460#190/380	35.5/17.8&29.6/14.8	ACROSS THE LINE	CONT	F	1.15	50	3300
F.L. EFF		91.0	3/4 LD EFF	91.0	1/2 LD EFF	90.6	GTD EFF	ELECT. TYPE	
F.L. PF		87.0	3/4 LD PF	83.5	1/2 LD PF	75.0	90.2	SQ CAGE IND RUN	
F.L. TORQUE		LR AMPS @ 460 V		L.R. TORQUE		B.D. TORQUE		F.L. RISE (°C)	
22.2	LB-FT	115		44.0	LB-FT	198%	71.0	LB-FT	320%
SOUND PRESSURE @ 3 FT.		SOUND	POWER	ROTOR WK²	MAX. LOAD WK²	SAFE STALL TIME	STARTS/HOUR	APPROX.	MOTOR WGT
75	dBA	84	dBA	1.20	LB-FT²	22	LB-FT²	20	SEC.
*** SUPPLEMENTAL INFORMATION ***									
DE BRACKET TYPE		ODE BRACKET TYPE		MOUNT TYPE	MOTOR ORIENTATION	SEVERE DUTY	HAZARDOUS LOCATION	DRIIP COVER	SCREENS
C-FACE		STANDARD		RIGID	HORIZONTAL	PREMIUM SEVERE DUTY	PROOF CL I GR CD CL II	NO	NONE
BEARINGS		GREASE		SHAFT TYPE		SPECIAL DE		SPECIAL ODE	
DE		ODE		POLYREX EM		T		NONE	
BALL		BALL		NONE		NONE		1045 HOT ROLLED (C-204)	
6309		6210		CAST IRON					
THERMOSTATS		PROTECTORS		WDG RTD's		BRG RTD's		THERMISTORS	
TSTATS (N/C)		NOT		NONE		NONE		NONE	
R1 (ohms/ph)		R2 (ohms/ph)		X1 (ohms/ph)		X2 (ohms/ph)		Xm (ohms/ph)	
0.448		0.236		1.436		1.134		41.882	
VIBRATION (in/sec)		FLOAT							
0.080		ODE							
* N O T E S *		INVERTER TORQUE: NONE INV. HP SPEED RANGE: NONE							
		ENCODER: NONE NONE NONE							
		BRAKE: NONE NONE NONE							
		FT-LB: NA VOLTAGE: NONE							
		H2:							
PREPARED BY: CHANDANA DESU DATE: 6/15/2022		UL: NO LETTER - ALL BRANDS-UL LISTED AND CSA CERTIFIED DIV. 1 XP MOTORS							

FORM: 3531 REV. 4 2/27/06



# CERTIFICATE OF COMPLIANCE

**Certificate Number** 20220311- E12044  
**Report Reference** E12044-19950413  
**Issue Date** 2022-MARCH-11

**Issued to:** REGAL BELOIT AMERICA INC  
1946 W COOK RD  
FORT WAYNE IN 46818

Tradename: Marathon

**This certificate confirms that  
representative samples of**

MOTORS FOR USE IN HAZARDOUS LOCATIONS

Electric motors for use in hazardous locations; Class I, Groups C and D; Class II, Groups F and G; Inclusive of Model Number 254TTGCD6505 (may have prefix and/or suffix characters).

Have been investigated by UL in accordance with the Standard(s) indicated on this Certificate.

**Standard(s) for Safety:**

UL 674 - Electric Motors and Generators for Use in Division 1 Hazardous (Classified) Locations,  
CSA C22.2 No. 145, Electric Motors and Generators for Use in Hazardous (Classified) Locations

**Additional Information:**

See the UL Online Certifications Directory at <https://iq.ulprospector.com> for additional information.

This *Certificate of Compliance* does not provide authorization to apply the UL Mark. Only the UL Follow-Up Services Procedure provides authorization to apply the UL Mark.

Only those products bearing the UL Mark should be considered as being UL Certified and covered under UL's Follow-Up Services.

Look for the UL Certification Mark on the product.

This is to certify that representative samples of the product as specified on this certificate were tested according to the current UL requirements.



Bruce Mahrenholz, Director North American Certification Program  
UL LLC

Any information and documentation involving UL Mark services are provided on behalf of UL LLC (UL) or any authorized licensee of UL. For questions, please contact a local UL Customer Service Representative at <http://ul.com/aboutul/locations/>

