

PRODUCT INFORMATION PACKET

marathon®
Motors

Model No: 254TTGCD16549
Catalog No: E503A-P
15,1800,EPFC,254T,3/60/230/460

Regal and Marathon are trademarks of Regal Rexnord Corporation or one of its affiliated companies.
©2023 Regal Rexnord Corporation, All Rights Reserved. MC017097E

The logo for Regal Rexnord, featuring a stylized 'R' icon followed by the text 'RegalRexnord'.




Nameplate Specifications

Technical Specifications

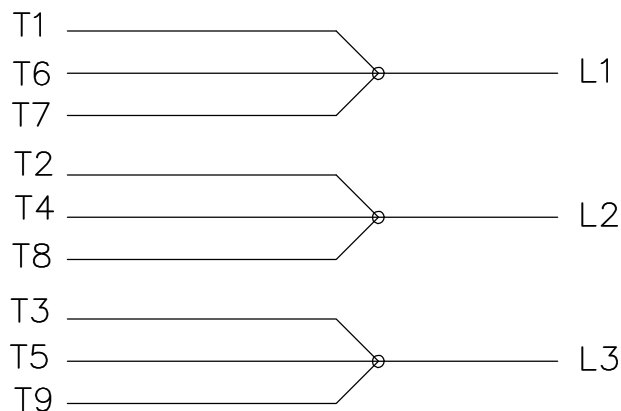
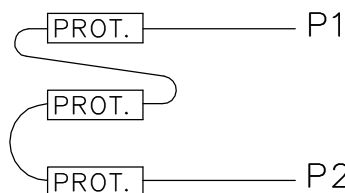
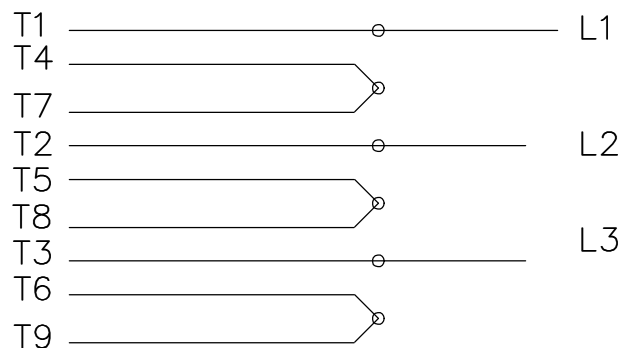
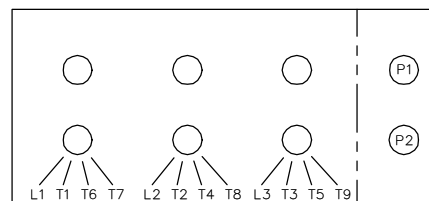
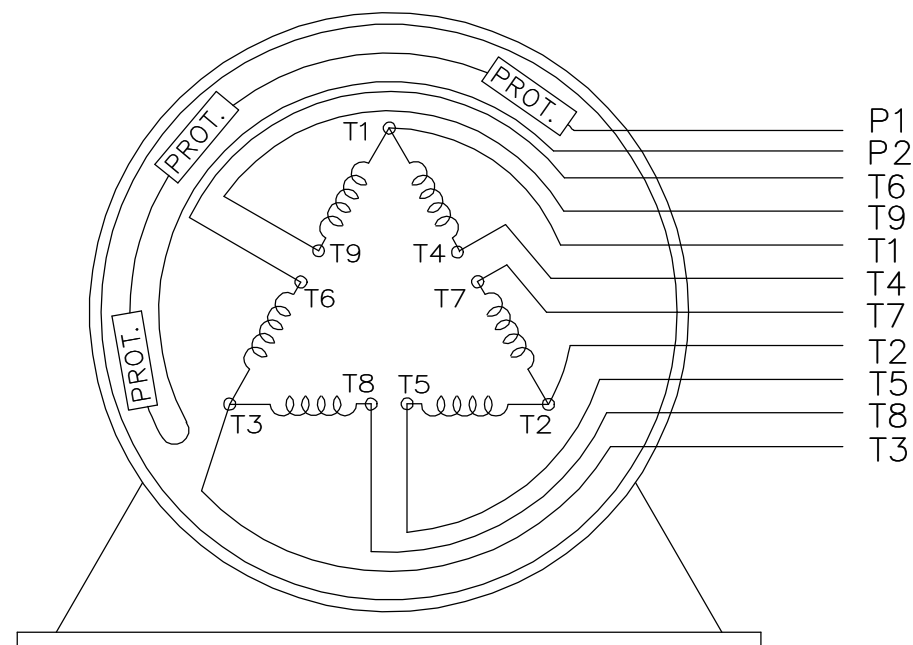
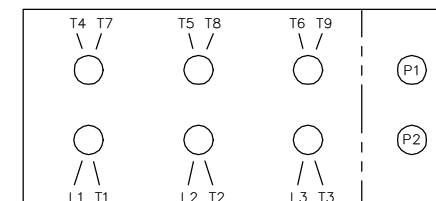
Connection Drawing	EE7308AD	Outline Drawing	SS203001-1050
--------------------	----------	-----------------	---------------

This is an uncontrolled document once printed or downloaded and is subject to change without notice. Date Created:01/19/2023




 Regal Beloit America, Inc.	
DESCRIPTION <div style="text-align: center;"> <h1>OUTLINE</h1> <h2>250T FR. EXP. PR. - BB - T - STD.</h2> </div>	
MATERIAL	PROCESS/FINISH
SIZE B	DRAWING NUMBER <div style="text-align: center;"> <h1>SS203001</h1> </div>
SHEET 1 OF 1	

DASH	FRAME	B	C	2F	2FF	BS
1050	254T	10.25 [260.35]	23.65 [600.71]	---	8.25 [209.55]	4.12 [104.65]
1225	256T	12.00 [304.80]	25.40 [645.16]	---	10.00 [254.00]	5.00 [127.00]

LOW VOLTAGEHIGH VOLTAGELOW VOLTAGEHIGH VOLTAGEVIEW OF TERMINAL END

WHEN MORE THAN ONE PROT. IS USED; PROT. ARE CONNECTED IN SERIES

DRAWING REVISION L	REVISION BY JP	REV DATE/© DATE 06-21-2019	TOLERANCES (EXCEPT AS NOTED):				DRAWN BY MJD	 Regal Beloit America, Inc.		
ECO ECO-0168744	APPROVED BY MH	DATE 06-21-2019	DEC. .X	INCH ±0.1	mm [±3]	ANGLE ±7° 30'	DATE 12-19-1997			
ECO DESCRIPTION UPDATED TO CURRENT STANDARDS			.XX	±0.02	[±0.5]		APPROVED BY GK	CONN DIAGRAM-EXTERNAL		
COPYRIGHT (PER REVISION DATE) REGAL BELOIT AMERICA, INC. ALL RIGHTS RESERVED. PROPRIETARY AND CONFIDENTIAL INFORMATION - THIS DOCUMENT IS THE PROPERTY OF REGAL BELOIT AMERICA, INC. ("OWNER") AND CONTAINS OWNER'S PROPRIETARY INFORMATION. ANY PERSON, CORPORATION OR OTHER FIRM RECEIVING IT IS DEEMED, BY RECEIVING IT, TO AGREE THAT IT, AND/OR ANY PART OF IT, SHALL NOT BE DISCLOSED TO ANY PERSON, CORPORATION OR OTHER ENTITY, DUPLICATED, AND/OR USED, EXCEPT AS EXPRESSLY APPROVED IN WRITING IN ADVANCE BY OWNER. THIS DOCUMENT SHALL BE RETURNED TO OWNER UPON REQUEST. IT MAY BE SUBJECT TO CERTAIN RESTRICTIONS UNDER APPLICABLE EXPORT CONTROL LAWS AND REGULATIONS.			.XXX	±0.005	[±0.13]		DATE 01-07-1998			
			.XXXX	±0.0005	[±0.013]		REFERENCE	MATERIAL		PROCESS/FINISH
			REMOVE BURRS & BREAK SHARP EDGES: .003/.015 [.08/.38] X 45°				THIRD ANGLE PROJECTION	SIZE A	DRAWING NUMBER EE7308AD	SHEET 1 OF 1