

# PRODUCT INFORMATION PACKET



Model No: 254TTGCD16524  
Catalog No: C307C  
15,3600,EPFC,254TC,3/60/230/460

Regal and Marathon are trademarks of Regal Rexnord Corporation or one of its affiliated companies.  
©2023 Regal Rexnord Corporation, All Rights Reserved. MC017097E





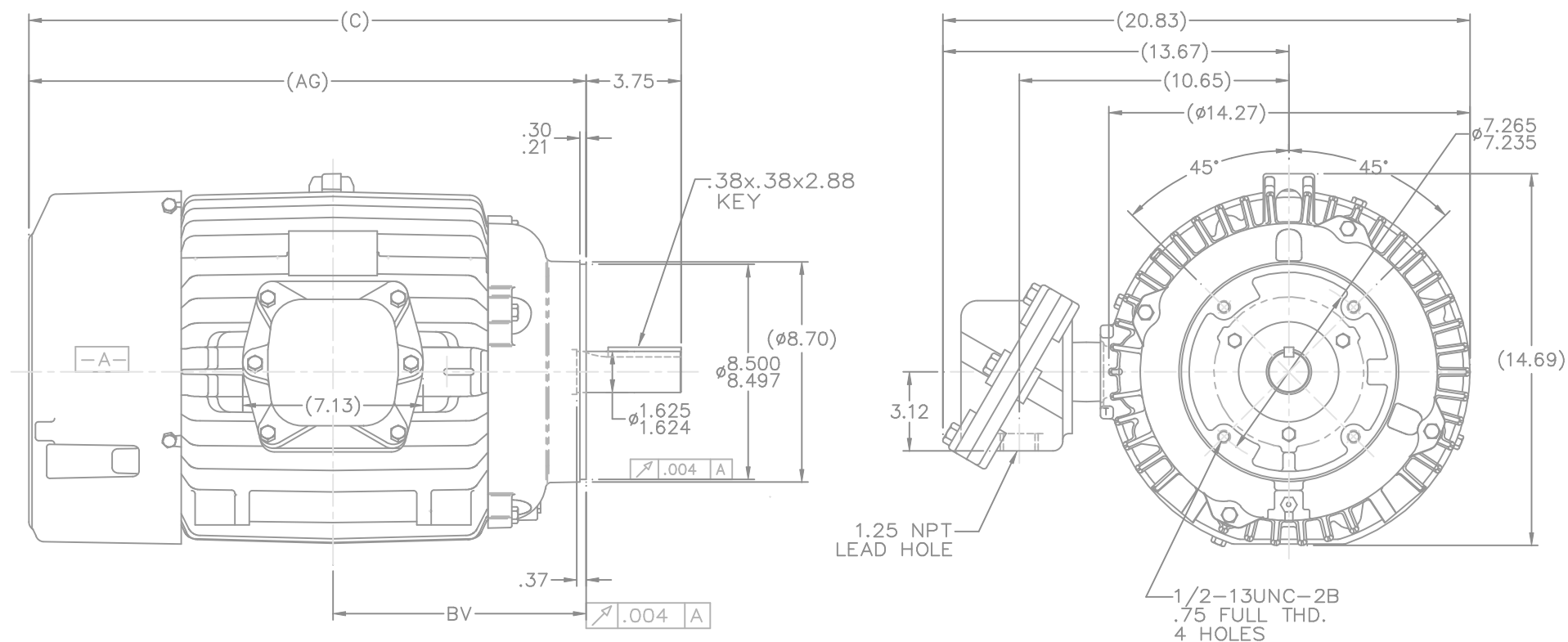
**Nameplate Specifications**

**Technical Specifications**

Connection Drawing	A-EE7308T	Outline Drawing	SS207446-1225
--------------------	-----------	-----------------	---------------

---


**This is an uncontrolled document once printed or downloaded and is subject to change without notice. Date Created:01/19/2023**

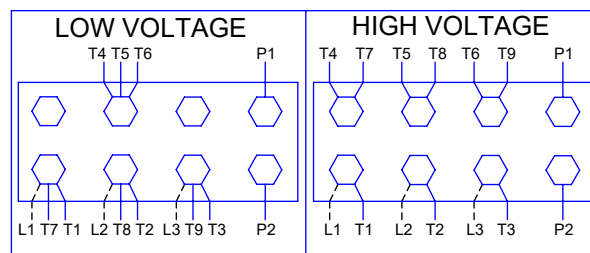


NOTES:

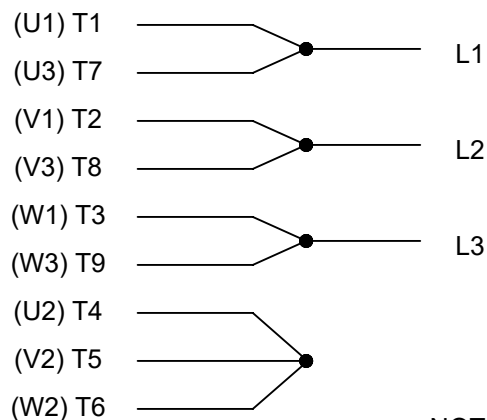
1. BOX CAN BE ROTATED CLOCKWISE UP TO 270° FROM ITS ORIGINAL POSITION.
2. NAMEPLATE TO BE READ FROM CONDUIT BOX SIDE OF MOTOR

DASH	FRAME	C	AG	BV	
1225	254-6TC	25.77	22.02	10.00	

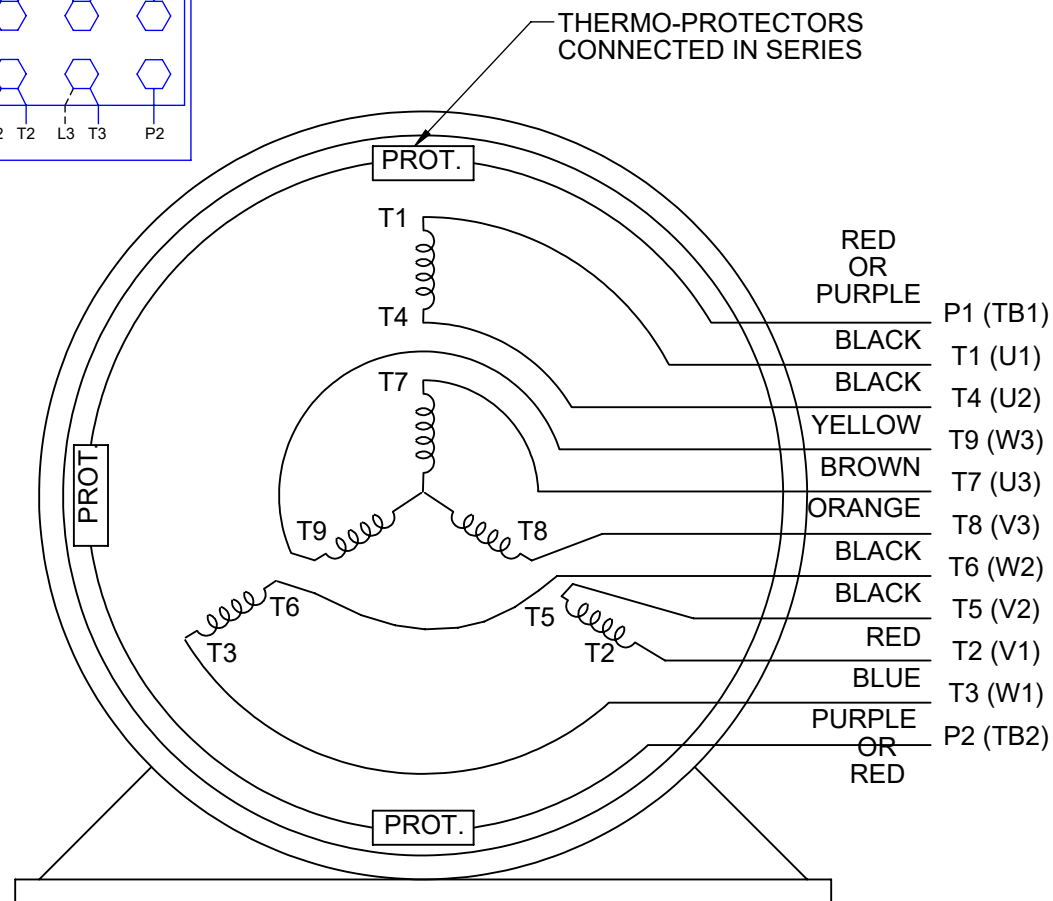
						TOLERANCES UNLESS SPECIFIED		DRAWN MH 02-05-1998				
						DEC. INCHES		CHK ML 02-06-1998				
						.X ±.1		APPD TB 02-06-1998				
						.XX ±.03		SCALE 1=4				
2	REDRAWN IN AUTOCAD	RWR 09-27-2004				.XXX ±.005		TITLE OUTLINE 254-6TC FR. -EXP. PR. - 'C' FACE	REF			
1	NEW DRAWING MU18309	MH 02-06-1998	ML			.XXXX ±.0005		MAT'L	FMF			
NO.	REVISION	BY & DATE	CHK	ANG ±7°30"	FINISH			PREV				
THIS DRAWING IN DESIGN AND DETAIL IS OUR PROPERTY AND MUST NOT BE USED EXCEPT IN CONNECTION WITH OUR WORK. ALL RIGHTS OF DESIGN AND INVENTION ARE RESERVED. CON IS AN ELECTRONICALLY GENERATED DOCUMENT. IT DOES NOT SUPERSEDE THE ORIGINAL PAPER COPY.								RFP 02-06-1998	CAD FILE ss207446	SIZE B	DRAWING NO. PAGE 1 OF 1	REV 2
								DIST LR			SS207446	



LOW VOLTAGE



## THREE PHASE DUAL VOLTAGE MOTOR



VIEW OF TERMINAL END

NOTE: LEAD'S COLOR CAN BE YELLOW OR WHITE FOR MT2 PLANT

DRAWING REVISION T		REVISION BY ZR		DATE 01-14-2019		<div></div>		DRAWN BY SMC		<div><div>REGAL<sup>TM</sup></div><div>Regal Beloit America, Inc.</div></div>					
ECO ECO-0159915		APPROVED BY DR		DATE 01-15-2019				DATE 05-13-1992		DESCRIPTION <div>CONN DIAGRAM-INTERNAL</div> <div>3 PHASE - DUAL VOLTAGE MOTOR</div>					
ECO DESCRIPTION <div>ADDED TERMINAL CONNECTION DIAGRAM</div> <div>COPYRIGHT REGAL BELOIT AMERICA, INC. ALL RIGHTS RESERVED. PROPRIETARY AND CONFIDENTIAL INFORMATION - THIS DOCUMENT IS THE PROPERTY OF REGAL BELOIT AMERICA, INC. ("OWNER") AND CONTAINS OWNER'S PROPRIETARY INFORMATION. ANY PERSON, CORPORATION OR OTHER FIRM RECEIVING IT IS DEEMED, BY RECEIVING IT, TO AGREE THAT IT, AND/OR ANY PART OF IT, SHALL NOT BE DISCLOSED TO ANY PERSON, CORPORATION OR OTHER ENTITY, DUPLICATED, AND/OR USED, EXCEPT AS EXPRESSLY APPROVED IN WRITING IN ADVANCE BY OWNER. THIS DOCUMENT SHALL BE RETURNED TO OWNER UPON REQUEST. IT MAY BE SUBJECT TO CERTAIN RESTRICTIONS UNDER APPLICABLE EXPORT CONTROL LAWS AND REGULATIONS.</div>								APPROVED BY TB						MATERIAL <div></div> PROCESS/FINISH <div></div>	
								DATE 05-13-1992							
								REFERENCE EE7308/EE7300		SIZE A		DRAWING NUMBER EE7308T		SHEET 1 OF 1	
						THIRD ANGLE PROJECTION		<div></div>							