

PRODUCT INFORMATION PACKET



Model No: 254TTFL4031

Catalog No: U348

Close-Coupled Pump Motor, 15 & 10 HP, 3 Ph, 60 & 50 Hz, 230/460 & 190/380 V, 1800 & 1500 RPM,
254JM Frame, TEFC

Regal and Marathon are trademarks of Regal Rexnord Corporation or one of its affiliated companies.

©2023 Regal Rexnord Corporation, All Rights Reserved. MC017097E

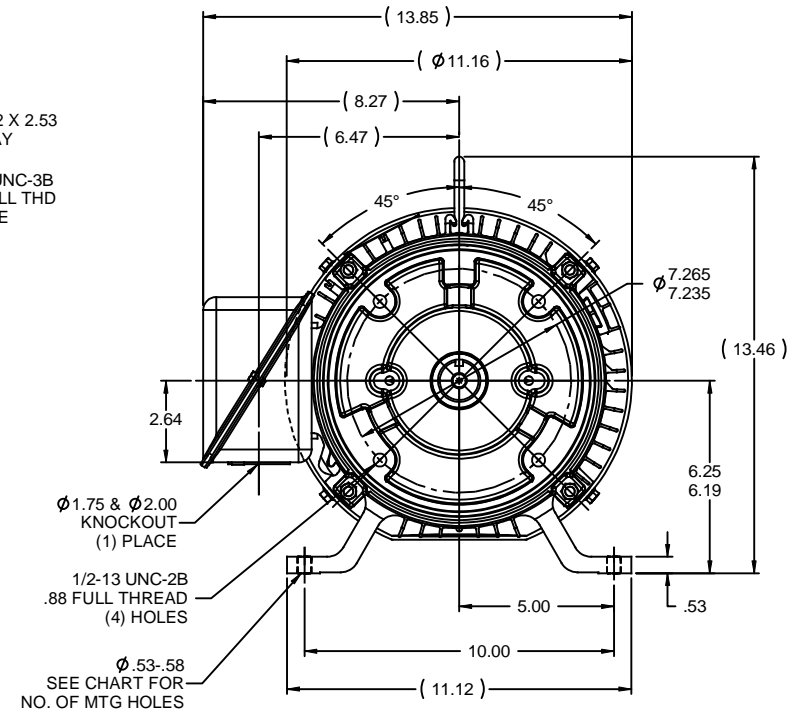
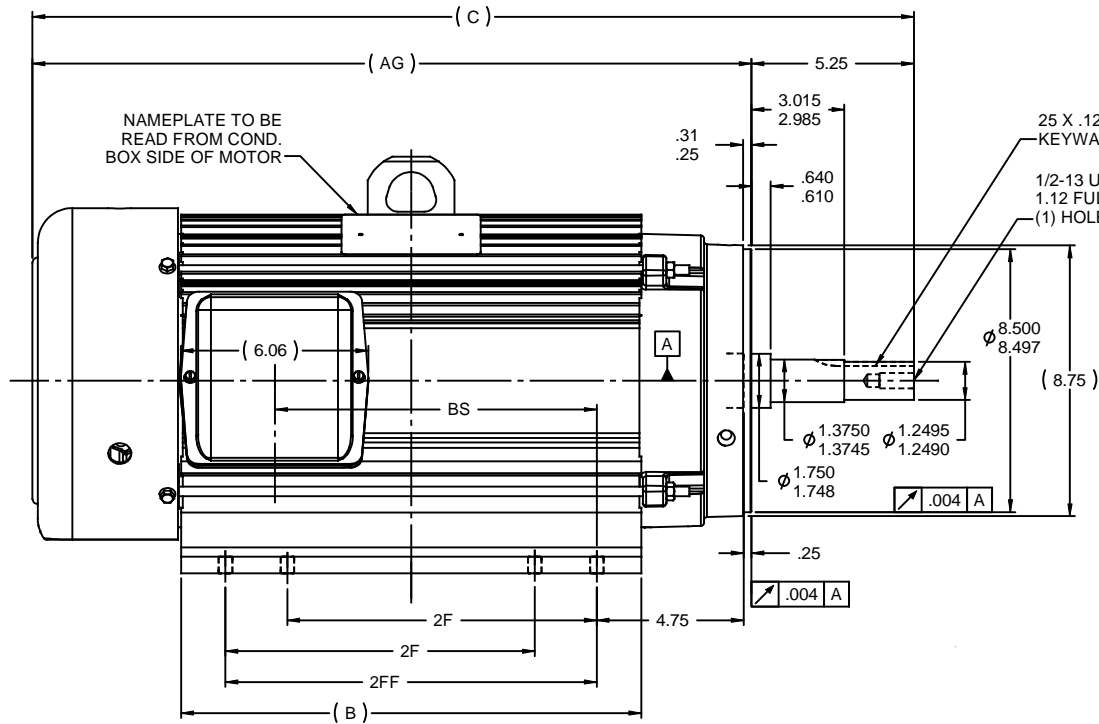


Nameplate Specifications

Phase	3	Output HP	15 & 10 Hp
Output KW	11.2 & 7.5 kW	Voltage	230/460 & 190/380 V
Speed	1750 & 1465 rpm	Service Factor	1.15 & 1.15
Frame	254JM	Enclosure	Totally Enclosed Fan Cooled
Thermal Protection	No Protection	Efficiency	91 & 91.7 %
Ambient Temperature	40 °C	Frequency	60 & 50 Hz
Current	40/20 & 33/16.5 A	Power Factor	78
Duty	Continuous	Insulation Class	F
Design Code	B	KVA Code	G
Drive End Bearing Size	6309	Opp Drive End Bearing Size	6207
UL	Recognized	CSA	Y
CE	Y	IP Code	43
Number of Speeds	1		

Technical Specifications

Electrical Type	Squirrel Cage Induction Run	Starting Method	Across The Line
Poles	4	Rotation	Reversible
Resistance Main	.757 Ohms	Mounting	Rigid Base
Motor Orientation	Horizontal	Drive End Bearing	Ball
Opp Drive End Bearing	Ball	Frame Material	Aluminum
Shaft Type	JM	Overall Length	24.74 in
Frame Length	11.00 in	Shaft Diameter	1.250 in
Shaft Extension	5.28 in	Assembly/Box Mounting	F1/F2 Capable
Connection Drawing	A-EE7308	Outline Drawing	B-SS330112-1100



DASH	FR.	C	B	2F	2FF	AG	BS	F1/F2	NO. OF MTG HOLES
1100	254	24.74	11.12	8.25	---	19.49	6.65	YES	4
1150	254	25.24	11.67	8.25	---	19.99	7.15	NO	4
1275	254/6	26.49	12.87	8.25	10.00	21.24	8.40	YES	8
1275A	256	26.49	12.87	10.00	---	21.24	8.40	YES	4
1325	254	26.99	13.37	8.25	10.50	21.74	8.90	YES	8
1325A	256	26.99	13.37	10.00	---	21.74	8.90	NO	4
1475	256	28.49	14.87	10.00	---	23.24	10.40	YES	8

NOTES:

- 1) BOX CAN BE ROTATED IN 180° STEPS
- 2) SEE CHART FOR F2 CAPABILITY. IF YES: BOX CAN BE MOUNTED ON OPPOSITE SIDE BY REMOVING BRACKETS AND TURNING FRAME 180°
- 3) NAMEPLATE TO BE READ FROM CONDUIT BOX SIDE OF MOTOR

				TOLERANCES UNLESS SPECIFIED	MARATHON ELECTRIC		DRAWN DRS 02-27-2006
				DEC INCHES			CHK ML 02-27-2006
3	CLARIFIED DASH 1275 & 1325 MTG HOLES	CN09-3560	TJW 9/18/2009	CTO X ±.1			APPR BW 02-27-2006
2	REVISE THE DASH 1275 & 1325 ON CHART		RWR 12-26-2007	ML XX ±.03	TITLE OUTLINE - C'FACE		SCALE 1:4
1	RE-ISSUE - ADD 4/8 MTG. HOLES TO CHART AND			XXX ±.005	210 FR. - 254/256 MTG - AL FRAME - TEFC		REF SS84286
	RE-POSITION VIEWS SO TEXT CAN BE READ EASILY		RWR 07-11-2007	ML XXXX ±.0005	MATL		FMF
NO	REVISION		BY & DATE	CHK ANG ±7'30"	FINISH		PREV
THIS DRAWING IN DESIGN AND DETAIL IS OUR PROPERTY AND MUST NOT BE USED EXCEPT IN CONNECTION WITH OUR WORK. ALL RIGHTS OF DESIGN AND INVENTION ARE RESERVED. THIS IS AN ELECTRONICALLY GENERATED DOCUMENT - DO NOT SCALE THIS PRINT				RFP 02-27-2006	CAD FILE SS330112		SIZE B
				DIST LB			DRAWING NO SS330112
							REV 3



				TOLERANCES UNLESS SPECIFIED		 Regal Beloit America, Inc.	DRAWN RM	11/20/1990
5	CHG TO REGAL LOGO	SL 09/10/2015	AB	DEC.	INCHES		CHK ML	11/21/1990
4	REVISED IEC NOTATIONS	MSG 11/15/2011	CMN	.X	±.1		APPD SAS	04/24/2003
3	ADDED IEC NOTATIONS... (U1), (V1) ETC. MU95194	MSG 5/10/2010	MJS	.XX	±.02		SCALE	1=1
2	ADDED THE OPTIONAL CORD CONNECTION MU46318	RDH 04/24/2003	DRS	.XXX	±.005	TITLE CONNECTION DIAGRAM 3ø – DUAL VOLTAGE MOTOR		REF
1	REDRAWN	RM 11/20/1990		.XXXX	±.0005	MAT'L.		FMF
NO.	REVISION	BY & DATE	CHK	ANG	±7"30"	FINISH		PREV
THIS DRAWING IN DESIGN AND DETAIL IS OUR PROPERTY AND MUST NOT BE USED EXCEPT IN CONNECTION WITH OUR WORK ALL RIGHTS OF DESIGN AND INVENTION ARE RESERVED THIS IS AN ELECTRONICALLY GENERATED DOCUMENT – DO NOT SCALE THIS PRINT			RFP		CAD FILE ee7308		SIZE	DRAWING NO. PAGE OF REV.
			DIST WP				A	EE7308

THIS DRAWING IN DESIGN AND DETAIL IS OUR PROPERTY AND MUST NOT BE USED EXCEPT
IN CONNECTION WITH OUR WORK ALL RIGHTS OF DESIGN AND INVENTION ARE RESERVED
THIS IS AN ELECTRONICALLY GENERATED DOCUMENT - DO NOT SCALE THIS PRINT