

PRODUCT INFORMATION PACKET

marathon®
Motors

Model No: 254TTFCA6092

Catalog No: GT3217

7.50 HP Close-Coupled Pump Motor, 3 phase, 1200 RPM, 575 V, 254JMV Frame, TEFC
Close-Coupled Pump Motors



Regal and Marathon are trademarks of Regal Rexnord Corporation or one of its affiliated companies.
©2021 Regal Rexnord Corporation, All Rights Reserved. MC017097E

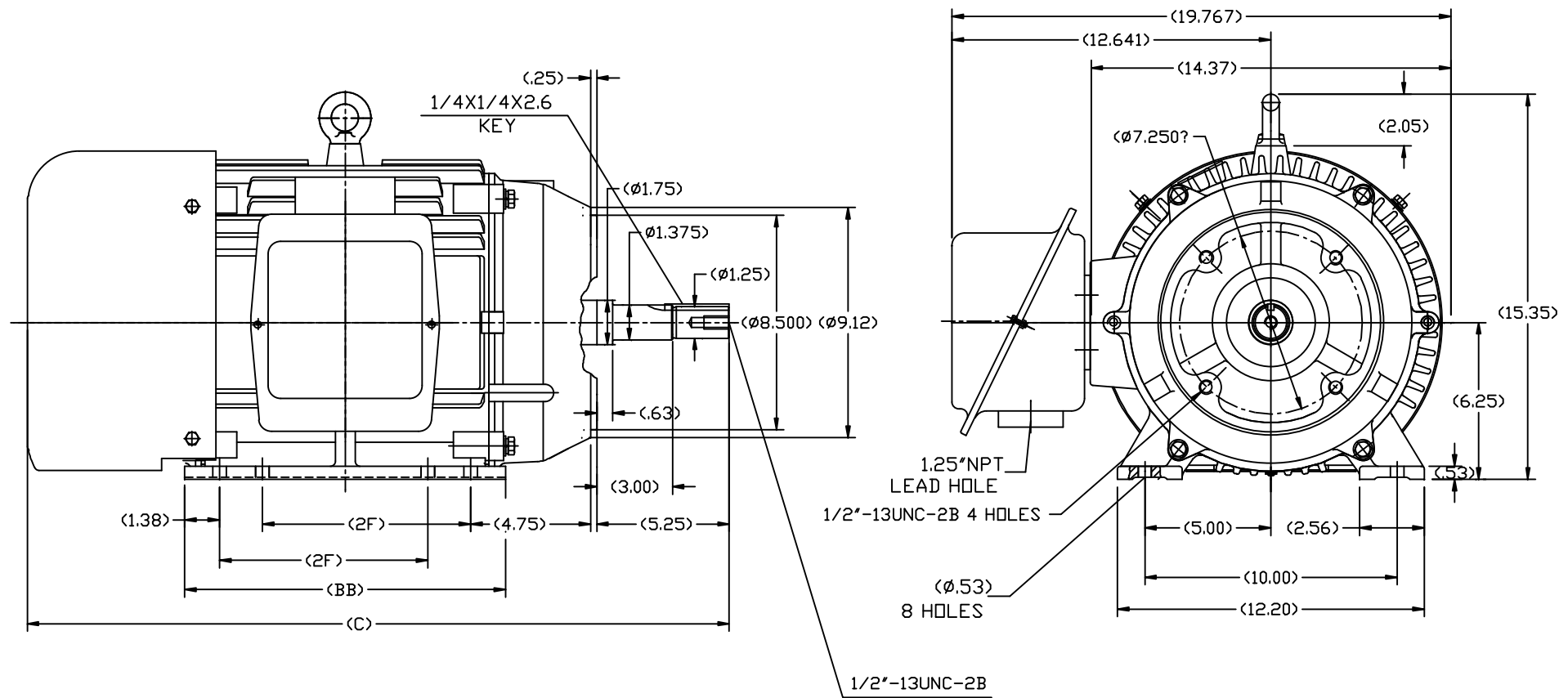
RegalRexnord

Nameplate Specifications

Output HP	7.50 Hp	Output KW	5.6 kW
Frequency	60 Hz	Voltage	575 V
Current	8.4 A	Speed	1182 rpm
Service Factor	1.15	Phase	3
Efficiency	91 %	Power Factor	74
Duty	Continuous	Insulation Class	F
Design Code	B	KVA Code	G
Frame	254JMV	Enclosure	Totally Enclosed Fan Cooled
Thermal Protection	No	Ambient Temperature	40 °C
Drive End Bearing Size	6309	Opp Drive End Bearing Size	6209
UL	Recognized	CSA	Y
CE	Y	IP Code	43
Number of Speeds	1		

Technical Specifications

Electrical Type	Squirrel Cage Inverter Rated	Starting Method	Line Or Inverter
Poles	6	Rotation	Reversible
Resistance Main	1.32 Ohms	Mounting	Rigid Base
Motor Orientation	Horizontal Or Shaft Down	Drive End Bearing	Ball
Opp Drive End Bearing	Ball	Frame Material	Cast Iron
Shaft Type	JM	Overall Length	26.60 in
Shaft Diameter	1.250 in	Shaft Extension	5.25 in
Assembly/Box Mounting	F1/F2 CAPABLE		
Connection Drawing	EE7300	Outline Drawing	SS620564-254



254	26.60	12.80	8.25
256	27.80	13.98	10.00
FRAME	C	BB	2F

		TOLERANCES UNLESS SPECIFIED		REGAL-BELOIT CORPORATION		DRAWN L.S.J 05-16-2012	
		DEC.	INCHES			CHK	
		.X	±.1			APPD	
		.XX	±.03			SCALE	1=4
		.XXX	±.005			REF	
		.XXXX	±.0005			FMF	HWADA
						PREV	
NO.	REVISION	BY & DATE	CHK	ANG	±1/2	FINISH	
				THIS DRAWING IN DESIGN AND DETAIL IS OUR PROPERTY AND MUST NOT BE USED EXCEPT IN CONNECTION WITH OUR WORK. ALL RIGHTS OF DESIGN AND INVENTION ARE RESERVED. THIS IS AN ELECTRONICALLY GENERATED DOCUMENT - DO NOT SCALE THIS PRINT		RFP	
				DIST		CAD FILE	SS620564
						SIZE	DRAWING NO.
						B	SS620564
						REV.	

THREE PHASE - SINGLE VOLTAGE MOTOR - CONDUIT BOX @ 'A'

TO REVERSE ROTATION:
INTERCHANGE ANY TWO
LINE LEAD CONNECTIONS.

TERMINAL BLOCK WHEN SPECIFIED



IF MOTOR HAS 6 LEADS



A-9806 DECAL

OPTIONAL CORD CONNECTION



VIEW OF TERMINAL END

DRAWING REVISION AB	REVISION BY JJB	DATE 06-27-2017
ECO ECO-0125361	APPROVED BY TB	DATE 06-27-2017
ECO DESCRIPTION UPDATED TO CURRENT STANDARDS		
<small>COPYRIGHT REGAL BELOIT AMERICA, INC. ALL RIGHTS RESERVED. PROPRIETARY AND CONFIDENTIAL INFORMATION - THIS DOCUMENT IS THE PROPERTY OF REGAL BELOIT AMERICA, INC. ("OWNER") AND CONTAINS OWNER'S PROPRIETARY INFORMATION. ANY PERSON, CORPORATION OR OTHER FIRM RECEIVING IT IS DEEMED, BY RECEIVING IT, TO AGREE THAT IT, AND/OR ANY PART OF IT, SHALL NOT BE DISCLOSED TO ANY PERSON, CORPORATION OR OTHER ENTITY, DUPLICATED, AND/OR USED, EXCEPT AS EXPRESSLY APPROVED IN WRITING IN ADVANCE BY OWNER. THIS DOCUMENT SHALL BE RETURNED TO OWNER UPON REQUEST. IT MAY BE SUBJECT TO CERTAIN RESTRICTIONS UNDER APPLICABLE EXPORT CONTROL LAWS AND REGULATIONS.</small>		

DRAWN BY DA
DATE 03-26-1993
APPROVED BY TB
DATE 03-26-1993
REFERENCE
THIRD ANGLE PROJECTION



Regal Beloit America, Inc.

DESCRIPTION
CONNECTION DIAGRAM
EXTERNAL - SINGLE VOLTAGE - 3Ø MOTOR

MATERIAL PROCESS/FINISH

SIZE A	DRAWING NUMBER EE7300	SHEET 1 OF 1
-----------	--------------------------	-----------------

CERTIFICATION DATA SHEET

Model#: 254TTFCA6092 AA

WINDING#: CHT25460001 NONE 3

CONN. DIAGRAM: EE7300

ASSEMBLY: F1/F2 CAPABLE

OUTLINE: SS620564

TYPICAL MOTOR PERFORMANCE DATA

HP	KW	SYNC. RPM	F.L. RPM	FRAME	ENCLOSURE	KVA CODE	DESIGN
7 1/2	5.6	1200	1182	254JMV	TEFC	G	B

PH	Hz	VOLTS	FL AMPS	START TYPE	DUTY	INSL	S.F	AMB°C	ELEVATION
3	60	575	8.4	LINE OR INVERTER	CONTINUOU S	F7	1.15	40	3300

FULL LOAD EFF: 91	3/4 LOAD EFF: 91	1/2 LOAD EFF: 89.5	GTD. EFF	ELEC. TYPE	NO LOAD AMPS
FULL LOAD PF: 74	3/4 LOAD PF: 67	1/2 LOAD PF: 55	90.2	SQ CAGE INV RATED	4.5

F.L. TORQUE	LOCKED ROTOR AMPS	L.R. TORQUE	B.D. TORQUE	F.L. RISE°C
33.4 LB-FT	44	51 LB-FT 153	100 LB-FT 305	40

SOUND PRESSURE @ 3 FT.	SOUND POWER	ROTOR WK^2	MAX. WK^2	SAFE STALL TIME	STARTS /HOUR	APPROX. MOTOR WGT
56 dBA	66 dBA	2.5 LB-FT^2	150 LB-FT^2	20 SEC.	2	325 LBS.

*** SUPPLEMENTAL INFORMATION ***

DE BRACKET TYPE	ODE BRACKET TYPE	MOUNT TYPE	ORIENTATION	SEVERE DUTY	HAZARDOUS LOCATION	DRIP COVER	SCREENS	PAINT
C-FACE	STANDARD	RIGID	HORIZONTAL OR SHAFT DOWN	FALSE	NONE	FALSE	NONE	BLUE (ENAMEL)

BEARINGS		GREASE	SHAFT TYPE	SPECIAL DE	SPECIAL ODE	SHAFT MATERIAL	FRAME MATERIAL
DE	OPE						
BALL	BALL						
6309	6209	POLYREX EM	JM	NONE	NONE	1045 HOT ROLLED (C-204)	CAST IRON

THERMO-PROTECTORS				THERMISTORS	CONTROL	SPACE /n HEATERS
THERMOSTATS	PROTECTORS	WDG RTDs	BRG RTDs			
NONE	NOT	NONE	NONE	NONE	FALSE	NONE VOLTS

If Inverter equals NONE, contact factory for further
information

INVERTER TORQUE: VARIABLE 10:1			
INV. HP SPEED RANGE: NONE			
ENCODER: NONE			
NONE NONE			
NONE NONE PPR			
BRAKE: NONE NONE			
NONE P/N NONE			
NONE NONE			
NONE FT-LB	NONE V	NONE Hz	

*
N
O
T
E
S
*

DATE: 06/23/2017 04:01:21 AM

FORM 3531 REV.3 02/07/99

** Subject to change without notice.

Data Sheet

Date: 6/19/2017

Customer: _____

Attention: _____

Submitted by: FAREEDA DUDEKULA



254TTFCA6092

Submittal

Data @ 575 V

Motor Load Data

Load	0%	25%	50%	75%	100%	115%	125%	LR	
Current (Amps)	4.5	4.8	5.8	7.0	8.4	9.4	10.2	44.0	
Torque (ft-lb)	0.00	8.3	16.5	25.0	33.4	38.5	42.0	51.0	
RPM	1200	1195	1192	1185	1182	1,180	1178	0	
Efficiency (%)		84.0	89.5	91.0	91.0	91.0	90.2		
P.F. (%)	5.5	35.0	55.0	67.0	74.0	75.0	76.0	34.0	

Motor Speed Data

	LR	Pull-Up	BD	Rated	Idle																																																																																																																																							
Speed (RPM)	0	600	1100	1182	1200																																																																																																																																							
Current (Amps)	44.0	39.2	27.2	8.4	4.5																																																																																																																																							
Torque (ft-lb)	51.0	46.0	100	33.4	0.00																																																																																																																																							
<div><div><div>Efficiency (%)</div><div>P.F. (%)</div><div>Current (Amps)</div></div><div>EFFICIENCY (%)</div><div>P.F. (%)</div><div>CURRENT (AMPS)</div><div>LOAD</div></div> <table><tr><td colspan="2">HP</td><td colspan="3">7.5</td></tr><tr><td colspan="2">Sync. RPM</td><td colspan="3">1200</td></tr><tr><td colspan="2">Frame</td><td colspan="3">254</td></tr><tr><td colspan="2">Enclosure</td><td colspan="3">TEFC</td></tr><tr><td colspan="2">Construction</td><td colspan="3">TFC</td></tr><tr><td colspan="2">Voltage</td><td colspan="3">575 V</td></tr><tr><td colspan="2">Frequency</td><td colspan="3">60 Hz</td></tr><tr><td colspan="2">Design</td><td colspan="3">B</td></tr><tr><td colspan="2">LR Code letter</td><td colspan="3">G</td></tr><tr><td colspan="2">Service Factor</td><td colspan="3">1.15</td></tr><tr><td colspan="2">Temp Rise @ FL</td><td colspan="3">40 ° C</td></tr><tr><td colspan="2">Duty</td><td colspan="3">CONT</td></tr><tr><td colspan="2">Ambient</td><td colspan="3">40 ° C</td></tr><tr><td colspan="2">Elevation</td><td colspan="3">1,000 feet</td></tr><tr><td colspan="2">Rotor/Shaft wk²</td><td colspan="3">2.50 Lb-Ft²</td></tr><tr><td colspan="2">Ref Wdg</td><td colspan="3">CHT25460001 NONE</td></tr><tr><td colspan="2">Sound Pressure @ 1M</td><td colspan="3">56 dBA</td></tr><tr><td colspan="2">VFD Rating</td><td colspan="3">VARIABLE 10:1</td></tr><tr><td colspan="2">Outline Dwg</td><td colspan="3">SS620564</td></tr><tr><td colspan="2">Conn. Diag</td><td colspan="3">EE7300</td></tr><tr><td colspan="5">Additional Specifications:</td></tr><tr><td colspan="5">0</td></tr><tr><td colspan="5">0</td></tr><tr><td colspan="5">EQUIV CKT (OHMS / PHASE)</td></tr><tr><td>R1</td><td>R2</td><td>X1</td><td>X2</td><td>Xm</td></tr><tr><td>1.2400</td><td>0.7090</td><td>3.3670</td><td>5.4930</td><td>72.3520</td></tr></table>						HP		7.5			Sync. RPM		1200			Frame		254			Enclosure		TEFC			Construction		TFC			Voltage		575 V			Frequency		60 Hz			Design		B			LR Code letter		G			Service Factor		1.15			Temp Rise @ FL		40 ° C			Duty		CONT			Ambient		40 ° C			Elevation		1,000 feet			Rotor/Shaft wk²		2.50 Lb-Ft²			Ref Wdg		CHT25460001 NONE			Sound Pressure @ 1M		56 dBA			VFD Rating		VARIABLE 10:1			Outline Dwg		SS620564			Conn. Diag		EE7300			Additional Specifications:					0					0					EQUIV CKT (OHMS / PHASE)					R1	R2	X1	X2	Xm	1.2400	0.7090	3.3670	5.4930	72.3520	Information Block				
						HP		7.5																																																																																																																																				
						Sync. RPM		1200																																																																																																																																				
						Frame		254																																																																																																																																				
						Enclosure		TEFC																																																																																																																																				
						Construction		TFC																																																																																																																																				
						Voltage		575 V																																																																																																																																				
						Frequency		60 Hz																																																																																																																																				
						Design		B																																																																																																																																				
						LR Code letter		G																																																																																																																																				
						Service Factor		1.15																																																																																																																																				
						Temp Rise @ FL		40 ° C																																																																																																																																				
						Duty		CONT																																																																																																																																				
						Ambient		40 ° C																																																																																																																																				
						Elevation		1,000 feet																																																																																																																																				
						Rotor/Shaft wk²		2.50 Lb-Ft²																																																																																																																																				
						Ref Wdg		CHT25460001 NONE																																																																																																																																				
Sound Pressure @ 1M		56 dBA																																																																																																																																										
VFD Rating		VARIABLE 10:1																																																																																																																																										
Outline Dwg		SS620564																																																																																																																																										
Conn. Diag		EE7300																																																																																																																																										
Additional Specifications:																																																																																																																																												
0																																																																																																																																												
0																																																																																																																																												
EQUIV CKT (OHMS / PHASE)																																																																																																																																												
R1	R2	X1	X2	Xm																																																																																																																																								
1.2400	0.7090	3.3670	5.4930	72.3520																																																																																																																																								
HP		7.5																																																																																																																																										
Sync. RPM		1200																																																																																																																																										
Frame		254																																																																																																																																										
Enclosure		TEFC																																																																																																																																										
Construction		TFC																																																																																																																																										
Voltage		575 V																																																																																																																																										
Frequency		60 Hz																																																																																																																																										
Design		B																																																																																																																																										
LR Code letter		G																																																																																																																																										
Service Factor		1.15																																																																																																																																										
Temp Rise @ FL		40 ° C																																																																																																																																										
Duty		CONT																																																																																																																																										
Ambient		40 ° C																																																																																																																																										
Elevation		1,000 feet																																																																																																																																										
Rotor/Shaft wk²		2.50 Lb-Ft²																																																																																																																																										
Ref Wdg		CHT25460001 NONE																																																																																																																																										
Sound Pressure @ 1M		56 dBA																																																																																																																																										
VFD Rating		VARIABLE 10:1																																																																																																																																										
Outline Dwg		SS620564																																																																																																																																										
Conn. Diag		EE7300																																																																																																																																										
Additional Specifications:																																																																																																																																												
0																																																																																																																																												
0																																																																																																																																												
EQUIV CKT (OHMS / PHASE)																																																																																																																																												
R1	R2	X1	X2	Xm																																																																																																																																								
1.2400	0.7090	3.3670	5.4930	72.3520																																																																																																																																								

Speed -Torque Curve

