

PRODUCT INFORMATION PACKET

marathon®
Motors

Model No: 254TTFCA6085

Catalog No: GT3417

Globetrotter® Close-Coupled Pump Motor, 7.50 & 5 HP, 3 Ph, 60 & 50 Hz, 230/460 & 190/380 V,
1200 & 1000 RPM, 254JPV Frame, TEFC



Regal and Marathon are trademarks of Regal Rexnord Corporation or one of its affiliated companies.

©2023 Regal Rexnord Corporation, All Rights Reserved. MC017097E

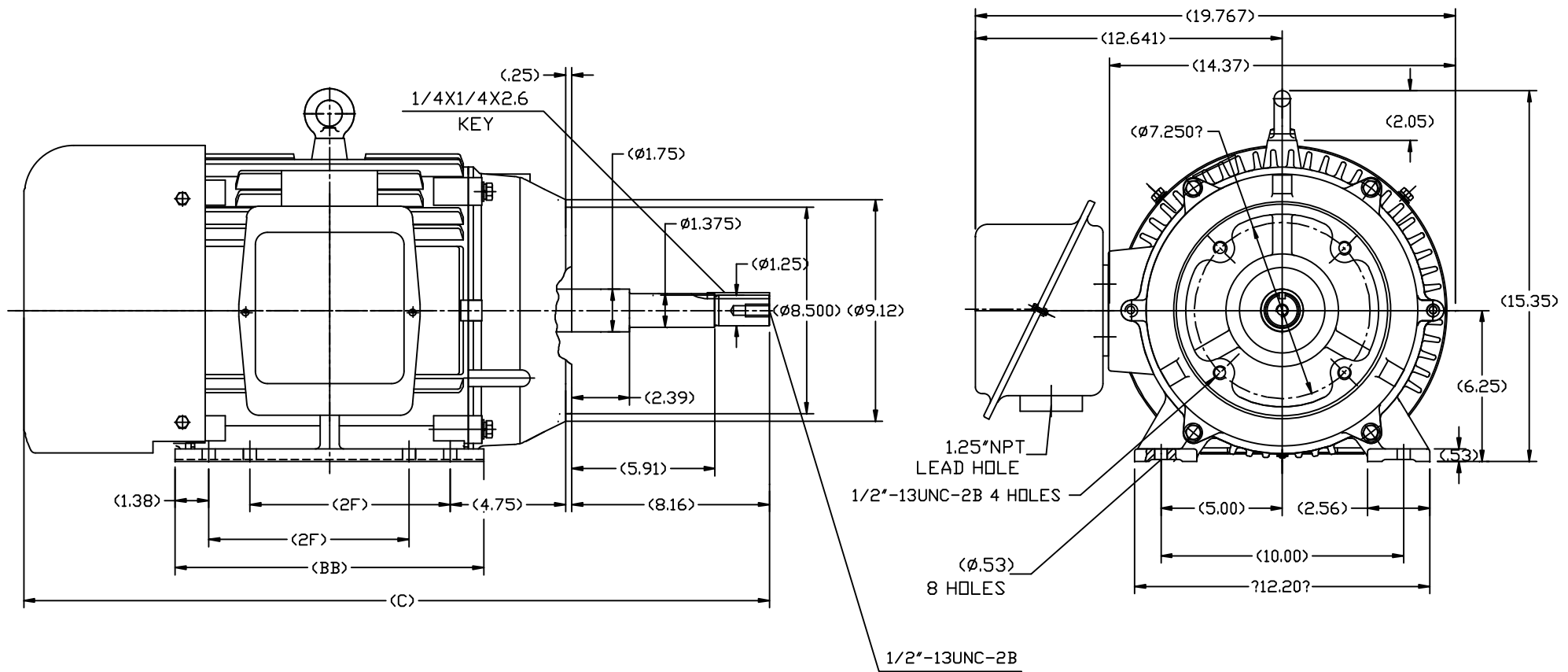
RegalRexnord

Nameplate Specifications

Phase	3	Output HP	7.50 & 5 Hp
Output KW	5.6 & 3.7 kW	Voltage	230/460 & 190/380 V
Speed	1182 & 985 rpm	Service Factor	1.15 & 1.15
Frame	254JPV	Enclosure	Totally Enclosed Fan Cooled
Thermal Protection	No Protection	Efficiency	91 & 90.2 %
Ambient Temperature	40 °C	Frequency	60 & 50 Hz
Current	21/10.5 & 17.6/8.8 A	Power Factor	74
Duty	Continuous	Insulation Class	F
Design Code	B	KVA Code	G
Drive End Bearing Size	6309	Opp Drive End Bearing Size	6209
UL	Recognized	CSA	Y
CE	Y	IP Code	43
Number of Speeds	1		

Technical Specifications

Electrical Type	Squirrel Cage Inverter Rated	Starting Method	Line Or Inverter
Poles	6	Rotation	Reversible
Resistance Main	1.32 Ohms	Mounting	Rigid Base
Motor Orientation	Horizontal Or Shaft Down	Drive End Bearing	Ball
Opp Drive End Bearing	Ball	Frame Material	Cast Iron
Shaft Type	JP	Overall Length	29.51 in
Shaft Diameter	1.250 in	Shaft Extension	8.16 in
Assembly/Box Mounting	F1/F2 CAPABLE	Inverter Load	VARIABLE 10:1
Outline Drawing	SS620567-254	Connection Drawing	EE7308K

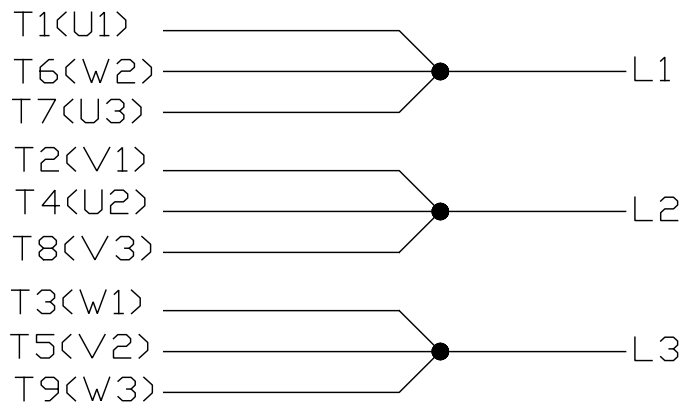


254	29.51	12.80	8.25
256	30.71	13.98	10.00
FRAME	C	BB	2F

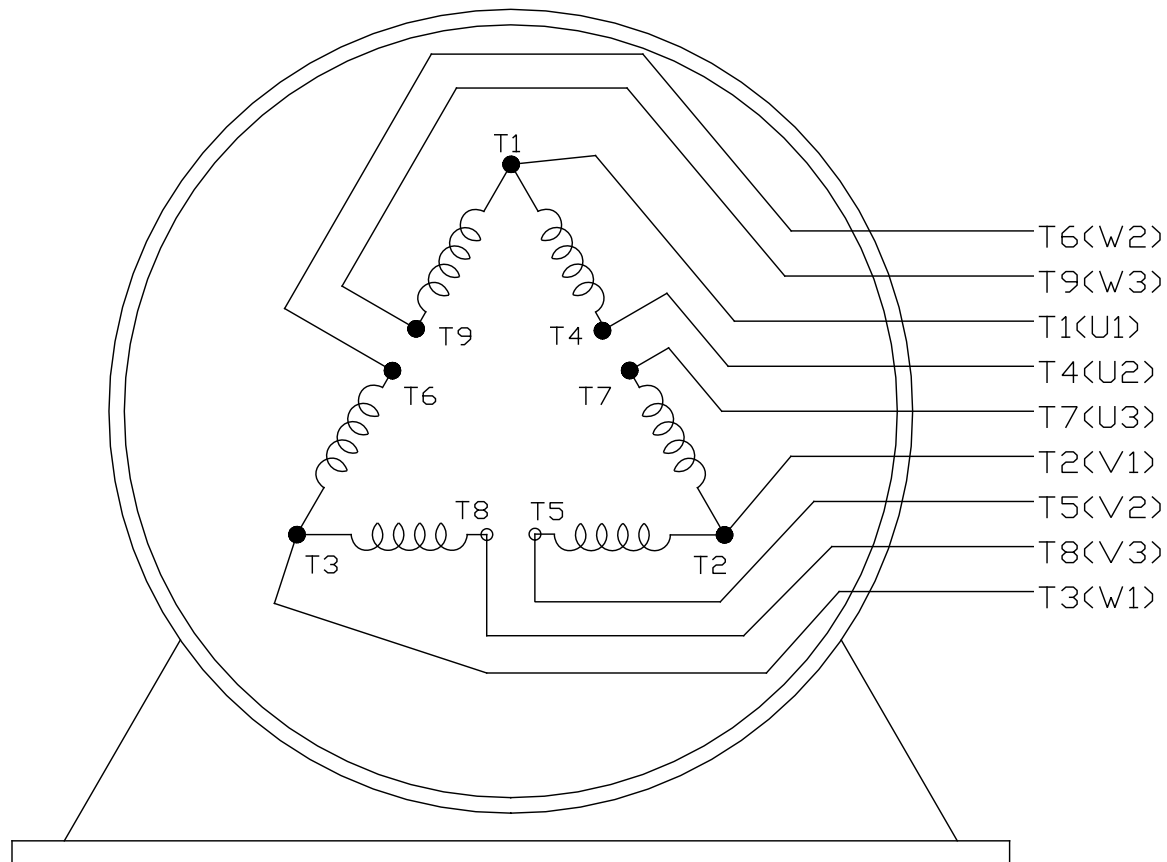
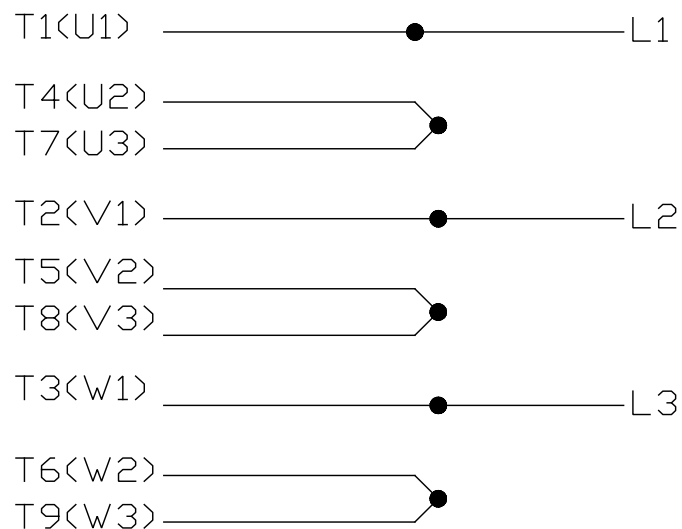
TOLERANCES UNLESS SPECIFIED				REGAL-BELOIT CORPORATION		DRAWN L.S.J 05-16-2012	
	DEC.	INCHES				CHK	
	.X	$\pm .1$				APPD	
	.XX	$\pm .03$				SCALE	1=4
	.XXX	$\pm .005$				REF	
	.XXXX	$\pm .0005$				FMF	HWADA
NO.	REVISION	BY & DATE	CHK	ANG	$\pm 1/2$	FINISH	PREV
THIS DRAWING IN DESIGN AND DETAIL IS OUR PROPERTY AND MUST NOT BE USED EXCEPT IN CONNECTION WITH OUR WORK. ALL RIGHTS OF DESIGN AND INVENTION ARE RESERVED. THIS IS AN ELECTRONICALLY GENERATED DOCUMENT - DO NOT SCALE THIS PRINT				RFP	CAD FILE	SS620567	SIZE
				DIST			DRAWING NO.
							B
							SS620567
							REV.

LOW VOLTAGE


EE7308K



HIGH VOLTAGE



VIEW OF TERMINAL END

				TOLERANCES UNLESS SPECIFIED		 REGAL - BELOIT CORPORATION	DRAWN PGK 06-04-1997						
E	CORRECTED IEC MARKINGS	ECO-0111208	WGJ 01-23-2017	EMH	DEC.		INCHES	CHK	ML	06-05-1997			
D	RE-DRAWN WITH REGAL LOGO	ECO-0110493	WGJ 09-30-2016	EMH	.X		±.1	APPD	GK	06-15-1997			
8	ADDED IEC DESIGNATIONS	MU95020	TJW 4/30/2010	MJS	.XX	±.02	TITLE		CONNECTION DIAGRAM	SCALE			
7	REVISD HIGH VOLTAGE L2 WAS L3	CN52600-354	MRB 09-21-1998		.XXX	±.005			DELTA CON. - 3Ø - 9 LEADS	REF			
6	REDRAWN ON CADD		PGK 06-05-1997		.XXXX	±.0005	MAT'L.			FMF			
NO.	REVISION	BY & DATE	CHK	ANG	± 7'30"		FINISH			PREV			
THIS DRAWING IN DESIGN AND DETAIL IS OUR PROPERTY AND MUST NOT BE USED EXCEPT IN CONNECTION WITH OUR WORK ALL RIGHTS OF DESIGN AND INVENTION ARE RESERVED THIS IS AN ELECTRONICALLY GENERATED DOCUMENT - DO NOT SCALE THIS PRINT				RFP			CAD FILE EE7308K		SIZE	DRAWING NO.	PAGE	OF	REV
				DIST					A	EE7308K			

CERTIFICATION DATA SHEET

Model#: 254TTFCA6085 AA

WINDING#: CHT25460001 NONE 1

CONN. DIAGRAM: EE7308K

ASSEMBLY: F1/F2 CAPABLE

OUTLINE: SS620567

TYPICAL MOTOR PERFORMANCE DATA

HP	KW	SYNC. RPM	F.L. RPM	FRAME	ENCLOSURE	KVA CODE	DESIGN
7 1/2&5	5.60&3.70	1200	1182&985	254JPV	TEFC	G	B

PH	Hz	VOLTS	FL AMPS	START TYPE	DUTY	INSL	S.F	AMB°C	ELEVATION
3	60/50	230/460#190/ 380	21/10.5&17.6/ 8.8	LINE OR INVERTER	CONTINUOU S	F7	1.15/1.15	40	3300

FULL LOAD EFF: 91&90.2	3/4 LOAD EFF: 91	1/2 LOAD EFF: 89.5	GTD. EFF	ELEC. TYPE	NO LOAD AMPS
FULL LOAD PF: 74&71	3/4 LOAD PF: 67	1/2 LOAD PF: 55	90.2	SQ CAGE INV RATED	11.2 / 5.6

F.L. TORQUE	LOCKED ROTOR AMPS	L.R. TORQUE	B.D. TORQUE	F.L. RISE°C
33.4 LB-FT	110 / 55	51 LB-FT 153	100 LB-FT 305	40

SOUND PRESSURE @ 3 FT.	SOUND POWER	ROTOR WK^2	MAX. WK^2	SAFE STALL TIME	STARTS /HOUR	APPROX. MOTOR WGT
56 dBA	66 dBA	2.5 LB-FT^2	150 LB-FT^2	20 SEC.	2	325 LBS.

*** SUPPLEMENTAL INFORMATION ***

DE BRACKET TYPE	ODE BRACKET TYPE	MOUNT TYPE	ORIENTATION	SEVERE DUTY	HAZARDOUS LOCATION	DRIP COVER	SCREENS	PAINT
C-FACE	STANDARD	RIGID	HORIZONTAL OR SHAFT DOWN	FALSE	NONE	FALSE	NONE	BLUE (ENAMEL)

BEARINGS		GREASE	SHAFT TYPE	SPECIAL DE	SPECIAL ODE	SHAFT MATERIAL	FRAME MATERIAL
DE	OPE						
BALL	BALL	POLYREX EM	JP	NONE	NONE	1045 HOT ROLLED (C-204)	CAST IRON
6309	6209						

THERMO-PROTECTORS				THERMISTORS	CONTROL	SPACE /n HEATERS
THERMOSTATS	PROTECTORS	WDG RTDs	BRG RTDs			
NONE	NOT	NONE	NONE	NONE	FALSE	NONE VOLTS

If Inverter equals NONE, contact factory for further information

* N O T E S *	INVERTER TORQUE: VARIABLE 10:1
	INV. HP SPEED RANGE: NONE
	ENCODER: NONE NONE NONE NONE NONE PPR
	BRAKE: NONE NONE NONE P/N NONE NONE NONE NONE FT-LB NONE V NONE Hz

DATE: 06/23/2017 04:00:54 AM
FORM 3531 REV.3 02/07/99
** Subject to change without notice.

Data Sheet

Date: 6/19/2017

Customer: _____

Attention: _____

Submitted by: FAREEDA DUDEKULA



254TTFCA6085

Submittal

Data @ 460 V

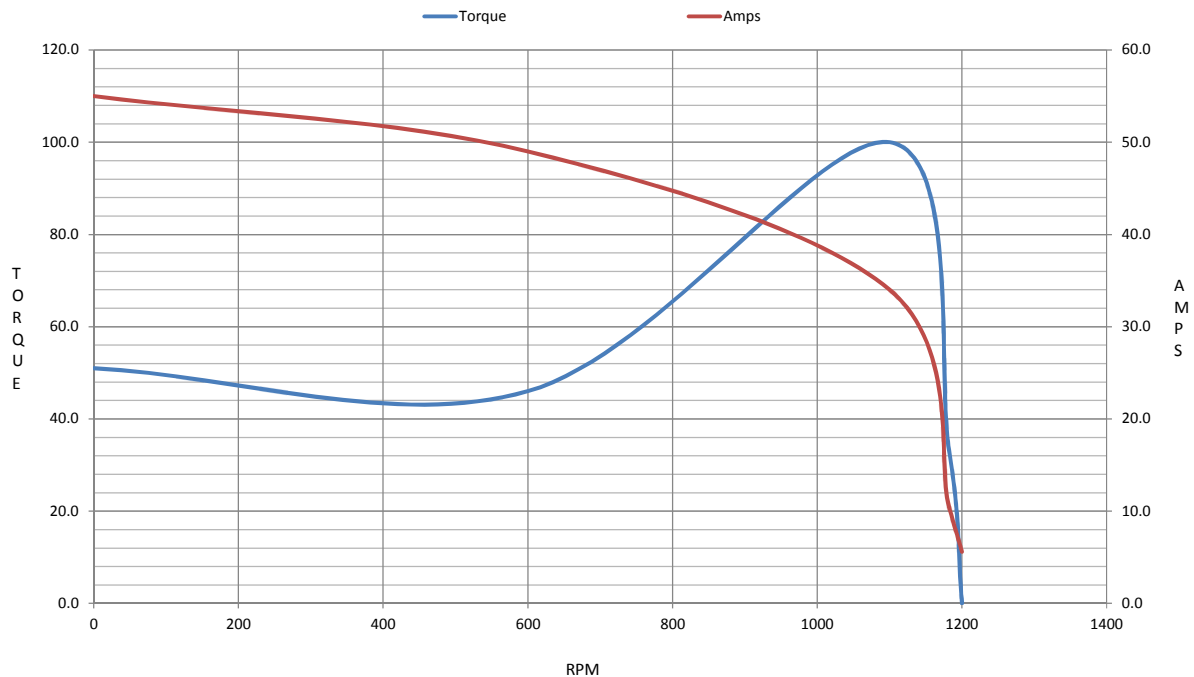
Motor Load Data

Load	0%	25%	50%	75%	100%	115%	125%	LR	
Current (Amps)	5.6	6.0	7.2	8.8	10.5	11.8	12.8	55.0	
Torque (ft-lb)	0.00	8.3	16.5	25.0	33.4	38.5	42.0	51.0	
RPM	1200	1195	1192	1185	1182	1,180	1178	0	
Efficiency (%)		84.0	89.5	91.0	91.0	91.0	90.2		
P.F. (%)	5.5	35.0	55.0	67.0	74.0	75.0	76.0	34.0	

Motor Speed Data

	LR	Pull-Up	BD	Rated	Idle																																																																																																																																		
Speed (RPM)	0	600	1100	1182	1200																																																																																																																																		
Current (Amps)	55.0	49.0	34.0	10.5	5.6																																																																																																																																		
Torque (ft-lb)	51.0	46.0	100	33.4	0.00																																																																																																																																		
<div><div><div>Efficiency (%)</div><div>P.F. (%)</div><div>Current (Amps)</div></div><div>EFFICIENCY (%)</div><div>P.F. (%)</div><div>CURRENT (AMPS)</div><div>LOAD</div></div> <table><tr><td colspan="2">HP</td><td colspan="3">7.5</td></tr><tr><td colspan="2">Sync. RPM</td><td colspan="3">1200</td></tr><tr><td colspan="2">Frame</td><td colspan="3">254</td></tr><tr><td colspan="2">Enclosure</td><td colspan="3">TEFC</td></tr><tr><td colspan="2">Construction</td><td colspan="3">TFC</td></tr><tr><td colspan="2">Voltage</td><td colspan="3">30/460#190/381V</td></tr><tr><td colspan="2">Frequency</td><td colspan="3">60 Hz</td></tr><tr><td colspan="2">Design</td><td colspan="3">B</td></tr><tr><td colspan="2">LR Code letter</td><td colspan="3">G</td></tr><tr><td colspan="2">Service Factor</td><td colspan="3">1.15</td></tr><tr><td colspan="2">Temp Rise @ FL</td><td colspan="3">40 ° C</td></tr><tr><td colspan="2">Duty</td><td colspan="3">CONT</td></tr><tr><td colspan="2">Ambient</td><td colspan="3">40 ° C</td></tr><tr><td colspan="2">Elevation</td><td colspan="3">1,000 feet</td></tr><tr><td colspan="2">Rotor/Shaft wk²</td><td colspan="3">2.50 Lb-Ft²</td></tr><tr><td colspan="2">Ref Wdg</td><td colspan="3">CHT25460001 NONE</td></tr><tr><td colspan="2">Sound Pressure @ 1M</td><td colspan="3">56 dBA</td></tr><tr><td colspan="2">VFD Rating</td><td colspan="3">VARIABLE 10:1</td></tr><tr><td colspan="2">Outline Dwg</td><td colspan="3">SS620567</td></tr><tr><td colspan="2">Conn. Diag</td><td colspan="3">EE7308K</td></tr><tr><td colspan="5">Additional Specifications:</td></tr><tr><td colspan="5">0</td></tr><tr><td colspan="5">0</td></tr><tr><td colspan="5">EQUIV CKT (OHMS / PHASE)</td></tr><tr><td>R1</td><td>R2</td><td>X1</td><td>X2</td><td>Xm</td></tr><tr><td>0.7940</td><td>0.4540</td><td>2.1550</td><td>3.5150</td><td>46.3050</td></tr></table>						HP		7.5			Sync. RPM		1200			Frame		254			Enclosure		TEFC			Construction		TFC			Voltage		30/460#190/381V			Frequency		60 Hz			Design		B			LR Code letter		G			Service Factor		1.15			Temp Rise @ FL		40 ° C			Duty		CONT			Ambient		40 ° C			Elevation		1,000 feet			Rotor/Shaft wk²		2.50 Lb-Ft²			Ref Wdg		CHT25460001 NONE			Sound Pressure @ 1M		56 dBA			VFD Rating		VARIABLE 10:1			Outline Dwg		SS620567			Conn. Diag		EE7308K			Additional Specifications:					0					0					EQUIV CKT (OHMS / PHASE)					R1	R2	X1	X2	Xm	0.7940	0.4540	2.1550	3.5150	46.3050
						HP		7.5																																																																																																																															
						Sync. RPM		1200																																																																																																																															
						Frame		254																																																																																																																															
						Enclosure		TEFC																																																																																																																															
						Construction		TFC																																																																																																																															
						Voltage		30/460#190/381V																																																																																																																															
						Frequency		60 Hz																																																																																																																															
						Design		B																																																																																																																															
						LR Code letter		G																																																																																																																															
						Service Factor		1.15																																																																																																																															
						Temp Rise @ FL		40 ° C																																																																																																																															
						Duty		CONT																																																																																																																															
						Ambient		40 ° C																																																																																																																															
						Elevation		1,000 feet																																																																																																																															
						Rotor/Shaft wk²		2.50 Lb-Ft²																																																																																																																															
						Ref Wdg		CHT25460001 NONE																																																																																																																															
Sound Pressure @ 1M		56 dBA																																																																																																																																					
VFD Rating		VARIABLE 10:1																																																																																																																																					
Outline Dwg		SS620567																																																																																																																																					
Conn. Diag		EE7308K																																																																																																																																					
Additional Specifications:																																																																																																																																							
0																																																																																																																																							
0																																																																																																																																							
EQUIV CKT (OHMS / PHASE)																																																																																																																																							
R1	R2	X1	X2	Xm																																																																																																																																			
0.7940	0.4540	2.1550	3.5150	46.3050																																																																																																																																			

Speed -Torque Curve



EC Declaration of Conformity

The undersigned representing
the manufacturer:

Regal Beloit America
100 East Randolph St.
Wausau, WI 54401

and the authorized representative
established within the Community:

Marathon Electric UK
6F Thistleton Road Ind. Estate
Market Overton
Oakham, Rutland LE15 7PP UK

are committed to providing customers with products that comply with applicable regulations and international protocols to which they are subject, including the requirements of the European Parliament Directive on the Harmonization of the laws relating to electrical equipment designed for use within certain voltage limits (2014/35/EU).

Regal Beloit America declares that the following product(s), to which this declaration relates, are in conformity with the relevant sections of the EC standards listed below.

This statement supersedes any statements previously issued pertaining to the product(s) listed below and is subject to change without notice.

Model No : 254TTFCA6085

(Model No. may contain prefix and/or suffix characters)

Catalog No : GT3417

Rework No : N/A

Directives :

Low Voltage Directive 2014/35/EU

Harmonized Standards Used :

EN 60034-1: 2010 (IEC 60034-1: 2010)

EN 60034-5: 2001/A1:2007 (IEC 60034-5: 2000/A1:2006)

Authorized Representative:



Michael A. Logsdon
Vice President, Technology

Authorized Representative in the Community:



Julian Clark
Marketing Engineer

Created on 09/01/2022

CE 22