

PRODUCT INFORMATION PACKET

marathon®
Motors

Model No: 254TTFCA6037

Catalog No: GT3422

Globetrotter® Close-Coupled Pump Motor, 15 & 10 HP, 3 Ph, 60 & 50 Hz, 230/460 & 190/380 V,
1800 & 1500 RPM, 254JP Frame, TEFC



Regal and Marathon are trademarks of Regal Rexnord Corporation or one of its affiliated companies.

©2023 Regal Rexnord Corporation, All Rights Reserved. MC017097E

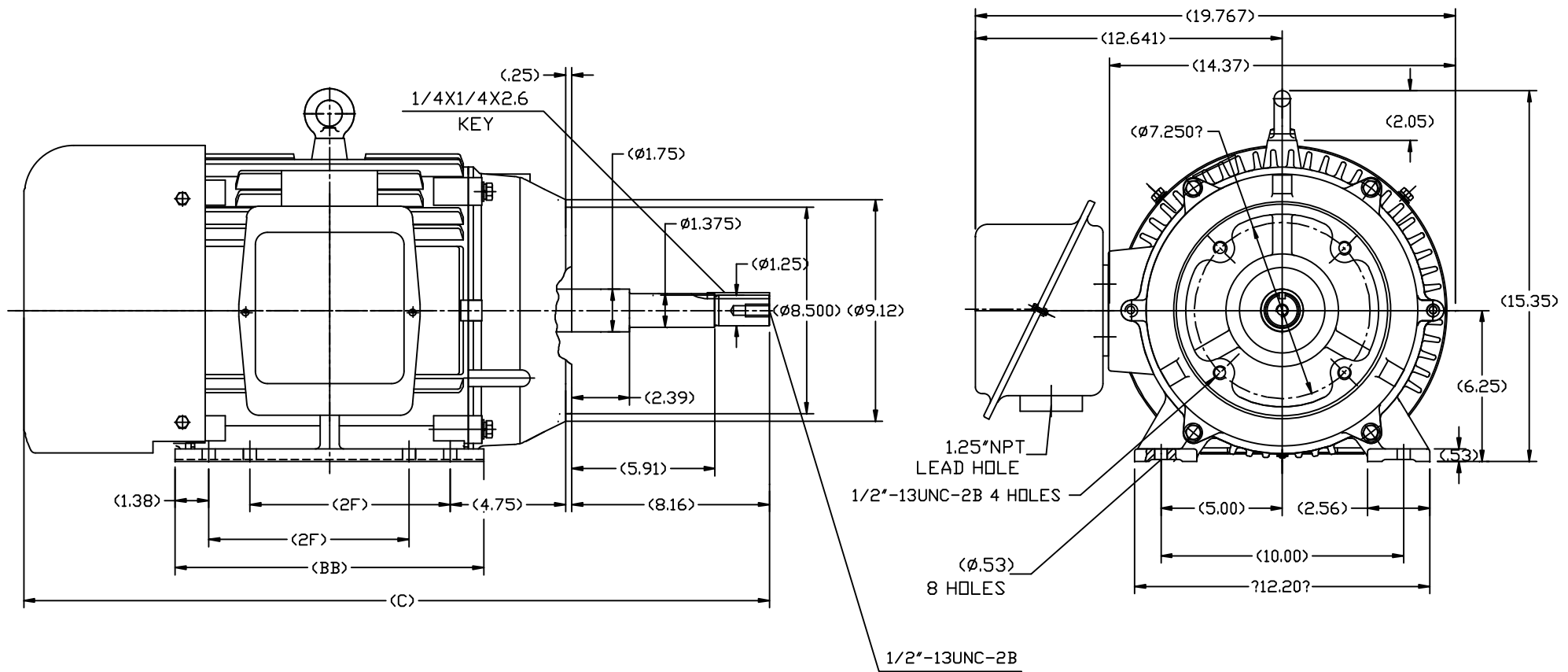
RegalRexnord

Nameplate Specifications


Phase	3	Output HP	15 & 10 Hp
Output KW	11.2 & 7.5 kW	Voltage	230/460 & 190/380 V
Speed	1770 & 1475 rpm	Service Factor	1.15 & 1.15
Frame	254JP	Enclosure	Totally Enclosed Fan Cooled
Thermal Protection	No Protection	Efficiency	92.4 & 93 %
Ambient Temperature	40 °C	Frequency	60 & 50 Hz
Current	37/18.5 & 31/15.5 A	Power Factor	82
Duty	Continuous	Insulation Class	F
Design Code	B	KVA Code	G
Drive End Bearing Size	6309	Opp Drive End Bearing Size	6209
UL	Recognized	CSA	Y
CE	Y	IP Code	43
Number of Speeds	1		

Technical Specifications

Electrical Type	Squirrel Cage Inverter Rated	Starting Method	Line Or Inverter
Poles	4	Rotation	Reversible
Resistance Main	.555 Ohms	Mounting	Rigid Base
Motor Orientation	Horizontal	Drive End Bearing	Ball
Opp Drive End Bearing	Ball	Frame Material	Cast Iron
Shaft Type	JP	Overall Length	29.51 in
Frame Length	10.02 in	Shaft Diameter	1.250 in
Shaft Extension	8.16 in	Assembly/Box Mounting	F1/F2 CAPABLE
Outline Drawing	SS620567-254	Connection Drawing	EE7308K

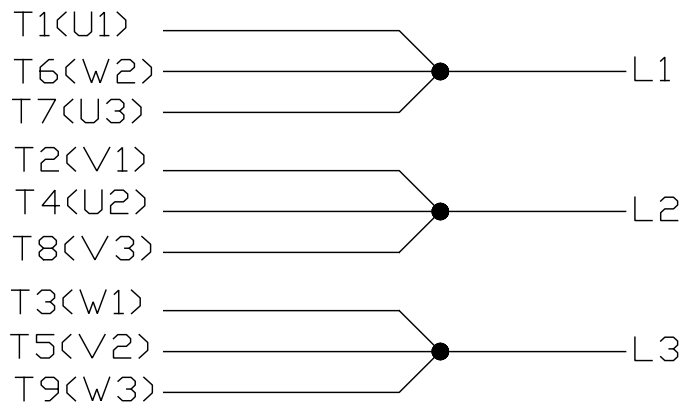


254	29.51	12.80	8.25
256	30.71	13.98	10.00
FRAME	C	BB	2F

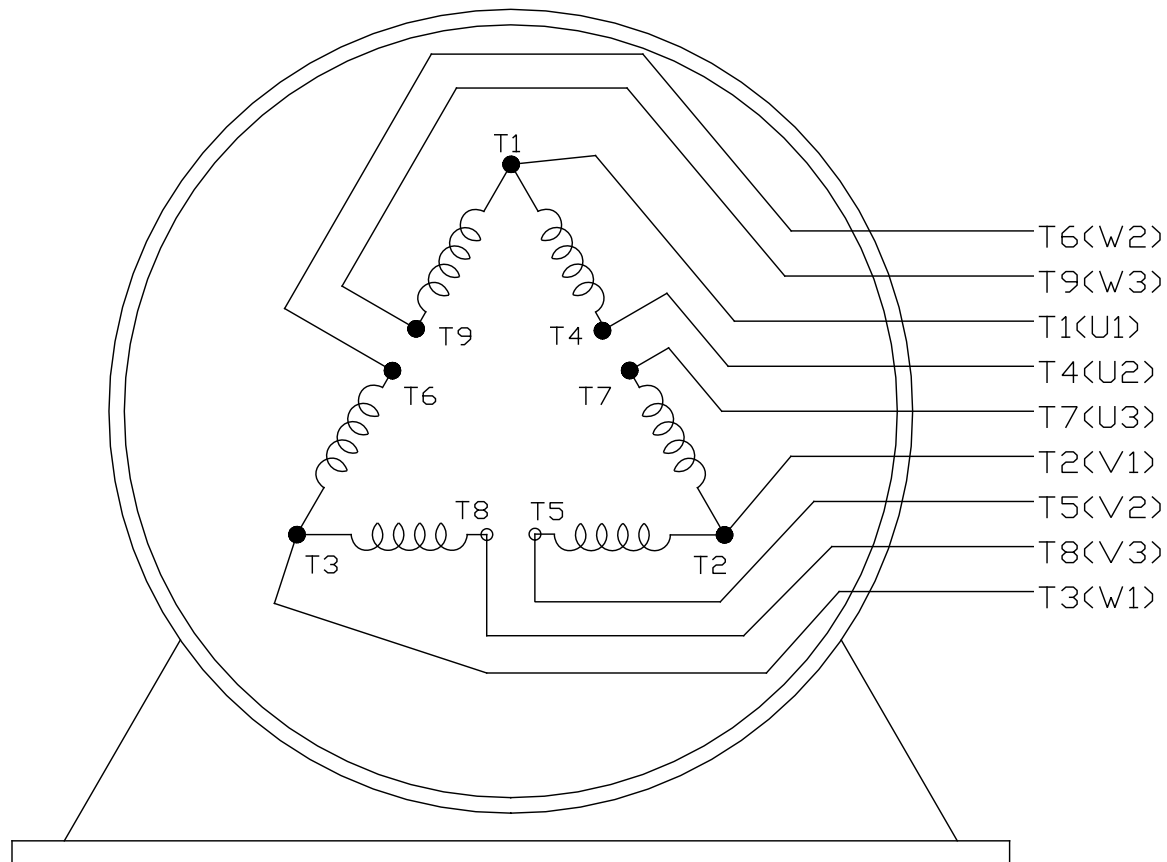
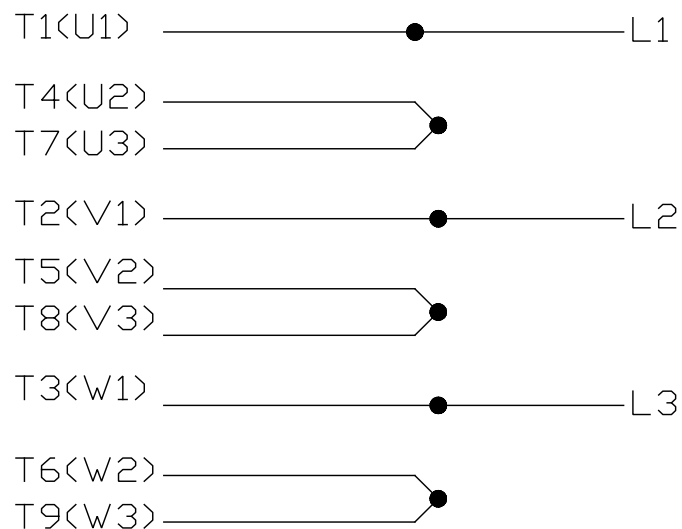
		TOLERANCES UNLESS SPECIFIED		 REGAL-BELOIT CORPORATION	DRAWN L.S.J 05-16-2012	
DEC.	INCHES				CHK	
.X	±.1				APPD	
.XX	±.03				SCALE	1=4
.XXX	±.005				REF	
.XXXX	±.0005			MAT'L	FMF	HWADA
NO.	REVISION	BY & DATE	CHK	ANG	±1/2	FINISH
THIS DRAWING IN DESIGN AND DETAIL IS OUR PROPERTY AND MUST NOT BE USED EXCEPT IN CONNECTION WITH OUR WORK. ALL RIGHTS OF DESIGN AND INVENTION ARE RESERVED. THIS IS AN ELECTRONICALLY GENERATED DOCUMENT - DO NOT SCALE THIS PRINT				RFP	CAD FILE	SS620567
				DIST	SIZE	DRAWING NO.
					B	SS620567
						REV.

LOW VOLTAGE


EE7308K



HIGH VOLTAGE



VIEW OF TERMINAL END

				TOLERANCES UNLESS SPECIFIED		 REGAL - BELOIT CORPORATION	DRAWN PGK 06-04-1997						
E	CORRECTED IEC MARKINGS	ECO-0111208	WGJ 01-23-2017	EMH	DEC.		INCHES	CHK	ML	06-05-1997			
D	RE-DRAWN WITH REGAL LOGO	ECO-0110493	WGJ 09-30-2016	EMH	.X		±.1	APPD	GK	06-15-1997			
8	ADDED IEC DESIGNATIONS	MU95020	TJW 4/30/2010	MJS	.XX		±.02	TITLE		SCALE			
7	REVISD HIGH VOLTAGE L2 WAS L3	CN52600-354	MRB 09-21-1998		.XXX		±.005	CONNECTION DIAGRAM DELTA CON. - 3Ø - 9 LEADS		REF			
6	REDRAWN ON CADD	PGK 06-05-1997			.XXXX	±.0005	MAT'L.		FMF				
NO.	REVISION	BY & DATE	CHK	ANG	± 7'30"		FINISH		PREV				
THIS DRAWING IN DESIGN AND DETAIL IS OUR PROPERTY AND MUST NOT BE USED EXCEPT IN CONNECTION WITH OUR WORK ALL RIGHTS OF DESIGN AND INVENTION ARE RESERVED THIS IS AN ELECTRONICALLY GENERATED DOCUMENT - DO NOT SCALE THIS PRINT				RFP			CAD FILE EE7308K		SIZE	DRAWING NO.	PAGE	OF	REV
				DIST					A	EE7308K			

CERTIFICATION DATA SHEET

Model#: 254TTFCA6037 AA

WINDING#: CHT25440001 NONE 1

CONN. DIAGRAM: EE7308K

ASSEMBLY: F1/F2 CAPABLE

OUTLINE: SS620567

TYPICAL MOTOR PERFORMANCE DATA

HP	KW	SYNC. RPM	F.L. RPM	FRAME	ENCLOSURE	KVA CODE	DESIGN
15&10	11.2&7.50	1800	1770&1475	254JP	TEFC	G	B

PH	Hz	VOLTS	FL AMPS	START TYPE	DUTY	INSL	S.F	AMB°C	ELEVATION
3	60/50	230/460#190/ 380	37/18.5&31/15 .5	LINE OR INVERTER	CONTINUOU S	F7	1.15/1.15	40	3300

FULL LOAD EFF: 92.4&93	3/4 LOAD EFF: 93	1/2 LOAD EFF: 91.7	GTD. EFF	ELEC. TYPE	NO LOAD AMPS
FULL LOAD PF: 82&79	3/4 LOAD PF: 77.5	1/2 LOAD PF: 67	91.7	SQ CAGE INV RATED	16 / 8

F.L. TORQUE	LOCKED ROTOR AMPS	L.R. TORQUE	B.D. TORQUE	F.L. RISE°C
44.5 LB-FT	220 / 110	74.8 LB-FT 168	116 LB-FT 260	45

SOUND PRESSURE @ 3 FT.	SOUND POWER	ROTOR WK^2	MAX. WK^2	SAFE STALL TIME	STARTS /HOUR	APPROX. MOTOR WGT
65 dBA	75 dBA	2.5 LB-FT^2	110 LB-FT^2	20 SEC.	2	400 LBS.

*** SUPPLEMENTAL INFORMATION ***

DE BRACKET TYPE	ODE BRACKET TYPE	MOUNT TYPE	ORIENTATION	SEVERE DUTY	HAZARDOUS LOCATION	DRIP COVER	SCREENS	PAINT
C-FACE	STANDARD	RIGID	HORIZONTAL	FALSE	NONE	FALSE	NONE	BLUE (ENAMEL)

BEARINGS		GREASE	SHAFT TYPE	SPECIAL DE	SPECIAL ODE	SHAFT MATERIAL	FRAME MATERIAL
DE	OPE						
BALL	BALL	POLYREX EM	JP	NONE	NONE	1045 HOT ROLLED (C-204)	CAST IRON
6309	6209						

THERMO-PROTECTORS				THERMISTORS	CONTROL	SPACE /n HEATERS
THERMOSTATS	PROTECTORS	WDG RTDs	BRG RTDs			
NONE	NOT	NONE	NONE	NONE	FALSE	NONE VOLTS

If Inverter equals NONE, contact factory for further
information

INVERTER TORQUE: VARIABLE 10:1			
INV. HP SPEED RANGE: NONE			
ENCODER: NONE			
NONE NONE			
NONE NONE PPR			
BRAKE: NONE NONE			
NONE P/N NONE			
NONE NONE			
NONE FT-LB	NONE V	NONE Hz	

*
N
O
T
E
S
*

DATE: 06/23/2017 03:58:06 AM
FORM 3531 REV.3 02/07/99
** Subject to change without notice.

Data Sheet

Date: 6/19/2017

Customer: _____

Attention: _____

Submitted by: FAREEDA DUDEKULA



254TTFCA6037

Submittal

Data @ 460 V

Motor Load Data

Load	0%	25%	50%	75%	100%	115%	125%	LR	
Current (Amps)	8.0	9.2	11.5	14.5	18.5	21.0	22.5	110	
Torque (ft-lb)	0.00	11.0	22.0	33.5	44.5	51.5	56.0	74.8	
RPM	1800	1790	1785	1780	1770	1,765	1760	0	
Efficiency (%)		87.5	91.7	93.0	92.4	92.4	91.7		
P.F. (%)	6.0	45.5	67.0	77.5	82.0	83.5	84.0	39.0	

Motor Speed Data

	LR	Pull-Up	BD	Rated	Idle	Information Block				
Speed (RPM)	0	900	1655	1770	1800	HP	15.0			
Current (Amps)	110	95.5	63.5	18.5	8.0	Sync. RPM	1800			
Torque (ft-lb)	74.8	65.0	116	44.5	0.00	Frame	254			
<div><div>— Efficiency (%) — P.F. (%) — Current (Amps)</div><div>EFFICIENCY, P.F., AND CURRENT VS. LOAD</div></div>						Enclosure	TEFC			
						Construction	TFC			
						Voltage	30/460#190/381V			
						Frequency	60 Hz			
						Design	B			
						LR Code letter	G			
						Service Factor	1.15			
						Temp Rise @ FL	45 ° C			
						Duty	CONT			
						Ambient	40 ° C			
						Elevation	1,000 feet			
						Rotor/Shaft wk ²	2.50 Lb-Fl ²			
						Ref Wdg	CHT25440001 NONE			
						Sound Pressure @ 1M	65 dBA			
						VFD Rating	VARIABLE 10:1			
						Outline Dwg	SS620567			
						Conn. Diag	EE7308K			
Additional Specifications:										
0										
0										
EQUIV CKT (OHMS / PHASE)										
R1		R2		X1		X2		Xm		
0.3590		0.2460		1.0960		1.7010		31.6950		

Speed -Torque Curve

