

# PRODUCT INFORMATION PACKET

**marathon®**  
Motors

Model No: 254TTFCA6006

Catalog No: GT3121

Globetrotter® Close-Coupled Pump Motor, 15 & 10 HP, 3 Ph, 60 & 50 Hz, 230/460 & 190/380 V,  
3600 & 3000 RPM, 254JM Frame, TEFC



Regal and Marathon are trademarks of Regal Rexnord Corporation or one of its affiliated companies.

©2023 Regal Rexnord Corporation, All Rights Reserved. MC017097E

**RegalRexnord**

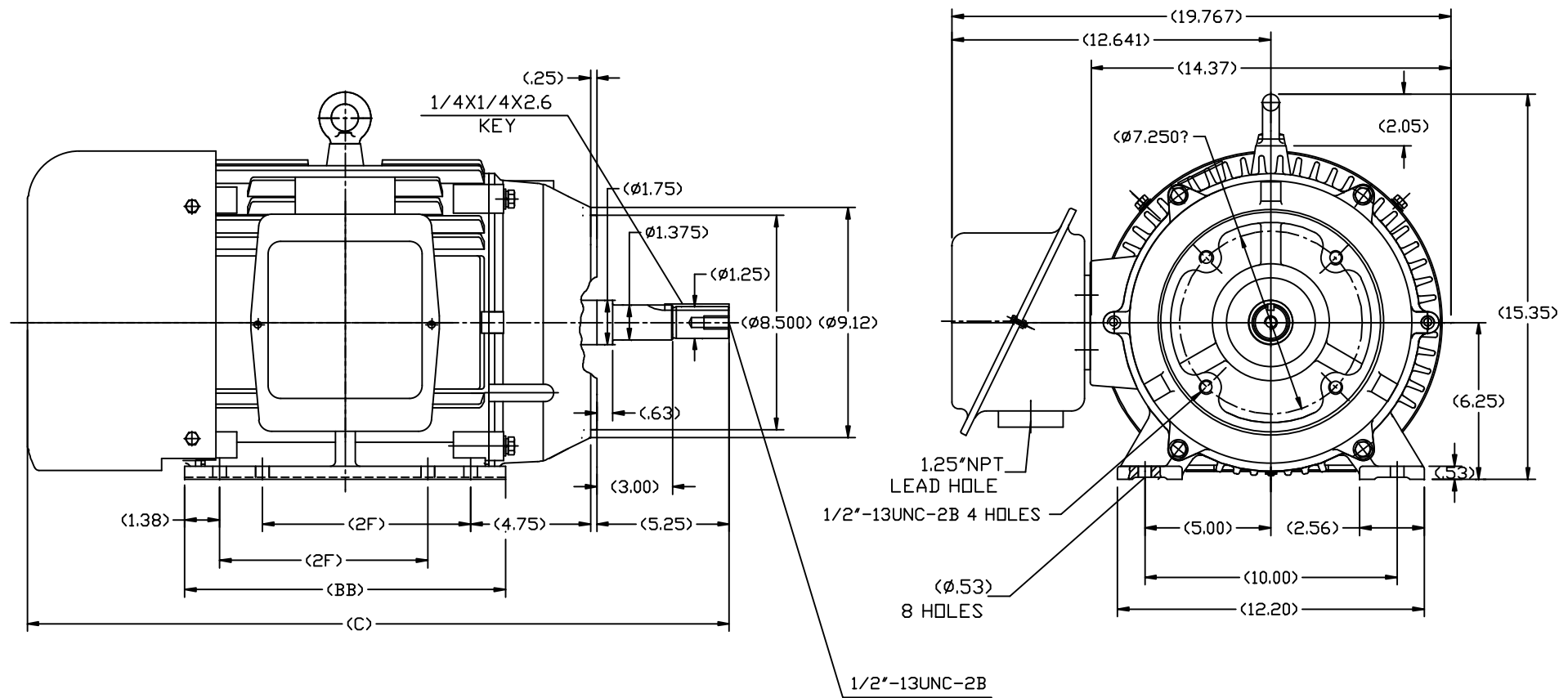
## Nameplate Specifications

Phase	3	Output HP	15 & 10 Hp
Output KW	11.2 & 7.5 kW	Voltage	230/460 & 190/380 V
Speed	3550 & 2965 rpm	Service Factor	1.15 & 1.0
Frame	254JM	Enclosure	Totally Enclosed Fan Cooled
Thermal Protection	No Protection	Efficiency	91.7 & 91.7 %
Ambient Temperature	40 °C	Frequency	60 & 50 Hz
Current	34/17 & 28/14 A	Power Factor	89
Duty	Continuous	Insulation Class	F
Design Code	B	KVA Code	G
Drive End Bearing Size	6209	Opp Drive End Bearing Size	6209
UL	Recognized	CSA	Y
CE	Y	IP Code	43
Number of Speeds	1		

## Technical Specifications

Electrical Type	Squirrel Cage Inverter Rated	Starting Method	Line Or Inverter
Poles	2	Rotation	Reversible
Resistance Main	.405 Ohms	Mounting	Rigid Base
Motor Orientation	Horizontal	Drive End Bearing	Ball
Opp Drive End Bearing	Ball	Frame Material	Cast Iron
Shaft Type	JM	Overall Length	26.60 in
Frame Length	10.02 in	Shaft Diameter	1.250 in
Shaft Extension	5.25 in	Assembly/Box Mounting	F1/F2 CAPABLE
Inverter Load	VARIABLE 10:1		
Connection Drawing	EE7308K	Outline Drawing	SS620564-254



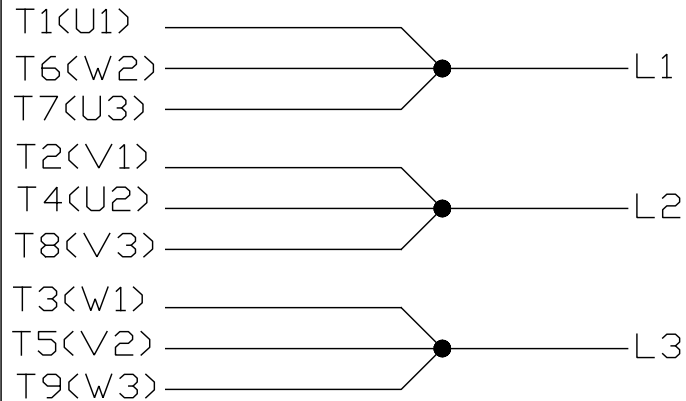
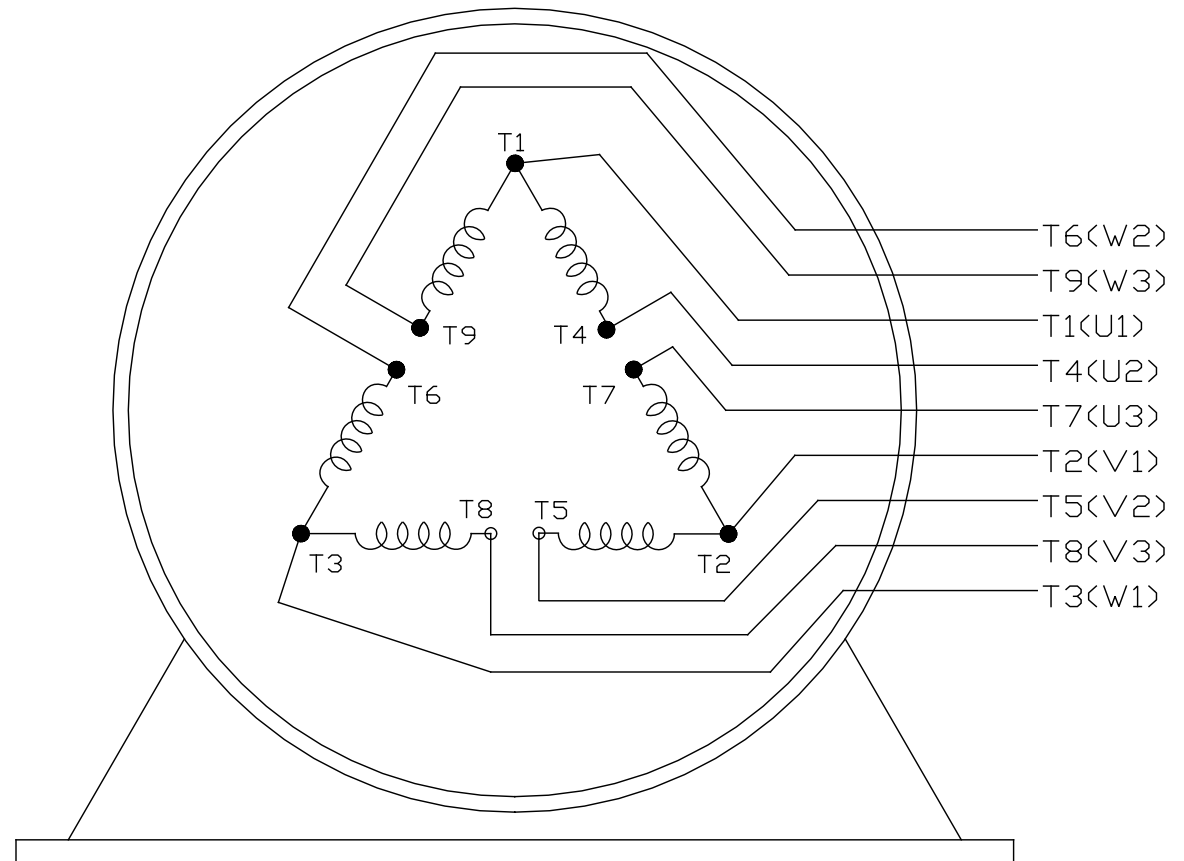
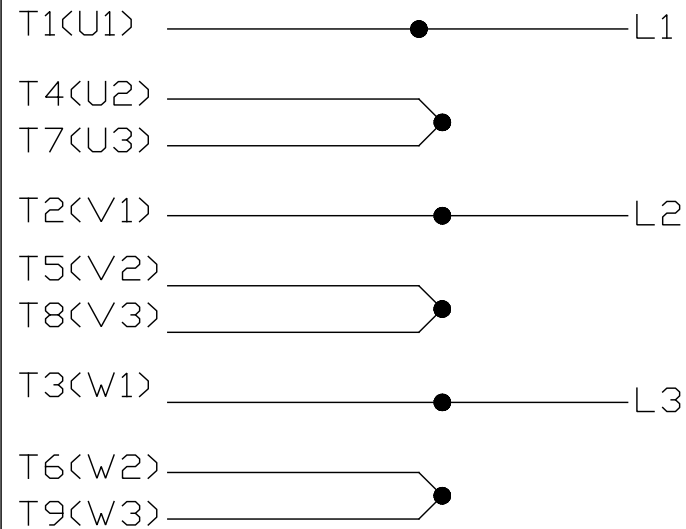


254	26.60	12.80	8.25
256	27.80	13.98	10.00
FRAME	C	BB	2F


TOLERANCES UNLESS SPECIFIED				DRAWN L.S.J 05-16-2012	
DEC.	INCHES			CHK	
.X	±.1			APPD	
.XX	±.03			SCALE	1=4
.XXX	±.005			REF	
.XXXX	±.0005			FMF	HWADA
NO.	REVISION	BY & DATE	CHK	ANG	±1/2
THIS DRAWING IN DESIGN AND DETAIL IS OUR PROPERTY AND MUST NOT BE USED EXCEPT IN CONNECTION WITH OUR WORK. ALL RIGHTS OF DESIGN AND INVENTION ARE RESERVED. THIS IS AN ELECTRONICALLY GENERATED DOCUMENT - DO NOT SCALE THIS PRINT				RFP	
				DIST	
				CAD FILE	SS620564
				SIZE	DRAWING NO.
				B	SS620564
				REV.	

LOW VOLTAGE

EE7308K

HIGH VOLTAGE

VIEW OF TERMINAL END

			TOLERANCES UNLESS SPECIFIED			 <b>REGAL - BELOIT CORPORATION</b>	DRAWN PGK 06-04-1997		
NO.	REVISION	BY & DATE	CHK	ANG	± 7'30"		CHK	ML	06-05-1997
E	CORRECTED IEC MARKINGS ECD-0111208	WGJ 01-23-2017	EMH	DEC.	INCHES				
D	RE-DRAWN WITH REGAL LOGO ECD-0110493	WGJ 09-30-2016	EMH	.X	± .1				
8	ADDED IEC DESIGNATIONS MU95020	TJW 4/30/2010	MJS	.XX	± .02	TITLE			
7	REVISED HIGH VOLTAGE L2 WAS L3 CN52600-354	MRB 09-21-1998		.XXX	± .005	CONNECTION DIAGRAM			
6	REDRAWN ON CADD	PGK 06-05-1997		.XXXX	± .0005	DELTA CON. - 3Ø - 9 LEADS			
						MAT'L.			
						FINISH			
THIS DRAWING IN DESIGN AND DETAIL IS OUR PROPERTY AND MUST NOT BE USED EXCEPT IN CONNECTION WITH OUR WORK ALL RIGHTS OF DESIGN AND INVENTION ARE RESERVED THIS IS AN ELECTRONICALLY GENERATED DOCUMENT - DO NOT SCALE THIS PRINT						RFP	CAD FILE EE7308K	SIZE	DRAWING NO. PAGE OF
						DIST		A	EE7308K
									REV. E

## CERTIFICATION DATA SHEET

Model#: 254TTFCA6006 AA

WINDING#: CHT25420001 NONE 1

CONN. DIAGRAM: EE7308K

ASSEMBLY: F1/F2 CAPABLE

OUTLINE: SS620564

## TYPICAL MOTOR PERFORMANCE DATA

HP	KW	SYNC. RPM	F.L. RPM	FRAME	ENCLOSURE	KVA CODE	DESIGN
15&10	11.2&7.50	3600	3550&2965	254JM	TEFC	G	B

PH	Hz	VOLTS	FL AMPS	START TYPE	DUTY	INSL	S.F	AMB°C	ELEVATION
3	60/50	230/460#190/ 380	34/17&28/14	LINE OR INVERTER	CONTINUOU S	F2	1.15/1.0	40	3300

FULL LOAD EFF: 91.7&91.7	3/4 LOAD EFF: 91.7	1/2 LOAD EFF: 91	GTD. EFF	ELEC. TYPE	NO LOAD AMPS
FULL LOAD PF: 89&88	3/4 LOAD PF: 86	1/2 LOAD PF: 77	91	SQ CAGE INV RATED	11 / 5.5

F.L. TORQUE	LOCKED ROTOR AMPS	L.R. TORQUE	B.D. TORQUE	F.L. RISE°C
22.2 LB-FT	232 / 116	44 LB-FT 198	68 LB-FT 305	45

SOUND PRESSURE @ 3 FT.	SOUND POWER	ROTOR WK^2	MAX. WK^2	SAFE STALL TIME	STARTS /HOUR	APPROX. MOTOR WGT
72 dBA	82 dBA	1.6 LB-FT^2	22 LB-FT^2	20 SEC.	2	425 LBS.

## \*\*\* SUPPLEMENTAL INFORMATION \*\*\*

DE BRACKET TYPE	ODE BRACKET TYPE	MOUNT TYPE	ORIENTATION	SEVERE DUTY	HAZARDOUS LOCATION	DRIP COVER	SCREENS	PAINT
C-FACE	STANDARD	RIGID	HORIZONTAL	FALSE	NONE	FALSE	NONE	BLUE (ENAMEL)

BEARINGS		GREASE	SHAFT TYPE	SPECIAL DE	SPECIAL ODE	SHAFT MATERIAL	FRAME MATERIAL
DE	OPE						
BALL	BALL	POLYREX EM	JM	NONE	NONE	1045 HOT ROLLED (C-204)	CAST IRON
6209	6209						

THERMO-PROTECTORS				THERMISTORS	CONTROL	SPACE /n HEATERS
THERMOSTATS	PROTECTORS	WDG RTDs	BRG RTDs			
NONE	NOT	NONE	NONE	NONE	FALSE	NONE VOLTS

If Inverter equals NONE, contact factory for further  
information

INVERTER TORQUE: VARIABLE 10:1			
INV. HP SPEED RANGE: NONE			
ENCODER: NONE			
NONE NONE			
NONE NONE PPR			
BRAKE: NONE NONE			
NONE P/N NONE			
NONE NONE			
NONE FT-LB	NONE V	NONE Hz	

\*  
N  
O  
T  
E  
S  
\*

DATE: 06/21/2017 10:25:01 AM

FORM 3531 REV.3 02/07/99

\*\* Subject to change without notice.

## Data Sheet

Date: 16-06-2017

Customer:

Attention:

Submitted by: FAREEDA DUDEKULA



254TTFCA6006

Submittal

Data @ 460 V

## Motor Load Data

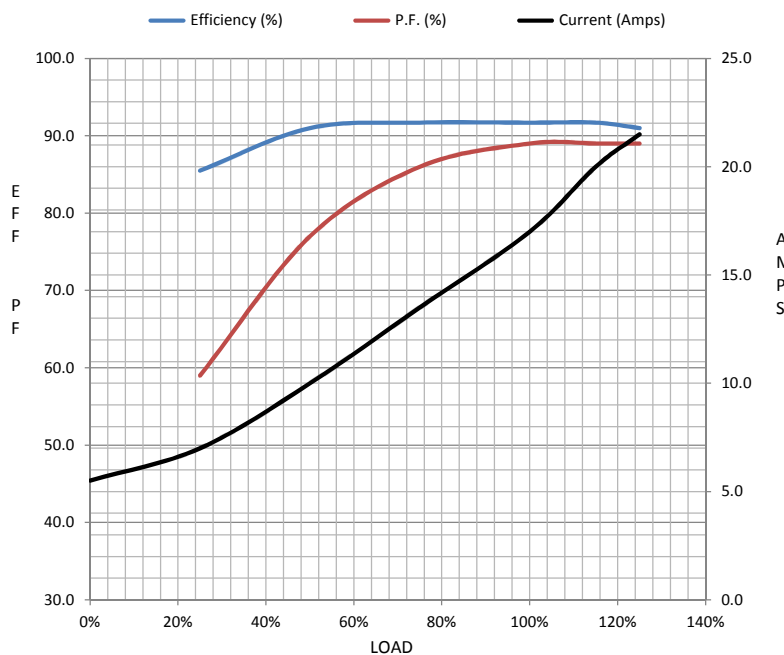
Load	0%	25%	50%	75%	100%	115%	125%	LR	
Current (Amps)	5.5	7.0	10.0	13.5	17.0	20.0	21.5	116	
Torque (ft-lb)	0.00	5.5	11.0	16.5	22.2	25.5	27.8	44.0	
RPM	3600	3590	3580	3565	3550	3,540	3525	0	
Efficiency (%)		85.5	91.0	91.7	91.7	91.7	91.0		
P.F. (%)	10.0	59.0	77.0	86.0	89.0	89.0	89.0	40.0	

## Motor Speed Data

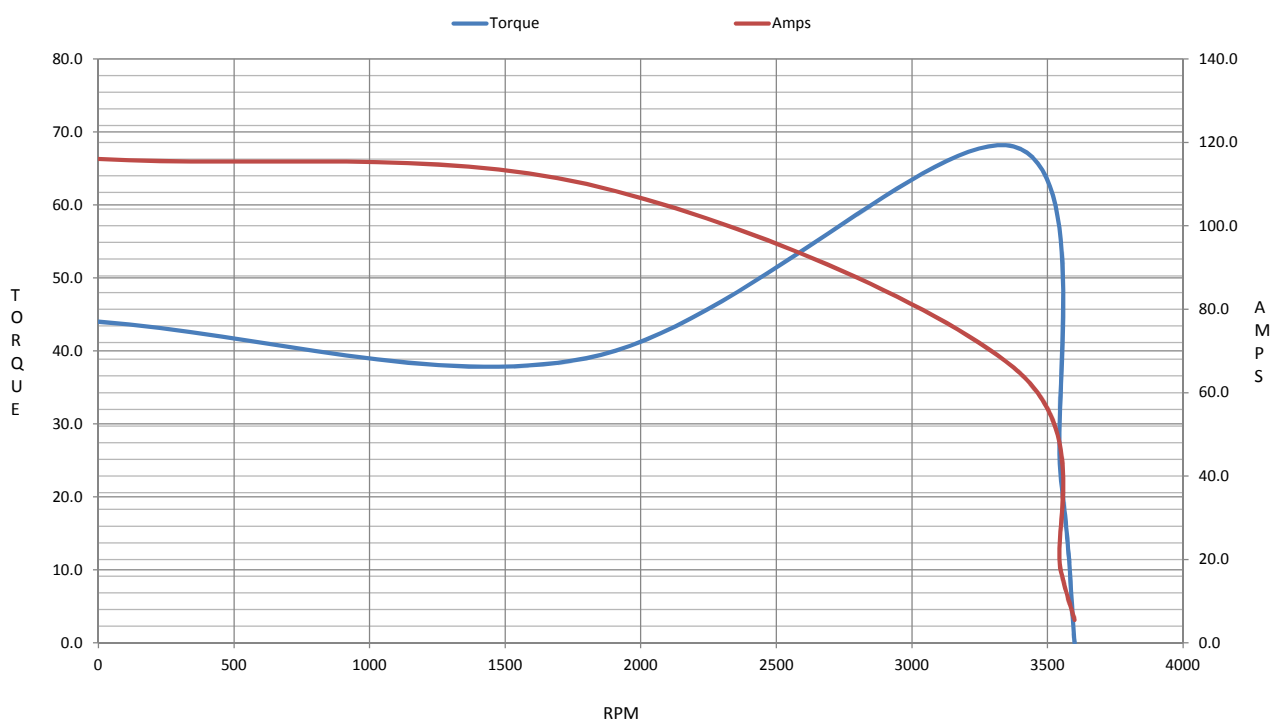
	LR	Pull-Up	BD	Rated	Idle
Speed (RPM)	0	1800	3375	3550	3600
Current (Amps)	116	110	66.0	17.0	5.5
Torque (ft-lb)	44.0	39.0	68.0	22.2	0.00

## Information Block

HP	15.0			
Sync. RPM	3600			
Frame	254			
Enclosure	TEFC			
Construction	TFC			
Voltage	230/460#190/38(V			
Frequency	60 Hz			
Design	A			
LR Code letter	G			
Service Factor	1.15			
Temp Rise @ FL	45 ° C			
Duty	CONT			
Ambient	40 ° C			
Elevation	1,000 feet			
Rotor/Shaft wk²	1.60 Lb-Ft²			
Ref Wdg	CHT25420001 NONE			
Sound Pressure @ 1M	72 dBA			
VFD Rating	VARIABLE 10:1			
Outline Dwg	SS620564			
Conn. Diag	EE7308K			
Additional Specifications:				
0				
365THFS8036				
EQUIV CKT (OHMS / PHASE)				
R1	R2	X1	X2	Xm
0.2740	0.1890	1.1090	1.4230	51.1250



## Speed -Torque Curve



## EC Declaration of Conformity

The undersigned representing  
the manufacturer:

Regal Beloit America  
100 East Randolph St.  
Wausau, WI 54401

and the authorized representative  
established within the Community:

Marathon Electric UK  
6F Thistleton Road Ind. Estate  
Market Overton  
Oakham, Rutland LE15 7PP UK

are committed to providing customers with products that comply with applicable regulations and international protocols to which they are subject, including the requirements of the European Parliament Directive on the Harmonization of the laws relating to electrical equipment designed for use within certain voltage limits (2014/35/EU).

Regal Beloit America declares that the following product(s), to which this declaration relates, are in conformity with the relevant sections of the EC standards listed below.

This statement supersedes any statements previously issued pertaining to the product(s) listed below and is subject to change without notice.

Model No : 254TTFCA6006

(Model No. may contain prefix and/or suffix characters)

Catalog No : GT3121

Rework No : N/A

### Directives :

Low Voltage Directive 2014/35/EU

### Harmonized Standards Used :

EN 60034-1: 2010 (IEC 60034-1: 2010)

EN 60034-5: 2001/A1:2007 (IEC 60034-5: 2000/A1:2006)

### Authorized Representative:



Michael A. Logsdon  
Vice President, Technology

### Authorized Representative in the Community:



Julian Clark  
Marketing Engineer

Created on 09/01/2022

**CE 22**