

PRODUCT INFORMATION PACKET

Model No: 254TTDX7377

Catalog No: Y203

Other Purpose Motor, 7.50 HP, 3 Ph, 60 Hz, 230/460/796 V, 1200 RPM, 254T Frame, DP



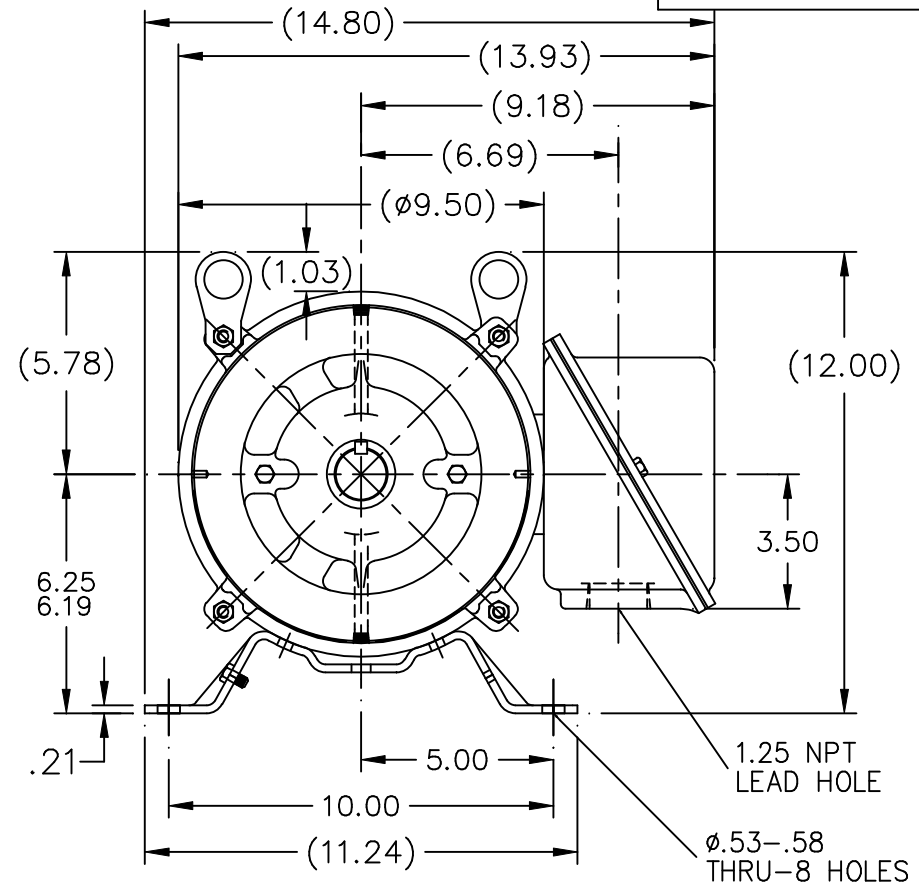
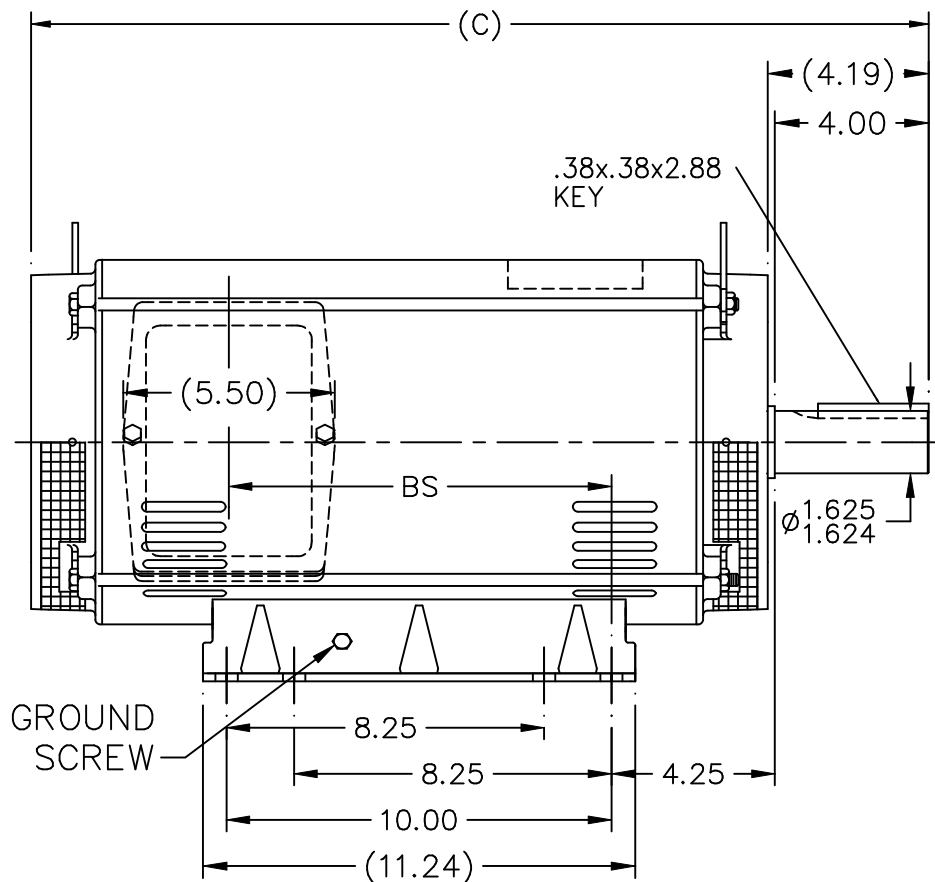
Regal and are trademarks of Regal Rexnord Corporation or one of its affiliated companies.
©2022 Regal Rexnord Corporation, All Rights Reserved. MC017097E

Nameplate Specifications

Output HP	7.50 Hp	Output KW	5.6 kW
Frequency	60 Hz	Voltage	230/460/796 V
Current	22.0/11.0/6.4 A	Speed	1140 rpm
Service Factor	1.15	Phase	3
Efficiency	85.5 %	Power Factor	74
Duty	Oil Well	Insulation Class	F
Design Code	D	KVA Code	J
Frame	254T	Enclosure	Drip Proof
Thermal Protection	No Protection	Ambient Temperature	40 °C
Drive End Bearing Size	6309	Opp Drive End Bearing Size	6208
UL	Recognized	CSA	N
CE	N	IP Code	23
Number of Speeds	1		

Technical Specifications

Electrical Type	Squirrel Cage Induction Run	Starting Method	Across The Line
Poles	6	Rotation	Reversible
Resistance Main	1.25 Ohms	Mounting	Rigid Base
Motor Orientation	Horizontal	Drive End Bearing	Ball
Opp Drive End Bearing	Ball	Frame Material	Rolled Steel
Shaft Type	T	Overall Length	21.29 in
Frame Length	13.40 in	Shaft Diameter	1.625 in
Shaft Extension	4 in	Assembly/Box Mounting	F2 Only
Outline Drawing	A-SS88053-1340	Connection Drawing	A-EE7326C



DASH	FR.	C	BS	MOUNTING
1340	254T	21.29	7.89	F2 SPL.
1370	254T	21.59	8.19	F2 SPL.
1515	254/256T	23.04	9.64	F2 SPL.
1545	254/256T	23.34	9.94	F2 SPL.

NOTES:
 1. NAMEPLATE TO BE READ FROM C'BOX SIDE OF MOTOR.
 2. BOX CAN BE MOUNTED IN 90° STEPS.

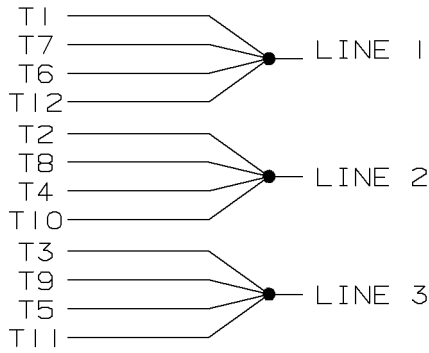
		TOLERANCES UNLESS SPECIFIED		MARATHON ELECTRIC		DRAWN DRS 02-23-2000	
		DEC.	INCHES			CHK	ML 02-23-2000
		.X	±.1			APPD	TB 02-23-2000
		.XX	±.03	TITLE OUTLINE		SCALE 1=5	
2	ADDED THE 14.80 DIMENSION TO FRONT VIEW	RJW	12-08-2005	ML	.XXX ±.005	REF	
1	NEW DRAWING	DRS	02-24-2000		.XXXX ±.0005	FMF	
NO.	REVISION	BY & DATE	CHK	ANG	±7'30"	PREV	
THIS DRAWING IN DESIGN AND DETAIL IS OUR PROPERTY AND MUST NOT BE USED EXCEPT IN CONNECTION WITH OUR WORK ALL RIGHTS OF DESIGN AND INVENTION ARE RESERVED THIS IS AN ELECTRONICALLY GENERATED DOCUMENT - DO NOT SCALE THIS PRINT				RFP	CAD FILE ss88053	SIZE	DRAWING NO. PAGE OF REV.
				DIST	LB	A	SS88053 2

ERROR: syntaxerror
OFFENDING COMMAND: --nostringval--

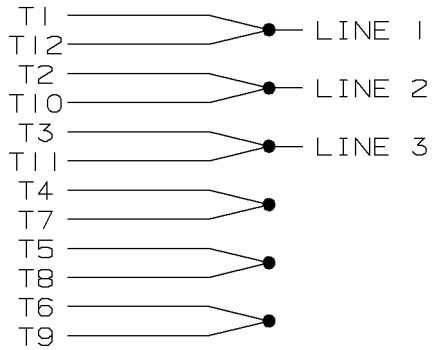
STACK:

244
/oacute
243
/ograve
242
/ntilde
241
/eth
240
/idieresis
239
/icircumflex
238
/iacute
237
/igrave
236
/edieresis
235
/ecircumflex
234
/eacute
233
/egrave
232
/ccedilla
231
/ae
230
/aring
229
/adieresis
228
/atilde
227
/acircumflex
226
/aacute
225
/agrave
224
/germandbls
223
/Thorn
222
/Yacute
221
/Udieresis
220
/Ucircumflex
219
/Uacute
218
/Ugrave
217
/Oslash
216
/multiply
215
/Odieresis
214
/Otilde
213
/Ocircumflex
212
/Oacute
211
/Ograve

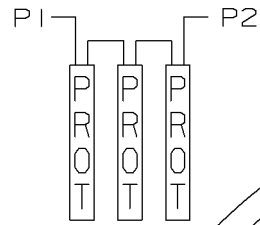
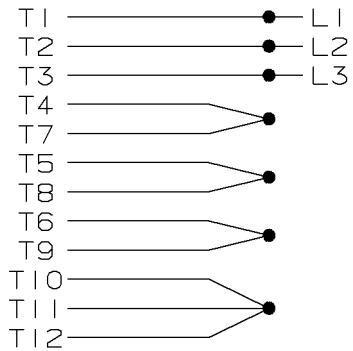
LOW VOLTAGE



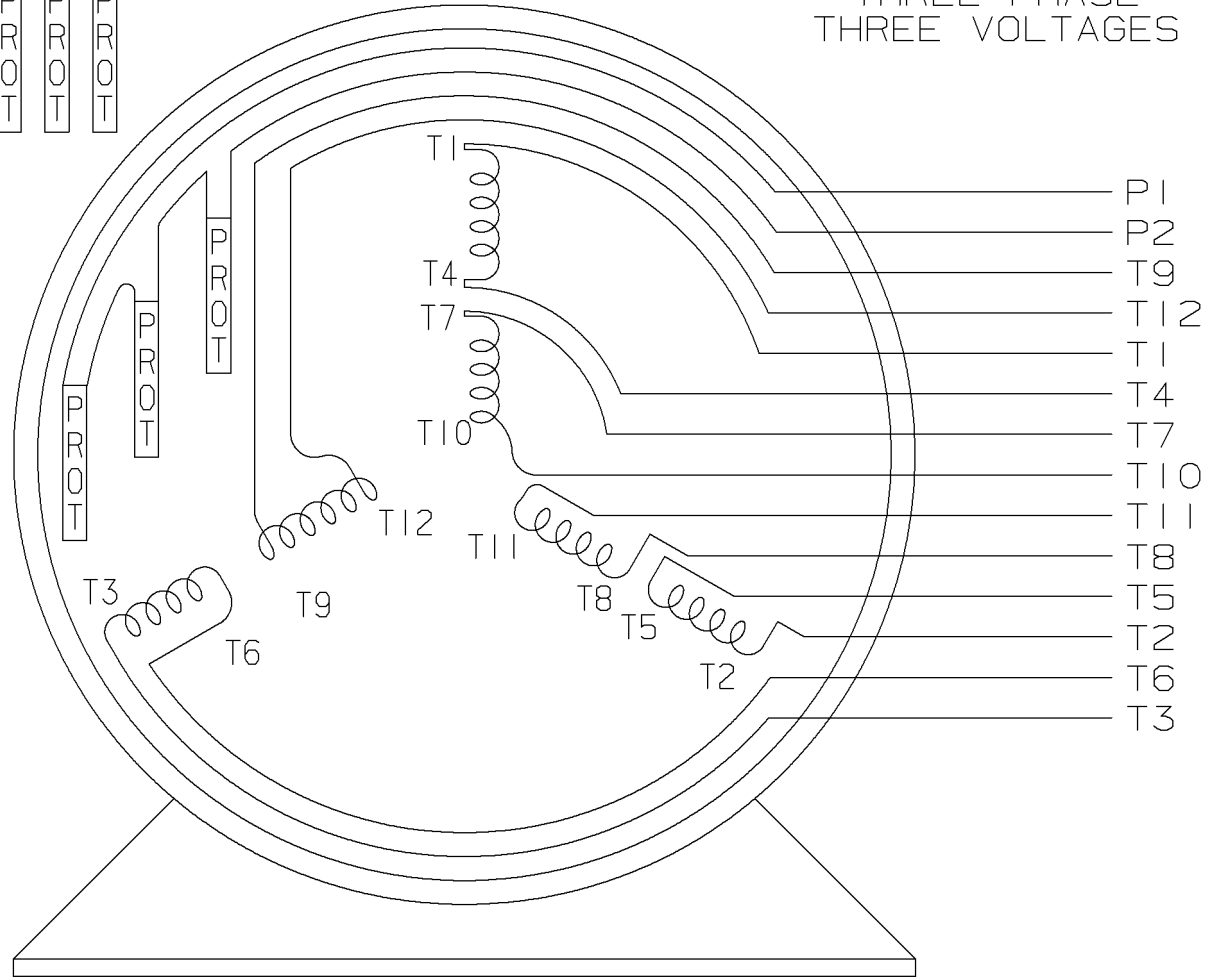
MED. VOLTAGE



HIGH VOLTAGE



THREE PHASE
THREE VOLTAGES



L.V. 2 DELTA M.V. 1 DELTA H.V. 1Y

T6F

				<input checked="" type="checkbox"/> MAX. SURFACE ROUGHNESS UNLESS NOTED OTHERWISE		UNLESS OTHERWISE SPECIFIED DIMENSIONS ARE IN INCHES TOL. ON XX± XXX±.005 XXXX±.0005 ANGLES±				
				MATL SPEC				DRAWN BY BLR		03-09-1998
				FINISH				CHKD BY ML		03-26-1998
5		03-26-1998		REDRAWN ON CADD, NO CHANGE		BLR		APPD BY GK		03-26-1998
REV	DATE	CHANGE			NAME	PART NAME CONNECTION DIAGRAM				DRWG NO
					3Ø - 12 LEAD					A- EE7326C
SHOP BOOK		PURCHASED		DISTRIBUTION - WA - LB - WP - LM			CADD FILE NO.		EE7326C	