

# PRODUCT INFORMATION PACKET

**marathon®**  
Motors

Model No: 254TTDX7044

Catalog No: M329

Close-Coupled Pump Motor, 15 & 12 HP, 3 Ph, 60 & 50 Hz, 208-230/460 & 190/380 V, 1800 & 1500 RPM,  
254JM Frame, DP

Regal and Marathon are trademarks of Regal Rexnord Corporation or one of its affiliated companies.

©2023 Regal Rexnord Corporation, All Rights Reserved. MC017097E

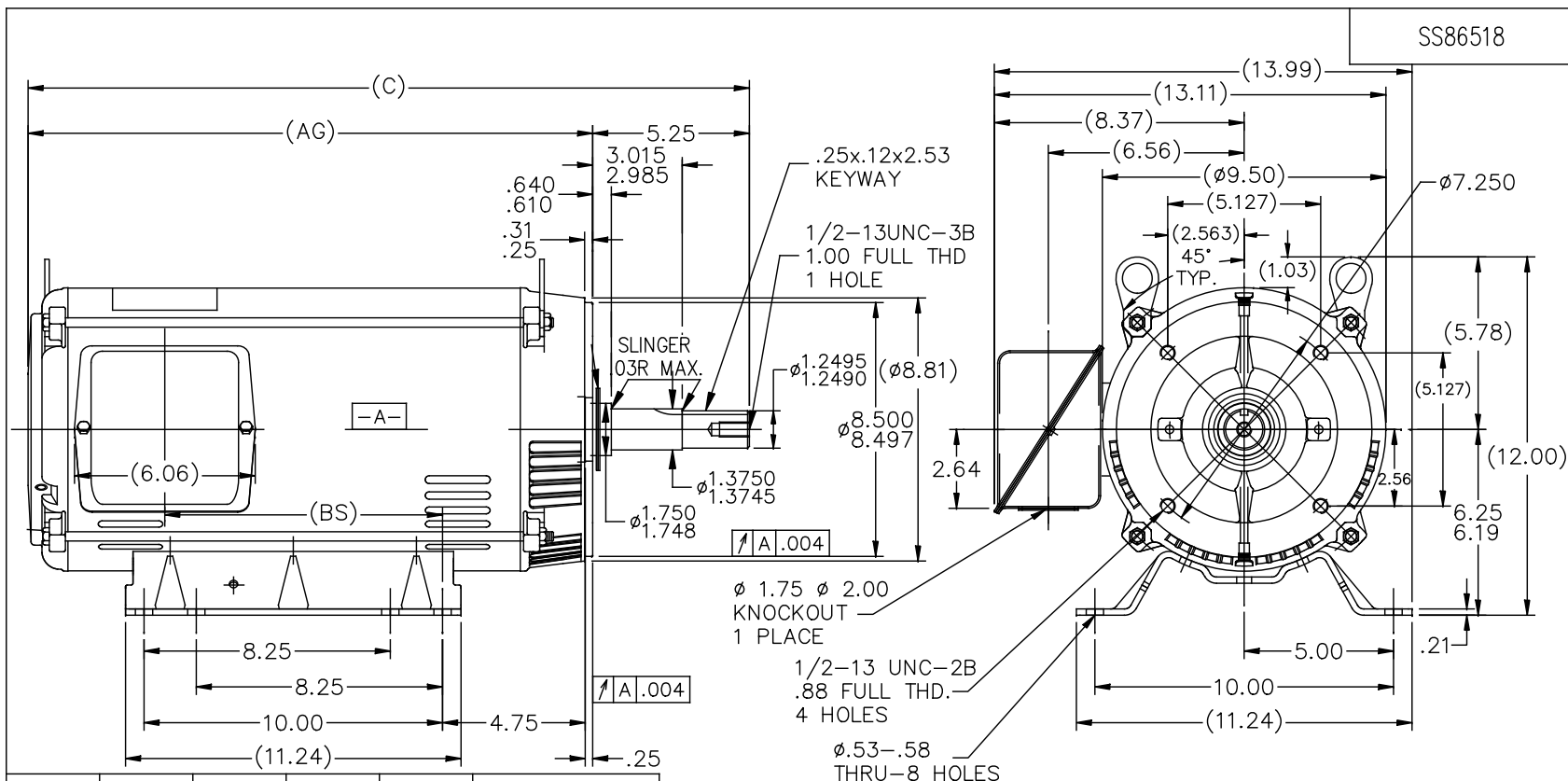
**RegalRexnord**

### Nameplate Specifications

Phase	3	Output HP	15 & 12 Hp
Output KW	11.2 & 9.0 kW	Voltage	208-230/460 & 190/380 V
Speed	1745 & 1455 rpm	Service Factor	1.15 & 1.15
Frame	254JM	Enclosure	Drip Proof
Thermal Protection	No Protection	Efficiency	87.5 & 89.5 %
Ambient Temperature	40 °C	Frequency	60 & 50 Hz
Current	43-39/19.6 & 37.5/18.8 A	Power Factor	81.3
Duty	Continuous	Insulation Class	B
Design Code	B	KVA Code	G
Drive End Bearing Size	6309	Opp Drive End Bearing Size	6208
UL	Recognized	CSA	Y
CE	Y	IP Code	12
Number of Speeds	1		

### Technical Specifications


Electrical Type	Squirrel Cage Induction Run	Starting Method	Across The Line
Poles	4	Rotation	Reversible
Resistance Main	.881 Ohms	Mounting	Rigid Base
Motor Orientation	Horizontal	Drive End Bearing	Ball
Opp Drive End Bearing	Ball	Frame Material	Rolled Steel
Shaft Type	JM	Overall Length	22.42 in
Shaft Diameter	1.375 in	Shaft Extension	5.28 in
Assembly/Box Mounting	F1/F2 Capable		
Connection Drawing	A-EE7308	Outline Drawing	A-SS86518-1340



DASH	FR.	C	BS	AG	MOUNTING
1340	254JM	22.42	7.68	17.17	F1 OR F2
1515	254/256JM	24.17	9.43	18.92	F1 OR F2

NOTES:

1. NAMEPLATE TO BE READ FROM C'BOX SIDE OF MOTOR.
2. BOX CAN BE MOUNTED IN 90° STEPS.
3. BOX CAN BE MOUNTED ON OPPOSITE SIDE BY REMOVING BRACKETS AND TURNING FRAME 180°. (EXCEPT AS NOTED.)

				TOLERANCES UNLESS SPECIFIED		 <b>Regal</b> Beloit America, Inc.	DRAWN DJK 10-19-1993		
				DEC.	INCHES		CHK ML 10-22-1993		
				.X	±.1		APPD DRN 10-22-1993		
7	UPDATED REGAL LOGO	AS	SR	.XX	±.03	TITLE OUTLINE	SCALE 1=5		
6	UPDATED DRAWING	TJW 04/27/2007		.XXX	±.005	250 JM FR. — BB — TS — DR.PR. — 'C' FACE	REF		
5	ADDED 14.08 DIMENSION TO FRONT VIEW	RJW 12-09-2005	ML	.XXXX	±.0005	MAT'L. "JM EXT."	FMF		
NO.	REVISION	BY & DATE	CHK	ANG	±7°30"	FINISH	PREV		
THIS DRAWING IN DESIGN AND DETAIL IS OUR PROPERTY AND MUST NOT BE USED EXCEPT IN CONNECTION WITH OUR WORK ALL RIGHTS OF DESIGN AND INVENTION ARE RESERVED THIS IS AN ELECTRONICALLY GENERATED DOCUMENT — DO NOT SCALE THIS PRINT			RFP		CAD FILE ss86518	SIZE A	DRAWING NO. SS86518	PAGE OF	REV. 7
			DIST LB						



				TOLERANCES UNLESS SPECIFIED		 <b>Regal</b> Beloit America, Inc.	DRAWN RM	11/20/1990
5	CHG TO REGAL LOGO	SL 09/10/2015	AB	DEC.	INCHES		CHK ML	11/21/1990
4	REVISED IEC NOTATIONS	MSG 11/15/2011	CMN	.X	±.1		APPD SAS	04/24/2003
3	ADDED IEC NOTATIONS... (U1), (V1) ETC. MU95194	MSG 5/10/2010	MJS	.XX	±.02		SCALE	1=1
2	ADDED THE OPTIONAL CORD CONNECTION MU46318	RDH 04/24/2003	DRS	.XXX	±.005	TITLE CONNECTION DIAGRAM 3ø – DUAL VOLTAGE MOTOR		REF
1	REDRAWN	RM 11/20/1990		.XXXX	±.0005	MAT'L.		FMF
NO.	REVISION	BY & DATE	CHK	ANG	±7"30"	FINISH		PREV
THIS DRAWING IN DESIGN AND DETAIL IS OUR PROPERTY AND MUST NOT BE USED EXCEPT IN CONNECTION WITH OUR WORK ALL RIGHTS OF DESIGN AND INVENTION ARE RESERVED THIS IS AN ELECTRONICALLY GENERATED DOCUMENT – DO NOT SCALE THIS PRINT			RFP		CAD FILE ee7308		SIZE	DRAWING NO. PAGE OF REV.
			DIST WP				A	EE7308 5