

PRODUCT INFORMATION PACKET



Model No: 254TTDX4039

Catalog No: E188

Close-Coupled Pump Motor, 15 & 10 HP, 3 Ph, 60 & 50 Hz, 230/460 & 190/380 V, 1800 & 1500 RPM,
254JMV Frame, DP

Regal and Marathon are trademarks of Regal Rexnord Corporation or one of its affiliated companies.

©2023 Regal Rexnord Corporation, All Rights Reserved. MC017097E

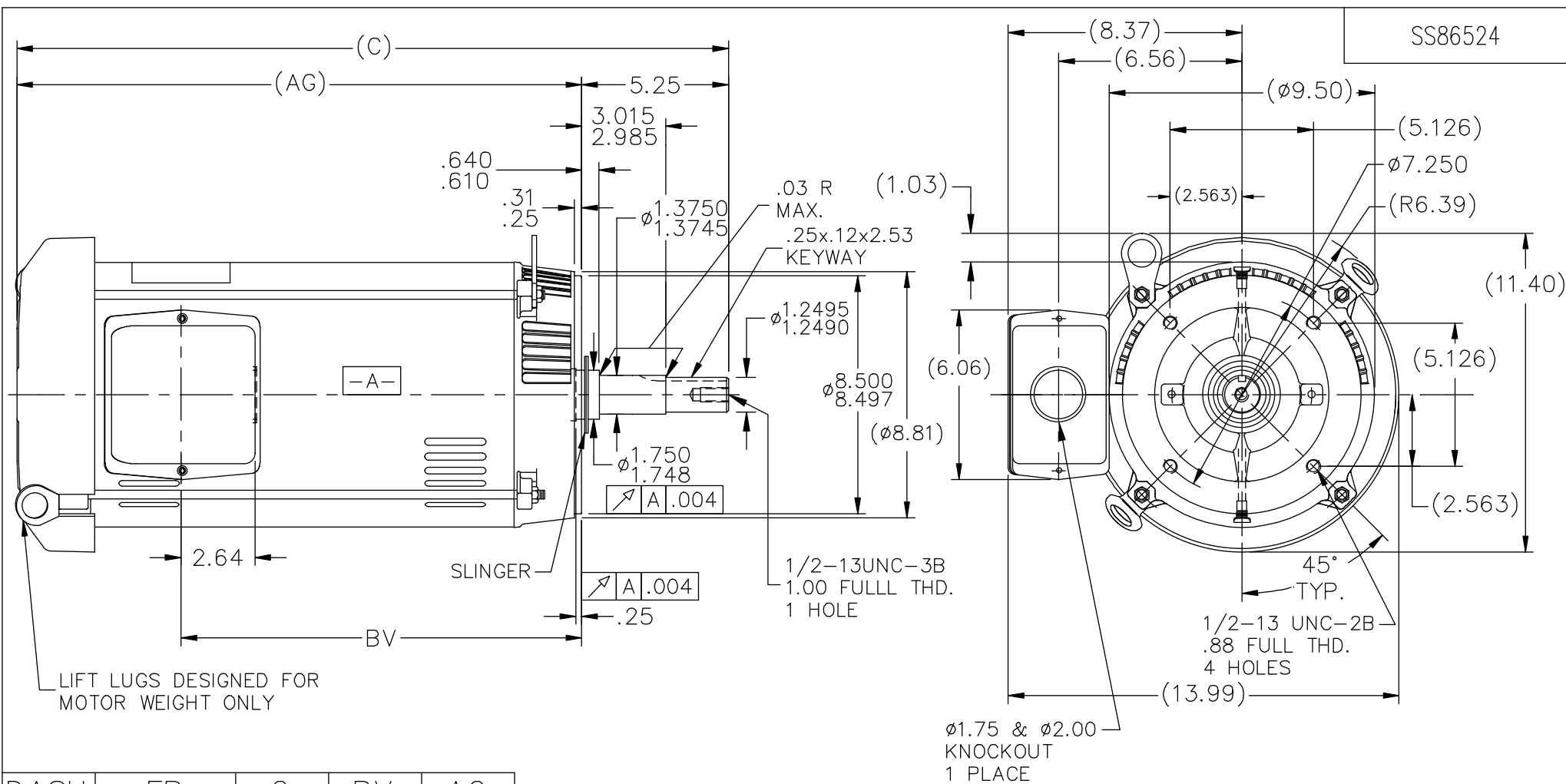


Nameplate Specifications

Phase	3	Output HP	15 & 10 Hp
Output KW	11.2 & 7.5 kW	Voltage	230/460 & 190/380 V
Speed	1760 & 1475 rpm	Service Factor	1.15 & 1.15
Frame	254JMV	Enclosure	Drip Proof
Thermal Protection	No Protection	Efficiency	91 & 92 %
Ambient Temperature	40 °C	Frequency	60 & 50 Hz
Current	38.5/19.2 & 32/16 A	Power Factor	80.2
Duty	Continuous	Insulation Class	B
Design Code	B	KVA Code	G
Drive End Bearing Size	6309	Opp Drive End Bearing Size	6208
UL	Recognized	CSA	Y
CE	Y	IP Code	12
Number of Speeds	1		

Technical Specifications

Electrical Type	Squirrel Cage Induction Run	Starting Method	Across The Line
Poles	4	Rotation	Reversible
Resistance Main	.62 Ohms	Mounting	Round
Motor Orientation	Shaft Down	Drive End Bearing	Ball
Opp Drive End Bearing	Ball	Frame Material	Rolled Steel
Shaft Type	JM	Overall Length	25.45 in
Frame Length	15.15 in	Shaft Diameter	1.250 in
Shaft Extension	5.28 in	Assembly/Box Mounting	F1/F2 Capable
Connection Drawing	A-EE7308	Outline Drawing	A-SS86524-1515



DASH	FR.	C	BV	AG
1340	254JM	23.70	12.68	18.45
1515	254/256JM	25.45	14.43	20.20
1545	254/256JM	25.75	14.73	20.50

- NOTES:
- NAMEPLATE TO BE READ FROM SHAFT EXT. END OF MOTOR.
 - BOX CAN BE MOUNTED IN 90° STEPS.

11	ADDED ITEM #1545(256TTDX4041)	PVR 07/11/2013	JD	TOLERANCES UNLESS SPECIFIED		DRAWN DJK 10-29-1993
10	REVISED INTERNAL THREAD LENGTH ON SHAFT FROM 1.25 TO 1.00 ECN 16312	MSG 5/24/2010	ML	DEC. INCHES		CHK ML 11-01-1993
9	UPDATED DRAWING	TJW 04/27/2007		.XX ±.03		APPD DRN 11-01-1993
8	REDRAWN IN AUTOCAD	TAT 07-06-2004		.XXX ±.005		SCALE 3=16
7	REVISED DIM. 2.70 TO 2.64 CN 29200-185	CAV 02-24-2000		.XXXX ±.0005	MAT'L.	REF
NO.	REVISION	BY & DATE	CHK	ANG ±7'30"	FINISH	PREV
THIS DRAWING IN DESIGN AND DETAIL IS OUR PROPERTY AND MUST NOT BE USED EXCEPT IN CONNECTION WITH OUR WORK ALL RIGHTS OF DESIGN AND INVENTION ARE RESERVED THIS IS AN ELECTRONICALLY GENERATED DOCUMENT - DO NOT SCALE THIS PRINT				RFP	CAD FILE ss86524	SIZE A
				DIST LB		DRAWING NO. SS86524
						PAGE OF 11
						REV. 11



				TOLERANCES UNLESS SPECIFIED		 Regal Beloit America, Inc.	DRAWN RM	11/20/1990
5	CHG TO REGAL LOGO	SL 09/10/2015	AB	DEC.	INCHES		CHK ML	11/21/1990
4	REVISED IEC NOTATIONS	MSG 11/15/2011	CMN	.X	±.1		APPD SAS	04/24/2003
3	ADDED IEC NOTATIONS... (U1), (V1) ETC. MU95194	MSG 5/10/2010	MJS	.XX	±.02		SCALE	1=1
2	ADDED THE OPTIONAL CORD CONNECTION MU46318	RDH 04/24/2003	DRS	.XXX	±.005	TITLE CONNECTION DIAGRAM 3ø – DUAL VOLTAGE MOTOR		REF
1	REDRAWN	RM 11/20/1990		.XXXX	±.0005	MAT'L.		FMF
NO.	REVISION	BY & DATE	CHK	ANG	±7"30"	FINISH		PREV
THIS DRAWING IN DESIGN AND DETAIL IS OUR PROPERTY AND MUST NOT BE USED EXCEPT IN CONNECTION WITH OUR WORK ALL RIGHTS OF DESIGN AND INVENTION ARE RESERVED THIS IS AN ELECTRONICALLY GENERATED DOCUMENT – DO NOT SCALE THIS PRINT			RFP		CAD FILE ee7308		SIZE	DRAWING NO. PAGE OF REV.
			DIST WP				A	EE7308 5