

PRODUCT INFORMATION PACKET

marathon®
Motors

Model No: 254TTDX16055

Catalog No: U209A

Close-Coupled Pump Motor, 15 HP, 3 Ph, 60 Hz, 200 V, 1800 RPM, 254JPV Frame, DP



Regal and Marathon are trademarks of Regal Rexnord Corporation or one of its affiliated companies.

©2022 Regal Rexnord Corporation, All Rights Reserved. MC017097E

RegalRexnord

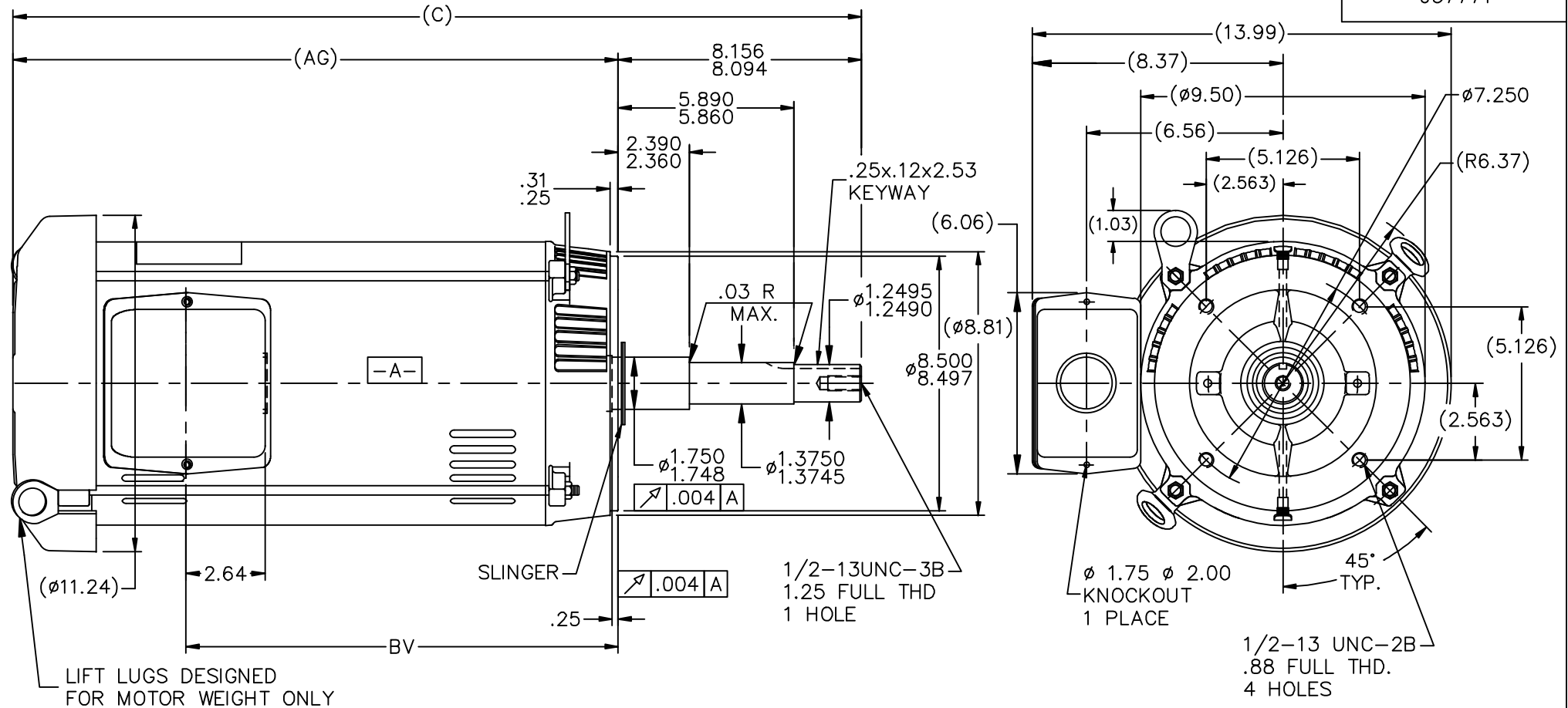
Nameplate Specifications

Output HP	15 Hp	Output KW	11.2 kW
Frequency	60 Hz	Voltage	200 V
Current	44.0 A	Speed	1770 rpm
Service Factor	1.15	Phase	3
Efficiency	93 %	Power Factor	78.5
Duty	Continuous	Insulation Class	F
Design Code	A	KVA Code	J
Frame	254JPV	Enclosure	Drip Proof
Thermal Protection	No Protection	Ambient Temperature	40 °C
Drive End Bearing Size	6309	Opp Drive End Bearing Size	6208
UL	Recognized	CSA	Y
CE	Y	IP Code	12
Number of Speeds	1		

Technical Specifications

Electrical Type	Squirrel Cage Induction Run	Starting Method	Across The Line
Poles	4	Rotation	Reversible
Resistance Main	.48 Ohms	Mounting	Round
Motor Orientation	Shaft Down	Drive End Bearing	Ball
Opp Drive End Bearing	Ball	Frame Material	Rolled Steel
Shaft Type	JP	Overall Length	28.63 in
Frame Length	15.45 in	Shaft Diameter	1.250 in
Shaft Extension	8.16 in	Assembly/Box Mounting	F1/F2 CAPABLE
Connection Drawing	A-EE7300	Outline Drawing	037771-1545


037771



DASH	FR.	C	BV	AG
1340	254JP	26.58	12.68	18.45
1515	254/256JP	28.33	14.43	20.20
1545	254/256JP	28.63	14.73	20.50

NOTES:

- NAMEPLATE TO BE READ FROM SHAFT EXT. END OF MOTOR.
- BOX CAN BE MOUNTED IN 90° STEPS.

				TOLERANCES UNLESS SPECIFIED			DRAWN PVR 06/28/12				
				DEC.	INCHES		CHK JD 06/28/12				
				.X	±.1		APPD				
				.XX	±.03		SCALE 1=5				
				.XXX	±.005		REF SS86526				
				.XXXX	±.0005	MAT'L.	FMF 254TTDX16041				
NO.	REVISION		BY & DATE	CHK	ANG	±7'30"	FINISH		PREV		
THIS DRAWING IN DESIGN AND DETAIL IS OUR PROPERTY AND MUST NOT BE USED EXCEPT IN CONNECTION WITH OUR WORK ALL RIGHTS OF DESIGN AND INVENTION ARE RESERVED THIS IS AN ELECTRONICALLY GENERATED DOCUMENT – DO NOT SCALE THIS PRINT				RFP		CAD FILE 037771		SIZE A	DRAWING NO. 037771	PAGE OF	REV.
				DIST							

THREE PHASE - SINGLE VOLTAGE
MOTOR - CONDUIT BOX @ 'A'

TO REVERSE ROTATION:
INTERCHANGE ANY TWO LINE
LEAD CONNECTIONS

TERMINAL BLOCK WHEN SPECIFIED

IF MOTOR HAS 9 LEADS

T1(U1) T1(U1) T1(U1) → L1

T2(V1) T2(V1) T2(V1) → L2

T3(W1) T3(W1) T3(W1) → L3

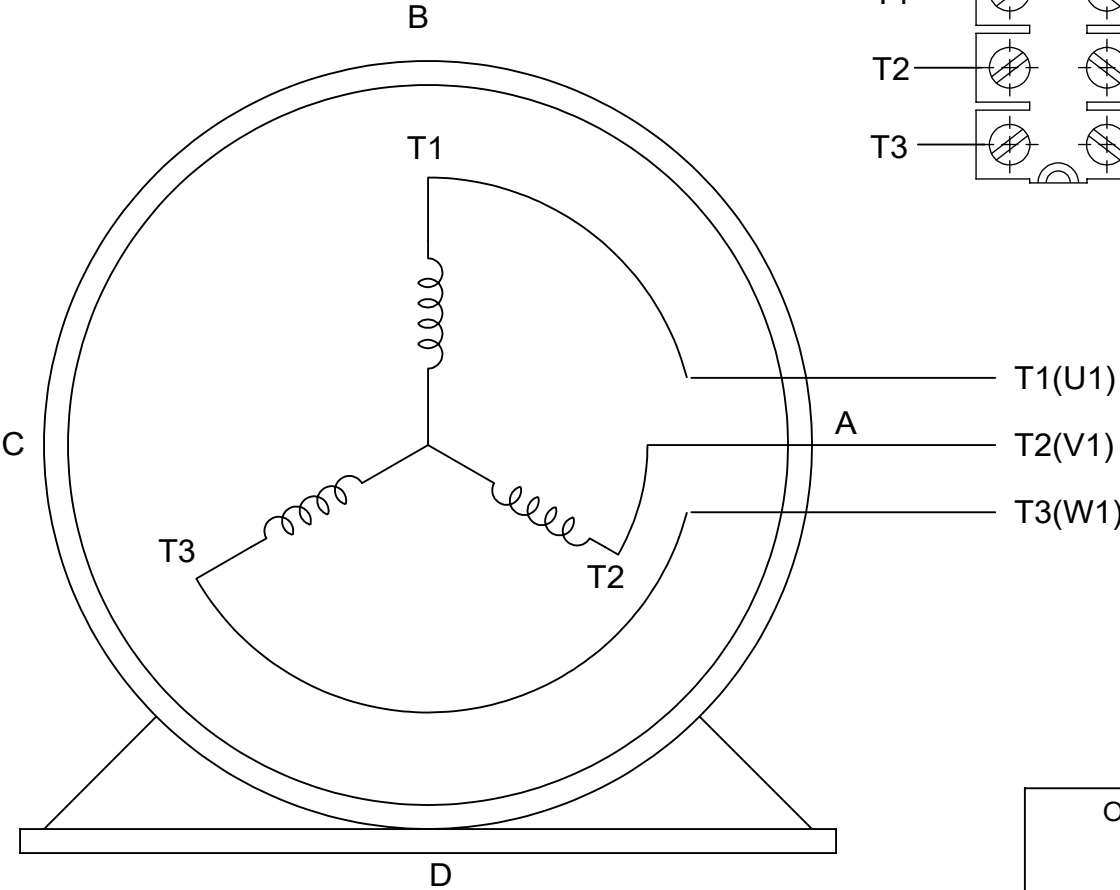
IF MOTOR HAS 6 LEADS

T1(U1) T1(U1) → L1

T2(V1) T2(V1) → L2


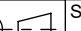
T3(W1) T3(W1) → L3

A-9806 DECAL



VIEW OF TERMINAL END

OPTIONAL CORD CONNECTION	
L1	WHITE
L2	RED
L3	BLACK

DRAWING REVISION AC	REVISION BY BS	REV DATE/© DATE 26/07/2022	PRIMARY DIMENSIONS ARE INCH mm DIMENSIONS IN [BRACKETS] ARE FOR REFERENCE ONLY	DRAWN BY DA	 Regal Beloit America, Inc.				
REQUEST NUMBER CR-0010402	APPROVED BY SN	DATE 26/07/2022		DATE 03-26-1993					
REQUEST NUMBER DESCRIPTION DRAWING UPDATED				APPROVED BY TB	DESCRIPTION CONNECTION DIAGRAM EXTERNAL - SINGLE VOLTAGE - 3Ø MOTOR				
COPYRIGHT (PER REVISION DATE) REGAL BELOIT AMERICA, INC. ALL RIGHTS RESERVED. PROPRIETARY AND CONFIDENTIAL INFORMATION - THIS DOCUMENT IS THE PROPERTY OF REGAL BELOIT AMERICA, INC. ("OWNER") AND CONTAINS OWNER'S PROPRIETARY INFORMATION. ANY PERSON, CORPORATION OR OTHER FIRM RECEIVING IT IS DEEMED, BY RECEIVING IT, TO AGREE THAT IT, AND/OR ANY PART OF IT, SHALL NOT BE DISCLOSED TO ANY PERSON, CORPORATION OR OTHER ENTITY, DUPLICATED, AND/OR USED, EXCEPT AS EXPRESSLY APPROVED IN WRITING IN ADVANCE BY OWNER. THIS DOCUMENT SHALL BE RETURNED TO OWNER UPON REQUEST. IT MAY BE SUBJECT TO CERTAIN RESTRICTIONS UNDER APPLICABLE EXPORT CONTROL LAWS AND REGULATIONS.				DATE 03-26-1993					
				REFERENCE	MATERIAL		PROCESS/FINISH		
				THIRD ANGLE PROJECTION		SIZE A	DRAWING NUMBER EE7300		SHEET 1 OF 1

CERTIFICATION DATA SHEET

**P.O. BOX 8003
WAUSAU, WI 54401-8003
PH. 715-675-3311**

CONN. DIAGRAM: A-EE7300

MODEL #: 254TTDX16055 AA

OUTLINE: 037771-1545

MOUNTING: F1/F2 CAPABLE

WINDING #: K2154378 R1 2

TYPICAL MOTOR PERFORMANCE DATA

HP	kW	SYNC. RPM	F.L. RPM	FRAME	ENCLOSURE	KVA CODE	DESIGN
15	11.2	1800	1770	254JPV	DP	J	A

PH	Hz	VOLTS	AMPS	START TYPE	DUTY	INSL	S.F.	AMB°C
3	60	200	44	ACROSS THE LINE	CONTINUOUS	F4	1.15	40

FULL LOAD EFF:	93	3/4 LOAD EFF:	93	1/2 LOAD EFF:	92.4	GTD. EFF		ELEC. TYPE
FULL LOAD PF:	78.5	3/4 LOAD PF:	72.5	1/2 LOAD PF:	60.5	91.7		SQ CAGE IND RUN

F.L. TORQUE		LOCKED ROTOR AMPS		L.R. TORQUE		B.D. TORQUE		F.L. RISE°C
44.5 LB-FT		333.5		135 LB-FT 303 %		142 LB-FT 319 %		40

SOUND PRESSURE @ 3 FT.		SOUND POWER		ROTOR WK^2		MAX. WK^2		SAFE STALL TIME		STARTS / HOUR		APPROX. MOTOR WGT
70 dBA		80 dBA		1.7 LB-FT^2		90 LB-FT^2		20 SEC.		2		185 LBS.

***** SUPPLEMENTAL INFORMATION *****

DE BRACKET TYPE	ODE BRACKET TYPE	MOUNT TYPE	ORIENTATION	SEVERE DUTY	HAZARDOUS LOCATION	DRIP COVER	SCREENS	PAINT
C-FACE	STANDARD	ROUND	SHAFT DOWN	FALSE	NONE	TRUE	NONE	BLUE (ENAMEL)

BEARINGS		GREASE	SHAFT TYPE	SPECIAL DE	SPECIAL ODE	SHAFT MATERIAL	FRAME MATERIAL
DE	ODE						
BALL	BALL	POLYREX EM	JP	NONE	NONE	1045 HOT ROLLED (C-204)	ROLLED STEEL
6309	6208						

THERMO-PROTECTORS				THERMISTORS	CONTROL	SPACE HEATERS
THERMOSTATS	PROTECTORS	WDG RTDs	BRG RTDs			
NONE	NOT	NONE	NONE	NONE	FALSE	NONE VOLTS

*

N

O

T

E

S

INVERTER TORQUE:	NONE
INV. HP SPEED RANGE:	NONE
ENCODER:	NONE
NONE	NONE
NONE	NONE PPR
BRAKE:	NONE NONE
NONE	P/N NONE
NONE	NONE
NONE FT-LB	NONE V NONE Hz

MARATHON ELECTRIC CORPORATION

TYPICAL PERFORMANCE CURVE for AC MOTOR

Customer

Curve at

200

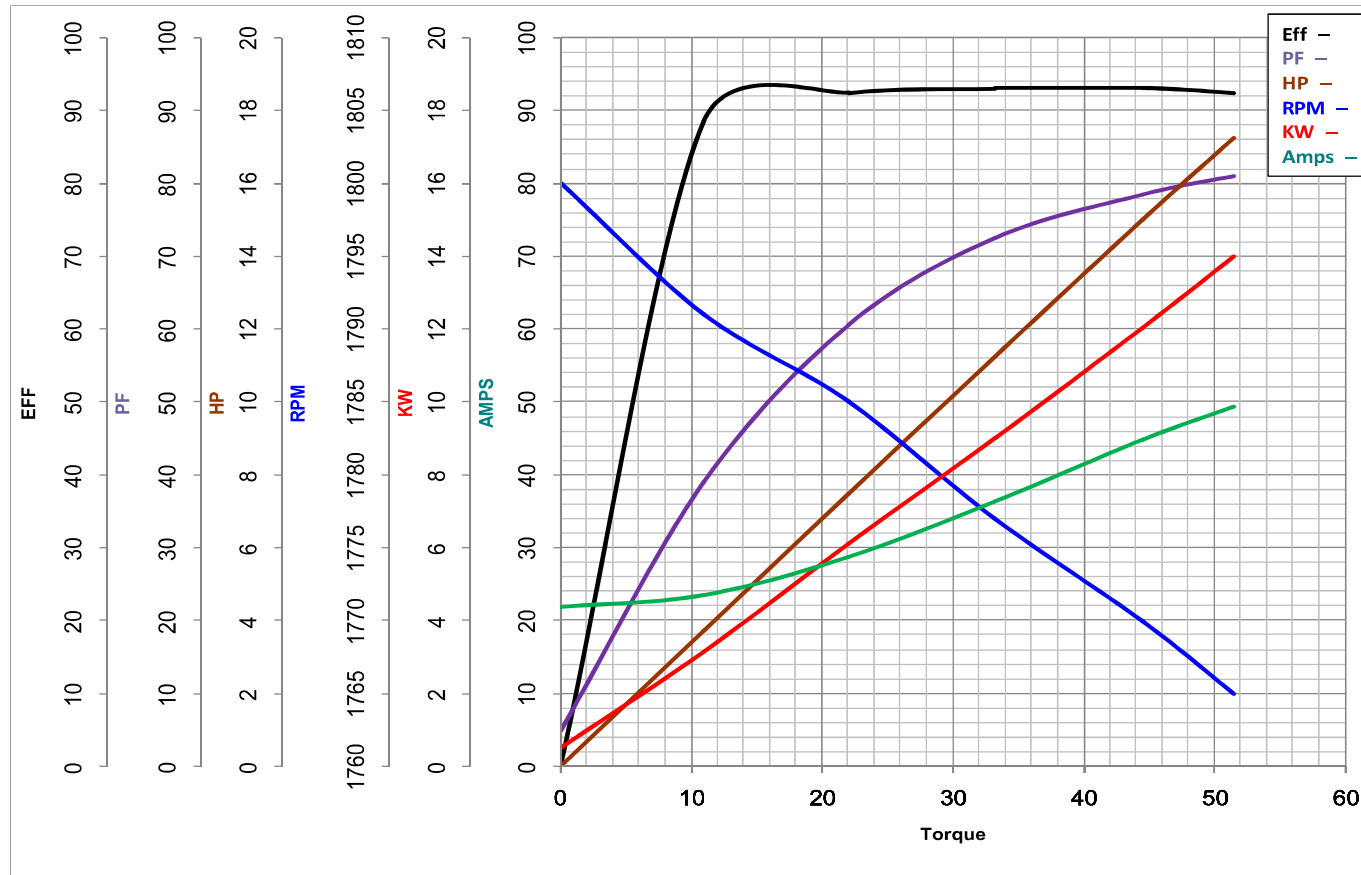
Volts

HP 15.00PHASE 3Model No 254TTDX1605560

HZ

VOLTS 20015

HP

Catalog No U209AHZ 60RPM 1770

Torque in Lb.Ft

FL TORQUE 44.5 Lb.FtBD TORQUE 142.0 Lb.FtLR TORQUE 135 Lb.FtFL AMPS 44PU TORQUE 125.0 Lb.FtLR AMPS 333.5

WINDING

K2154378-2

Prepared By

ANUSHA.M

Date

11/5/2018

EC Declaration of Conformity

The undersigned representing
the manufacturer:

Regal Beloit America
100 East Randolph St.
Wausau, WI 54401

and the authorized representative
established within the Community:

Marathon Electric UK
6F Thistleton Road Ind. Estate
Market Overton
Oakham, Rutland LE15 7PP UK

are committed to providing customers with products that comply with applicable regulations and international protocols to which they are subject, including the requirements of the European Parliament Directive on the Harmonization of the laws relating to electrical equipment designed for use within certain voltage limits (2014/35/EU).

Regal Beloit America declares that the following product(s), to which this declaration relates, are in conformity with the relevant sections of the EC standards listed below.

This statement supersedes any statements previously issued pertaining to the product(s) listed below and is subject to change without notice.

Model No : 254TTDX16055

(Model No. may contain prefix and/or suffix characters)

Catalog No : U209A

Rework No : N/A

Directives :

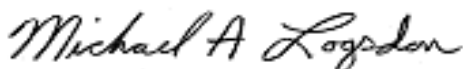
Low Voltage Directive 2014/35/EU

Harmonized Standards Used :

EN 60034-1: 2010 (IEC 60034-1: 2010)

EN 60034-5: 2001/A1:2007 (IEC 60034-5: 2000/A1:2006)

Authorized Representative:



Michael A. Logsdon
Vice President, Technology

Authorized Representative in the Community:



Julian Clark
Marketing Engineer

Created on 09/01/2022

CE 22