

# PRODUCT INFORMATION PACKET



Model No: 254TTDCD6327  
Catalog No: Y316  
15, 1800, ODP, 254TZ, 3/60/230/460, CROP DRYER

Regal and Marathon are trademarks of Regal Rexnord Corporation or one of its affiliated companies.  
©2022 Regal Rexnord Corporation, All Rights Reserved. MC017097E



**Nameplate Specifications**

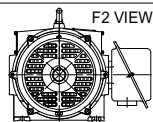
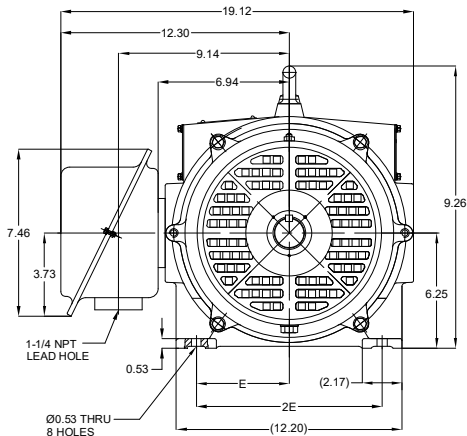
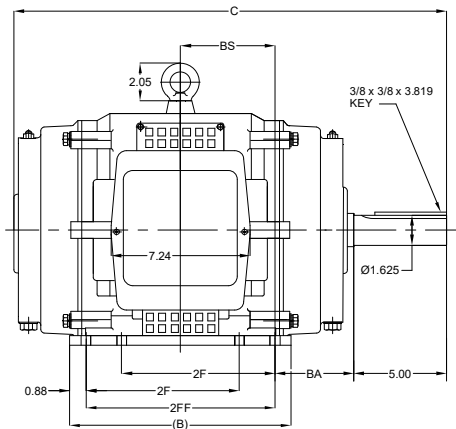
Output HP	15 Hp	Output KW	11.2 kW
Frequency	60 Hz	Voltage	230/460 V
Current	37.5/18.8 A	Speed	1774 rpm
Service Factor	1.15	Phase	3
Efficiency	93 %	Power Factor	81
Duty	Continuous	Insulation Class	F
Design Code	B	KVA Code	G
Frame	254TZ	Enclosure	Drip Proof
Thermal Protection	No Protection	Ambient Temperature	40 °C
Drive End Bearing Size	6309	Opp Drive End Bearing Size	6208
UL	Recognized	CSA	Y
CE	Y	IP Code	22
Number of Speeds	1		

**Technical Specifications**

Electrical Type	Squirrel Cage Induction Run	Starting Method	Wye Start Delta Run
Poles	4	Rotation	Selective Clockwise
Resistance Main	.6729 Ohms	Mounting	Rigid Base
Motor Orientation	Horizontal	Drive End Bearing	Ball
Opp Drive End Bearing	Ball	Frame Material	Cast Iron
Shaft Type	Single Special Extension	Assembly/Box Mounting	F1/F2 CAPABLE
Outline Drawing	SS321209-100	Connection Drawing	EE7358C

This is an uncontrolled document once printed or downloaded and is subject to change without notice. Date Created:11/28/2022

DASH NO.	B	C	E	2E	2F	2FF	BA	BS	MOUNTING	FRAME
100	12.00	23.64	5.00	10.00	--	8.25	4.25	5.22	F1 OR F2	254TZ
200	13.59	25.22			8.25	10.00		4.43		256TZ



DRAWING REVISION C	REVISION BY VS	REV DATE/ E DATE 08-03-2021
ECO CR-0001300	APPROVED BY GNK	DATE 08-03-2021
ECO DESCRIPTION DRAWING UPDATED		
<small>COPYRIGHT (PER REVISION DATE) REGAL BELOIT AMERICA, INC. ALL RIGHTS RESERVED. IMPROVED TYPING AND COMMENTARY INFORMATION. THIS DOCUMENT IS THE PROPERTY OF REGAL BELOIT AMERICA, INC. (OWNER) AND CONTAINS OWNER'S PROPRIETARY INFORMATION. ANY PERSONAL CONSIDERATION OR OTHER FORM RECEIVING IT IS GRANTED BY RECIPIENT TO AGREE THAT IT AND/OR ANY PART OF IT SHALL NOT BE DISCLOSED TO ANY PERSON, CORPORATION OR OTHER ENTITY, DUPLICATED AND/OR USED, EXCEPT AS EXPRESSLY APPROVED IN WRITING IN ADVANCE BY OWNER. THIS DOCUMENT SHALL BE RETURNED TO OWNER UPON REQUEST. IT MAY BE SUBJECT TO CERTAIN RESTRICTIONS UNDER APPLICABLE EXPORT CONTROL LAWS AND REGULATIONS.</small>		

PRIMARY DIMENSIONS ARE INCH  
MIL DIMENSIONS IN [BRACKETS]  
ARE FOR REFERENCE ONLY

DRAWN BY WY	DATE 26/06/2019
APPROVED BY	DATE
REFERENCE	THRD ANGLE PROJECTION

**Regal Beloit America, Inc.**

DESCRIPTION  
**OUTLINE**  
254/256TZ FR-NEMA ODP CAST IRON

MATERIAL PROCESS/FINISH

SIZE  
B DRAWING NUMBER  
**SS321209**

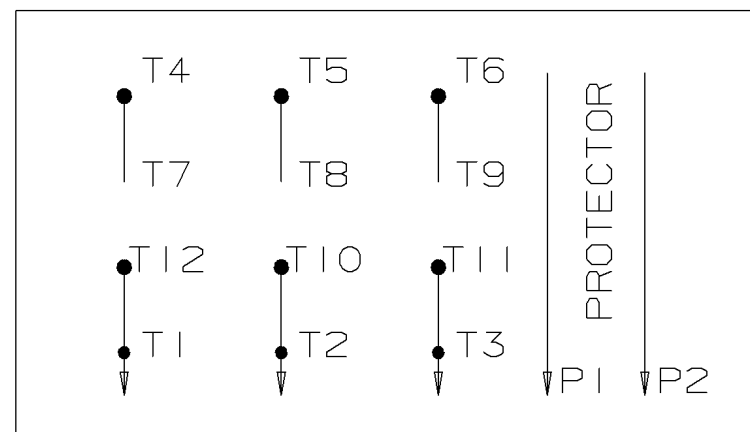
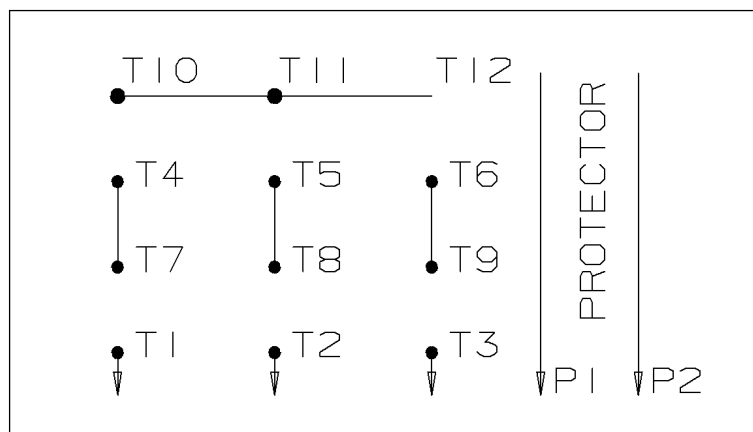
SHEET  
1 OF 1

WYE START

HIGH VOLTAGE

DELTA RUN

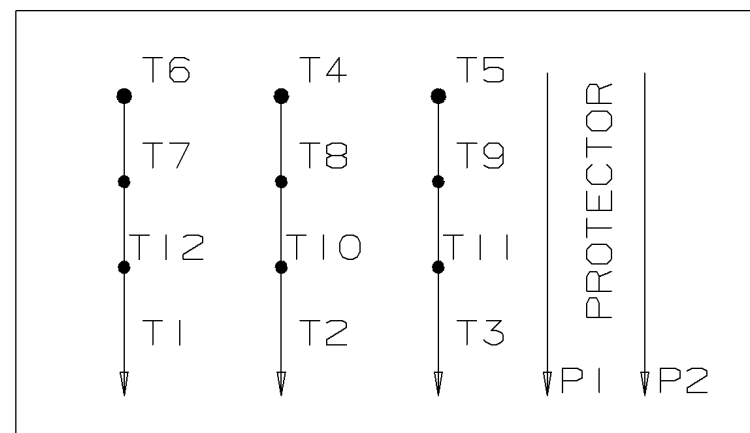
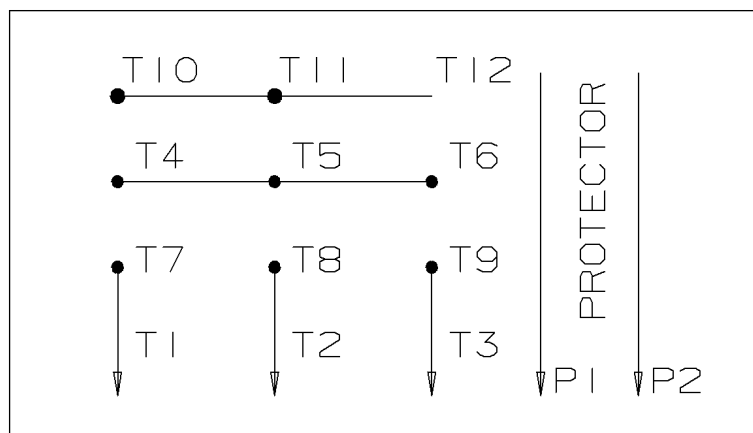
A-EE7358C



WYE START

LOW VOLTAGE

DELTA RUN

4/2 CKTY  $\Delta$ 

				TOLERANCES UNLESS SPECIFIED			DRAWN CAV 01-16-2002	
				DEC.	TOLERANCE		CHK	ML 01-17-2002
				.X	± .1		APPD	DD 01-17-2002
				.XX	± .02		SCALE	
				.XXX	± .005	TITLE CONNECTION DIAGRAM		REF
1	NEW DRAWING MU40207	CAV	01-17-2002	DD	.XXXX	± .0005	<input checked="" type="checkbox"/> SURFACE ROUGHNESS UNLESS SPECIFIED	
NO.	REVISION	BY	DATE	CHK	ANG	± 7'30"	<input type="checkbox"/> MAT'L. FINISH	
				PURCHASED		CAD FILE EE7358C	SHOP BOOK	SIZE A
THIS DRAWING IN DESIGN AND DETAIL IS OUR PROPERTY AND MUST NOT BE USED EXCEPT IN CONNECTION WITH OUR WORK. ALL RIGHTS OF DESIGN AND INVENTION ARE RESERVED. THIS IS AN ELECTRONICALLY GENERATED DOCUMENT - DO NOT SCALE THIS PRINT				DIST WA - LB - WP - LM - BR - BY		DRAWING NO. EE7358C		REV. 1



P.O. BOX 8003  
WAUSAU, WI 54401-8003  
PH. 715-675-3311

DATA VOLTS: 460

### CERTIFICATION DATA SHEET

CUSTOMER:  
ORDER #:  
CONN. DIAGRAM: EE7358C  
OUTLINE: SS321209-100  
WINDING: HA31604021 NONE 2  
SPEED:

CUSTOMER P.O. #:  
REFERENCE MODEL #: 254TTDCD6327  
CAT #: Y316  
CUSTOMER PART #:  
MOUNTING: F1/F2 CAPABLE  
FAN: 504205B

### TYPICAL MOTOR PERFORMANCE DATA

HP	KW	SYNC RPM	FL RPM	FRAME	ENCLOSURE	TYPE	KVA CODE	DESIGN
15	11.2	1800	1774	254TZ	DP	TDB	G	B

PH	HZ	VOLTS	AMPS	START TYPE	DUTY	INSL	S.F.	AMB	ELEV.
3	60/50	230/460#190/380	37.5/18.8&32/16	WYE START DELTA RUN	CONT	F	1.15	40	3300

F.L. EFF	93.0	3/4 LD EFF	93.0	1/2 LD EFF	92.4	GTD EFF	92.4	ELECT. TYPE	SQ CAGE IND RUN
F.L. PF	81.0	3/4 LD PF	75.5	1/2 LD PF	64.0				

F.L. TORQUE	LR AMPS @ 460 V	L.R. TORQUE	B.D. TORQUE	F.L. RISE (° C)
44.4 LB-FT	115	91.0 LB-FT 205%	119 LB-FT 268%	40

SOUND PRESSURE	SOUND	ROTOR WK²	MAX. LOAD WK²	SAFE STALL TIME	STARTS/HOUR	APROX.
74 dBA	83 dBA	2.30 LB-FT²	90 LB-FT²	20 SEC.	2	332 LB.

### \*\*\* SUPPLEMENTAL INFORMATION \*\*\*

DE BRACKET TYPE	ODE BRACKET TYPE	MOUNT TYPE	MOTOR ORIENTATION	SEVERE DUTY	HAZARDOUS LOCATION	DRIP COVER	SCREENS	PAINT
STANDARD	STANDARD	RIGID	HORIZONTAL	NO	NONE	YES	RODENT	BLUE (ENAMEL)

BEARINGS	GREASE	SHAFT TYPE	SPECIAL DE	SPECIAL ODE	SHAFT MATERIAL	FRAME MATERIAL
DE ODE						
BALL BALL	POLYREX EM	SGL SPL EXT	1.625 x 5.00 IN SEK	NONE	1045 HOT ROLLED (C-204)	CAST IRON
6309 6208						

THERMOSTATS	PROTECTORS	WDG RTD's	BRG RTD's	THERMISTORS	CONTROL	SPACE HEATERS
NONE	NOT	NONE	NONE	NONE	FALSE	NA

R1 (ohms/ph)	R2 (ohms/ph)	X1 (ohms/ph)	X2 (ohms/ph)	Xm (ohms/ph)	VIBRATION (in/sec)	FLOAT
0.412	0.234	1.344	1.453	30.467	0.150	ODE

* N O T E S *		INVERTER TORQUE: NONE INV. HP SPEED RANGE: NONE
		ENCODER: NONE NONE NONE NONE PPR

PREPARED BY:	BRAKE: NONE NONE FT-LB: NA VOLTAGE: NONE UL: V - LI,ME-INS,CONST UL REC
DATE: 11/18/2022	

FORM: 3531 REV\_4 2/27/06