

PRODUCT INFORMATION PACKET

marathon®
Motors

Model No: 254TTDCA6012

Catalog No: GT2424

Globetrotter® Close-Coupled Pump Motor, 20 & 15 HP, 3 Ph, 60 & 50 Hz, 230/460 & 190/380 V,
3600 & 3000 RPM, 254JP Frame, DP



Regal and Marathon are trademarks of Regal Rexnord Corporation or one of its affiliated companies.

©2023 Regal Rexnord Corporation, All Rights Reserved. MC017097E

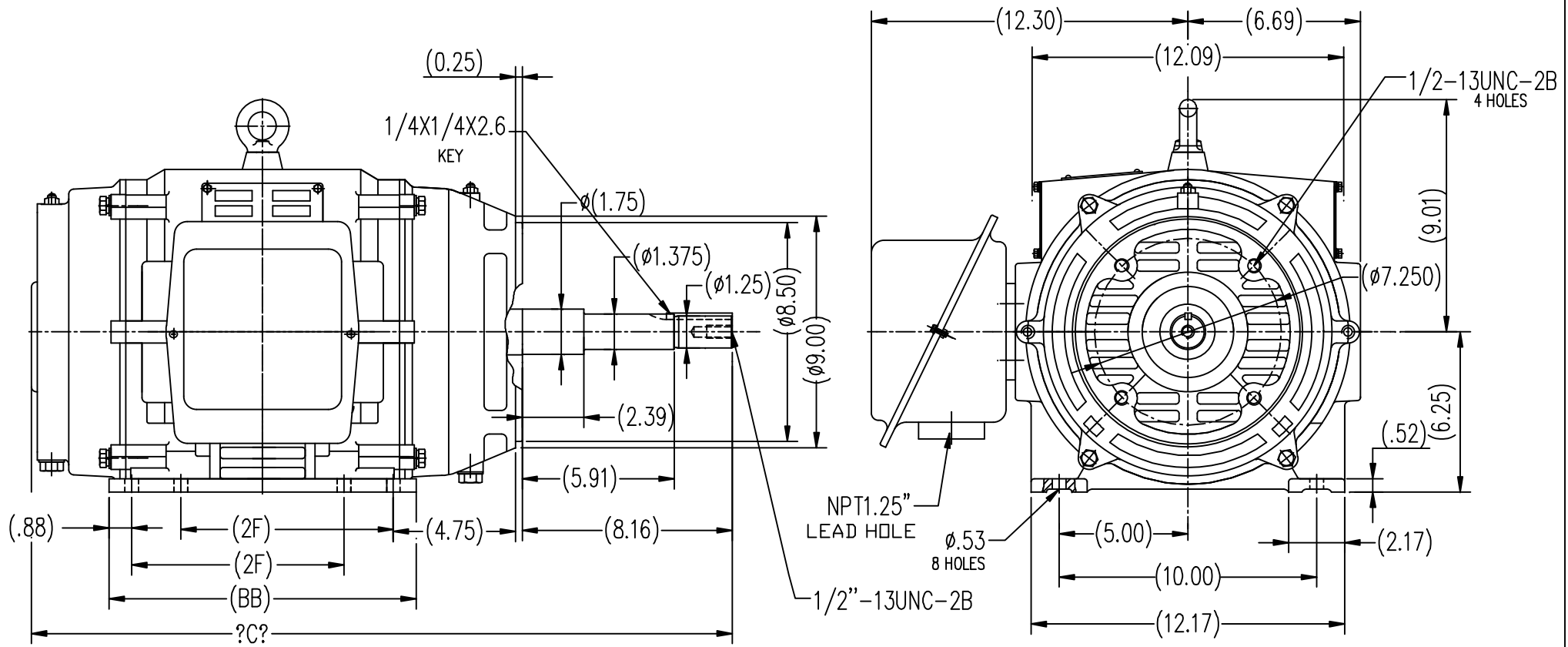
RegalRexnord

Nameplate Specifications

Phase	3	Output HP	20 & 15 Hp
Output KW	14.9 & 11.2 kW	Voltage	230/460 & 190/380 V
Speed	3545 & 2940 rpm	Service Factor	1.15 & 1.15
Frame	254JP	Enclosure	Drip Proof
Thermal Protection	No Protection	Efficiency	91 & 90.2 %
Ambient Temperature	40 °C	Frequency	60 & 50 Hz
Current	46/23 & 42/21 A	Power Factor	88
Duty	Continuous	Insulation Class	F
Design Code	B	KVA Code	G
Drive End Bearing Size	6209	Opp Drive End Bearing Size	6209
UL	Recognized	CSA	Y
CE	Y	IP Code	22
Number of Speeds	1		

Technical Specifications

Electrical Type	Squirrel Cage Inverter Rated	Starting Method	Line Or Inverter
Poles	2	Rotation	Reversible
Resistance Main	.464 Ohms	Mounting	Rigid Base
Motor Orientation	Horizontal	Drive End Bearing	Ball
Opp Drive End Bearing	Ball	Frame Material	Cast Iron
Shaft Type	JP	Overall Length	27.32 in
Frame Length	10.63 in	Shaft Diameter	1.250 in
Shaft Extension	8.16 in	Assembly/Box Mounting	F1/F2 CAPABLE
Connection Drawing	EE7308K	Outline Drawing	SS620572-254T



254T	8.25	12.00	27.32
256T	10.00	13.59	28.9
FRAME	2F	BB	C

		TOLERANCES UNLESS SPECIFIED		REGAL-BELOIT CORPORATION		DRAWN L.S.J 05-16-2012	
		DEC.	INCHES			CHK	
		.X	±.1			APPD	
		.XX	±.03	TITLE		SCALE	1=6
		.XXX	±.005	OUTLINE		REF	
		.XXXX	±.0005	ODP-254/256JP FR-CAST IRON		FMF	HWADA
				MAT'L.		PREV	
NO.	REVISION	BY & DATE	CHK	ANG	±1/2	FINISH	
THIS DRAWING IN DESIGN AND DETAIL IS OUR PROPERTY AND MUST NOT BE USED EXCEPT IN CONNECTION WITH OUR WORK ALL RIGHTS OF DESIGN AND INVENTION ARE RESERVED THIS IS AN ELECTRONICALLY GENERATED DOCUMENT - DO NOT SCALE THIS PRINT				RFP	CAD FILE	SS620572	SIZE
				DIST			DRAWING NO.
							B
							SS620572
							REV.

LOW VOLTAGEHIGH VOLTAGE

VIEW OF TERMINAL END

			TOLERANCES UNLESS SPECIFIED			 REGAL - BELOIT CORPORATION	DRAWN PGK 06-04-1997		
NO.	REVISION	BY & DATE	CHK	ANG	± 7'30"		CHK	ML	06-05-1997
E	CORRECTED IEC MARKINGS ECD-0111208	WGJ 01-23-2017	EMH	DEC.	INCHES				
D	RE-DRAWN WITH REGAL LOGO ECD-0110493	WGJ 09-30-2016	EMH	.X	± .1				
8	ADDED IEC DESIGNATIONS MU95020	TJW 4/30/2010	MJS	.XX	± .02	TITLE CONNECTION DIAGRAM DELTA CON. - 3Ø - 9 LEADS			
7	REVISED HIGH VOLTAGE L2 WAS L3 CN52600-354	MRB 09-21-1998		.XXX	± .005				
6	REDRAWN ON CADD	PGK 06-05-1997		.XXXX	± .0005				
						MAT'L.			
						FINISH			
THIS DRAWING IN DESIGN AND DETAIL IS OUR PROPERTY AND MUST NOT BE USED EXCEPT IN CONNECTION WITH OUR WORK ALL RIGHTS OF DESIGN AND INVENTION ARE RESERVED THIS IS AN ELECTRONICALLY GENERATED DOCUMENT - DO NOT SCALE THIS PRINT						RFP	CAD FILE EE7308K		SIZE
						DIST			A
								DRAWING NO.	PAGE OF
								EE7308K	REV.
									E

CERTIFICATION DATA SHEET

Model#: 254TTDCA6012 AA

WINDING#: CHT25420002 NONE 1

CONN. DIAGRAM: EE7308K

ASSEMBLY: F1/F2 CAPABLE

OUTLINE: SS620572

TYPICAL MOTOR PERFORMANCE DATA

HP	KW	SYNC. RPM	F.L. RPM	FRAME	ENCLOSURE	KVA CODE	DESIGN
20&15	14.9&11.2	3600	3545&2940	254JP	DP	G	B

PH	Hz	VOLTS	FL AMPS	START TYPE	DUTY	INSL	S.F	AMB°C	ELEVATION
3	60/50	230/460#190/ 380	46/23&42/21	LINE OR INVERTER	CONTINUOU S	F7	1.15/1.15	40	3300

FULL LOAD EFF: 91&90.2	3/4 LOAD EFF: 90.2	1/2 LOAD EFF: 89.5	GTD. EFF	ELEC. TYPE	NO LOAD AMPS
FULL LOAD PF: 88&88	3/4 LOAD PF: 86	1/2 LOAD PF: 79	90.2	SQ CAGE INV RATED	14 / 7

F.L. TORQUE	LOCKED ROTOR AMPS	L.R. TORQUE	B.D. TORQUE	F.L. RISE°C
29.5 LB-FT	290 / 145	53 LB-FT 179	80 LB-FT 271	35

SOUND PRESSURE @ 3 FT.	SOUND POWER	ROTOR WK^2	MAX. WK^2	SAFE STALL TIME	STARTS /HOUR	APPROX. MOTOR WGT
75 dBA	85 dBA	1.35 LB-FT^2	- LB-FT^2	15 SEC.	3	300 LBS.

*** SUPPLEMENTAL INFORMATION ***

DE BRACKET TYPE	ODE BRACKET TYPE	MOUNT TYPE	ORIENTATION	SEVERE DUTY	HAZARDOUS LOCATION	DRIP COVER	SCREENS	PAINT
C-FACE	STANDARD	RIGID	HORIZONTAL	FALSE	NONE	FALSE	NONE	BLUE (ENAMEL)

BEARINGS		GREASE	SHAFT TYPE	SPECIAL DE	SPECIAL ODE	SHAFT MATERIAL	FRAME MATERIAL
DE	OPE						
BALL	BALL	POLYREX EM	JP	NONE	NONE	1045 HOT ROLLED (C-204)	CAST IRON
6209	6209						

THERMO-PROTECTORS				THERMISTORS	CONTROL	SPACE /n HEATERS
THERMOSTATS	PROTECTORS	WDG RTDs	BRG RTDs			
NONE	NOT	NONE	NONE	NONE	FALSE	NONE VOLTS

If Inverter equals NONE, contact factory for further
information

INVERTER TORQUE: VARIABLE 10:1		
INV. HP SPEED RANGE: NONE		
ENCODER: NONE		
NONE NONE		
NONE NONE PPR		
BRAKE: NONE NONE		
NONE P/N NONE		
NONE NONE		
NONE FT-LB	NONE V	NONE Hz

*
N
O
T
E
S
*

DATE: 06/23/2017 02:38:27 AM

FORM 3531 REV.3 02/07/99

** Subject to change without notice.

Data Sheet

Date: 19-06-2017

Customer:

Attention:

Submitted by: FAREEDA DUDEKULA



254TTDCA6012

Submittal

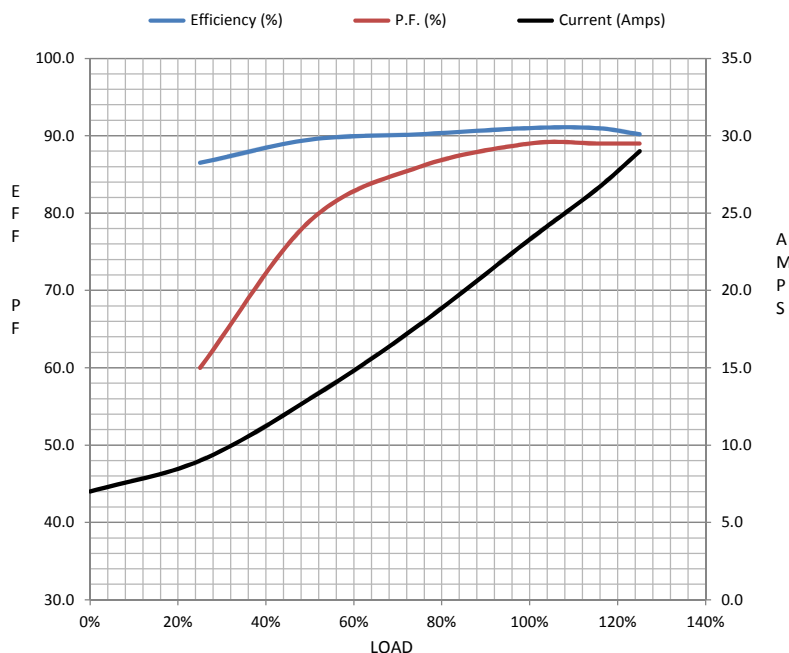
Data @ 460 V

Motor Load Data

Load	0%	25%	50%	75%	100%	115%	125%	LR	
Current (Amps)	7.0	9.0	13.0	17.8	23.3	26.5	29.0	145	
Torque (ft-lb)	0.00	7.4	14.7	22.2	29.5	34.2	37.2	53.0	
RPM	3600	3585	3572	3560	3545	3538	3530	0	
Efficiency (%)		86.5	89.5	90.2	91.0	91.0	90.2		
P.F. (%)	7.5	60.0	79.0	86.0	89.0	89.0	89.0	38.5	

Motor Speed Data

	LR	Pull-Up	BD	Rated	Idle	Information Block	
Speed (RPM)	0	1800	3260	3545	3600	HP	20.0
Current (Amps)	145	130	90.0	23.3	7.0	Sync. RPM	3600
Torque (ft-lb)	53.0	47.5	80.0	29.5	0.00	Frame	254



HP	20.0			
Sync. RPM	3600			
Frame	254			
Enclosure	DP			
Construction	TDC			
Voltage	230/460#190/38(V			
Frequency	60 Hz			
Design	A			
LR Code letter	G			
Service Factor	1.15			
Temp Rise @ FL	35 ° C			
Duty	CONT			
Ambient	40 ° C			
Elevation	1,000 feet			
Rotor/Shaft wk²	1.35 Lb-Ft²			
Ref Wdg	CHT25420002 NONE			
Sound Pressure @ 1M	75 dBA			
VFD Rating	VARIABLE 10:1			
Outline Dwg	SS620572			
Conn. Diag	EE7308K			
Additional Specifications:				
0				
365THFS8036				
EQUIV CKT (OHMS / PHASE)				
R1	R2	X1	X2	Xm
0.2990	0.1800	1.0140	1.0820	38.3850

Speed -Torque Curve

