

# PRODUCT INFORMATION PACKET



Model No: 254THTPA8848  
Catalog No: 254THTPA8848  
15,1800,TENV,254TC,3/60/230/460

Regal and Marathon are trademarks of Regal Rexnord Corporation or one of its affiliated companies.  
©2024 Regal Rexnord Corporation, All Rights Reserved. MC017097E



**Nameplate Specifications**

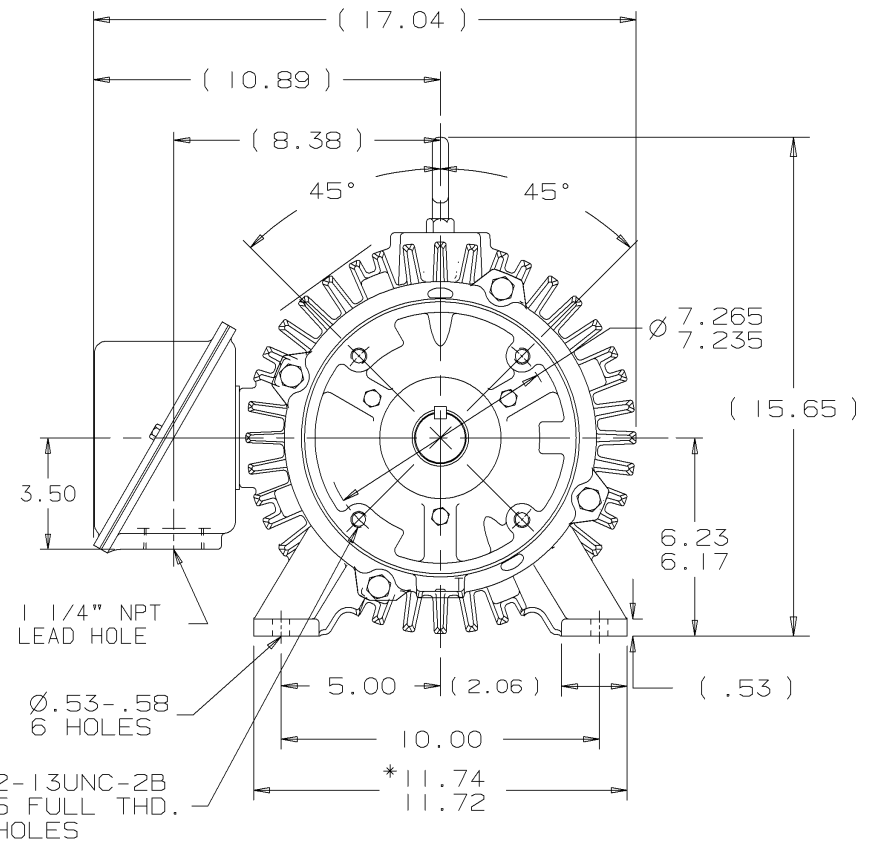
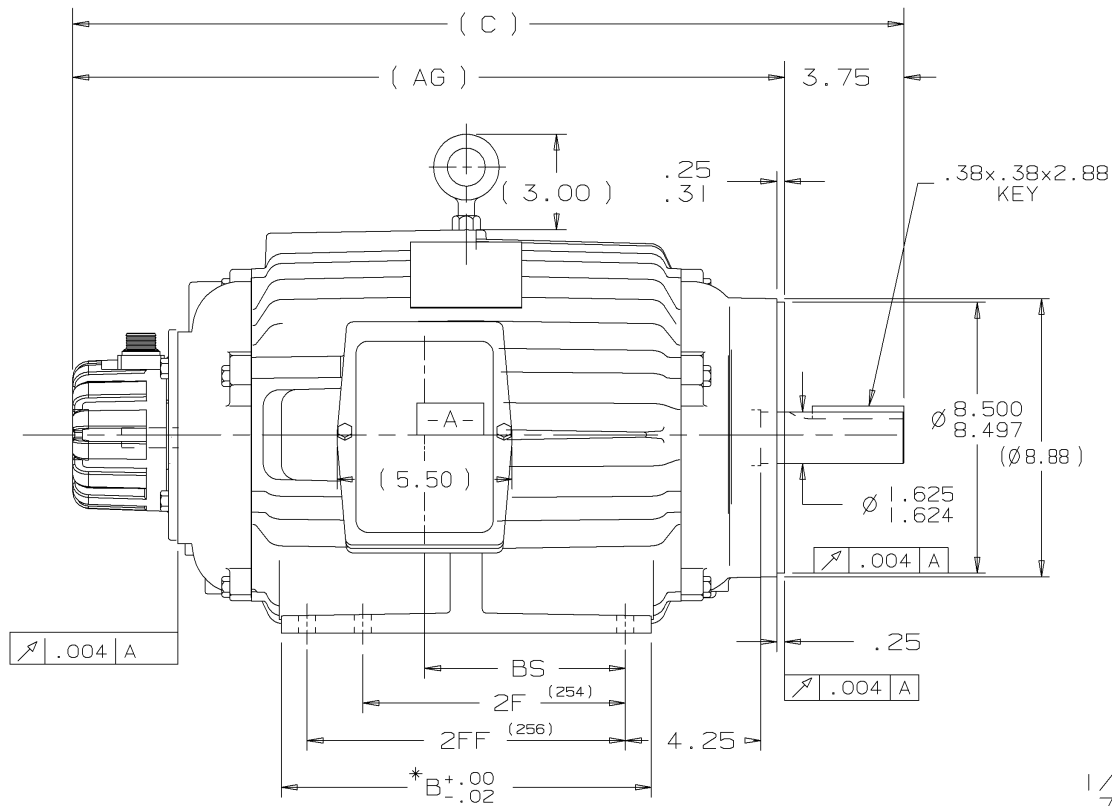
Phase	3	Output HP	15 Hp
Output KW	11.2 kW	Voltage	230/460 V
Speed	1760 rpm	Service Factor	1
Frame	254TC	Enclosure	Totally Enclosed Non Ventilated
Thermal Protection	Thermostat	Efficiency	91 %
Ambient Temperature	40 °C	Frequency	60 Hz
Current	39.0/19.5 A	Power Factor	80
Duty	Continuous	Insulation Class	F
Design Code	A	KVA Code	K
Drive End Bearing Size	309	Opp Drive End Bearing Size	207
CSA	Y	IP Code	54
Number of Speeds	1		

**Technical Specifications**

Electrical Type	Squirrel Cage Inverter Duty	Starting Method	Inverter Only
Poles	4	Rotation	Reversible
Resistance Main	.515 Ohms	Mounting	Rigid Base
Motor Orientation	Horizontal	Drive End Bearing	Ball
Opp Drive End Bearing	Ball	Frame Material	Cast Iron
Shaft Type	T	Assembly/Box Mounting	F1/F2 CAPABLE
Outline Drawing	B-SS203602-1350	Connection Drawing	A-EE7308T

This is an uncontrolled document once printed or downloaded and is subject to change without notice. Date Created:09/07/2024

B-SS203602



## NOTES:

1. C.BOX CAN BE ROTATED IN 90° STEPS
2. C.BOX CAN BE MOUNTED ON OPPOSITE SIDE BY REMOVING BRACKETS AND TURNING FRAME 180°
3. NAMEPLATES TO BE READ FROM CONDUIT BOX SIDE OF MOTOR

DASH	FRAME	B	C	2F	2FF	BS	AG
1350	254/6T	11.62	26.11	8.25	10.00	6.31	22.36

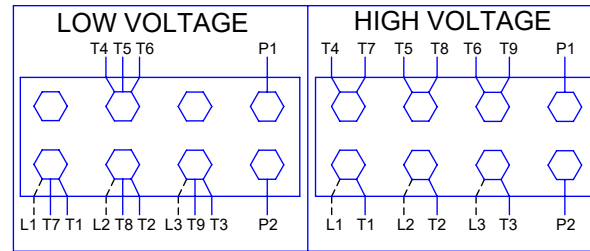
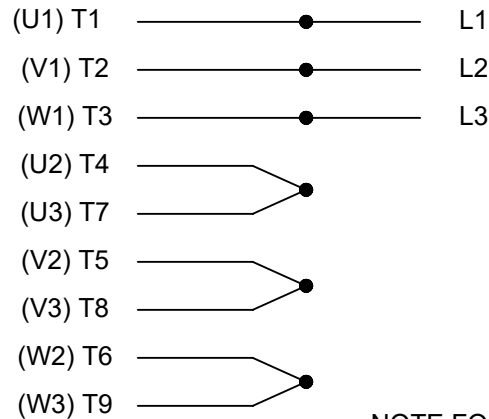
3	11-10-2000	ADDED ENCODER COVER REVISED 'C' & 'AG'	CN 29998	HLB	✓ MAX. SURFACE ROUGHNESS UNLESS NOTED OTHERWISE	UNLESS OTHERWISE SPECIFIED DIMENSIONS ARE IN INCHES TOL. ON XX± XXX±.005 XXXX±.0005 ANGLES± 7'30"	
2	10-13-2000	REVISED TO STRETCH FRAME		CAV	MATL SPEC	DRAWN BY CAV	10-04-2000
1	10-06-2000	NEW DRAWING	MU33802	CAV	FINISH	CHKD BY ML	10-06-2000
REV	DATE	CHANGE	NAME	PART NAME	OUTLINE BEI HS35 ENCODER	APPD BY BW	10-06-2000
				250TCZ FR. - TENV - C'FACE			
		SHOP BOOK	PURCHASED	DISTRIBUTION - WA - LB - WP - LM - BR	CADD FILE NO.	SS203602	

ERROR: syntaxerror  
OFFENDING COMMAND: --nostringval--

STACK:

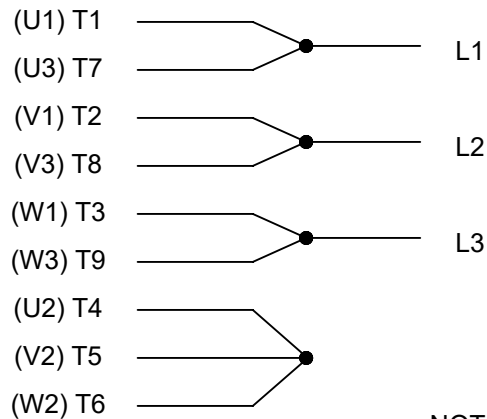
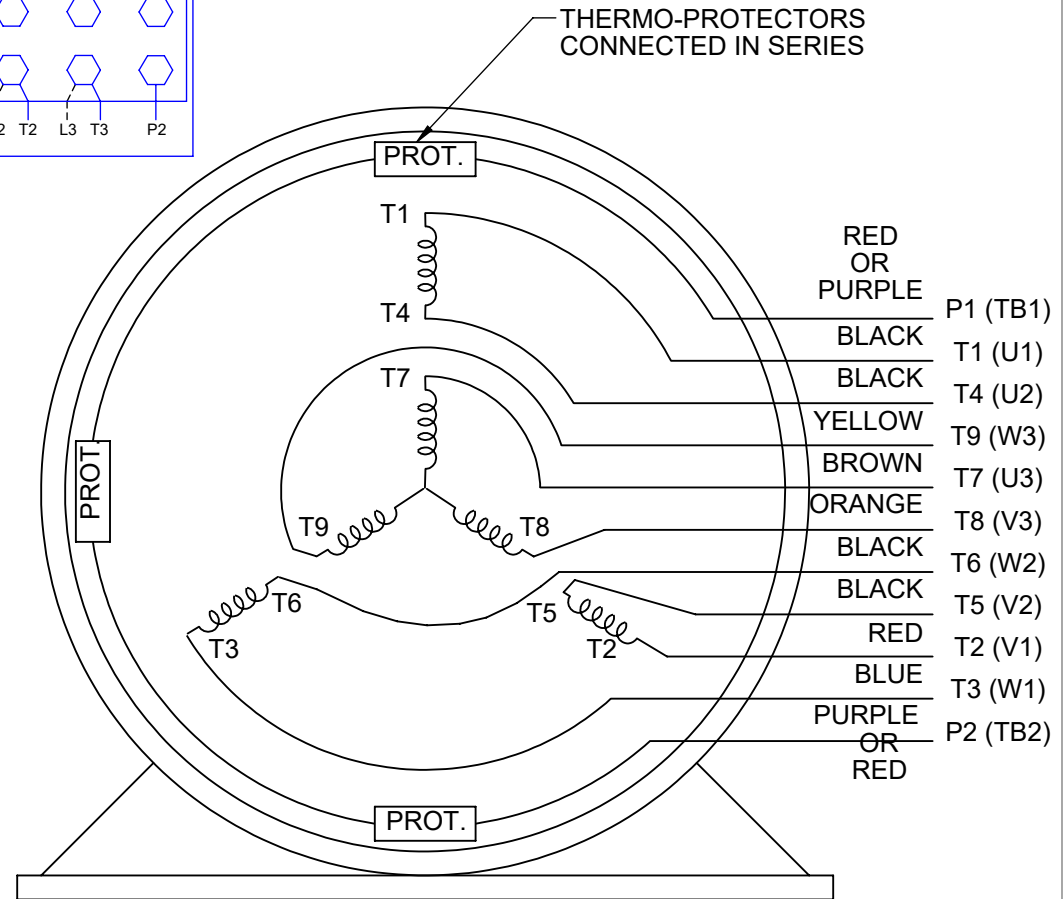
/im  
-savelevel-

## HIGH VOLTAGE



NOTE FOR FACTORY USE ONLY:  
 TO SURGE TEST FOR COMMON CONNECT:  
 HIGH VOLT: CONNECT P1 TO T1  
 THEN P2 TO L1  
 LOW VOLT: CONNECT P1 TO T1 & T7,  
 THEN P2 TO L1

## LOW VOLTAGE

THREE PHASE  
DUAL VOLTAGE MOTOR

## VIEW OF TERMINAL END

NOTE: LEAD'S COLOR CAN BE YELLOW OR WHITE FOR MT2 PLANT

DRAWING REVISION T	REVISION BY ZR	DATE 01-14-2019
ECO ECO-0159915	APPROVED BY DR	DATE 01-15-2019

ECO DESCRIPTION  
ADDED TERMINAL CONNECTION DIAGRAM

COPYRIGHT REGAL BELOIT AMERICA, INC. ALL RIGHTS RESERVED.  
 PROPRIETARY AND CONFIDENTIAL INFORMATION - THIS DOCUMENT IS THE PROPERTY OF  
 REGAL BELOIT AMERICA, INC. ("OWNER") AND CONTAINS OWNER'S PROPRIETARY  
 INFORMATION. ANY PERSON, CORPORATION OR OTHER FIRM RECEIVING IT IS DEEMED,  
 BY RECEIVING IT, TO AGREE THAT IT, AND/OR ANY PART OF IT, SHALL NOT BE DISCLOSED  
 TO ANY PERSON, CORPORATION OR OTHER ENTITY, DUPLICATED, AND/OR USED, EXCEPT  
 AS EXPRESSLY APPROVED IN WRITING IN ADVANCE BY OWNER. THIS DOCUMENT SHALL  
 BE RETURNED TO OWNER UPON REQUEST. IT MAY BE SUBJECT TO CERTAIN  
 RESTRICTIONS UNDER APPLICABLE EXPORT CONTROL LAWS AND REGULATIONS.

DRAWN BY  
SMC

DATE  
05-13-1992

APPROVED BY  
TB

DATE  
05-13-1992

REFERENCE  
EE7308/EE7300

THIRD ANGLE  
PROJECTION



Regal Beloit America, Inc.

## DESCRIPTION

**CONN DIAGRAM-INTERNAL**  
 3 PHASE - DUAL VOLTAGE MOTOR

MATERIAL

PROCESS/FINISH

SIZE  
A

DRAWING NUMBER

EE7308T

SHEET  
1 OF 1